



Klabin

Management of wood stocks with SAP EWM





Klabin



Jean Figueredo da Silva
IT Coordinator – Forestry Business

(+55) 11-98511-8752

jfigueredo@klabin.com.br

www.linkedin.com/in/jeanfigueredocoordenadortj

KLABIN

A Brazilian company with 122 years of history.

25 thousand employees

THE BIGGEST PRODUCER AND
EXPORTER OF PAPERS FOR
PACKAGING IN BRAZIL AND
LEADER IN THE PRODUCTION OF
PAPER PACKAGING



www.Klabin.com.br



Klabin



24 Industrial Units



23 in Brazil

1 in Argentina

3 Forestry units





BUSINESS UNITS

FORESTRY

PULP

PAPER

PACKAGING

Forest base



258,000

hectares of forests planted with
pine and eucalyptus

226,000

hectares of environmental
preservation



Paraná



Santa Catarina



São Paulo



Klabin

Journey at Klabin

2013
Version 9.0



2015
Version 9.2



2018
Version 9.5



IT Landscape



Scope of the solution in the processes



Solution hierarchy

Warehouse

4

Storage in the
Forest

18

Timber-Yard

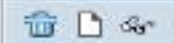
5

Industrial
Courtyard



Change Storage Bin

Stocks in the Forest



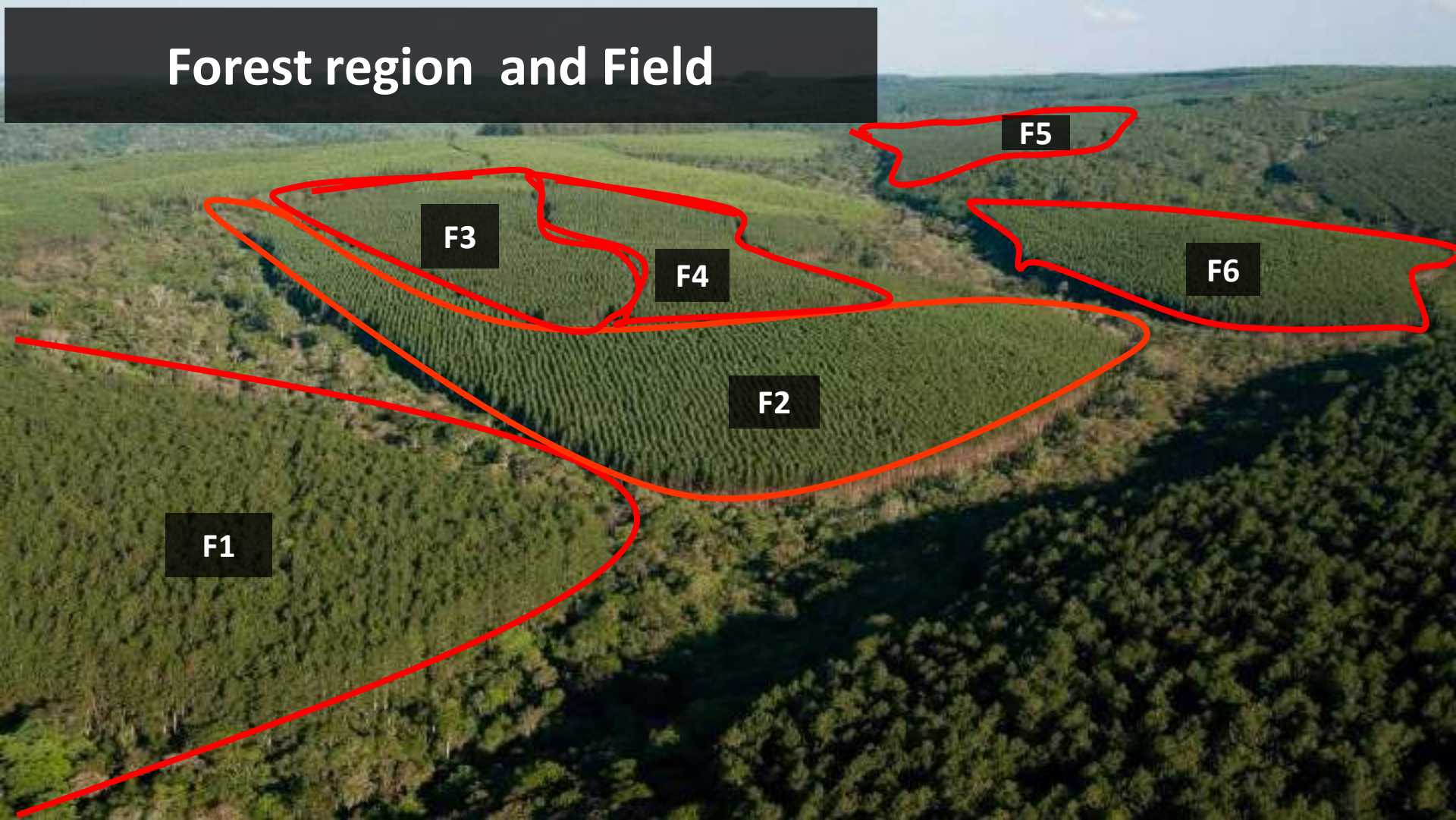
Warehouse No. Central Warehouse
 Storage Bin

- Storage Bin
- Stock
- Physical Inventory
- Bin Sectioning
- Statistic
- Activity Areas
- Warehouse Tasks
- PSA

Storage Type	<input type="text" value="AAB"/>	General Storage Area	Verification	<input type="text"/>
Storage Section	<input type="text" value="G5A"/>		PbV Verification	<input type="text"/>
Bin Access Type	<input type="text" value="A1"/>			
Fire-Cont.Sect.	<input type="checkbox"/>			
Stor. Bin Type	<input type="text" value="L1"/>			
Stor.Group	<input type="text"/>	REC St. Group	<input type="text"/>	
Food Bin Type	<input type="checkbox"/>	No. of HUs	<input type="text" value="0"/>	
Maximum Weight	<input type="text"/>	Weight Used	<input type="text" value="0,000"/>	Weight Usage <input type="text" value="0,000"/>
Max. Volume	<input type="text"/>	Loading Volume	<input type="text" value="0,000"/>	Volume Usage <input type="text" value="0,000"/>
Total Capacity	<input type="text"/>			
Aisle	<input type="text"/>	X Coordinate	<input type="text"/>	
Stack	<input type="text"/>	Y Coordinate	<input type="text"/>	
Level	<input type="text"/>	Z Coordinate	<input type="text"/>	
Bin Sectn	<input type="text"/>	Bin Depth	<input type="text"/>	
Bin Angle	<input type="text"/>			

- Set Putaway Block
- Set Stock Removal Block

Forest region and Field



F1

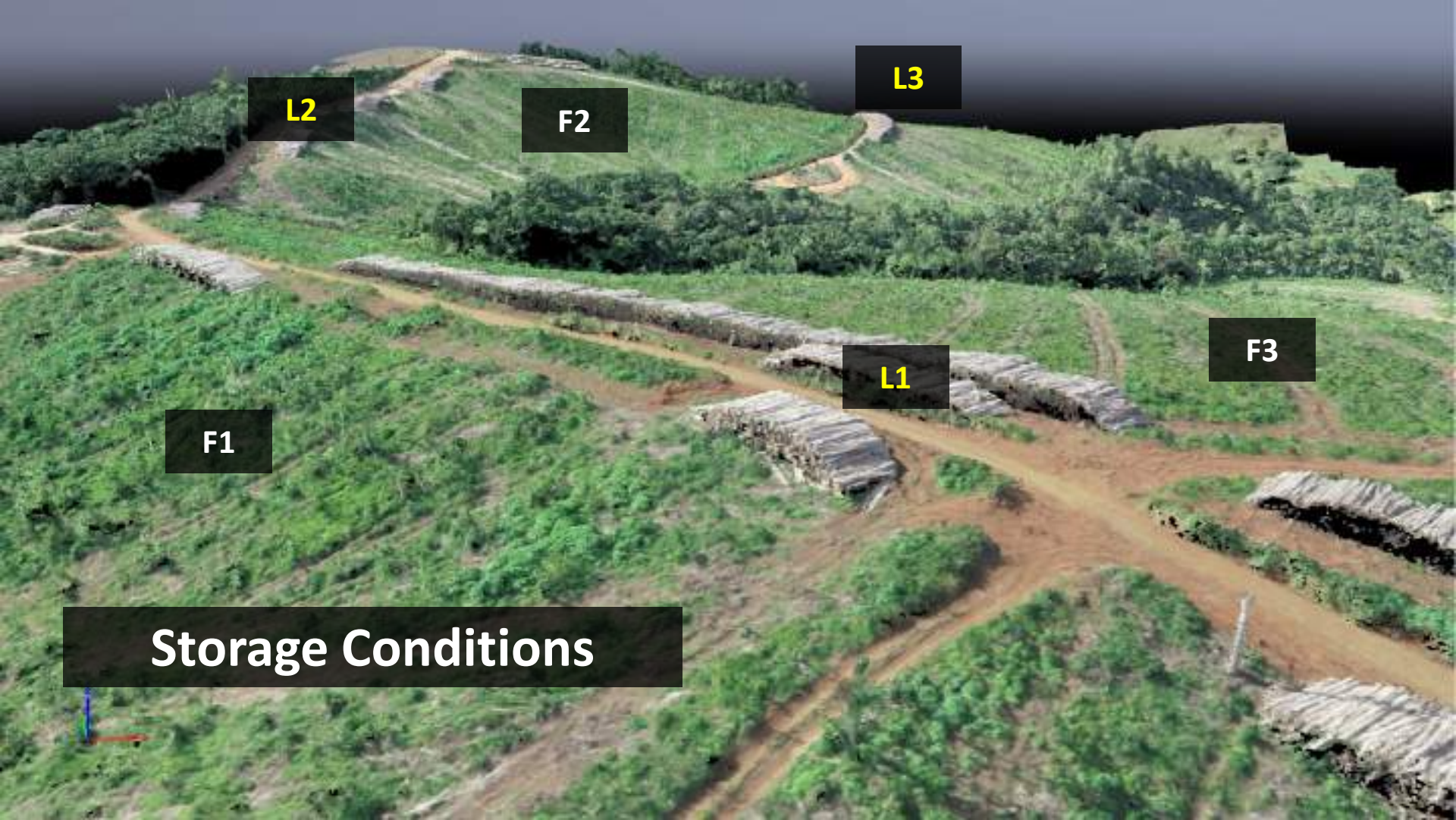
F3

F4

F2

F5

F6



L2

F2

L3

F3

F1

L1

Storage Conditions



Storage conditions



Timber-Yard and Industrial courtyard

Change Storage Bin



Warehouse No. Central Warehouse

Storage Bin



- Storage Bin
- Stock
- Physical Inventory
- Bin Sectioning
- Statistic
- Activity Areas
- Warehouse Tasks
- PSA

Storage Type General Storage Area

Storage Section

Bin Access Type

Fire-Cont. Sect.

Stor. Bin Type

Stor. Group

Fixed Bin Type

Maximum Weight TO *

Max. Volume M3 *

Total Capacity

Aisle

Stack

Level

Bin Sectn

Bin Angle

REC St. Group

No. of HUs

Weight Used

Loading Volume

X Coordinate

Y Coordinate

Z Coordinate

Bin Depth

Verification

PbV Verification

Weight Usage

Volume Usage

Status

Timber-Yard

SSB

SSD

SB1/SB2/SB3

SB1/SB2





Industrial Courtyard



© 2015 The University of Texas at Austin
All rights reserved.

Industrial courtyard

SSB

SB1

SB2

SB3

SB4

SB5



Functionalities

**Storage
management**

**SKU and wood
product
classification**

**wood product
reclassification**

Storage condition

Wood's Feature

Industry supply

**Current account
of wood stocks**

Wood traceability

APP Mobile



TE0072



APP Mobile

Selecione o Prefixo

Maquina: **TE0072**

GFR020

GFR061

TEX046

VPP638

VOLTAR

EXCLUIR

PREFIXO MANUAL

Selecione o Talhão

Tipo de Carregamento: **Colheita**

MA02

DBC

U7A

MA02

DBC

U6A

MA02

DBC

L4A

MA02

DSR

J2A

VOLTAR

TALHÃO MANUAL

Selecione o Material

APP Mobile

Talhao: MA02DSRJ2A

PP720

PC530TA

PC310TA

PC265TA

VOLTAR

MATERIAL MANUAL

Digite o material

Material: E P 360

Especie

360

PINUS

EUCALIPTO

360SC

Finalidade

720

PROCESSO

COMERCIO

+

CANCELAR

CONFIRMAR

APP Mobile

Material: **PC530TA**

L3

L1

VOLTAR

LOGABILIDADE MANUAL

Caminhão:

BBM290

Talhão:

MA02AABA3A

Material:

PC360

Logabilidade-Classe:

L1-C1

Data de Corte

15/07/2019

Destino:

PUMA

VOLTAR

INICIAR
CARREGAMENTO

Analytics – Supply MIX



Informações dos Pátios

Produção por turno por semana de corte e material

Pátios:

MA02

OR20

Data:

02/03/2021

12/03/2021

Linha de

DF01

DF13

DF11

DF14

DF12

Densidade Ponderada - Pinus



2 3 4 5 6 7 8 9 10 11 12 13 14 15 16 17 18 19 20 21 22 23

Alinhamento

hora	Peso	Saída	MINUTO	Placa do Cavallo	Densidade Ajustada	Peso Líquido
03	0,37				0,37	39,80
04	0,37				0,37	41,10
05	0,37				0,37	38,96
06	0,37				0,37	42,98
07	0,37				0,37	43,12
08	0,37				0,37	40,34
09	0,39				0,39	38,22
10	0,30				0,30	47,70

Densidade Ponderada - Eucalipto



0 1 2 3 4 5 6 7 8 9 10 11 12 13 14 15 16 17 18 19 20 21 22 23

Acumulado Pinus

0,419
Densidade Ponderada

Acumulado Euca

0,487
Densidade Ponderada



Power BI



Analytics – Wood Stocks



Evolução Estoque



Gênero

Todos

DBM

Todos

Projeção Estoque Monte Alegre

Eucalipto Pinus



Projeção Estoque Puma

Eucalipto Pinus



Power BI

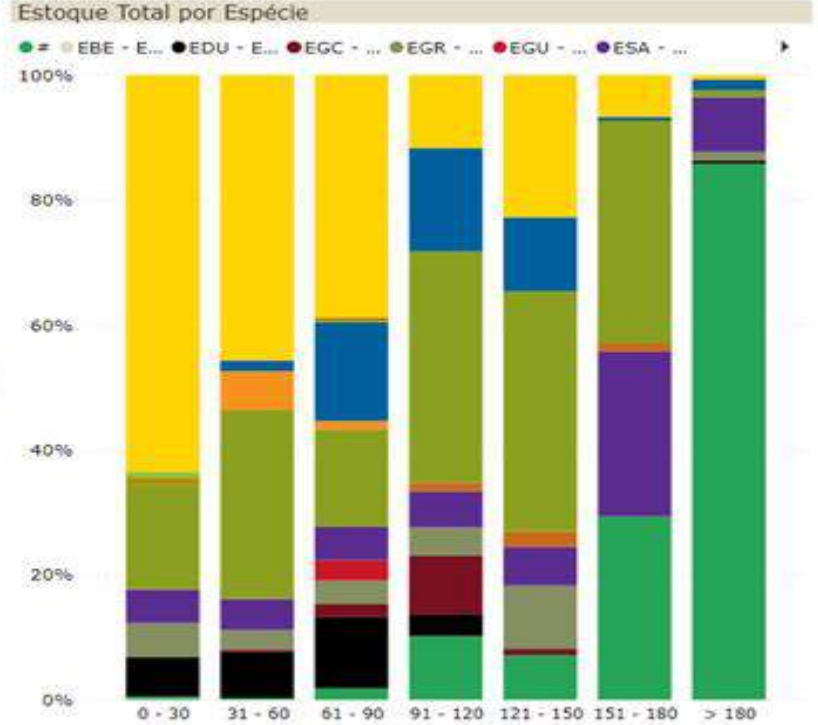
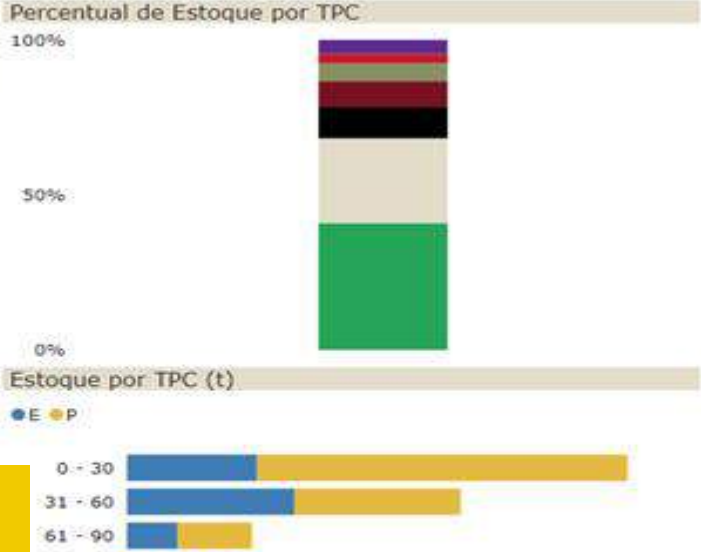


Analytics – Time after wood cutting



Faixa de TPC

Home icon, Back icon, Local: Todos, Material: Todos





K Log
Florestal



Satélite

Digite o Prefixo

Camadas Geográficas

Legenda



Google

Consulta Especifica / Parada Indevida

Tabela de Conteúdos ▾

Ferramentas ▾

1:9.028

KLADIN | carthesiber

Camadas Buscar Por

Estoque Linha do Tempo

Unidade:

Talhão:

Data início:

Data final:

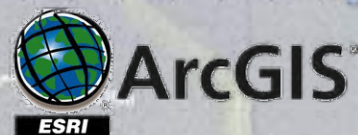


Estoque: MA02BRSA2A ✕

Nº Depósito = CMA
 Região Florestal = BRS
 Talhão = A2A

POSIÇÃO	MATERIAL	LOTE	LOCALIDADE	TIPO ACESSO	ÁREA	UNIDADE
GOL-BRSA2A-01	EP730	MA1008AL06	L3	A3	304.135	TD
GOL-BRSA2A-01	EP730	MA1008AL06	L1	A1	30.548	TD

Dados de 09/06/2019





Klabin



Jean Figueredo da Silva
IT Coordinator – Forestry Business
(+55) 11-98511-8752

jfigueredo@klabin.com.br

www.linkedin.com/in/jeanfigueredocoordenadortj