



T.CON



OPERATIONAL EXCELLENCE

Meeting agile business requirements and optimizing mill processes with data-driven integration



**How do small teams manage
IT applications for 5 factories
across 4 continents?**

THE SPEAKERS



Hans-Peter Aregger

CIO
Chemie Papier Holding AG



Philipp Morgenthaler

COO
Perlen Packaging



Thomas Blöchl

COO
T.CON GmbH & Co. KG



AGENDA



01

02

03

04

05

Our Company

Who we are and how we captured our market

Our Production

A spider web of material and information flows across continents

Lean IT

IT as one of the pillars of sustainable production: a lean approach

Our data-driven future

Current use-cases that highlight the path forward

A strategic cooperation

How we work with our IT partner T.CON

01

**OUR
COMPANY**

CHEMIE & PAPIER HOLDING AG

Who are we?



PVC / PVdC
pharmaceutical packaging films



Newspaper and magazine
paper

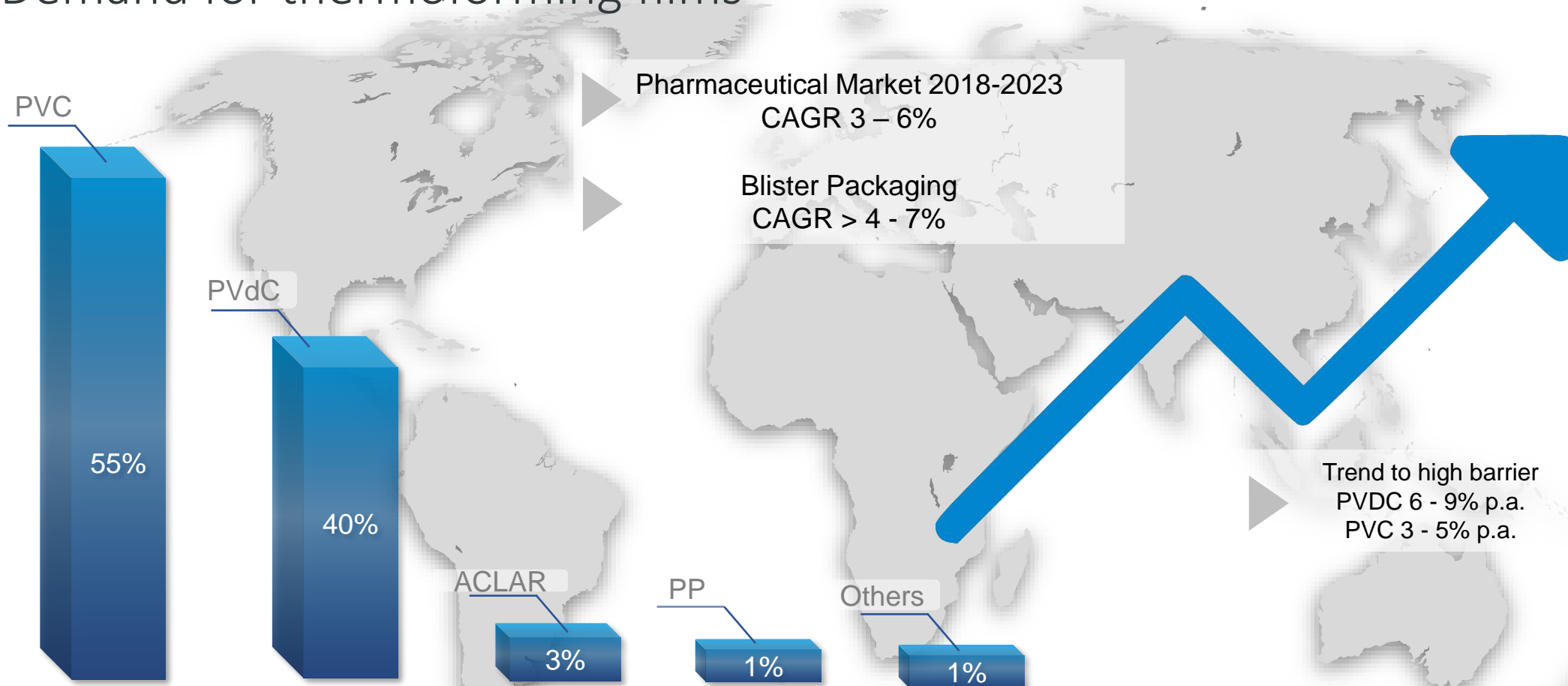


Molecular sieves,
silica and
chromatography gels



GLOBAL PHARMA BLISTER PACKAGING

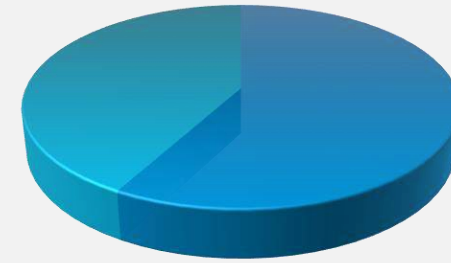
Demand for thermoforming films



Blister Packaging – in tons 2018, Source: MR 1, Perlen Packaging 2018

REFERENCES

Multinational customers
42%



Local customers
58%

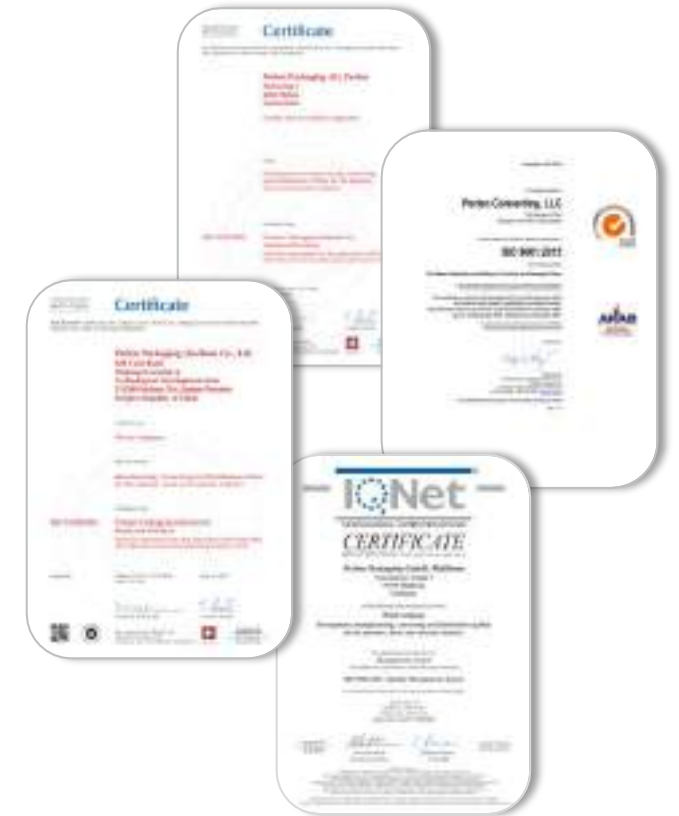


PHARMA CERTIFICATES

Compliance with the highest standards



- ISO 15378 GMP (CH, DE, CN)
- ISO 9001
- US FDA DMF No. 10686, 9072, 30501
- China CDE – Center for Drug Evaluation
- ISO 50001 (Perlen Packaging GmbH, Müllheim)
Energy Management System





02

**OUR
PRODUCTION
NETWORK**

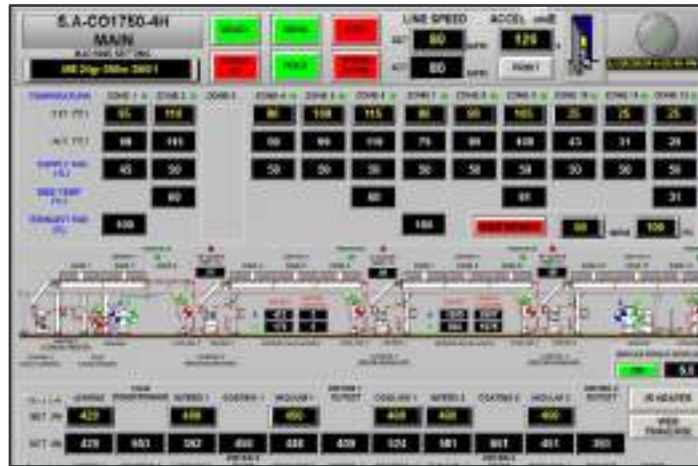
BUSINESS UNIT PACKAGING

Global production



Turnover 2020 CHF 162.3 million with 448 employees

COATING PROCESS

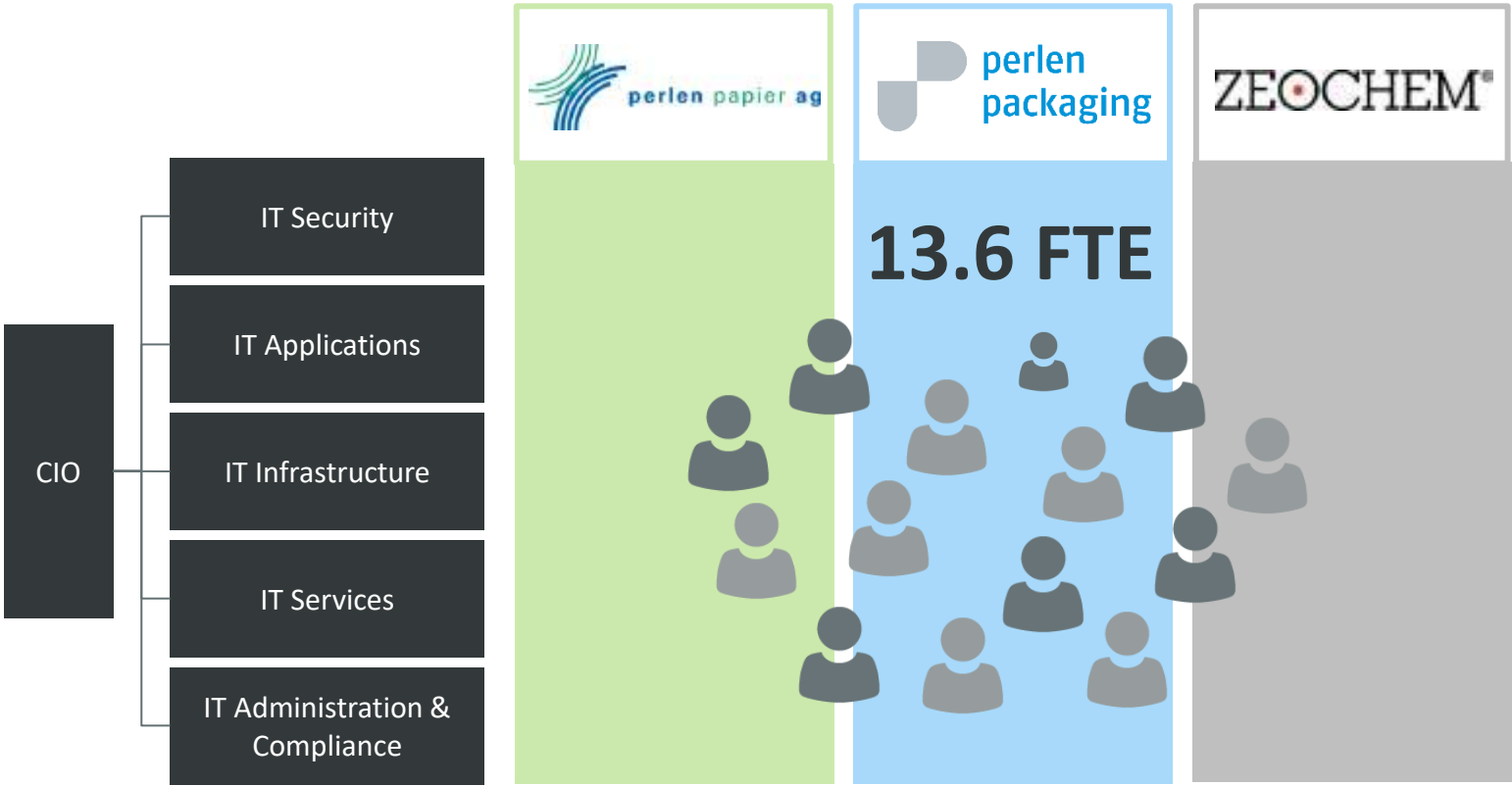


03

LEAN IT

ION
ANALYSIS
DATA
SEARCHING
VERIFICATION
CODING
SENDING

LEAN IT



How to handle this with 13.6 FTE?



Few but strong partners



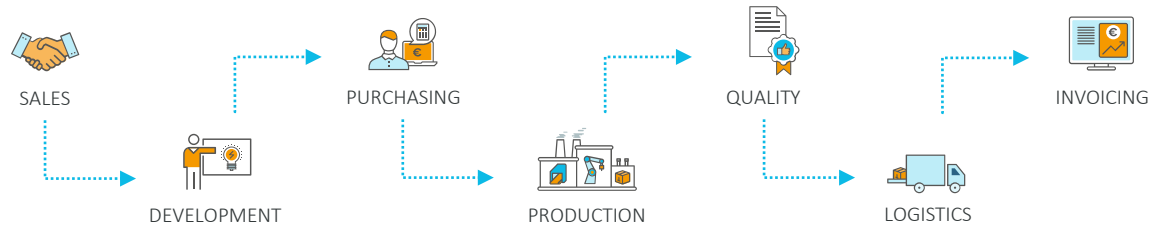
Flexible employees



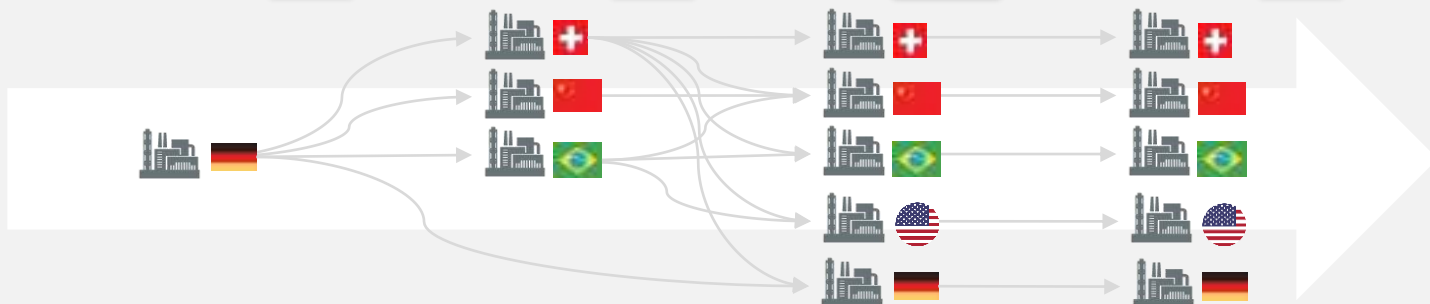
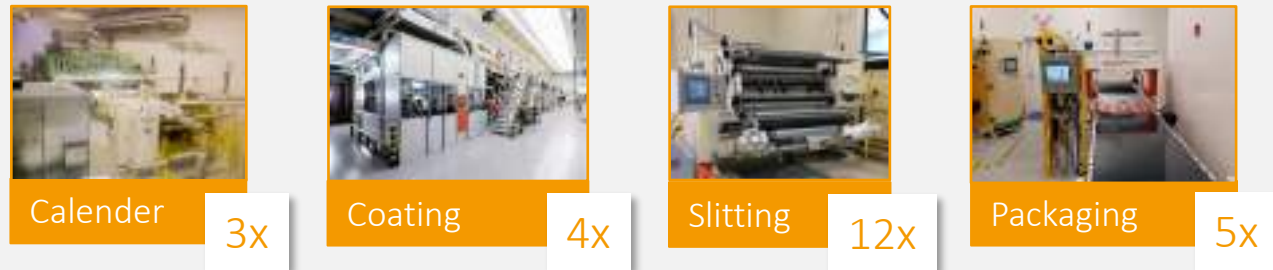
Cloud strategy

INFRASTRUCTURE

BUSINESS PROCESSES



PRODUCTION PROCESSES



SAP Business Technology Plattform

Cloud Data Lake

Cloud for Production

SAP Cloud Connector

SAP BO

SAP S/4HANA

MES CAT

5x

MES CAT Connector

5x

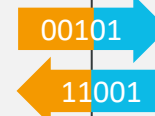
IT INFRASTRUCTURE

OPC-UA → Data Exchange

Simatic WinCC → Control and User Interfaces

ISRA → Quality Inspection

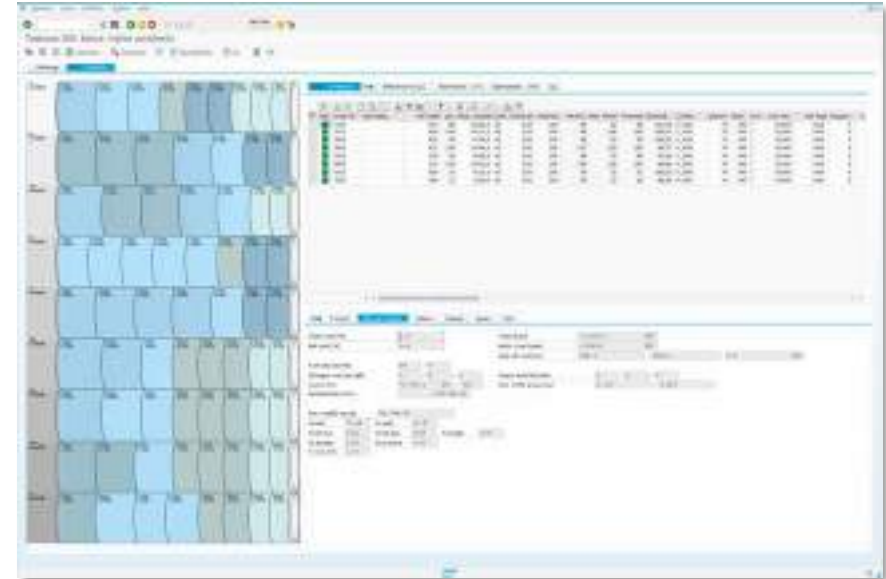
Other 3rd Party Systems



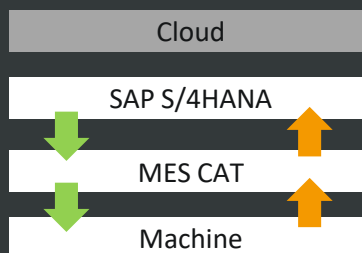
TRIM OPTIMIZATION AND SLITTING

Examples of End-to-End Integration

- TRIM Optimization integrated in SAP S/4HANA Planning
- Automated positioning of knives on Slitting Machines
- Camera-based defect recognition and storage of slitting data in SAP S/4HANA



Data Flow



PLANNED IMPROVEMENTS

- Identification of clusters of defect with machine learning for optimized slitting

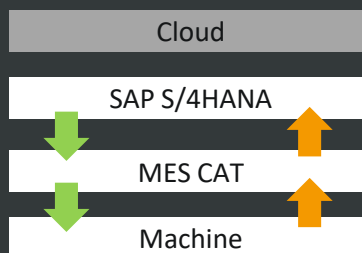
AUTOMATED ROLL TRANSPORT

Examples of End-to-End Integration

- Automated transfer of rolls from machine to machine
- Integration into SAP S/4HANA Warehouse Management and Planning
- Dynamic Routing based on Production Processes and Quality Times



Data Flow



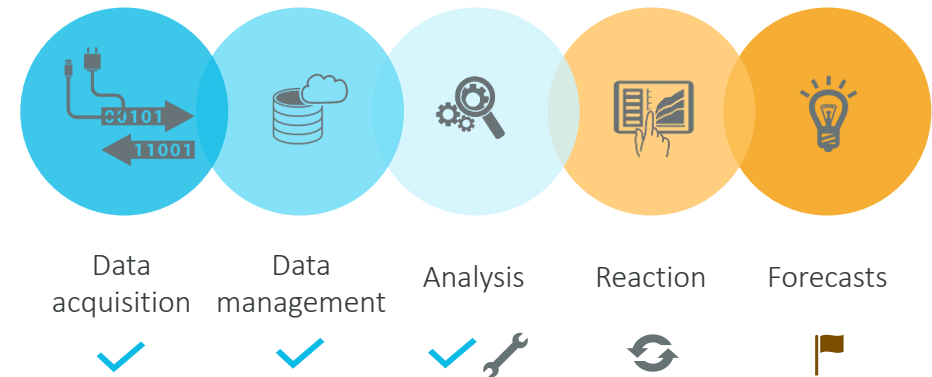
PLANNED IMPROVEMENTS

- Global Roll-Out

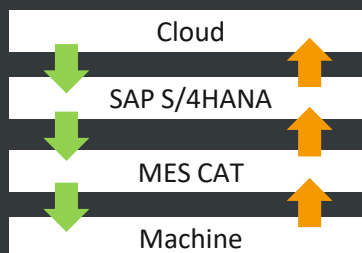
OPTIMIZED MACHINE SETUP (IOT)

Examples of End-to-End Integration

- Administration of machine setting parameters
- Centralize all IoT data across machines and locations
- Golden batch analyzes data from various locations along the value adding chain
- Optimization of machine settings based on machine learning and current production condition



Data Flow



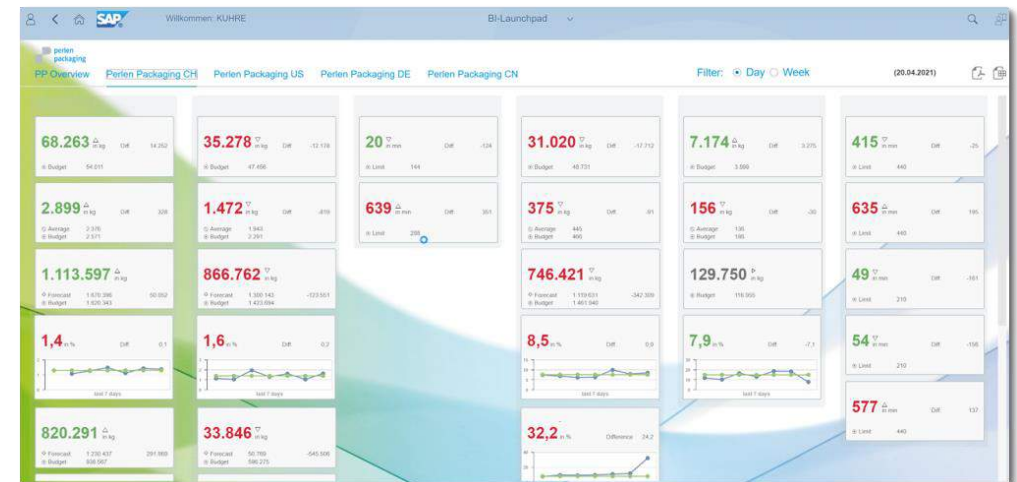
PLANNED IMPROVEMENTS

- Integration of quality inspection systems
- Find and communicate outliers and problems automatically

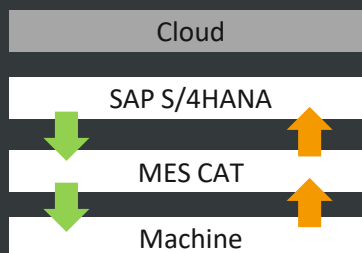
REAL-TIME INFORMATION MANAGEMENT

Examples of End-to-End Integration

- Central Cockpit for Production KPI's
- Automated reporting
- Detailed information across all production sites and hierarchical levels
- Flexible connection of data sources



Data Flow



PLANNED IMPROVEMENTS

- Further KPI's
- Detailed information by more drill-down capabilities



04

**OUR
DATA-DRIVEN
FUTURE**

DRIVERS OF EXCELLENCE

Focus areas for data-driven innovation



EQUIPMENT AUTOPILOTS

IoT and machine learning supported process monitoring and automation

DIGITAL TWINS

Centralize and make information available across locations and domains

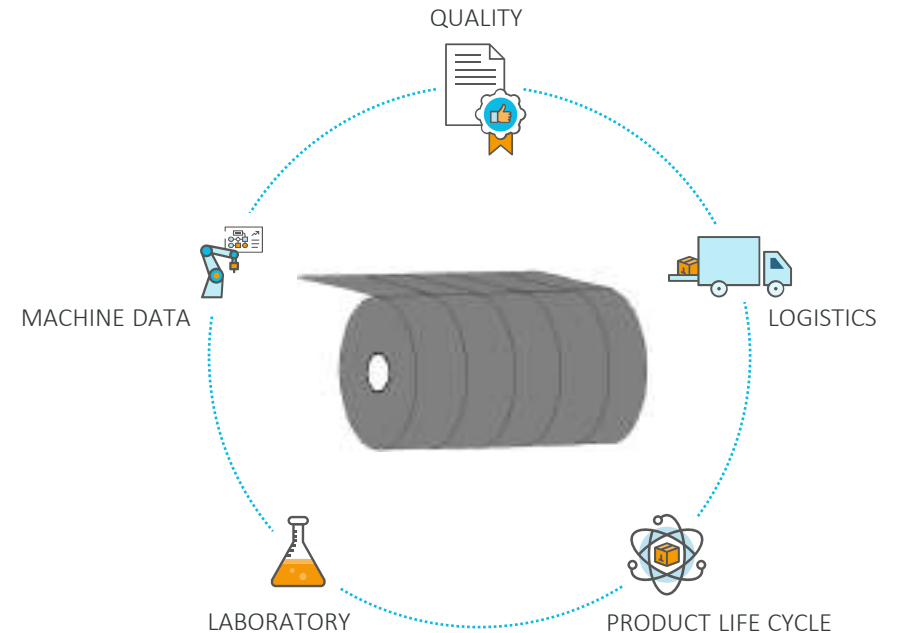
DATA DRIVES DECISIONS

Sound operational and strategic decision support for every stakeholder

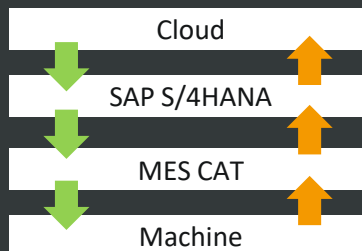
DIGITAL TWIN FOR EVERY ROLL

Future of End-to-End Integration

- Collection of all production parameters
- Collection of all quality results
- Collection of all business process parameters
- “LU Cockpit” for 360° – All Information on every roll ever produced one click away



Data Flow



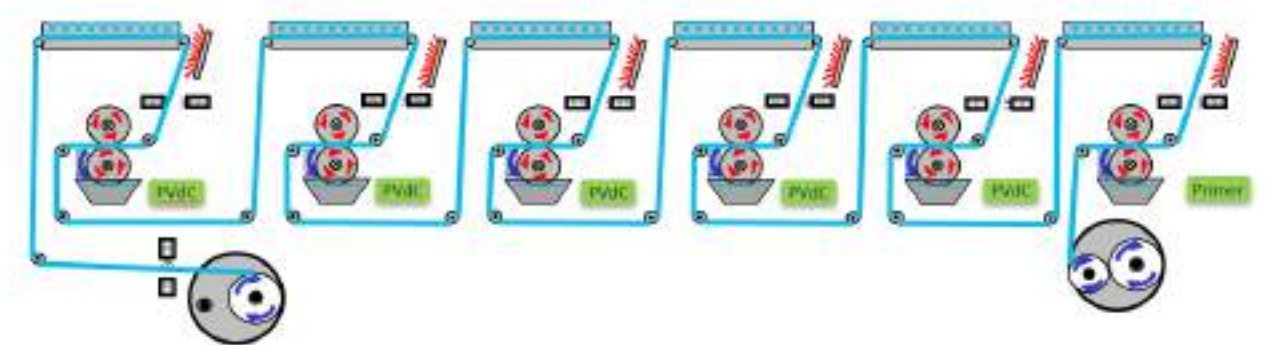
PLANNED INNOVATIONS

- Full Digital Documentation: Audit Trail
- Integration across all locations enables for an end-to-end audit trail for each produced roll

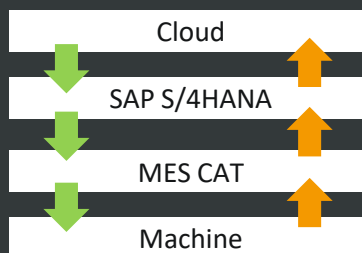
AUTO-PILOT FOR COATING

Predictive Monitoring of critical processes

- Monitor process stability
- Continuously evaluate expected quality with machine learning
- Communicate alarms and actionable data to machine operators



Data Flow





05

**WHAT OUR
PARTNERS
THINK**

Operational Excellence

- 5 Aligned and Innovative Organization
- 4 Continues Improvement and Innovation
- 3 Selected Technologies | Platforms | Partners
- 2 End-to-End Approach
- 1 Integration and Harmonization



OUR TEAM FOR YOUR SUCCESS

CONTACT US



Bradley Robb

Phone: +49 9931 981 182

E-mail: bradley.robbs@tcon-international.com



**OR VISIT US AT THE
PARTNER ZONE!**

