

Burden and Associated Factors of Coronavirus Disease (Covid-19) in Al-Buraimi Governorate, Oman

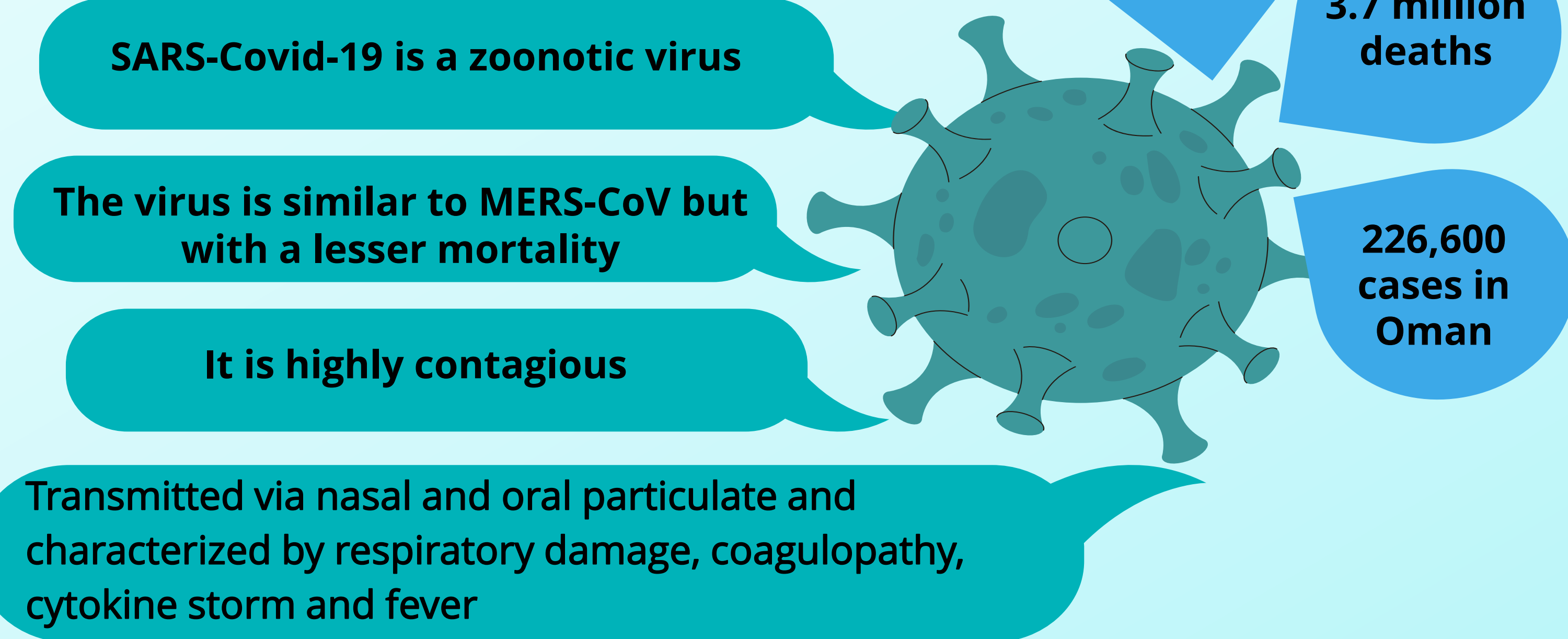
Hanan Al-Marbouai^{1,2}, Muhammad Muqet Ullah¹, Amal Al-Nafisi², Sami Saeed Almodaraa², Eman Elsayed Abd-Ellatif²

¹ Directorate of Disease Surveillance and Control, Directorate General of Health Services, Al-Buraimi Governorate, Ministry of Health, Oman
² Field Epidemiology Training Program, Ministry of Health, Saudi Arabia

40.6% of patients with underlying risk factors required hospital admission and 8% were admitted to Intensive care unit, 4.3% died compared with 0.67% death in those without any identifiable risk factors

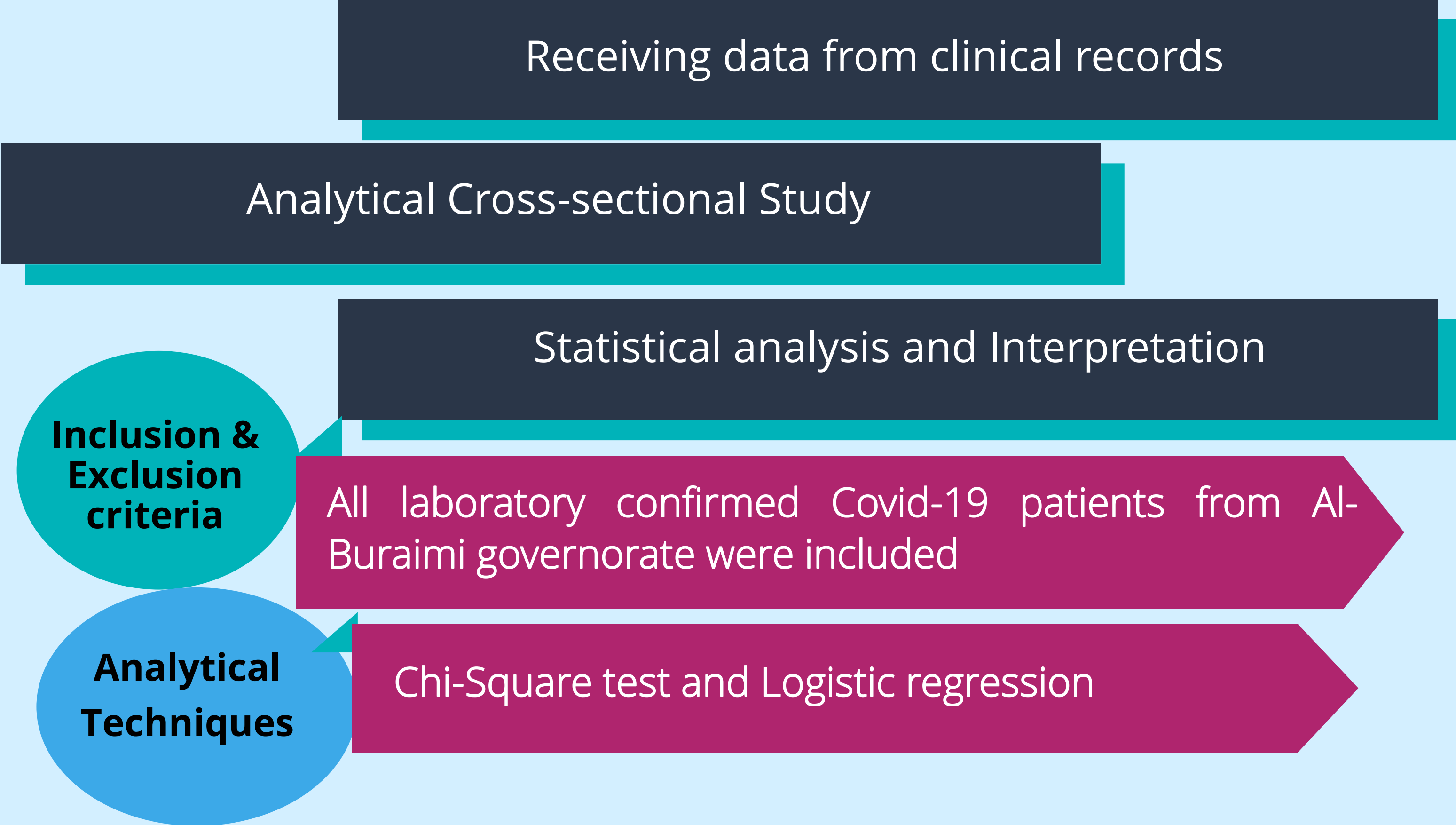
Introduction

The Coronavirus diseases 2019 is a global pandemic that has been a significant health challenge since its origin in Wuhan, China

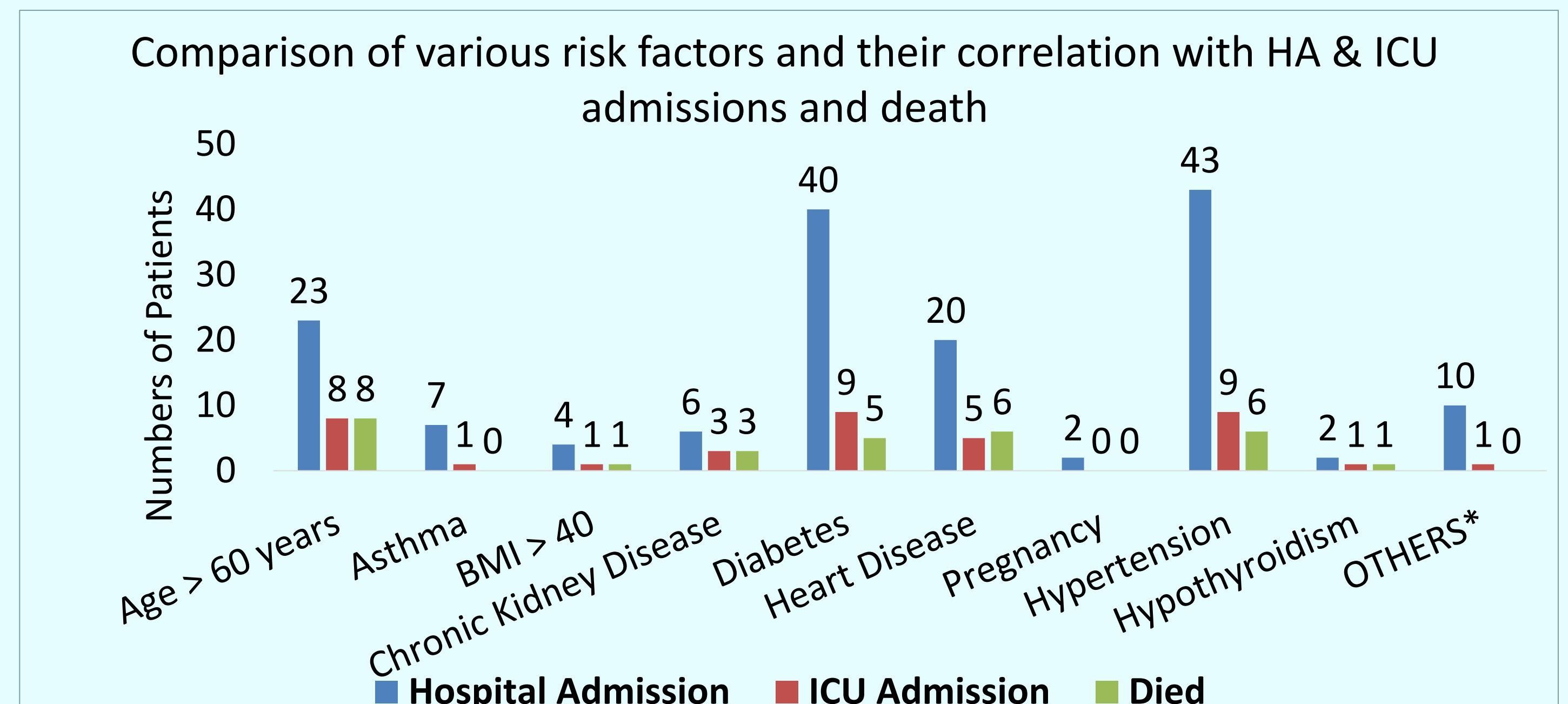
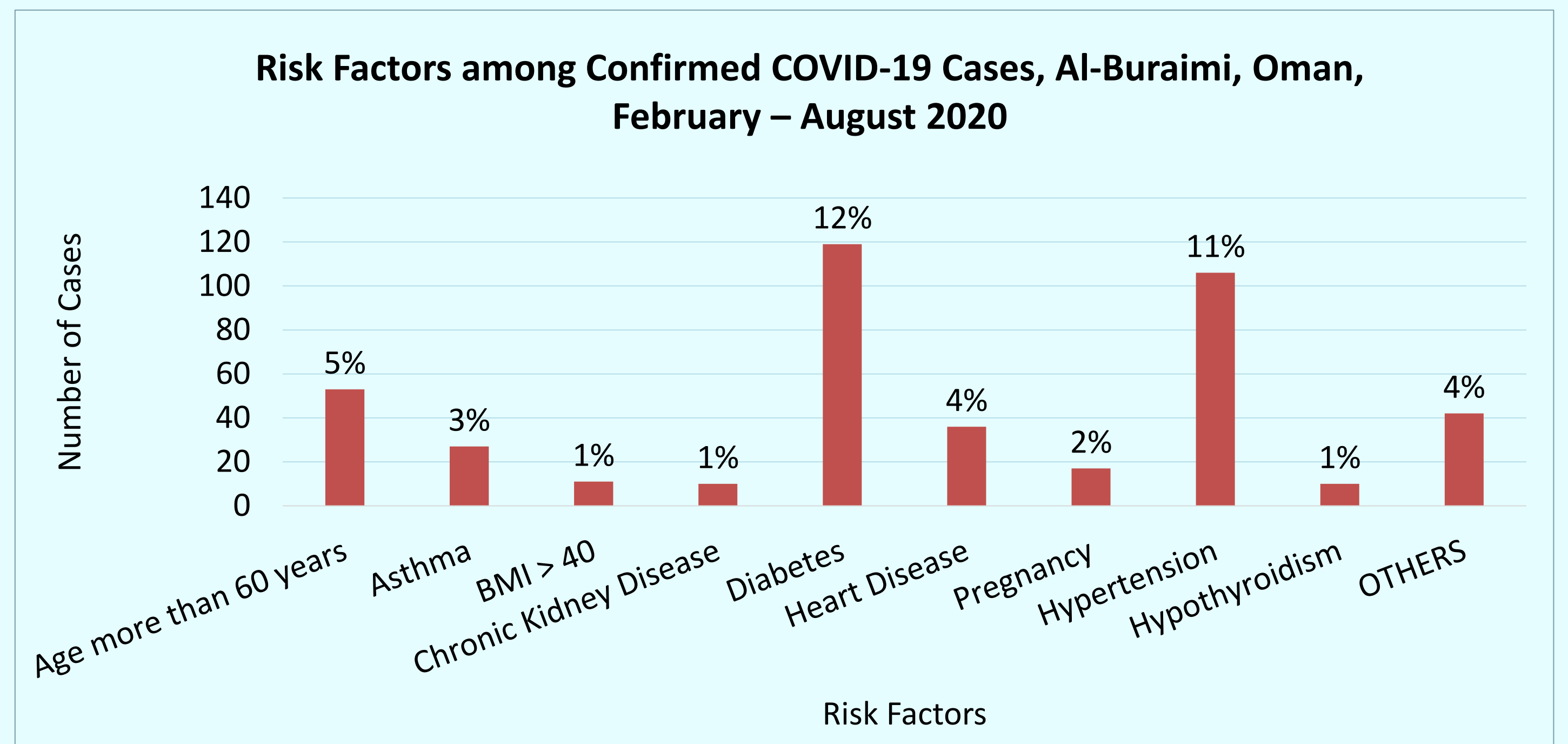
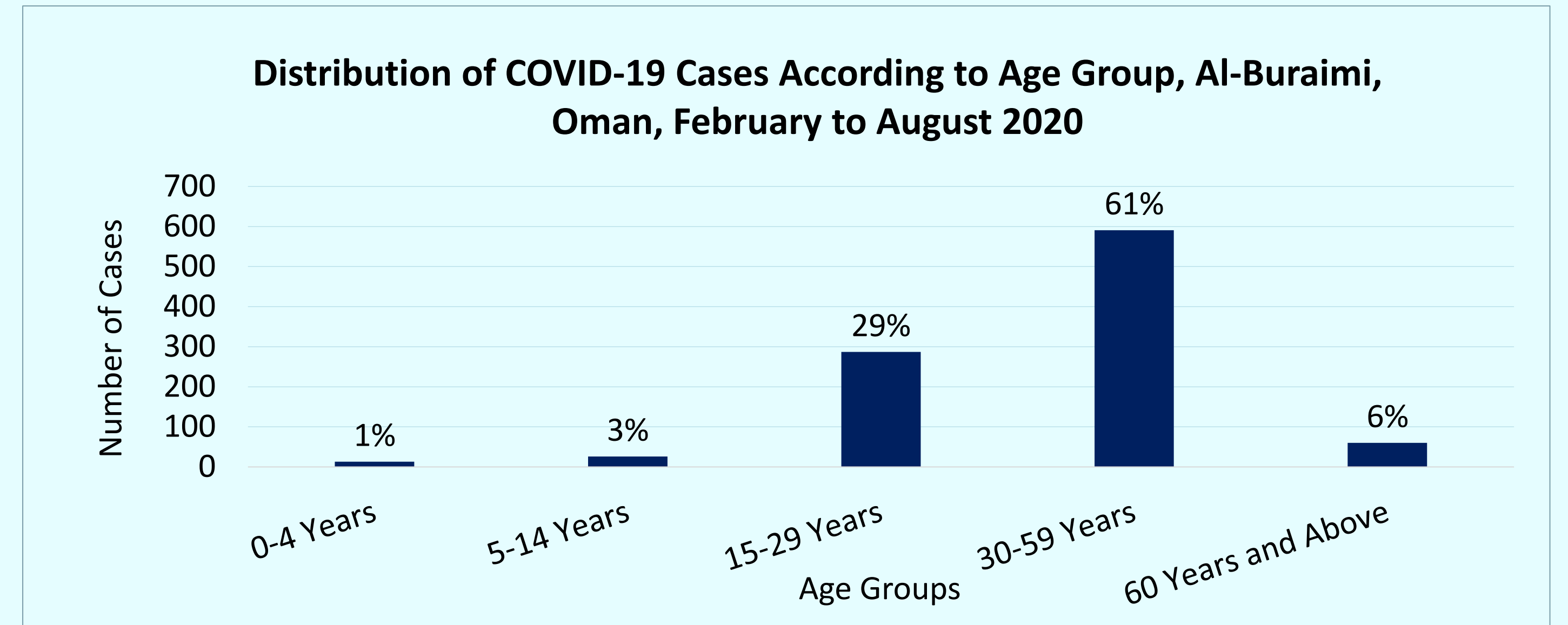


Methodology

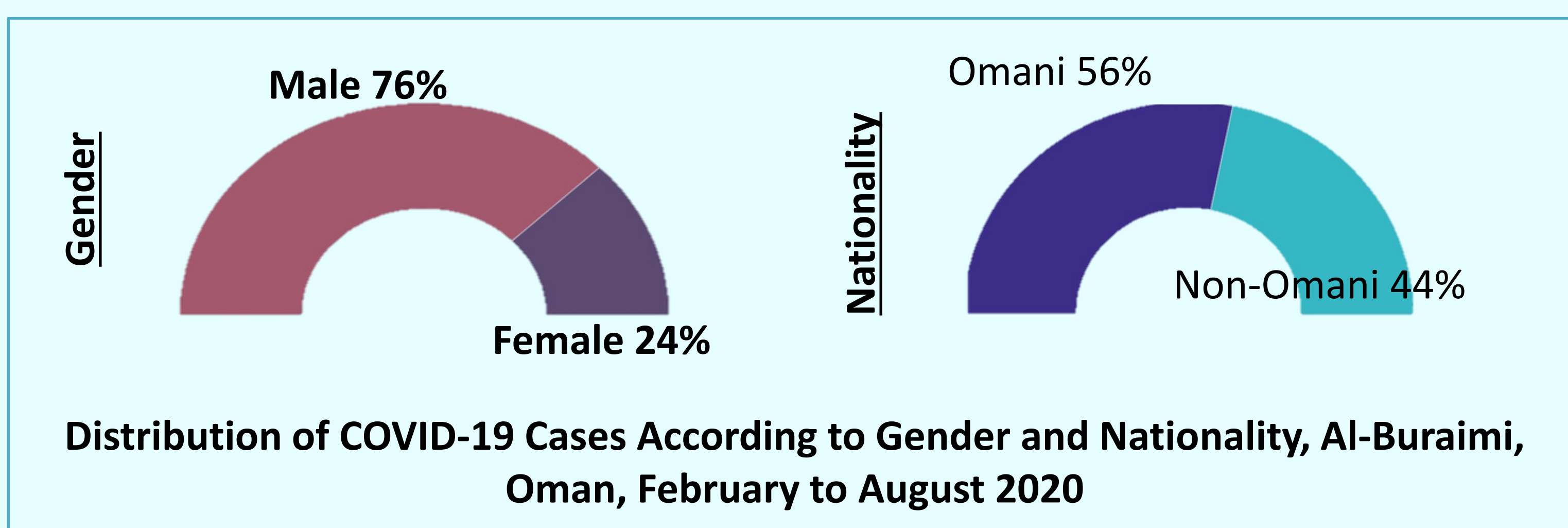
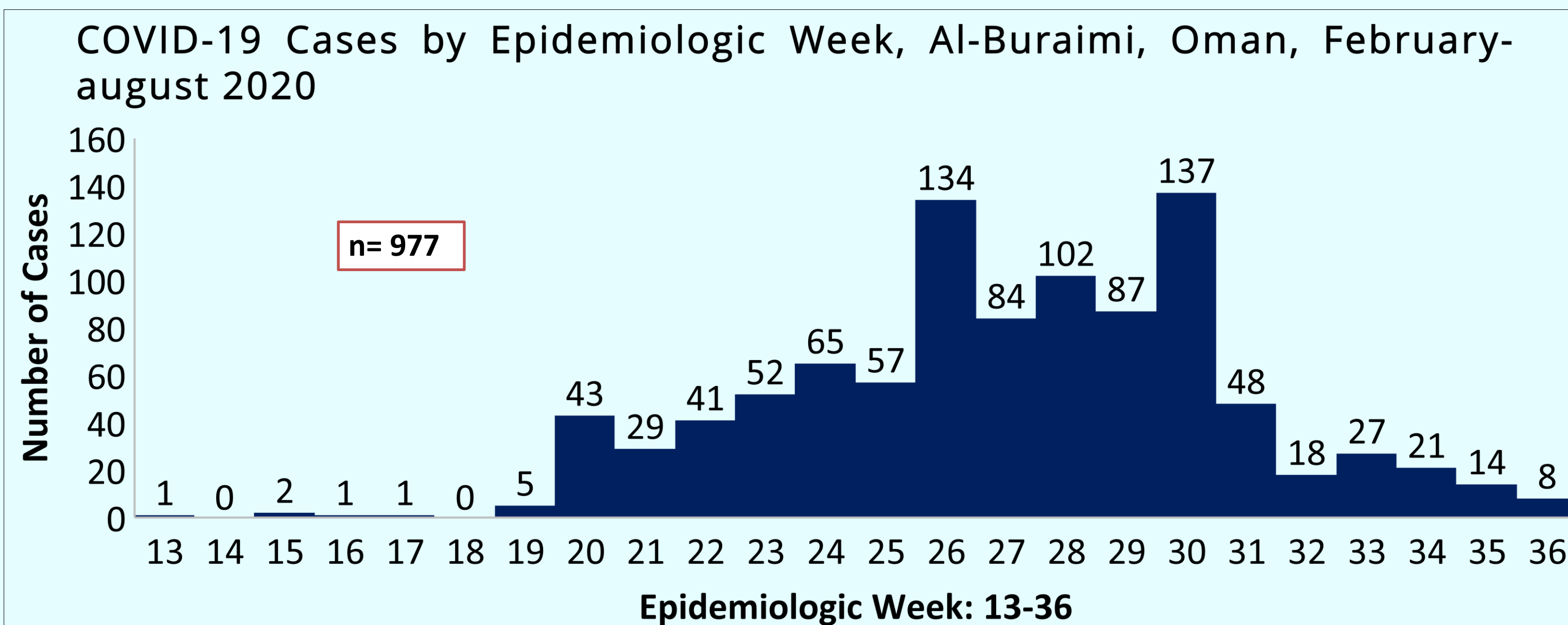
Clinical data and demographics were used from electrical records of all Covid-19 confirmed patients in the Al-Buraimi Governorate between February 1 to August 31, 2020



Results



Results



Regression between Risk Factors Presentation and Hospital Admission, ICU Admission, and Death of COVID-19 Cases, Al-Buraimi, Oman, February to August 2020

Variables	Odd Ratio	95% C.I. for Odd Ratio	
		Lower	Upper
Hospital Admission	5.9	3.9	8.9
ICU Admission	4.4	2.0	9.8
Death	6.8	2.3	20.0

Conclusion & Recommendations

- ✓ Findings consistent with other investigations: older patients, patients with comorbidities at increased risk for severe disease
- ✓ 16% of Oman population has diabetes
- ✓ 34% of Oman population has hypertension
- ✓ 3% of Oman population is ≥ 65 years
- ✓ High-risk groups should be targeted for priority vaccination
- ✓ Healthcare providers who see high risk patients should be reminded of the potential for severe disease, importance of early diagnosis, prompt treatment