



SINGLE-USE

# **BRONCHO VIDEOSCOPE**

3 SIZES,  
5 APPLICATION  
AREAS



# SBV-1 SINGLE-USE BRONCHOSCOPE



## INGENUITY AND INSIGHT

Full range of single-use bronchoscopes for all the clinical needs of critical care and the bronchoscopy suite.

A larger working channel bronchoscope for interventional procedures. The plug and play system allows ease of use from standard to difficult or emergency procedures.



**No Sterilisation**



**No Cross Infection**

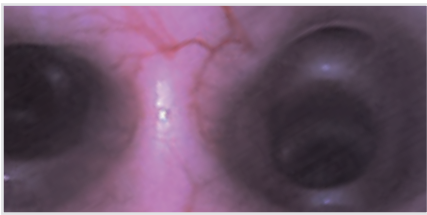


**No Maintenance**

FEATURES



With **120°** field of view and **0.5-120mm** depth of field, bring a wide and clear field of vision and can help identify the pathological changes in the bronchial lumen.



Superior optical performance. Accurately shows subtle details of the interiors of the bronchial tree.



The **±60°** shaft rotation supports a smoother insertion of the bronchoscope, optical adaptation during procedures and easier access to biopsy port.



The direction of the suction button is adjustable, which can prevent tangled pipes.



Suitable for both left and right hands.



Slender and flexible design allows for easier intubation for the operator and procedural comfort for the patient.

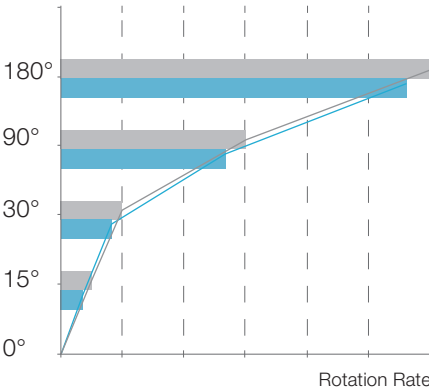


Two-way bending **220° Up/Down** supports smoother insertion into upper lobe bronchi.



The passive bending function allows the bronchoscope to navigate the airways with ease; benefiting the patients' procedural experience.

ROTATION ANGLE

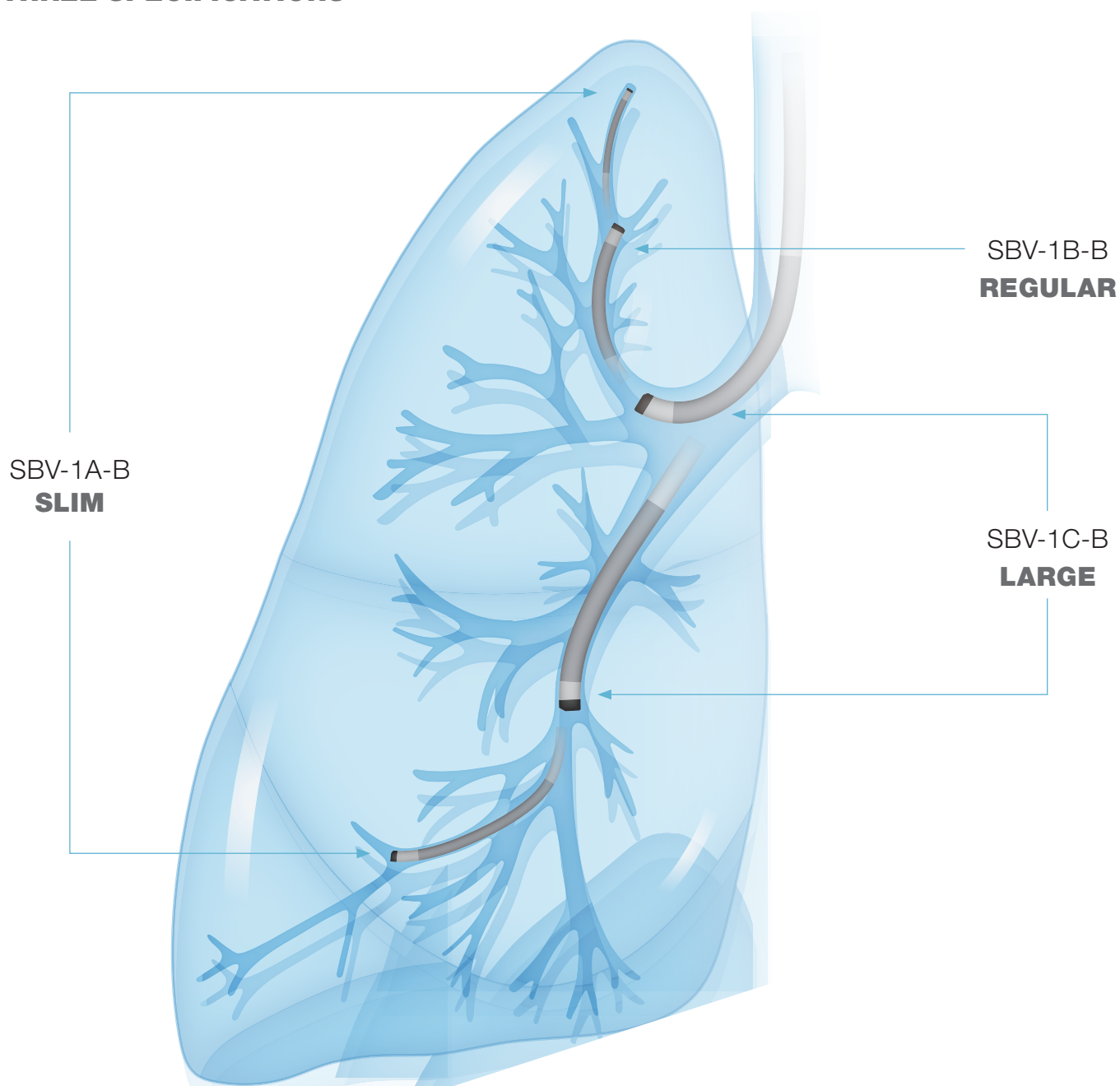


Control handle rotation   Insertion part rotation

Data source: Obstructed rotation manoeuvrability internal test

**Excellent manoeuvrability** ensures that the operation is on effective. Even with instruments in the working channel, it can be manipulated at will.

## THREE SPECIFICATIONS



### SLIM



**UltraSlim** can reach even further. With SBV-1A-B, a  $\Phi$  2.8mm insertion section combined with a  $\Phi$  1.2mm working channel.

### REGULAR



The most **versatile** bronchoscope. SBV-1B-B, with a slim  $\Phi$  4.2mm insertion section combined with  $\Phi$  2.0mm working channel.

### LARGE



**Therapeutic** bronchoscope SBV-1C-B with a  $\Phi$  5.6mm insertion section and a  $\Phi$  2.8mm working channel. Large channel achieves exceptional fluids from patient's bronchi.



SBV-1A-B/B-B/C-B

Model	Field of View	Depth of View Field	Outer Diameter of Insertion Section (OD)	Working Channel (ID)	Working Length	Total Length	Angulation Range
SBV-1A-B			φ 2.8mm	φ 1.2mm			
SBV-1B-B	120°	0.5~120mm	φ 4.2mm	φ 2.0mm	600mm	920mm	220° Up/Down
SBV-1C-B			φ 5.6mm	φ 2.8mm			



SBV-1

HDVS-S100A

Model	Size	Weight	Power Supply Requirement	Output	Interface	Function
HDVS-S100A	300mm×225mm×57mm	2.5Kg	100-240V	DVI*1, SDI*2	Foot Switch and USB	WHT-BAL, GAIN, FREEZE, ZOOM, LED, ENH/S-IMAGE, VIDEO, PHOTO, USB



HDVS-S100A

Foot Pedal



KF2 1S-MED GP25

For more information please contact [endoscopy\\_eu@fujifilm.com](mailto:endoscopy_eu@fujifilm.com) or

Manufactured by



**Scivita Medical Technology Co.Ltd.**

No.8, Zhong Tian Xiang, Suzhou Industrial  
Park, Suzhou, Jiangsu,  
Province, P.R.China, 215000  
Tel.: +86-512-8187 7788  
[www.scivitamedical.com](http://www.scivitamedical.com),  
[info@scivitamedical.com](mailto:info@scivitamedical.com)

Distributed by



**FUJIFILM Europe GmbH**

Balcke-Dürr-Allee 6 | 40882 Ratingen, Germany  
+49 2102 5364-0 | [endoscopy\\_eu@fujifilm.com](mailto:endoscopy_eu@fujifilm.com)  
[www.fujifilm-endoscopy.com](http://www.fujifilm-endoscopy.com)

The product information is for reference only, please refer to the packaging instruction and Operating instruction provided with this product for complete Indications for Use, Contraindications, Warnings, Precautions, Adverse Events, and Instructions prior to using this product. This product should be used by properly licensed medical professionals, the medical professional must use their professional judgment in making any final determinations in product usage and technique. The technical information of this product may be changed or updated in the future, please refer to the product information published on Scivita's official website.  
SAP 70100154204. 04/2022.