

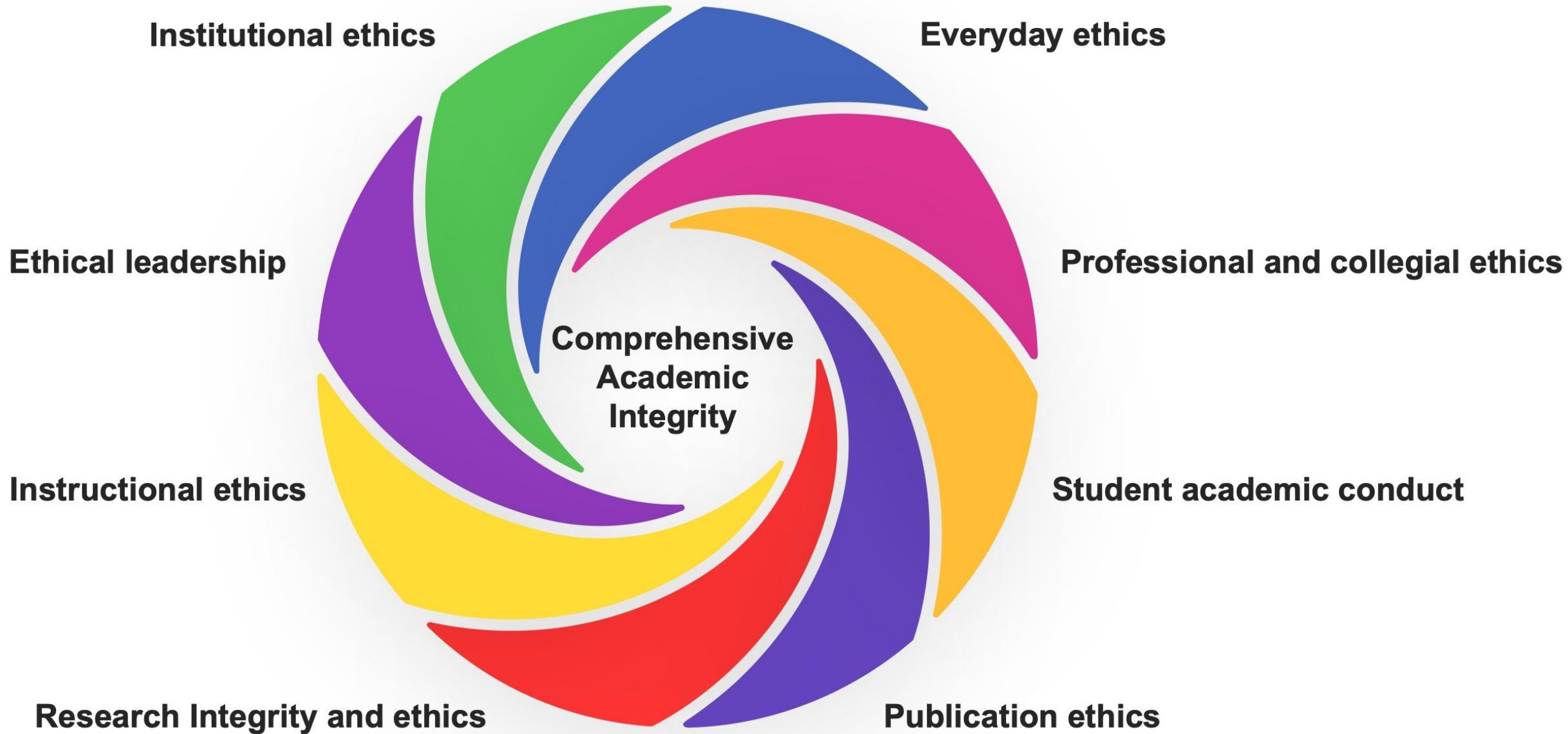
# Areas of Tension with Artificial Intelligence and Integrity

**WCRI 2024: Symposium 2: The impact of generative AI on integrity in education, research, and the translation of research into policy**

Sarah Elaine Eaton, PhD  
University of Calgary, Canada

June 3, 2024

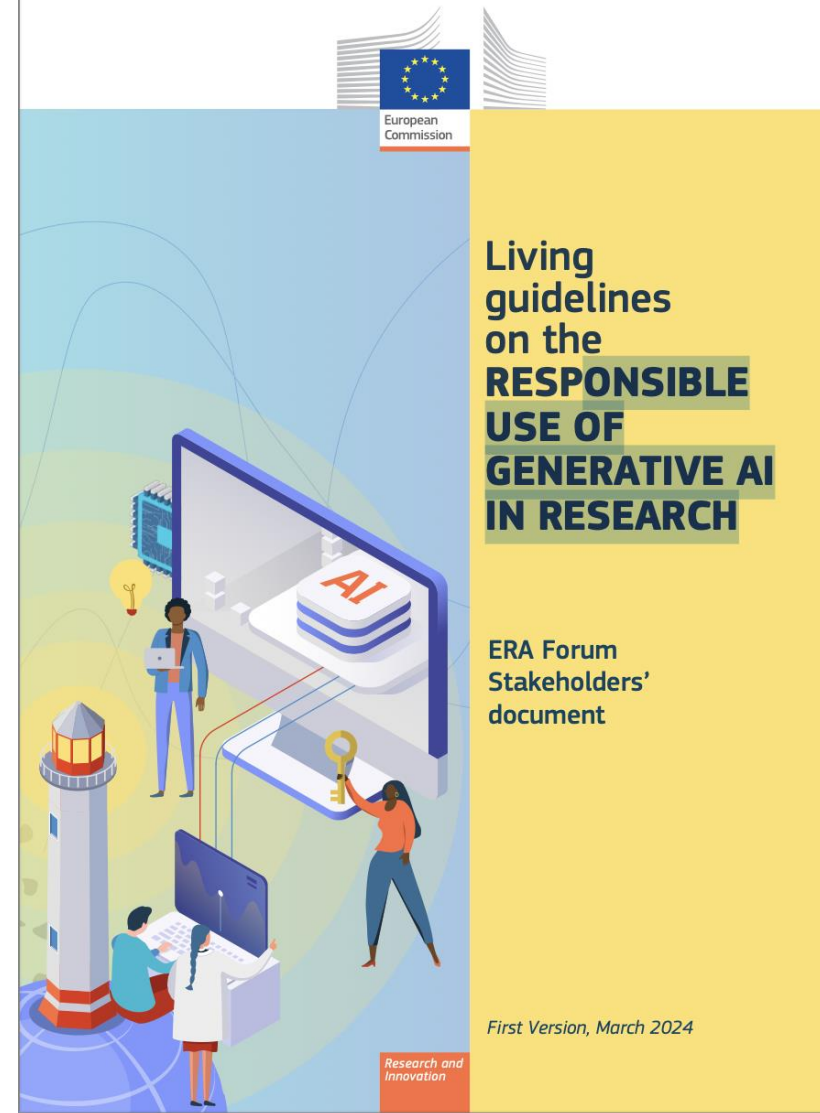




From the Introduction to the *Second Handbook of Academic Integrity* (2024)

European Commission, European  
Research Area Forum, 2024

# New Guidance in Europe





# Guidance for various groups



Adapted from European Commission, 2024



## Key message

“Generative AI provides many opportunities for different sectors. However, it also harbours risks, such as the large-scale generation of disinformation and other unethical uses with significant societal consequences.”

(European Commission, 2024, p. 3)

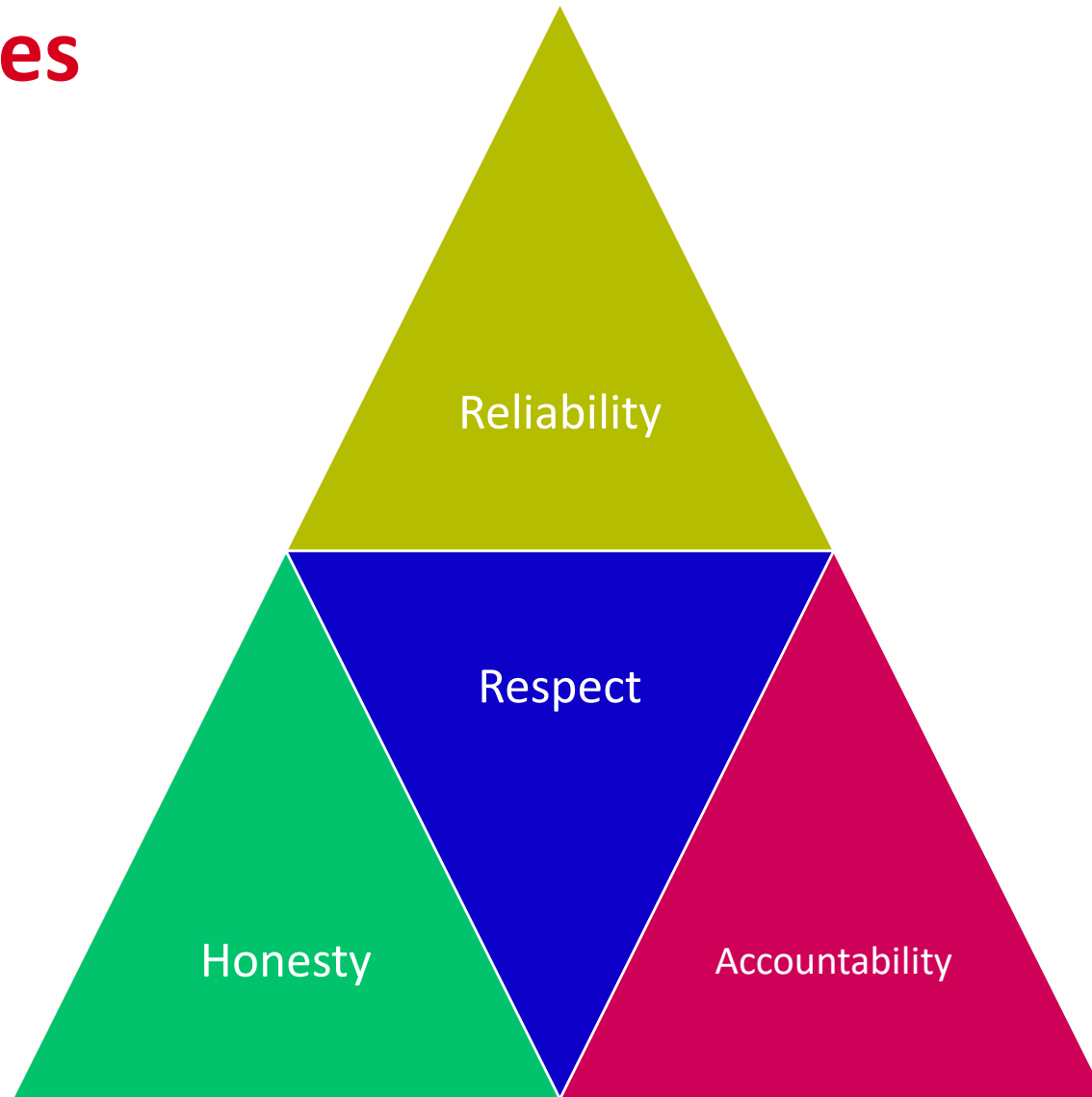


# Key Principles

“ The set of principles framing these guidelines are based on pre-existing relevant frameworks:

- the European Code of Conduct for Research Integrity<sup>10</sup>;
- the work and guidelines on trustworthy AI, developed by the High-Level Expert Group on AI” (European Commission, 2024, p. 5)

# Key Principles



Adapted from (European Commission, 2024, p. 5)



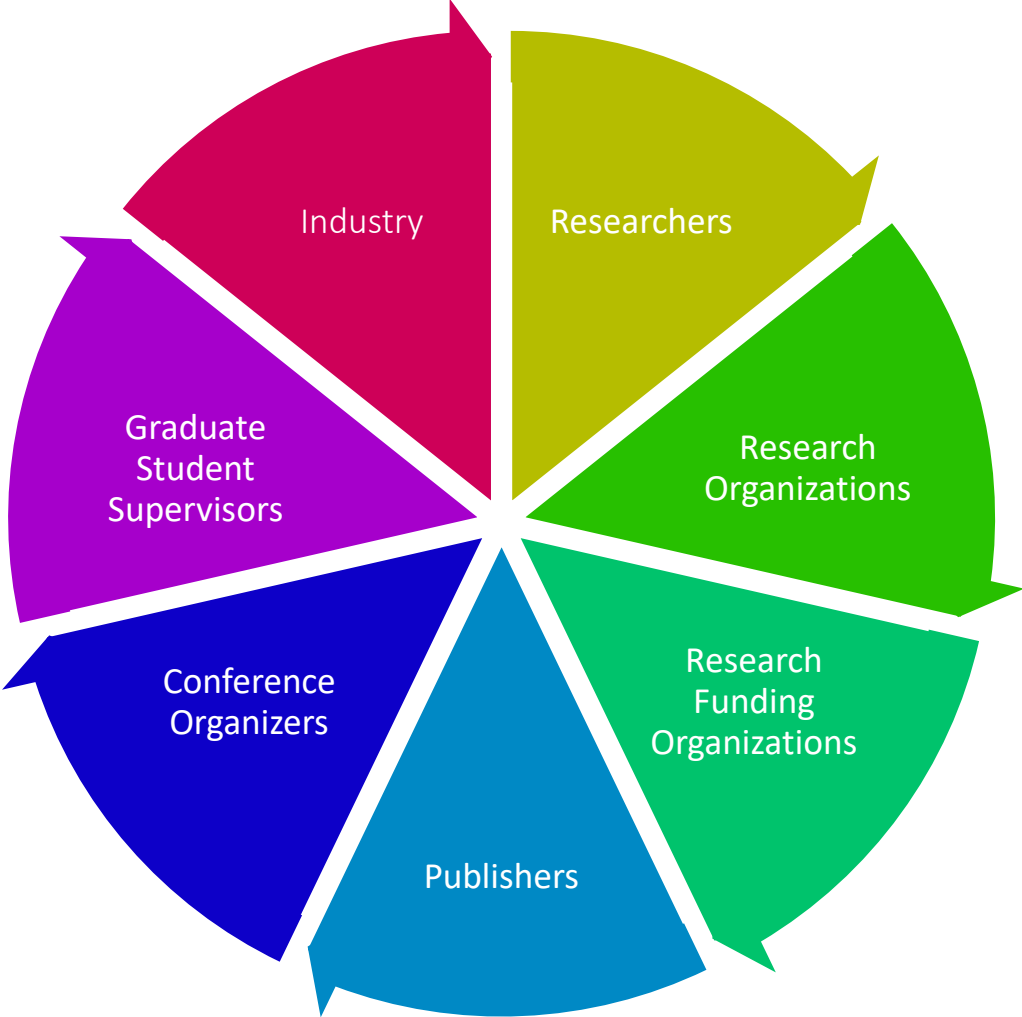
# Limitations of the EU Guidance

- Focus on individual researchers, research organizations, and researcher funders.
- Is silent on the role of publishers and others involved in knowledge mobilization.
- Provides little guidance on the responsibilities for industry.
- Provides little guidance for supervisors of graduate students or research trainees.





# Guidance for various groups: Improved



Eaton, WCRI 2024



# Continued Lack of Policy in Higher Education

- Policies are slow to develop.
- Generative AI policies may or may not be linked to integrity policies.
- Guidance and legislation at ministerial and governmental levels is generally seen as desirable and sometimes a preferable precursor to organizational-level policies.

# References



European Commission (2024, March). Living Guidelines on the Responsible Use of Generative AI in Research.

# Contact Info

- Sarah Elaine Eaton
- Werklund School of Education, University of Calgary
- [seaton@ucalgary.ca](mailto:seaton@ucalgary.ca)