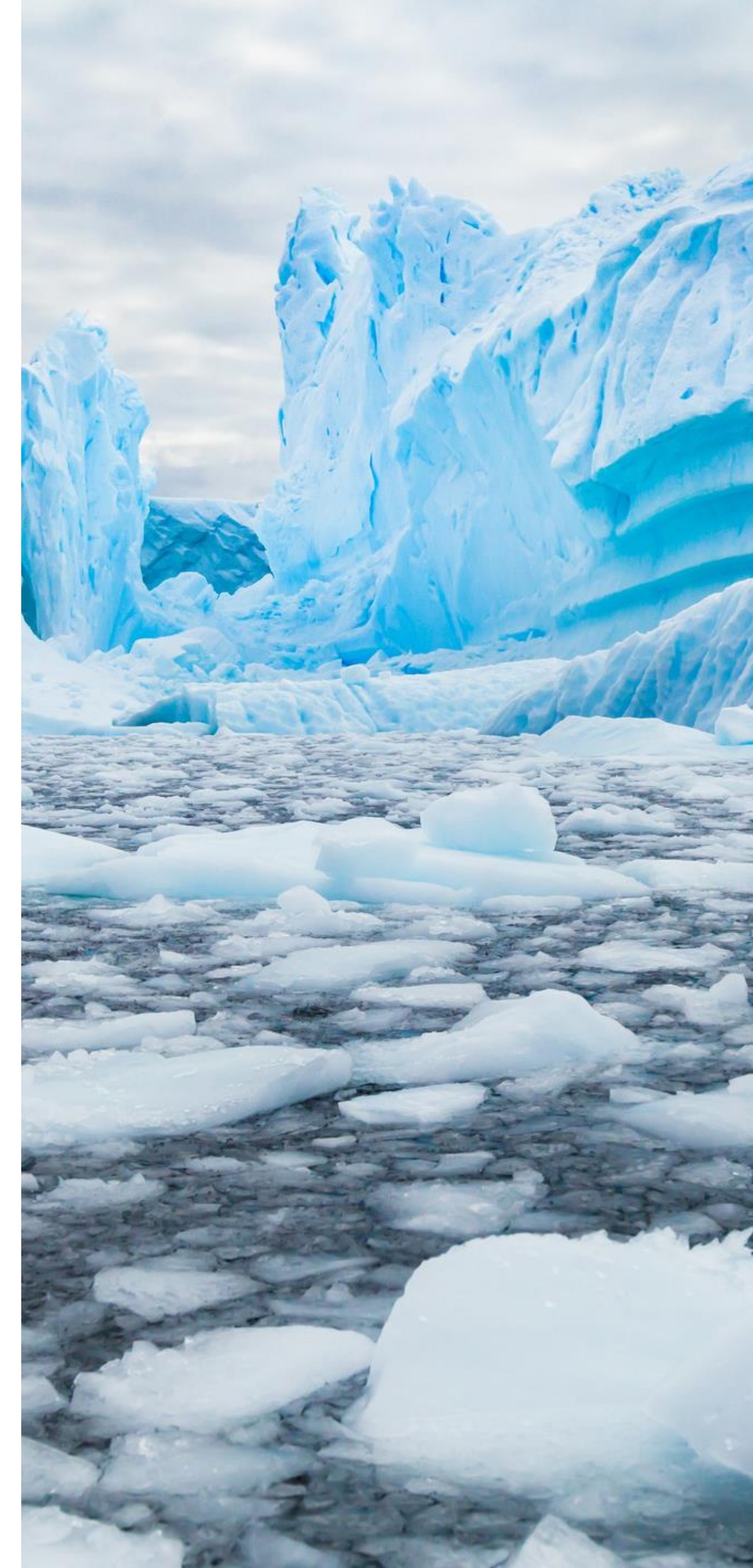


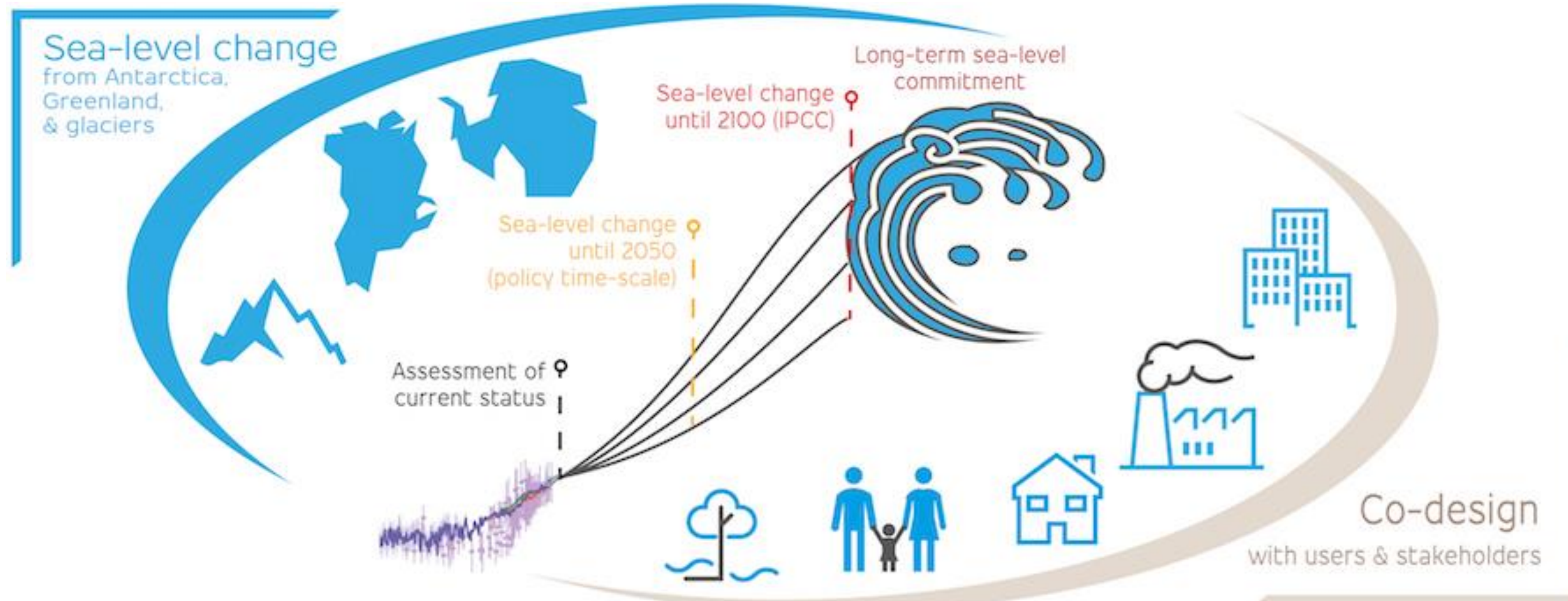
# PROTECT – some lessons learned

G. Durand, on behalf of the PROTECT consortium  
05/09/2024 – European Polar Science Week





# PROTECT in a nutshell



Assess and project changes in the land-based cryosphere, with fully quantified uncertainties, in order to produce robust global, regional and local projections of SLR on a range of timescales



> 130 publications (~10% high impact)

EGU inter-journal special issue  
“Improving the contribution of land Cryosphere to sea-level rise projections”

# Widening our expertise...



Expand the time horizon of each sub-community:

- Focus on 2050 in sheet modeling
- Disseminate the importance of looking on long time scale, minimum/committed SLR -> Policy Brief

PROTECT / COCLICO / SCORE

When will a 2-metre rise in sea level occur, and how might we adapt?

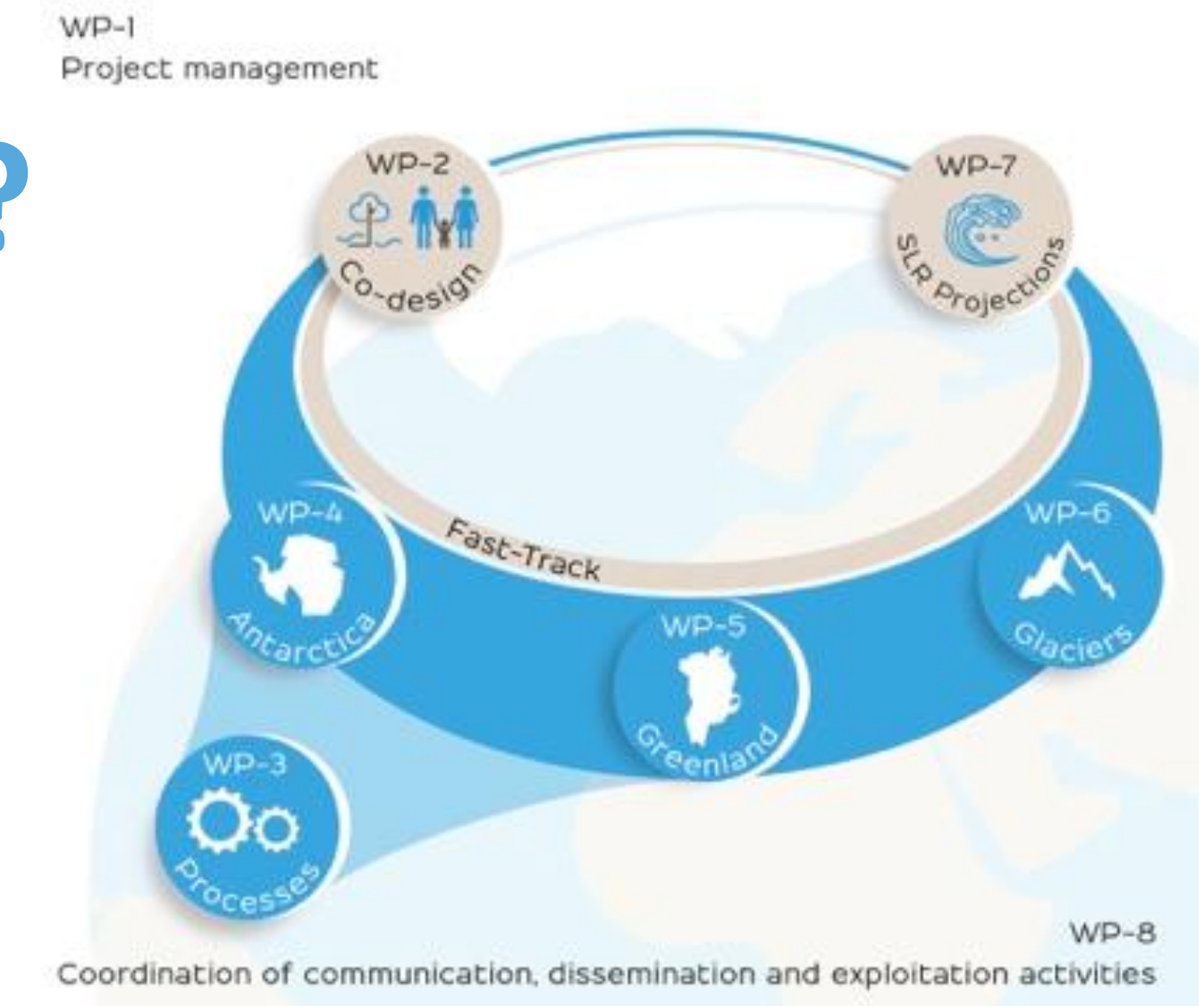
**Proteet** **CoCliCo**  
CRYOSPHERE & SEA LEVEL coastal climate core services



# Fast/Full-Track... What about a Long-term Track ?

## Objectives of the Fast-Track

- Implement and test the work flow through the cascading expertises
- Prepare forcing
- Have time to consult stakeholders/practitioners and adjust our projections to their need
- Leave time to improve models (e.g. Damage, Calving, Melting, coupling)



**Developing models takes time!!!**

**We must balance our efforts between improving models and producing projections**