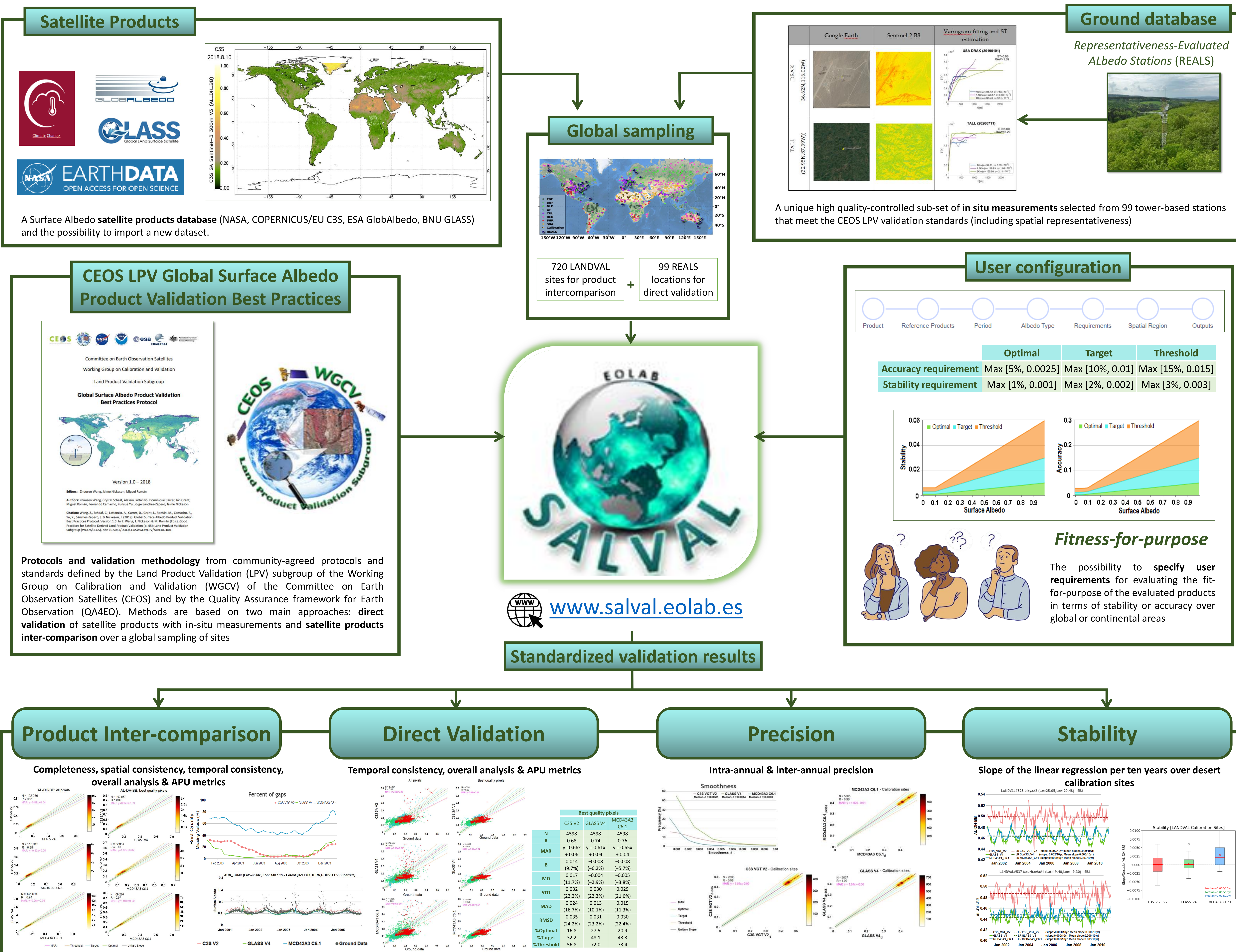


SURFACE ALBEDO VALIDATION (SALVAL) PLATFORM: TOWARDS CEOS LPV VALIDATION STAGE 4

Jorge Sánchez-Zapero ¹, Enrique Martínez-Sánchez ¹, Fernando Camacho ¹, Zhuosen Wang ^{2,3}, Dominique Carrer ⁴, Crystal Schaaf ⁵, Jaime Nickeson ⁶ and Michael Cosh ⁷

¹EOLAB, ²ESSIC U. Maryland, ³Terrestrial Information Systems Laboratory NASA GSFC, ⁴CNRM Météo France, ⁵School for the Environment U. Massachusetts Boston, ⁶SSAI NASA GSFC, ⁷USDA Agricultural Research Service

The overall aim of SALVAL is to bring together validation good practices protocols, ground data and satellite products to provide users with traceable (i.e. reproducible) validation results allowing reaching CEOS WGCV LPV validation Stage 4.



The SALVAL tool provides the user with:

- ❖ A user-friendly interface for comparison of new satellite-based land surface albedo data products against ground reference data and existing validated products.
- ❖ A traceable, transparent, and consistent methodology following the CEOS WGCV LPV Surface Albedo validation good practices protocol for conducting the validation exercise.
- ❖ A flexible tool that allows for setting up the exercise with user defined requirements, albedo quantities, extents, or periods of interest to analyse results either interactively (via graphs and maps) or creating a standardized validation report in pdf format.
- ❖ A tool to benchmark new products, update product validation results or add new ground reference data.

Contact: (info@salval.eolab.es) in case of technical issues or if you want to make contribution to this scientific community:
I. with new products to be permanently included in SALVAL,
II. with new in-situ reference measurement data,
III. suggestions.

Jorge Sánchez Zapero
EOLAB CTO & Research Engineer

(+34) 963769448

jorge.sanchez@eolab.es

<http://es.linkedin.com/in/jorgesanchezzapero>



www.eolab.es



→ **REFERENCE:** Sánchez-Zapero, J., Martínez-Sánchez, E., Camacho, F., Wang, Z., Carrer, D., Schaaf, C., García-Haro, F.J., Nickeson, J., Cosh, M., 2023. Surface Albedo Validation (SALVAL) Platform: Towards CEOS LPV Validation Stage — Application to Three Global Albedo Climate Data Records. *Remote Sens.* 2023, Vol. 15, Page 1081 15, 1081. <https://doi.org/10.3390/RS15041081>