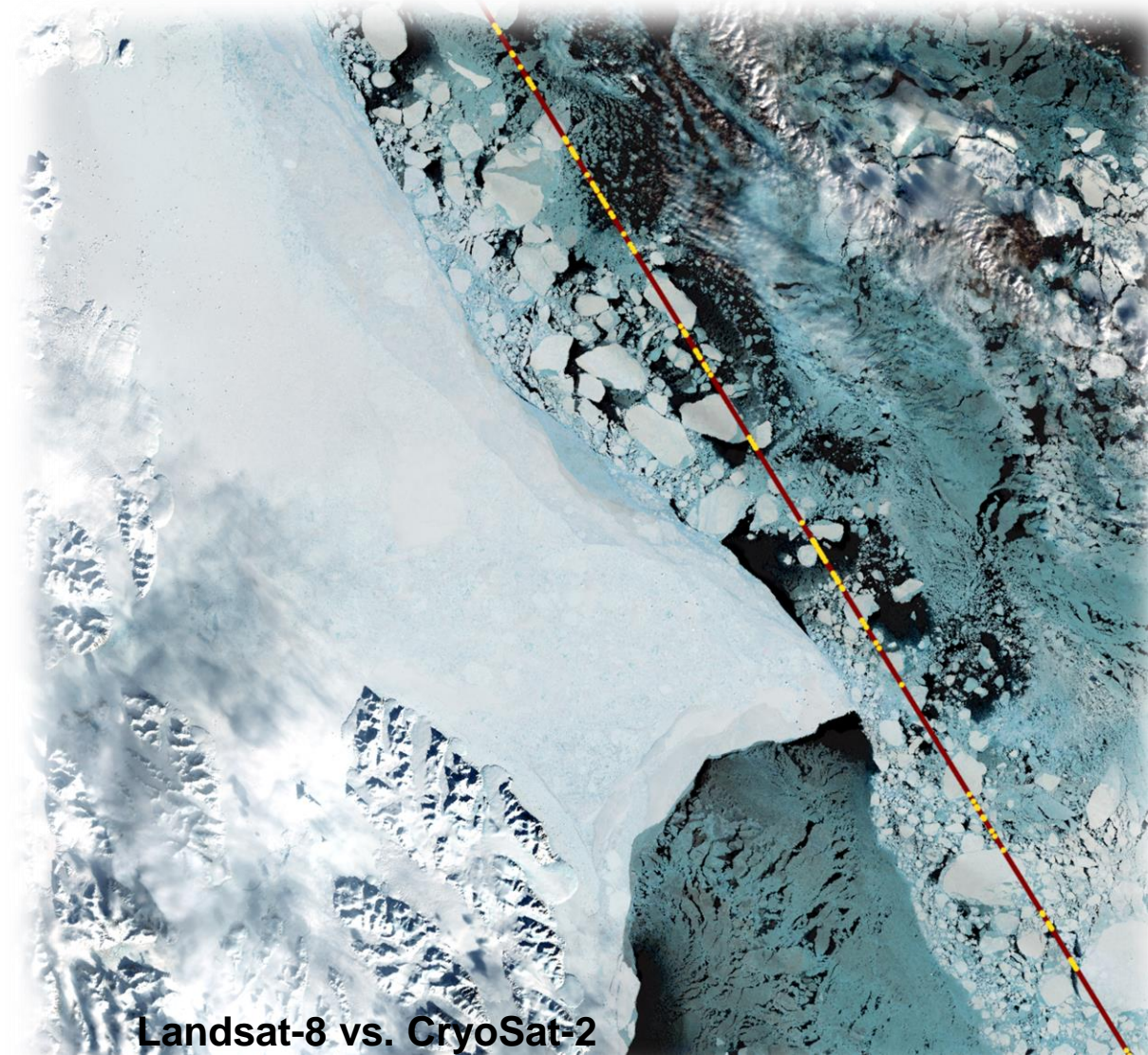


Open water classification with CryoSat-2, ICESat-2, and other altimetry missions

Felix L. Müller, Denise Dettmering, and Florian Seitz

Deutsches Geodätisches Forschungsinstitut (DGFI-TUM)
Technical University of Munich, Germany

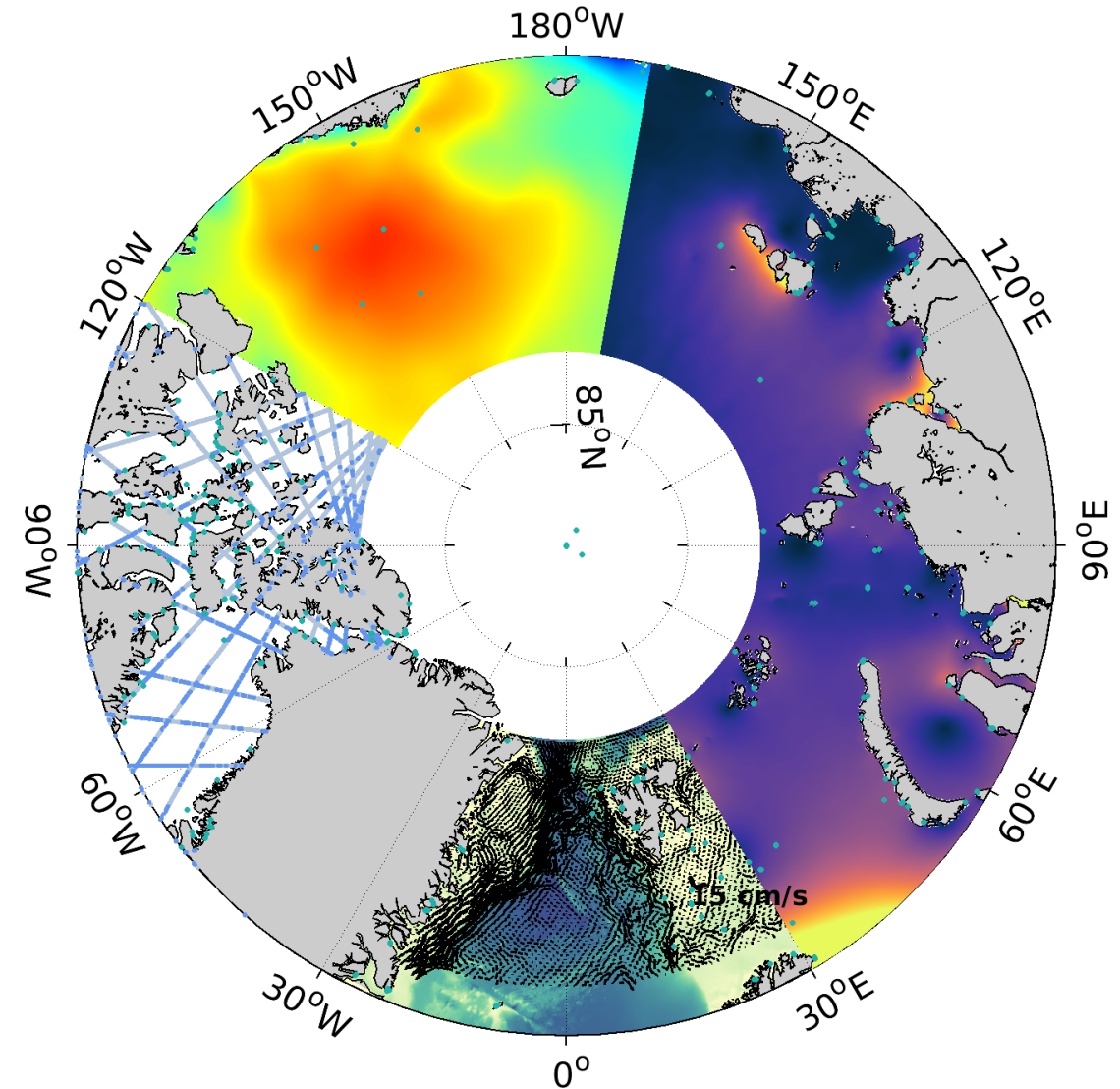
Cryo2ice Symposium 2024
Reykjavik, Iceland, 26.09.2024



Landsat-8 vs. CryoSat-2

Open water classification motivation

- Automatic detection of open water in the ice-covered ocean for the monitoring of:
 - Polar sea level
 - Polar ocean circulation
 - Spatial lead distribution
 - Sea-ice coverage
- Application of Machine Learning based algorithms
- Implementation of automatic radar waveform classifications for all satellite altimetry missions (ESA, CNES/NASA)
- Provision of improved and reliable altimetry sea surface heights
- Classification work published:
 - Müller et al., 2017: Envisat, SARAL
 - Passaro et al., 2018: CryoSat-2 (based on stack data)
 - Dettmering et al., 2018: CryoSat-2 (based on SAR wvf.)
 - Passaro et al., 2020: ERS-2, Jason-1,2,3, Sentinel-3A/B
 - Müller et al., 2023: CryoSat-2, Thin ice detection

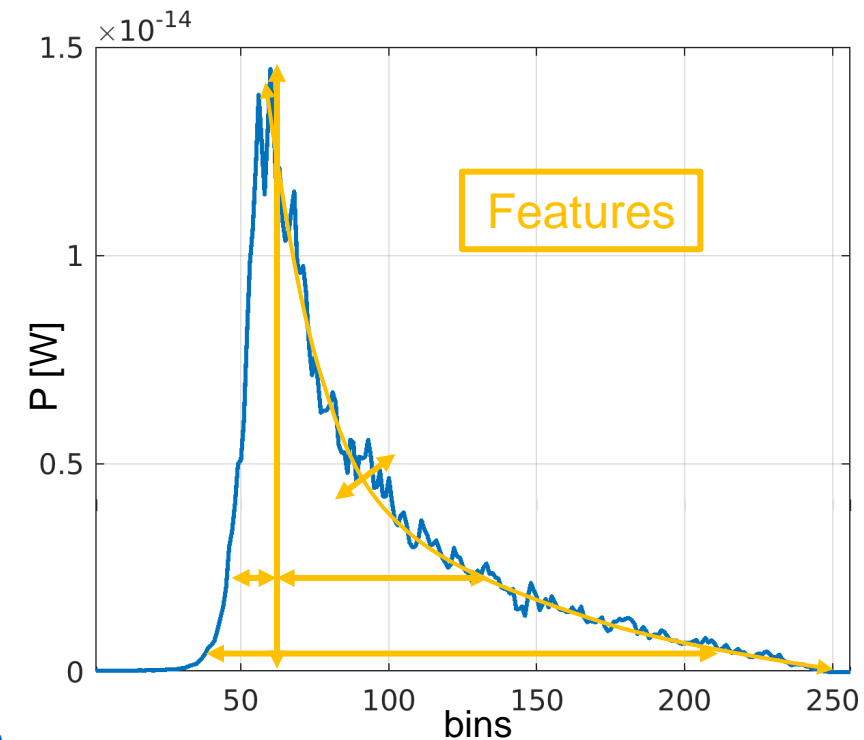
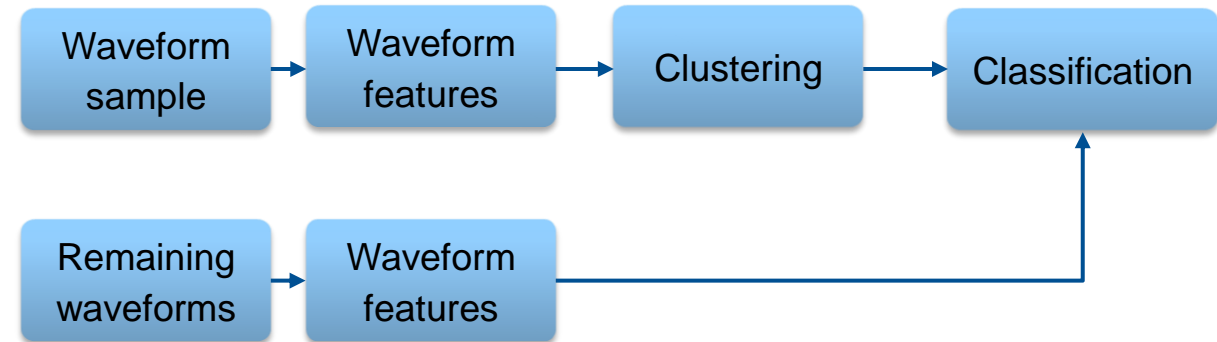


Unsupervised waveform classification

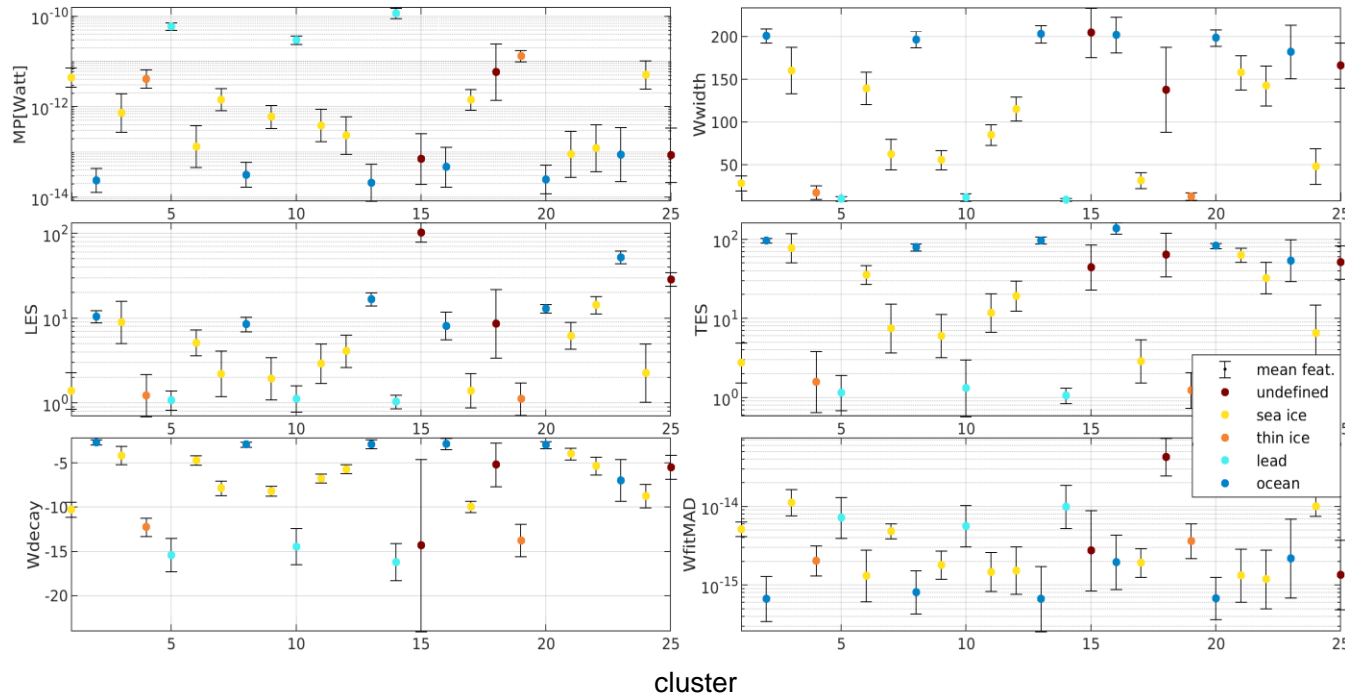
- Detection of water in leads and polynyas based on radar returns (waveforms)
- No training data needed (unsupervised learning)
- Identification of similarities among waveforms

1. Generation of waveform reference model using K-medoids clustering
2. Assignment of waveform clusters to surface conditions
3. Classification of remaining waveforms using reference model and K-nearest neighbor (K-NN)

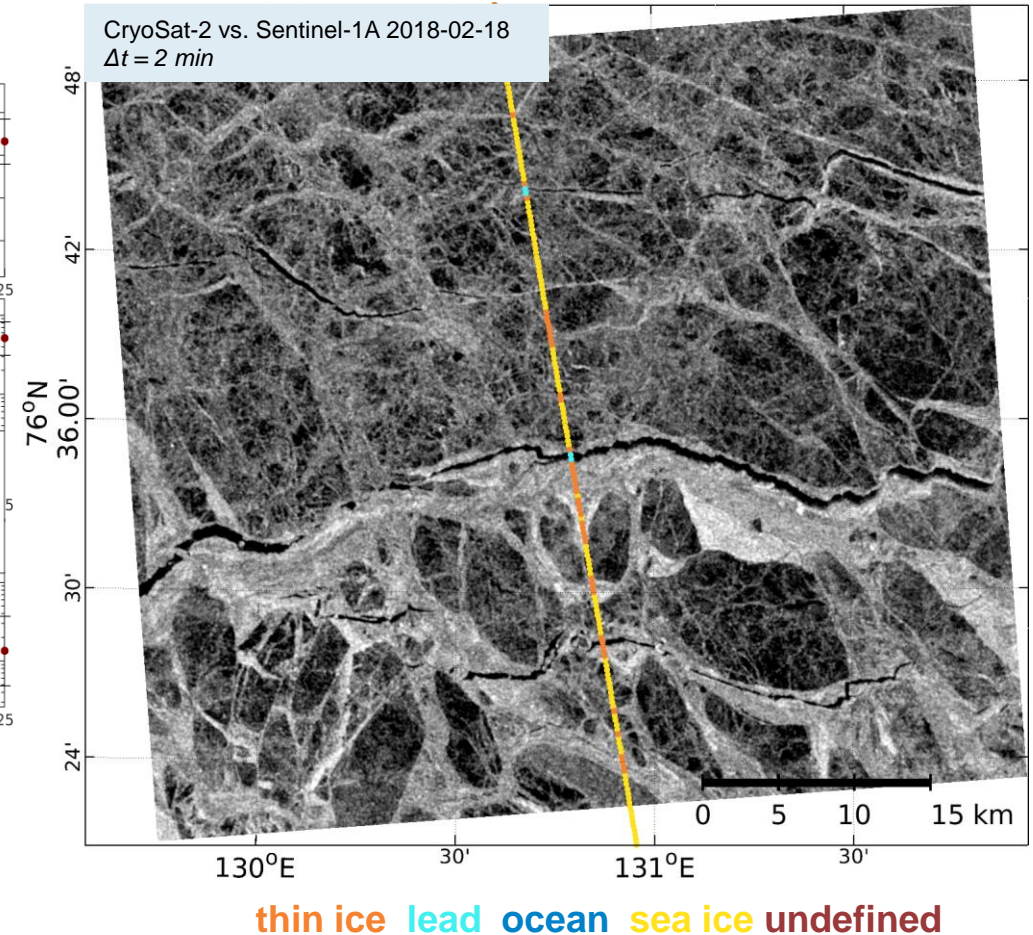
- Applicable to all altimeter missions
- More info in Müller et al., 2017



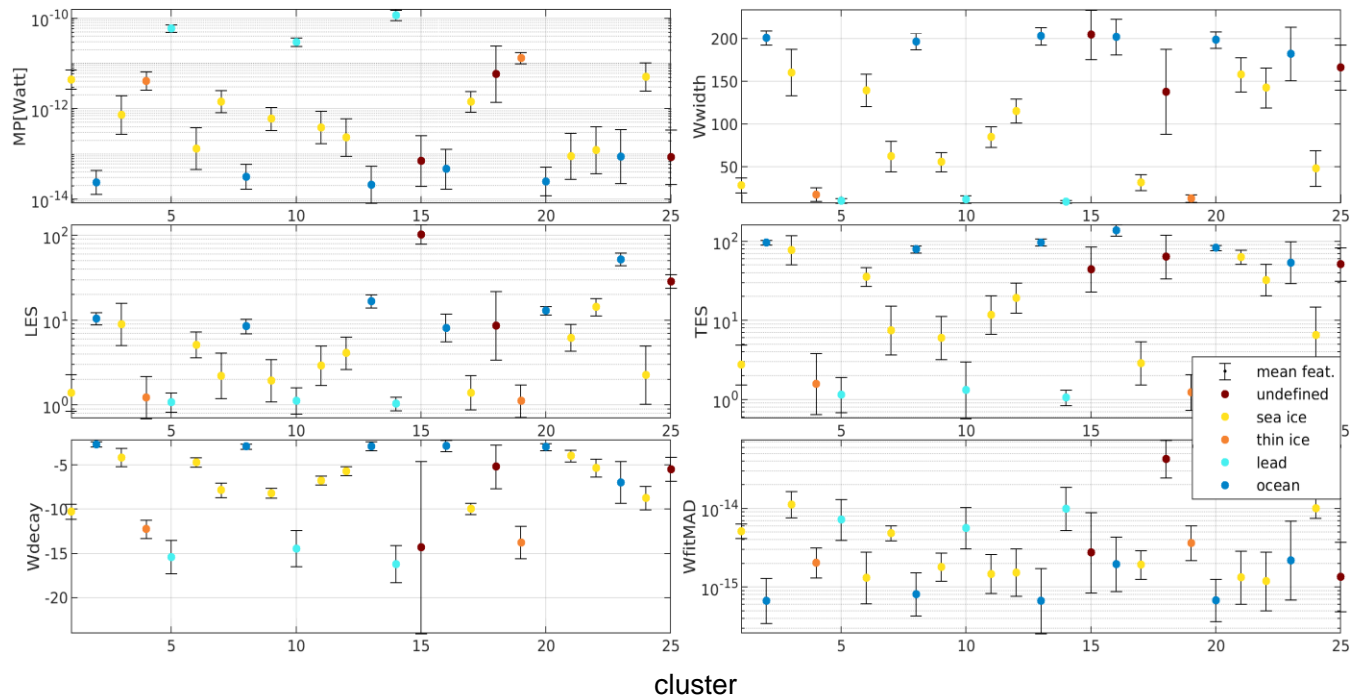
Unsupervised waveform classification + thin ice extension



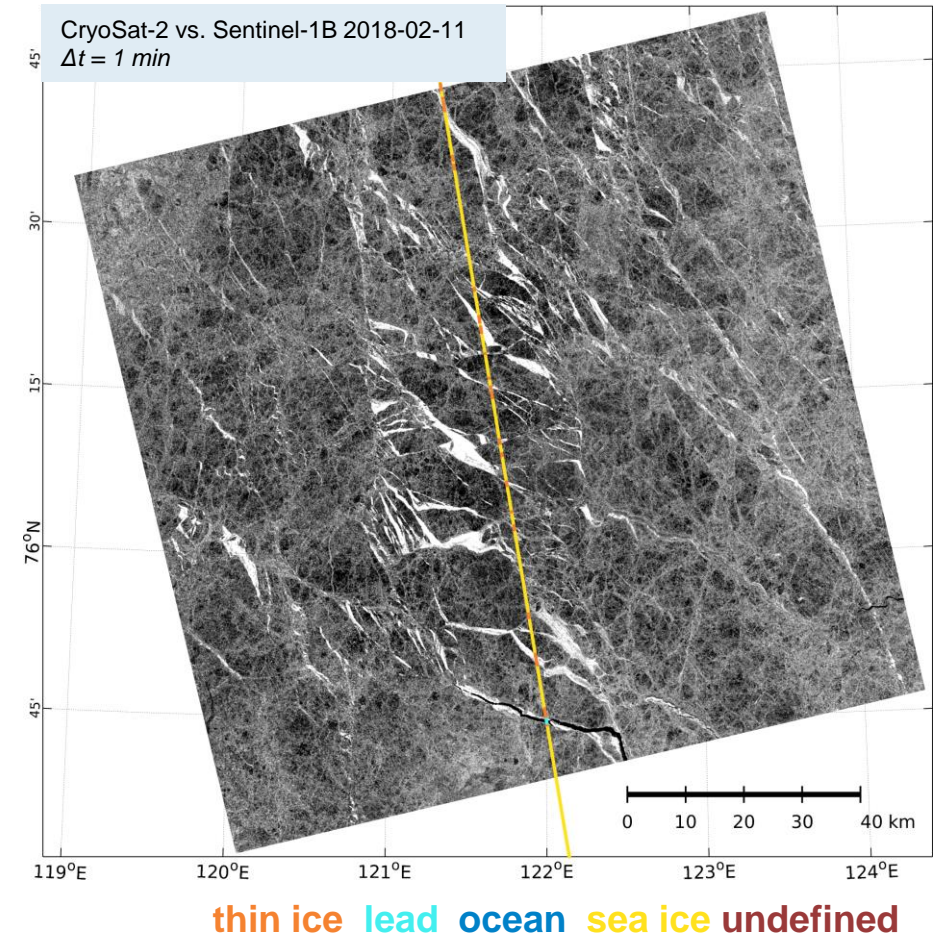
- Clusters are assigned to different surface types
- Extension of open water detection to thin ice surface types (e.g. refrozen leads)
- Comparison with thermal imagery-derived thin-ice thickness reveals strong linear relationships between features and thin-ice thickness



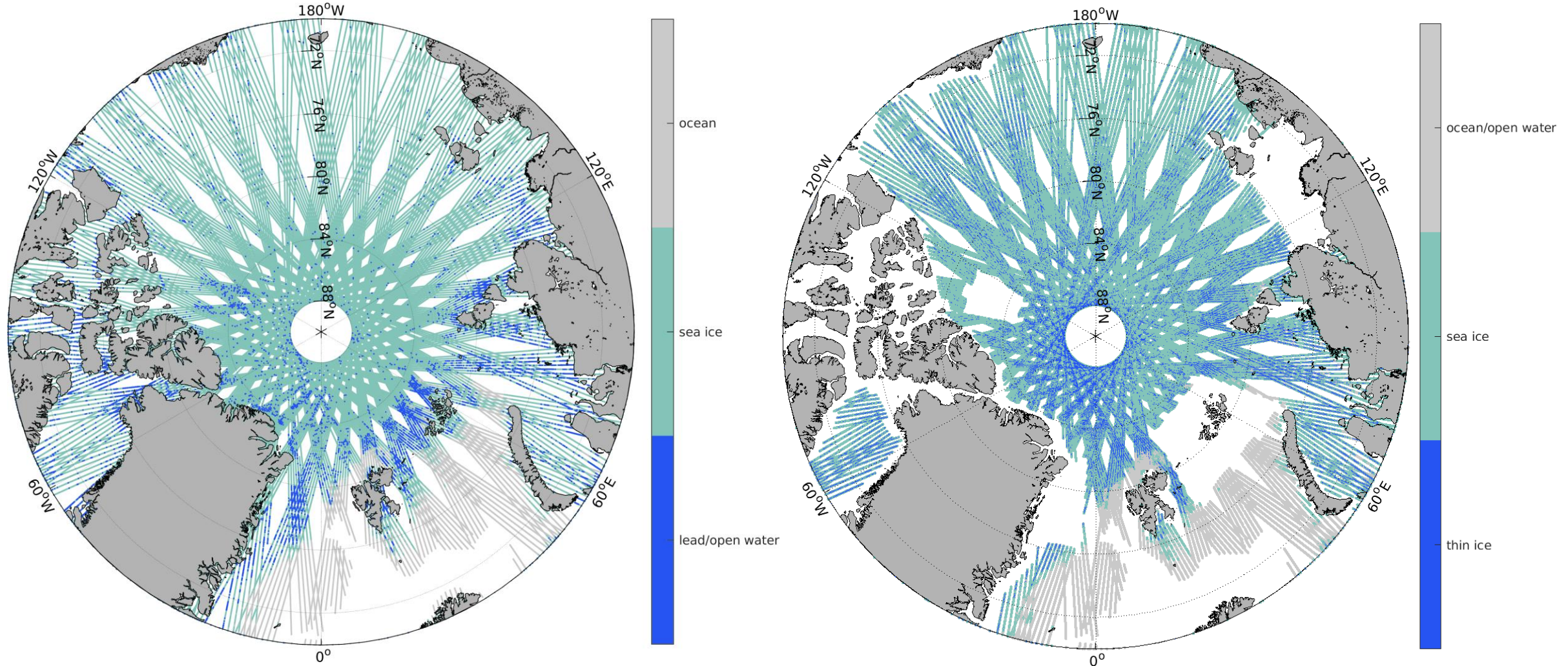
Unsupervised waveform classification + thin ice extension



- Clusters are assigned to different surface types
- Extension of open water detection to thin ice surface types (e.g. refrozen leads)
- Comparison with thermal imagery-derived thin-ice thickness reveals strong linear relationships between features and thin-ice thickness



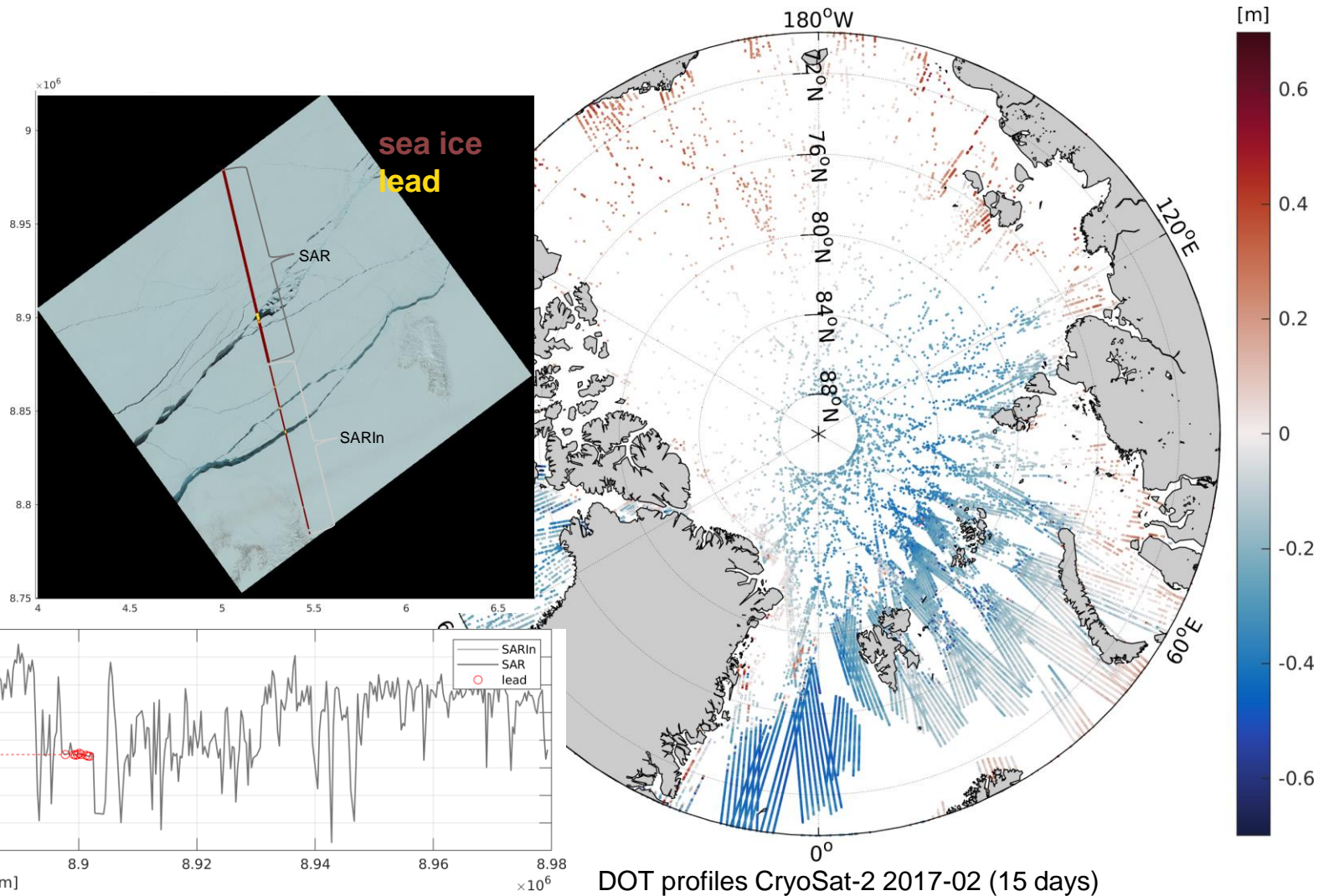
Unsupervised waveform classification + thin ice Extension



- Surface detections for Cryosat-2 (SAR + SARIn) for the first 15 days in February 2024
- Currently classification of thin ice only available for SAR mode

Unsupervised waveform classification

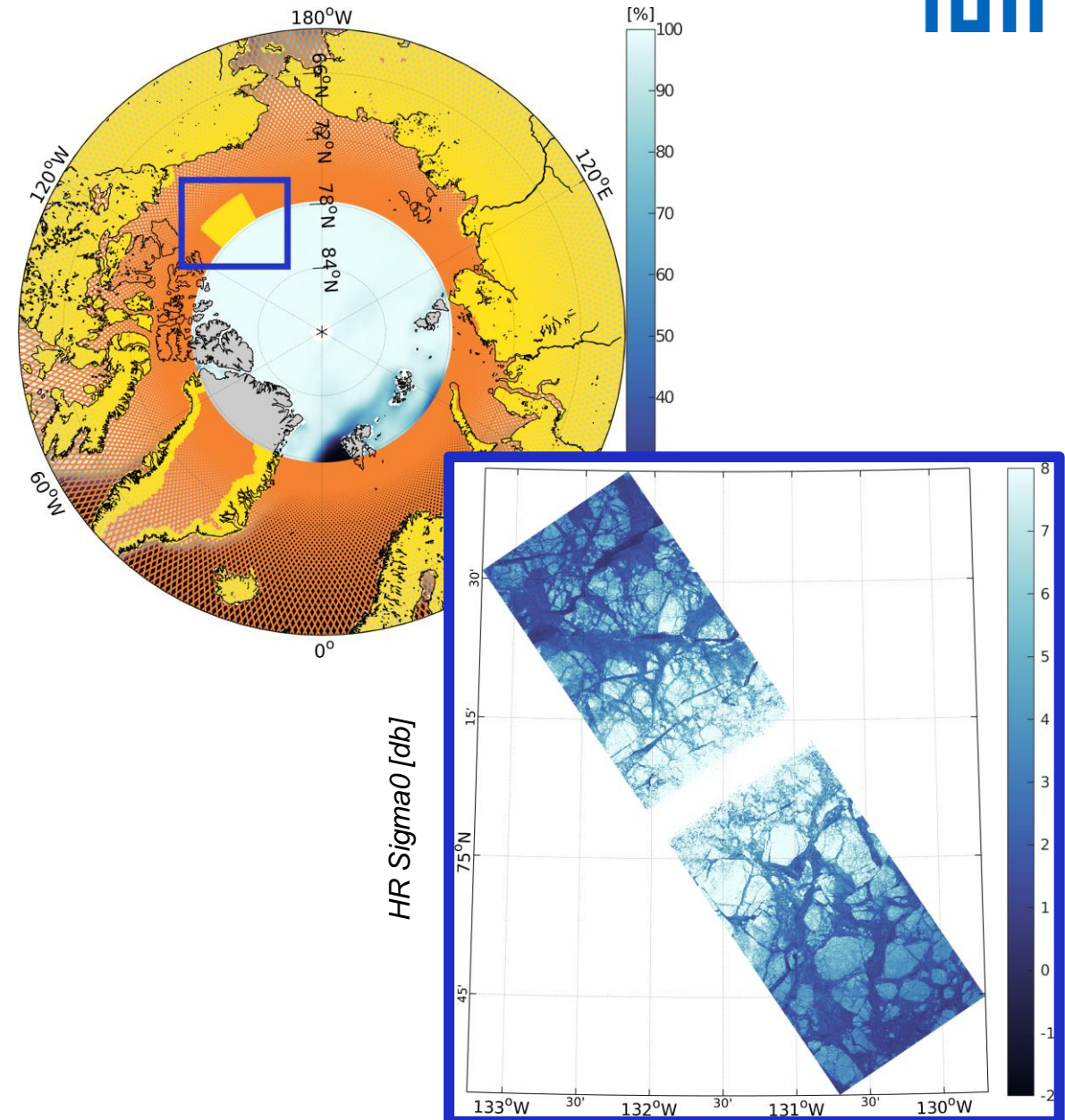
- Application of classification for polar sea level anomalies (SLA) or dynamic ocean topography (DOT) computation
- Usage of SAMOSA+ (Dinardo et al., 2018) or ALES+SAR (Passaro et al., 2022) retracker



SLA profile CryoSat-2 vs. Landsat-8 2015-04-25 ($\Delta t = 4$ std)

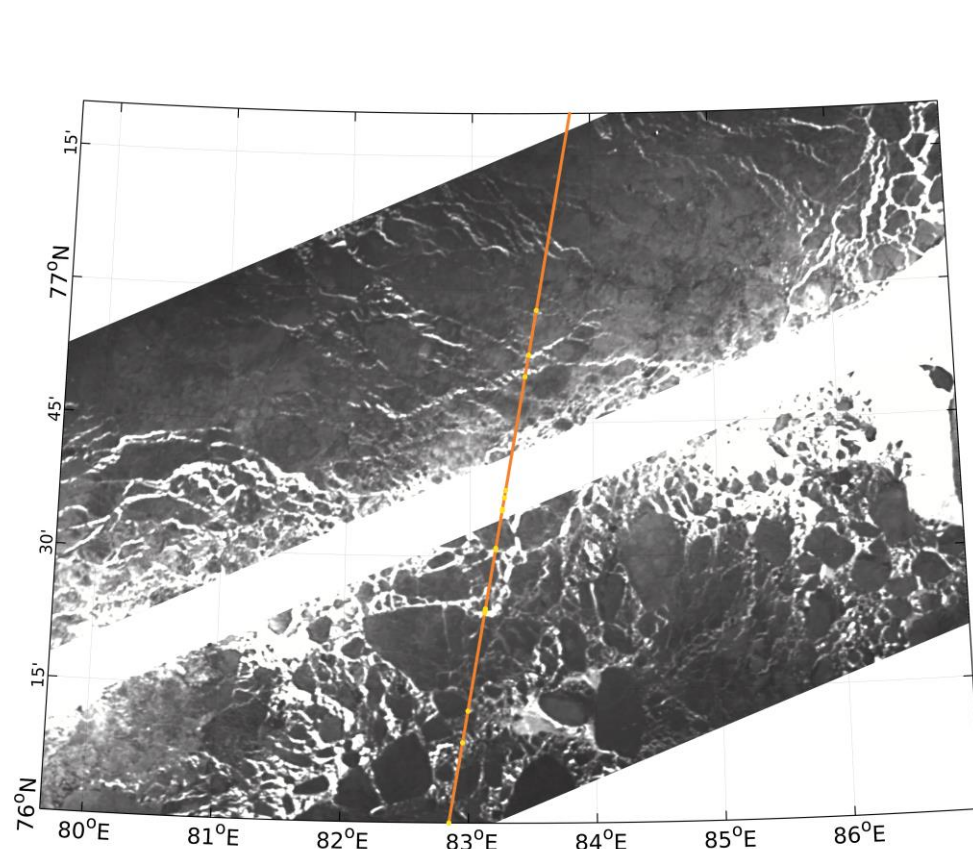
What comes next?

- Novel near nadir swath altimetry for ocean/sea ice related applications provided by SWOT
- Novel observation techniques by a KaRIn interferometer (swath altimetry)
- Launched in December 2022, different types of datasets (LR, HR) now available
- Spatial resolution ranging from 100 m to 250 m pixel posting
- Enables new insights in:
 - Sea ice and polar ocean dynamics (sea level, ocean currents, sea ice thickness, freeboard etc.)
 - Sea ice drift observations

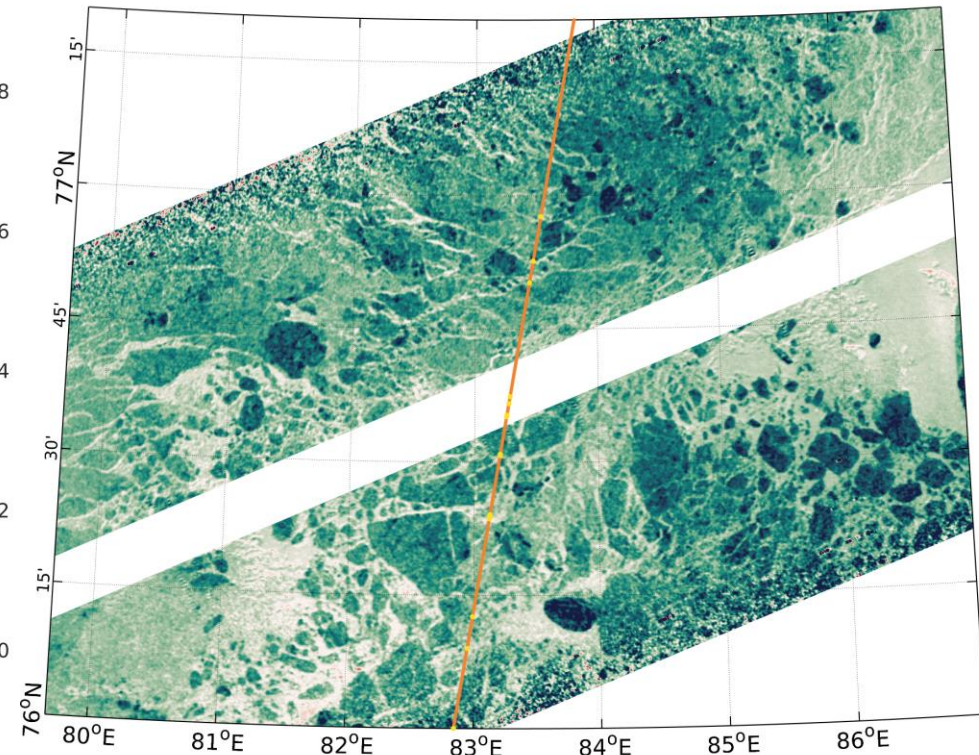
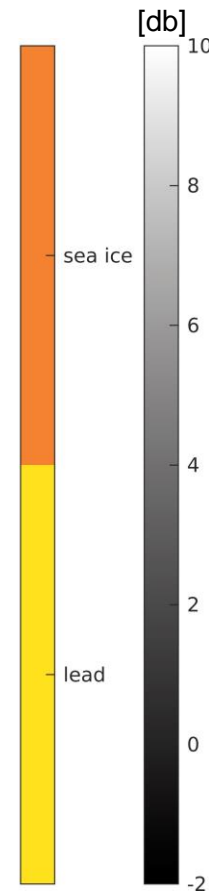


Comparison CryoSat-2 vs. SWOT

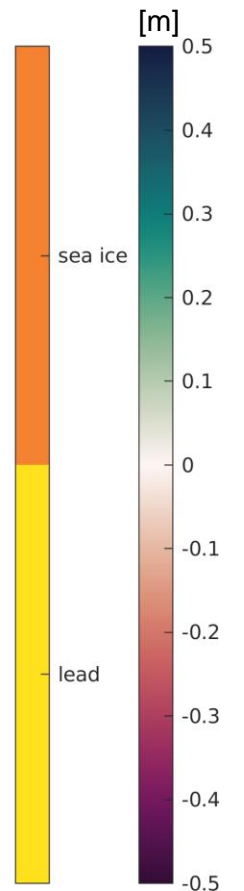
- Comparison of CryoSat-2 unsupervised classification with SWOT LR L2 Unsmoothed (250 m) within 30 minutes time gap



SWOT KaRIn backscatter

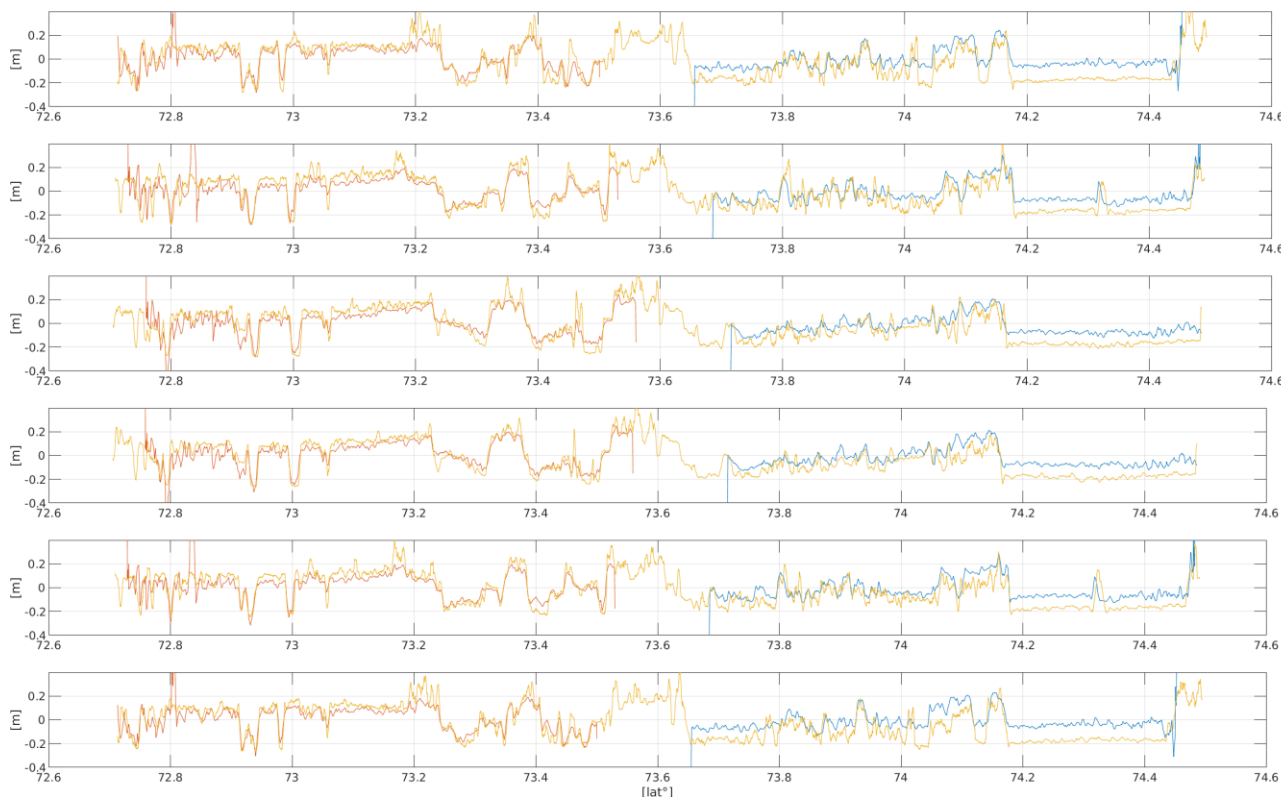


SWOT KaRIn sea level anomalies

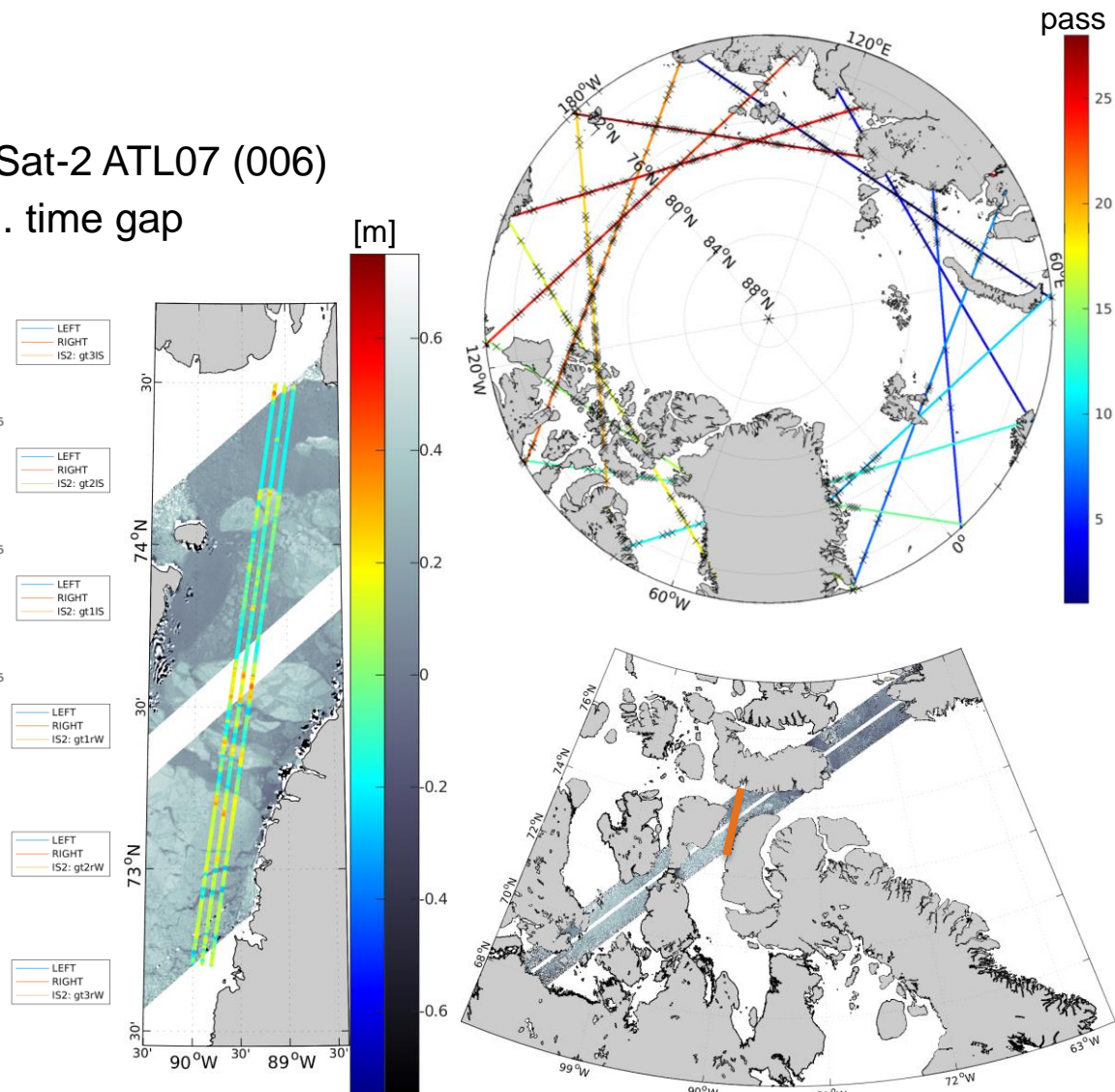


Comparison IceSat-2 vs. SWOT

- Comparison in terms of sea level anomalies (SSH-MSSH)
- Comparison of SWOT L2 LR Unsmoothed 2.0 (250 m) vs. IceSat-2 ATL07 (006)
- ~500 crossovers during SWOT CAL/VAL phase* within 30 min. time gap
- Interpolation of SWOT data to 6 IceSat-2 laser beams



2023-05-09, $\overline{\text{diff. std}} = 6.7 \text{ cm}$



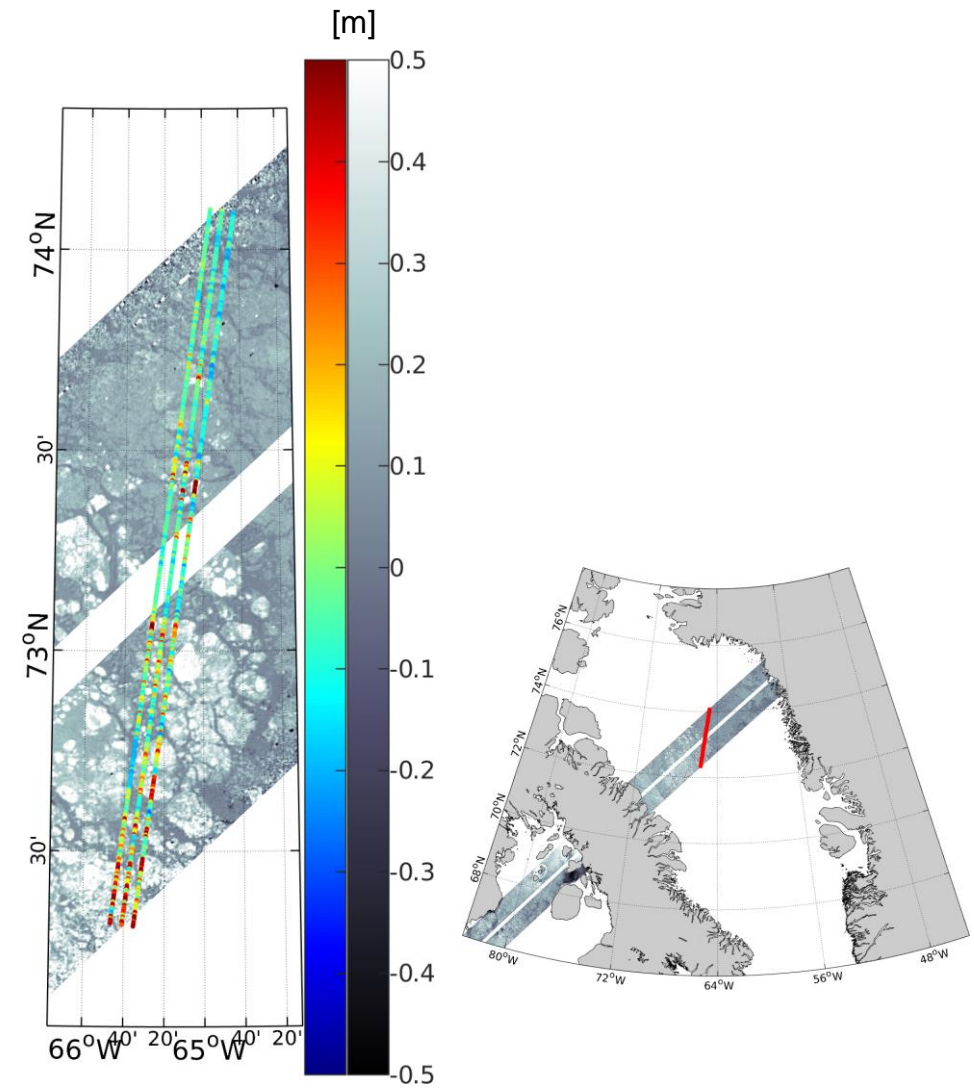
* cal/val from end-of March 2023 → mid July 2024 (1-day repeat orbit)

Comparison IceSat-2 vs. SWOT

- With focus on small leads comparison shows good agreement
- First point-wise analysis of 160 valid tracks (no strong outliers, >500 observations per overlap) reveal a standard dev. of **~ 9 cm**



2023-05-05, $\overline{\text{diff. std}} = 11 \text{ cm}$



Summary

- Unsupervised waveform classification enables a reliable detection of open water in the ice-covered ocean
- The unsupervised classification approach improves the computation of derived ocean variables (sea level, ocean currents)
- Thin ice extension opens a variety of possibilities for improving the determination of sea level and for the comprehensive investigation of sea ice development
- First analyses of SWOT pixel-based observations are promising for sea-ice/lead detection
- First comparisons with SWOT and ICESat-2 in terms of SLA show very promising results (small STD)
- Future work focuses on the computation of an improved Arctic sea level and the application of SWOT LR- and HR-mode data (SWOT Science Team)

References

Müller, F. L., Paul, S., Hendricks, S., and Dettmering, D.: *Monitoring Arctic thin ice: a comparison between CryoSat-2 SAR altimetry data and MODIS thermal-infrared imagery*, *The Cryosphere*, 17, 809–825, 2023.

Müller F.L., Dettmering D., Bosch W., Seitz F. *Monitoring the Arctic Seas: How Satellite Altimetry Can Be Used to Detect Open Water in Sea-Ice Regions*. *RS* 9(6), 551, doi: 10.3390/rs9060551, 2017

Dettmering, D., Wynne, A., Müller, F. L., Passaro, M., and Seitz, F.: *Lead Detection in Polar Oceans—A Comparison of Different Classification Methods for Cryosat-2 SAR Data*, *RS* 10, doi: 10.3390/rs10081190, 2, 2018

Dinardo S., Fenoglio, L., Buchhaupt C., Becker M., Scharroo R., Fernandes M. J., Benveniste, J., *Coastal SAR and PLRM altimetry in German Bight and West Baltic Sea*. *Advances in Space Research*. 62. <http://doi.org/10.1016/j.asr.2017.12.018>, 2018.

Passaro M., Rautiainen L., Dettmering D., Restano M., Hart-Davis M.G., Schlembach F., Särkkä J., Müller F. L., Schwatke C., Benveniste J.: *Validation of an Empirical Subwaveform Retracking Strategy for SAR Altimetry*. *Remote Sensing*, 14(16), 4122, 10.3390/rs14164122, 2022

Passaro M., Müller F.L., Dettmering D., *Baltic+ SEAL: Algorithm Theoretical Baseline Document (ATBD), Version 2.1*. Technical report delivered under the Baltic+ SEAL project. DOI: 10.5270/esa.BalticSEAL.ATBDV2.1., 2020

Passaro, M., Müller, F. L., & Dettmering, D. *Lead detection using Cryosat-2 delay-doppler processing and Sentinel-1 SAR images*. *Advances in Space Research: The Official Journal of the Committee on Space Research (COSPAR)*, 62(6), 1610–1625. doi:10.1016/j.asr.2017.07.011, 2018