

# Dubrovnik Airport Ltd.

ACI RACE

2024

Dubrovnik, Croatia





Hungary



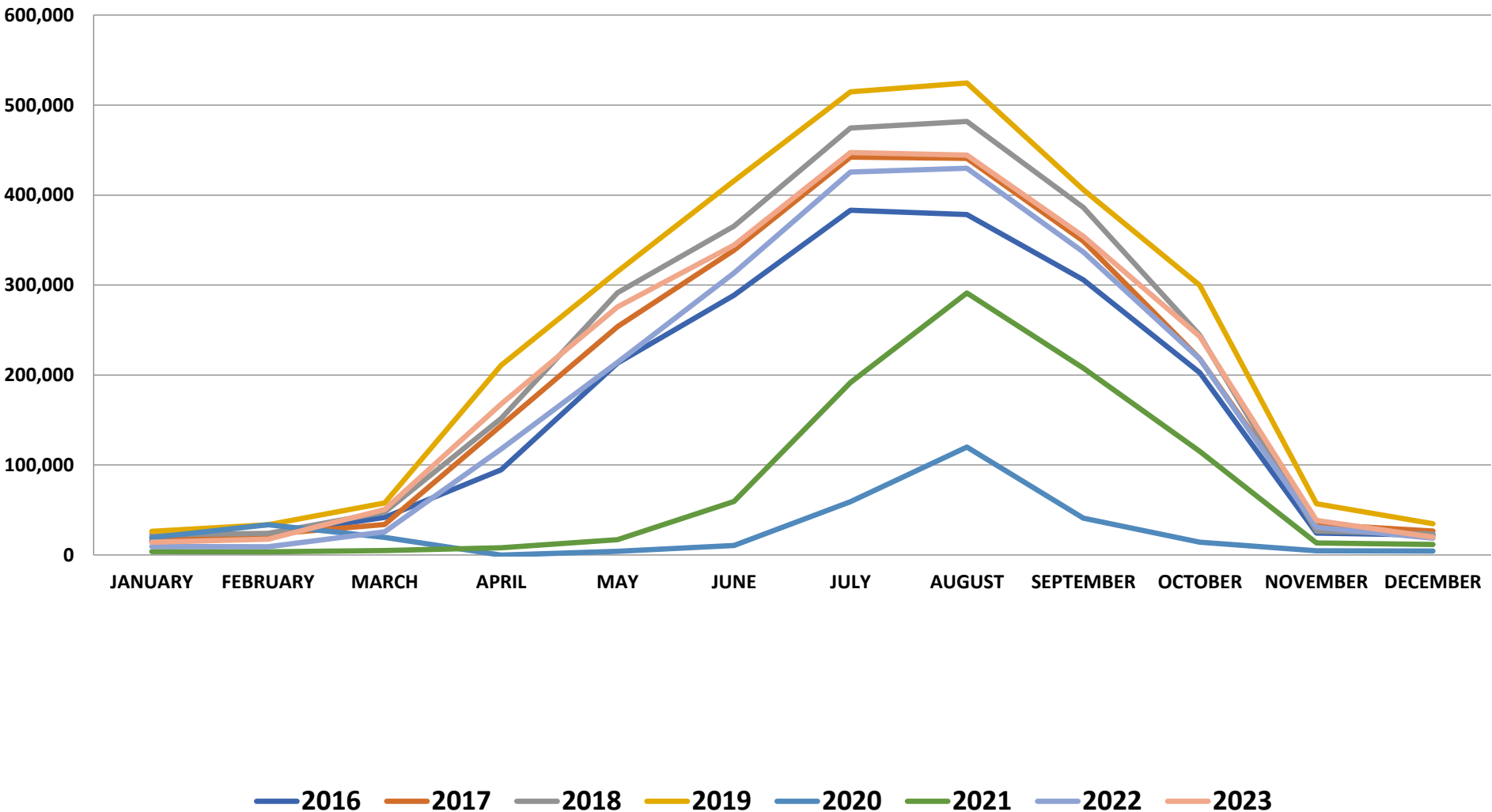
3

Slovenia

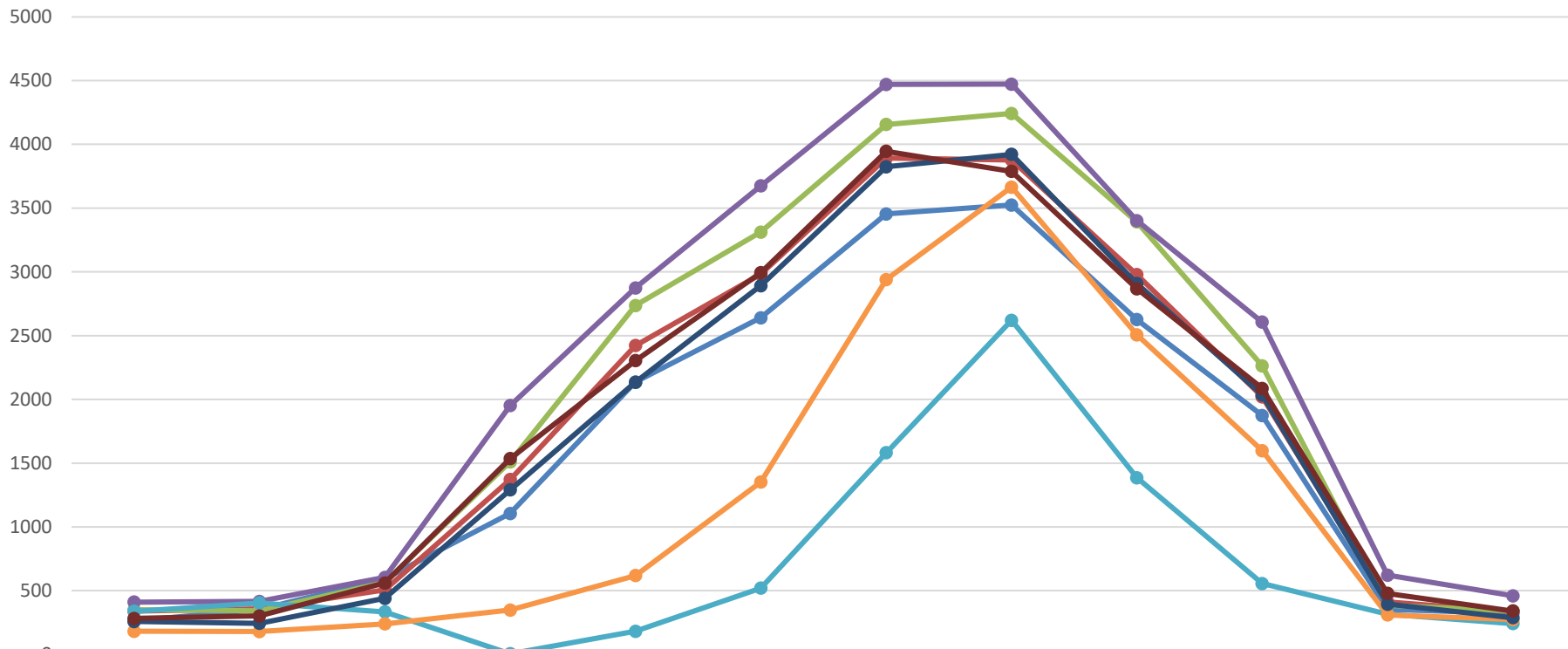
Bosnia and Herzegovina

Montenegro

# Number of Passengers 2016 - 2023



# Number of Operations 2016 - 2023

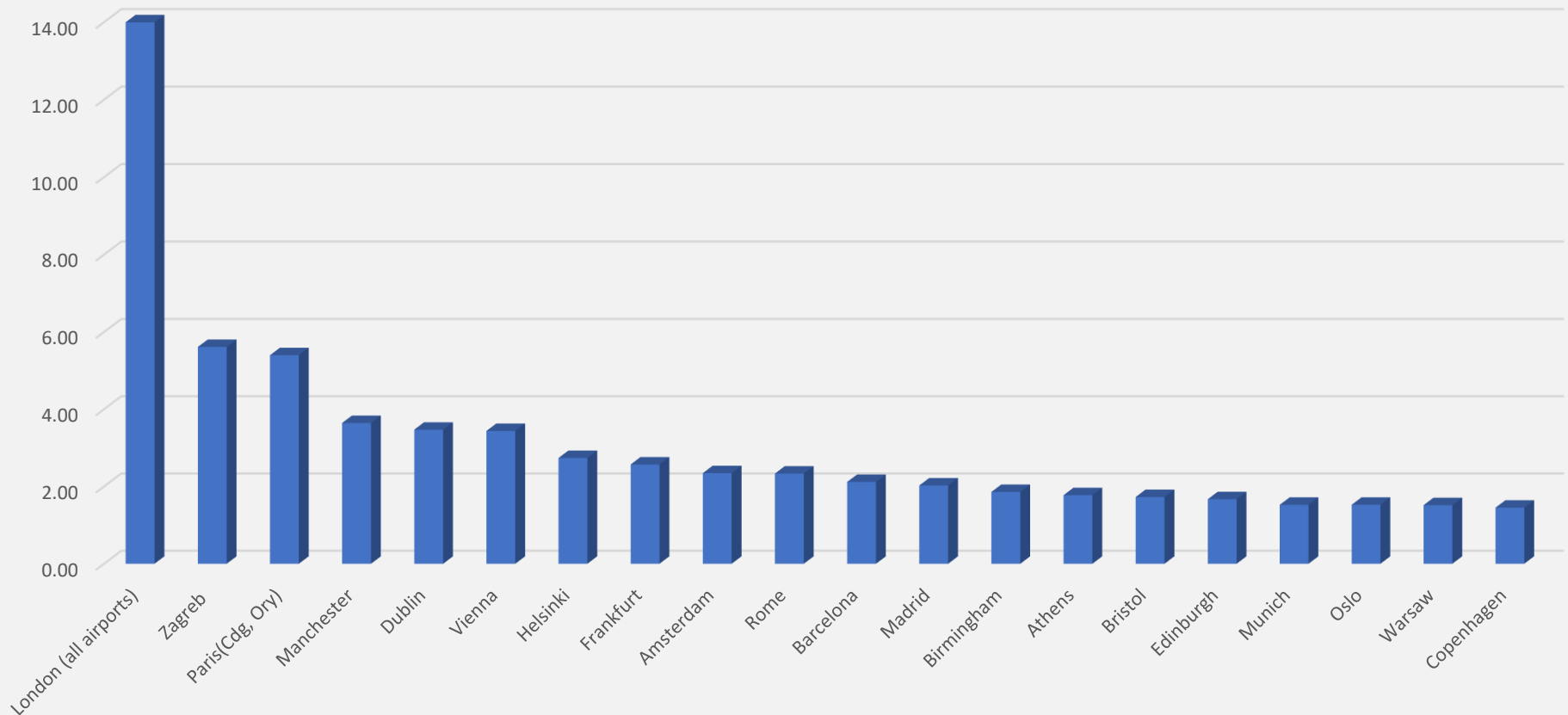


	January	February	March	April	May	June	July	August	September	October	November	December
2016	264	352	594	1,106	2,136	2,640	3,454	3,524	2,626	1,874	352	322
2017	340	358	506	1,372	2,422	2,982	3,892	3,878	2,978	2,020	412	336
2018	350	342	566	1,510	2,736	3,312	4,156	4,242	3,392	2,264	386	340
2019	410	416	604	1,952	2,874	3,674	4,470	4,472	3,402	2,606	622	460
2020	338	404	334	6	182	520	1,582	2,620	1,386	556	316	242
2021	182	180	240	348	618	1,352	2,940	3,664	2,506	1,598	310	274
2022	258	244	440	1,290	2,134	2,892	3,824	3,922	2,908	2,036	394	288
2023	282	302	560	1,536	2,304	2,994	3,946	3,788	2,868	2,086	478	340

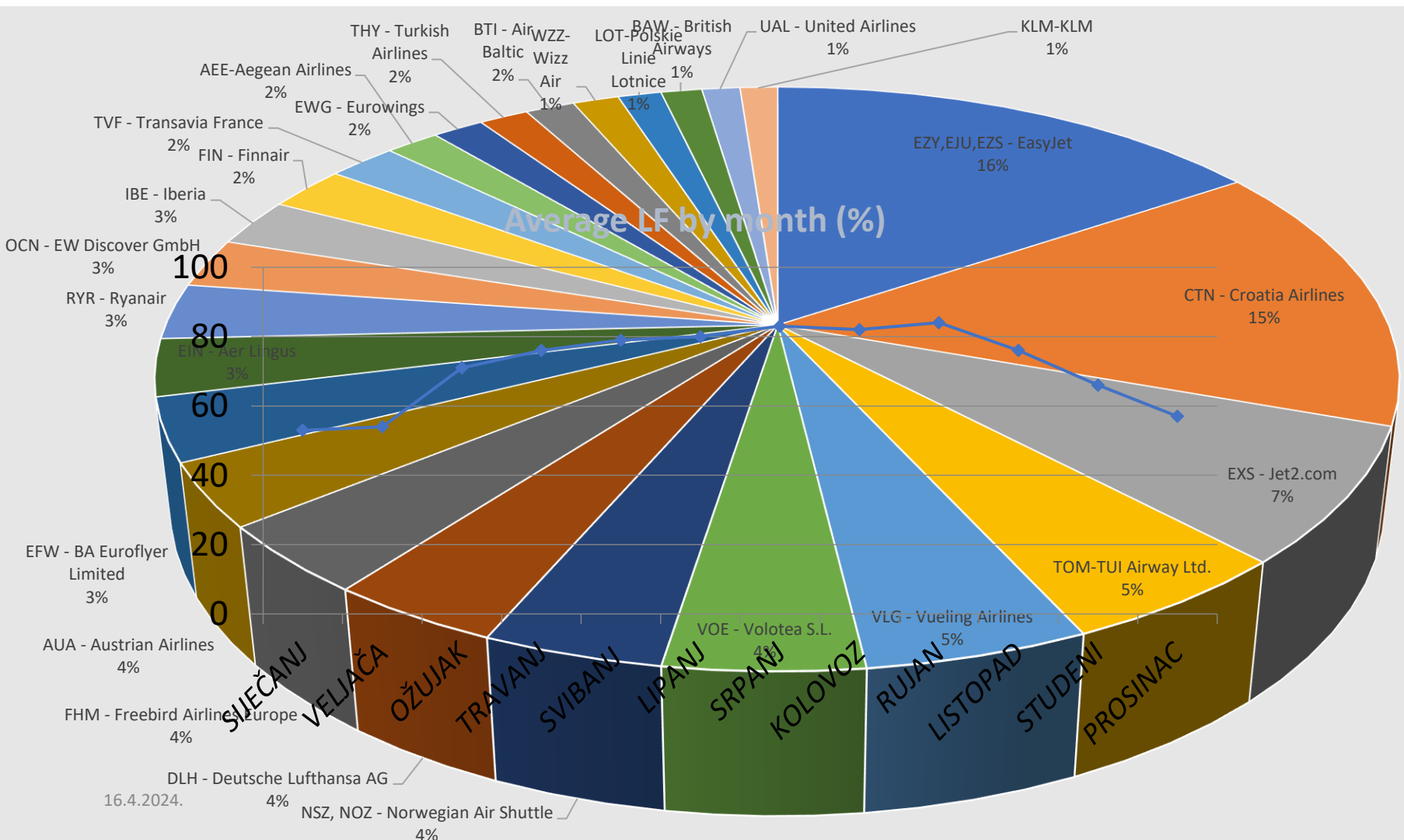
# Main Markets 2023

- 93,14% of the total number of passenger traffic is toward 20 Countries
- 62,75% of the total number of passenger traffic is toward 20 towns – destinations

Passengers by Destination



# Airlines – market share 2023



16.4.2024.

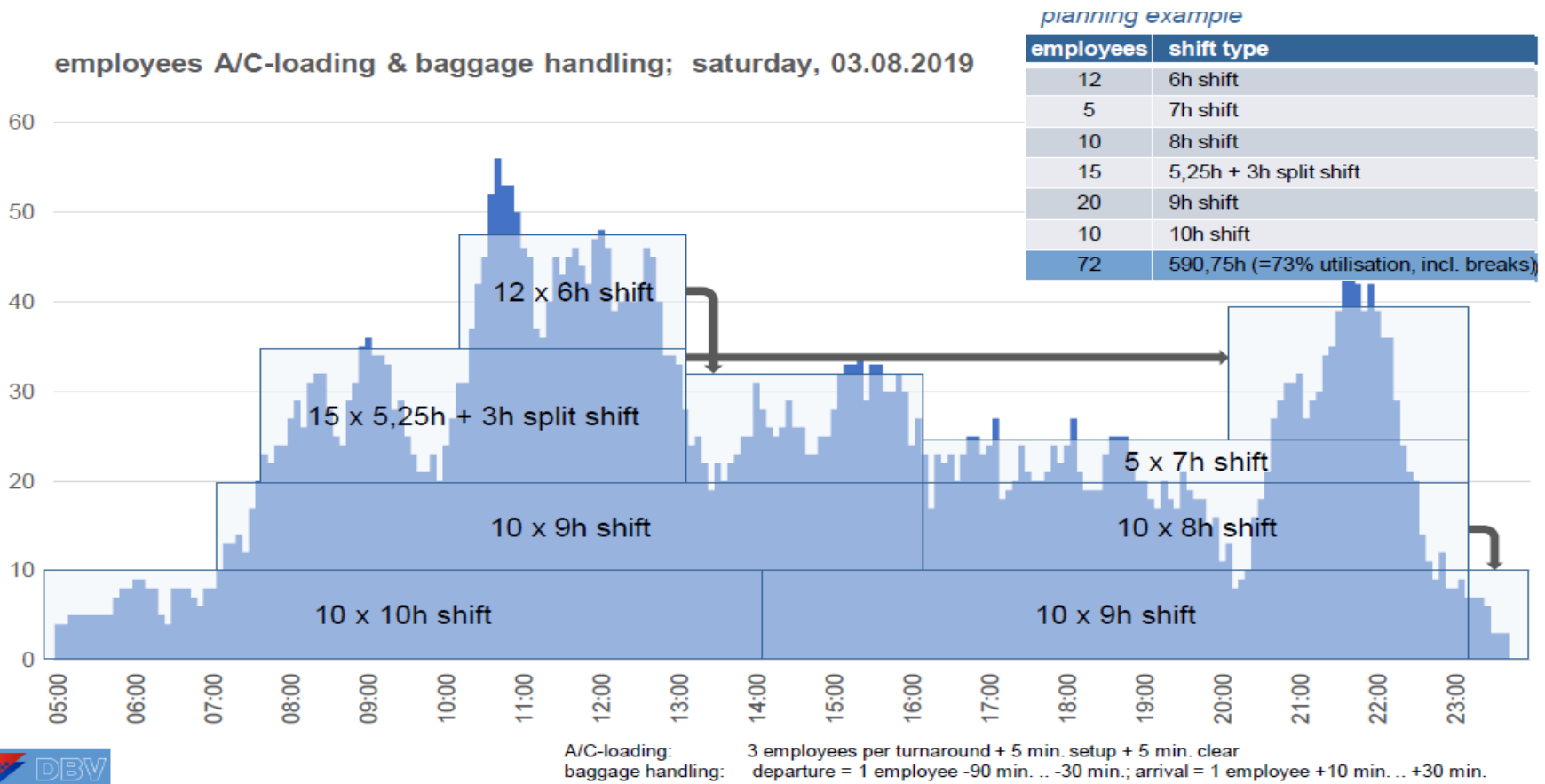
# Capacity and constraints @DBV



Dubrovnik Airport Ltd.		Terminal (buildings ABC)				
sector	dwelt time	factor	capacity	utilization	IATA standard	
<b>1. Landside departure</b>			1135 m2			
1a Check-in queue area	20 min	0,333	775 m2	2,39 m2/pax	OK	
1b Security control queue area	10 min	0,167	360 m2	2,22 m2/pax	OK	
<b>2. Airside departure</b>			3711 m2			
<b>2.1 Schengen area</b>			2048 m2			
2.1a Gate area - surface in front of boarding desk	10 min	0,167	409,6 m2	2,53 m2/pax	OK	
2.1b Gate area - waiting area with included passenger seats	60 min	1,000	1638 m2	1,69 m2/pax	OK	
<b>2.2 Non - Schengen area 0</b>			1663 m2			
2.2a Gate area - surface in front of boarding desk	10 min	0,167	332,6 m2	3,08 m2/pax	OK	
2.2b Gate area - waiting area with included passenger seats	50 min	0,833	1330 m2	2,46 m2/pax	OK	
<b>3. Baggage reclaim</b>			1338 m2			
3a Retrieval and peripheral area	25 min	0,417	802,8 m2	1,70 m2/pax	OK	
3b Wait and circulate area (with carts)	15 min	0,250	535,2 m2	1,89 m2/pax	OK	
<b>4. Arrivals</b>						
4a Schengen arrivals	10 min	0,167	290 m2	1,53 m2/pax	OK	
4b Non-Schengen arrivals B	60 min	1,000	270 m2	1,39 m2/pax	NOT OK	
4b Non-Schengen arrivals C	60 min	1,000	579 m2	1,28 m2/pax	NOT OK	
SCH Passengers DEP:	<b>972</b>	Operations - peak time activity:			<b>6</b>	
Non-SCH Passengers ARR or DEP:	<b>648</b>	Operations - peak time activity:			<b>4</b>	
SCH Passengers ARR:	<b>1134</b>	Operations - peak time activity:			<b>7</b>	



# Challenges of seasonality and DBV experience



**THANK YOU**