



8TH
INTERNATIONAL
WILDLAND FIRE
CONFERENCE

GOVERNANCE
PRINCIPLES:
Towards an
International
Framework

What can we learn from community-based wildfire initiatives?

A case for more situated approaches towards Living with



Universitat
Oberta
de Catalunya

Wildfire
Isabeau Ottolini

PhD Candidate

E-mail:

iottolini@uoc.edu

Twitter:

[@IsabeauOttolini](https://twitter.com/IsabeauOttolini)



The PyroLife project has received funding from the European Union's Horizon 2020 Research and Innovation Programme MSCA-ITN-2019 – Innovative Training Networks under grant agreement N° 860787



Today's program:

1. Introduction
2. Wildfires & Communication
3. Insights from a Community-based Wildfire initiative
4. Conclusions

Core question

How can community-based wildfire initiatives contribute to, and transform,
Wildfire Communication practices and knowledge?



Core question

How can community-based wildfire initiatives contribute to, and transform,
Wildfire Communication practices and knowledge?

Methodology

- Literature review on wildfire (risk) communication
- Interviews with wildfire communication practitioners & scientists
- In-depth case study with a citizen association in Spain



Wildfire Risk Communication

Some examples →



Cal Fire, 2020 (USA)



National Fire Chiefs Council, 2020 (UK)



Brandweer, 2020 (Netherlands)



NSW Rural Fire Service, 2020 (Australia)



Generalitat Valenciana, 2020 (Spain)



Get Ready Queensland, 2020 (Australia)



CONAF, 2022 (Chile)



Western Cape Government, 2022 (South Africa)



AGIF, 2022 (Portugal)



Greenpeace Spain (2020)

Wildfire Risk Communication

- Aim: change citizen's behaviour for risk prevention & preparedness
- Approach: technocratic
“specialized knowledge delivered by experts to the public” to “nudge exposed populations”
- Citizens: isolated, unknowledgeable individuals at wildfire risk



[Cal Fire](#), 2020 (USA)



[National Fire Chiefs Council](#), 2020 (UK)



[Brandweer](#), 2020 (Netherlands)



[NSW Rural Fire Service](#), 2020 (Australia)



[Generalitat Valenciana](#), 2020 (Spain)



[Get Ready Queensland](#), 2020 (Australia)



[CONAF](#), 2022 (Chile)



[Western Cape Government](#), 2022 (South Africa)



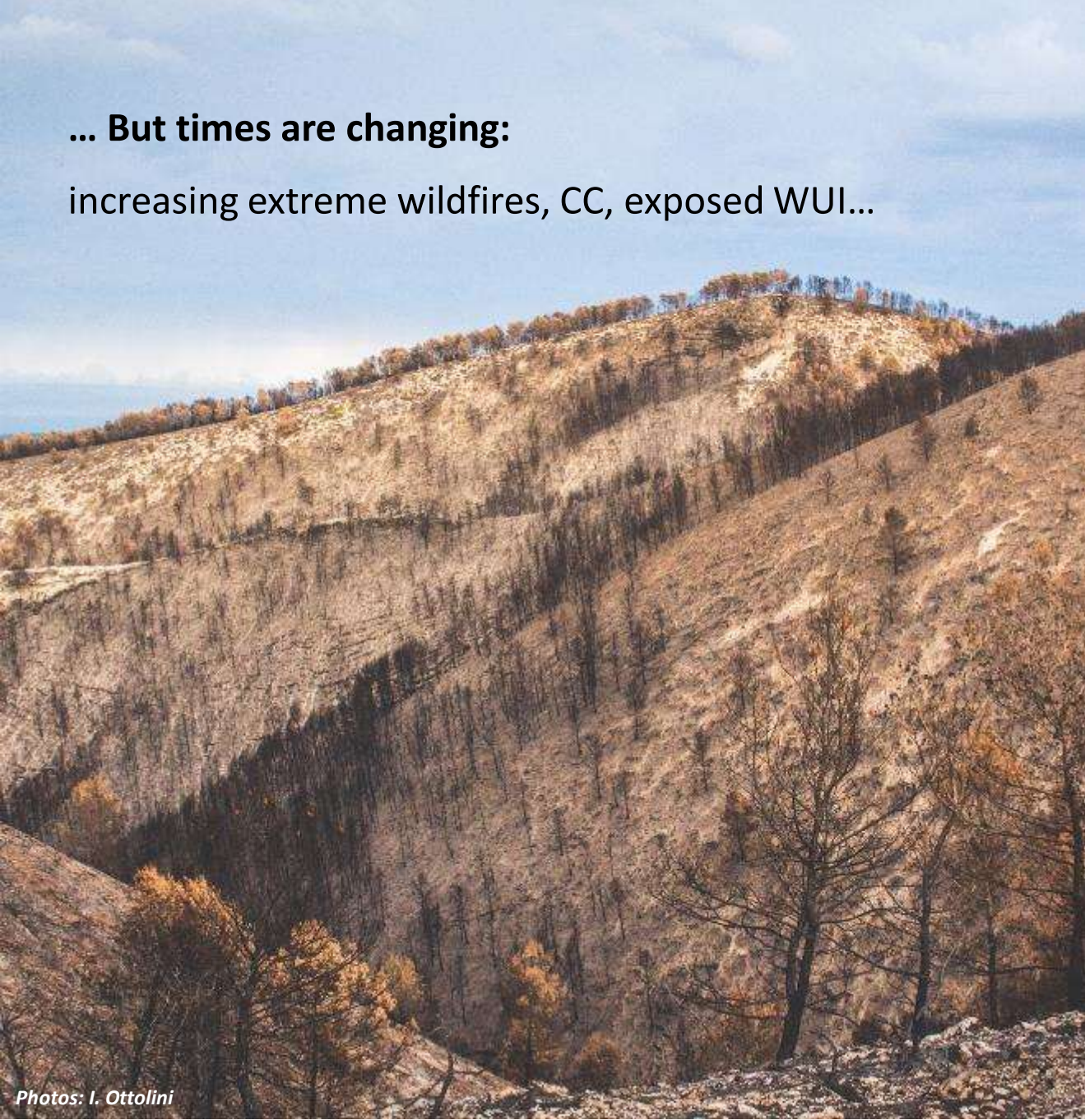
[AGIF](#), 2022 (Portugal)



[Greenpeace Spain](#) (2020)

... But times are changing:

increasing extreme wildfires, CC, exposed WUI...



#STOPALFOC

Limitations (I)

- Top-down, expert-driven, unidirectional
- Generic & simple messages on RISK

**LA TEUA ACTITUD
POT MARCAR LA DIFERÈNCIA**

Evita que una distracció es convertisca en un incendi



TOTS
A UNA
veu



Limitations (II)

- Problematic framings:
 - Disasters = events
 - Wildfires = *natural* disasters
 - Individual responsibility





Consequences:

- Insufficient recognising & addressing **underlying** and **long-term processes** leading up to wildfires
- Overlooks other wildfire dimensions beyond **risk**
- Not embedded within **local contexts**
- **Excludes** voices, knowledge & expertise of ‘non-experts’



Consequences:

- Insufficient recognising & addressing **underlying** and **long-term processes** leading up to wildfires
- Overlooks other wildfire dimensions beyond **risk**
- Not embedded within **local contexts**
- **Excludes** voices, knowledge & expertise of 'non-experts'

In response: **emergence of community-based initiatives**



Consequences:

- Insufficient recognising & addressing **underlying** and **long-term processes** leading up to wildfires
- Overlooks other wildfire dimensions beyond **risk**
- Not embedded within **local contexts**
- **Excludes** voices, knowledge & expertise of 'non-experts'

In response: **emergence of community-based initiatives**

e.g:





Case study background

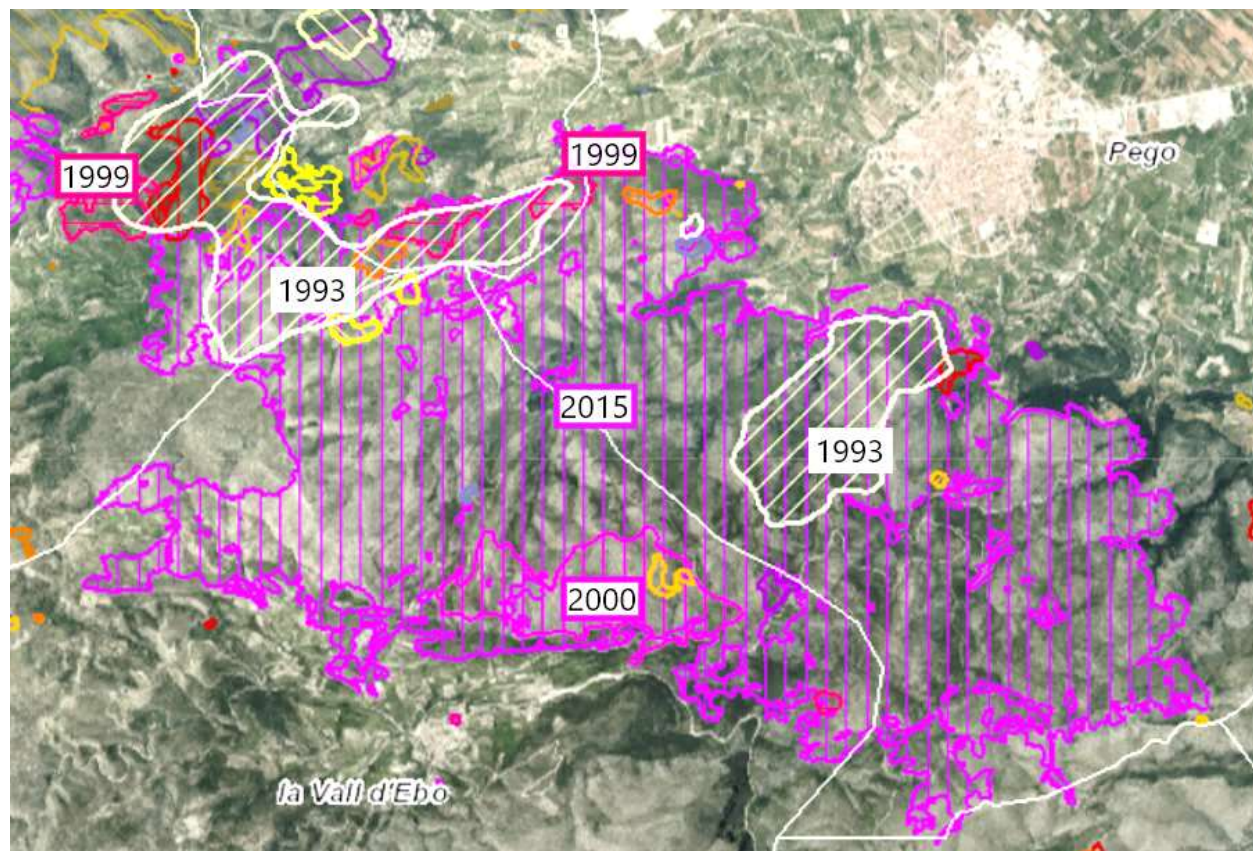
- *Location:* Pego, Southeast Spain





Case study background

- *A fire landscape: many recurrent wildfires*





Case study background

- *2015 Vall d'Ebo wildfire*: catalyst for creating the citizen initiative





Case study background

- *Activities:* land stewardship, advocacy, education...linked to wildfires and beyond (e.g. local traditional knowledge, sustainability...)

El Incendio de Pego y sus valles 

El día 14 de Agosto por la tarde comenzó un tipo de tormenta eléctrica, uno de esos rayos cayó sobre un árbol y se incendió.
 Por la noche comenzó a llover cenizas.
 La luna estaba roja.
 Se veían las llamas detrás de las montañas.
 Al día siguiente por el medio día desalojaron algunos pueblos.
 Todos se fueron al Espai Vínat de Pego.
 Todos los días les traían comida de bares y restaurantes que se ofrecían a cocinar para ellos y ellas.
 Algunos se quedaban allí a dormir en casas que preparaban los Brós Rojos y otros dormían en casas de familiares o amigos.
 Entusiasmados como, la noche del quinto día por la noche comenzó a llover y cuando a esa lluvia se dio la noticia que ya se podía subir a los pueblos.
 Todos los días que la televisión y los noticieros.
 Me sentía con mucho miedo y un poco asustada.



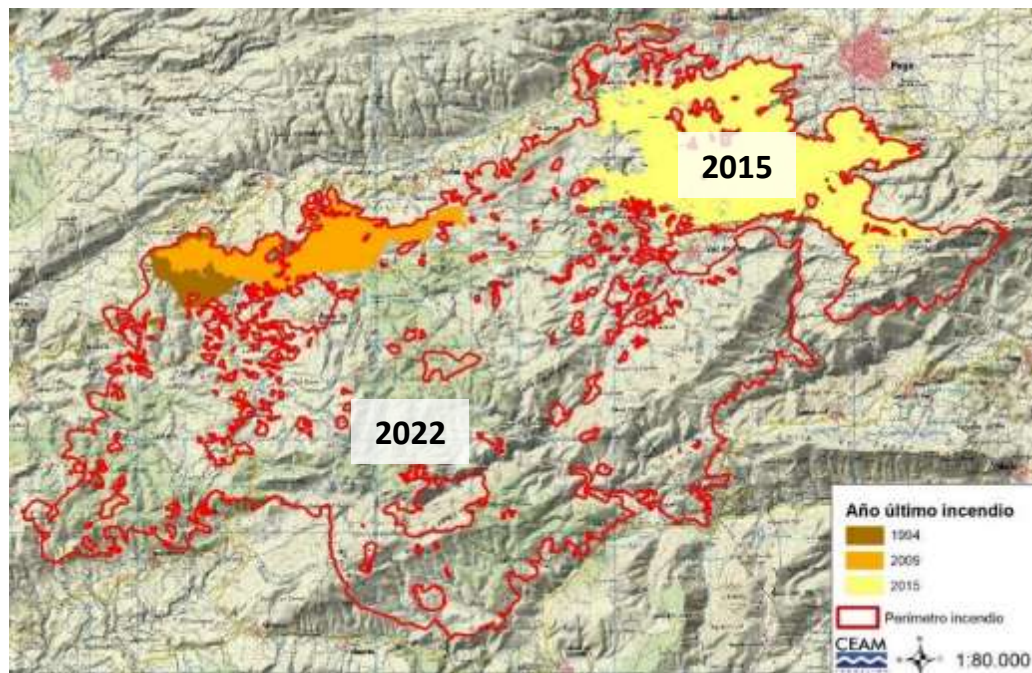
© Isabele Ottolini





Case study background

- *2022 wildfire*. Big socioenvironmental impact... but also a catalyst for:
 - Further consolidation of Pego Viu as a community-based initiative
 - New / increased collaborations, projects & activities (+ volunteers, knowledges, expertise...)



Case study background – communication during and after the 2022 wildfire



2022 Vall d'Ebo Wildfire

13 August

...

27 August

- **Emergency communication**
(where's the fire, evacuations, offering/ asking help...)
- **'Reflective' communication**
(why 2 big wildfires in 7 years? root causes wildfire, how to prevent future disasters...)

Case study background – communication during and after the 2022 wildfire



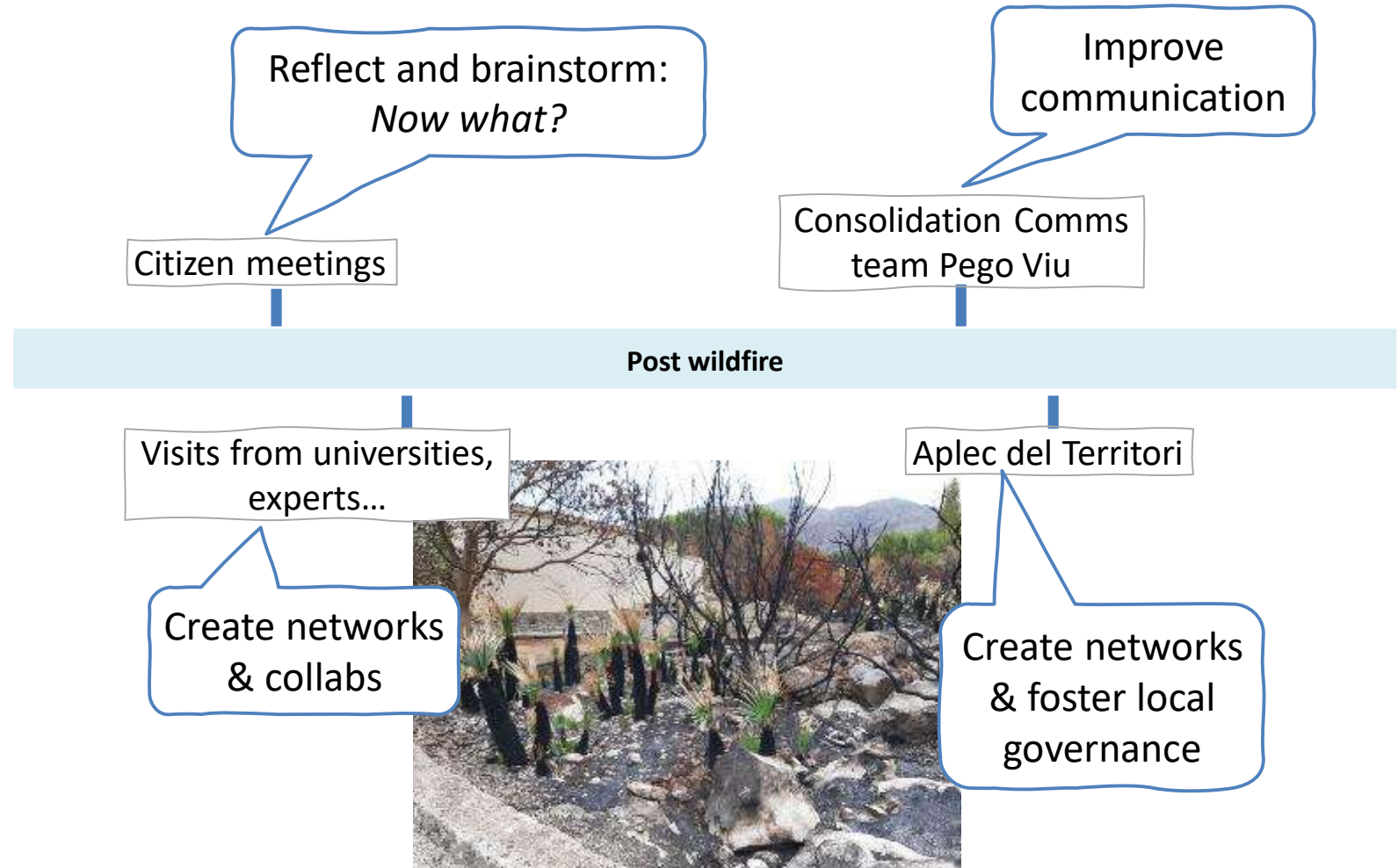
2022 Vall d'Ebo Wildfire

13 August

...

27 August

- **Emergency communication** (where's the fire, evacuations, offering/ asking help...)
- **'Reflective' communication** (why 2 big wildfires in 7 years? root causes wildfire, how to prevent future disasters...)





What can we learn from these
**community-based wildfire
initiatives** on communicating
about wildfires?

Going **beyond**
wildfire RISK

Wildfire Risk
Communication



Wildfire
Communication

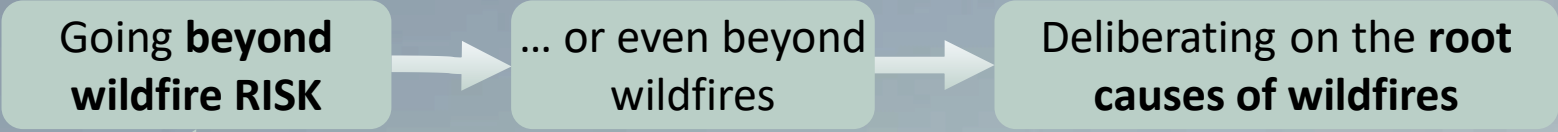
What can we learn from these
**community-based wildfire
initiatives** on communicating
about wildfires?



Going **beyond
wildfire RISK**

... or even beyond
wildfires

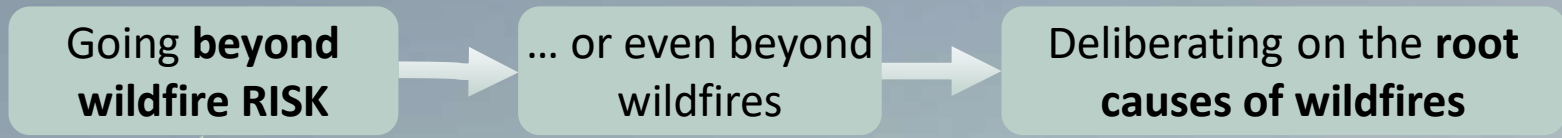
What can we learn from these
**community-based wildfire
initiatives** on communicating
about wildfires?



What can we learn from these **community-based wildfire initiatives** on communicating about wildfires?

'we've had 2 extreme wildfires in 7 years!'

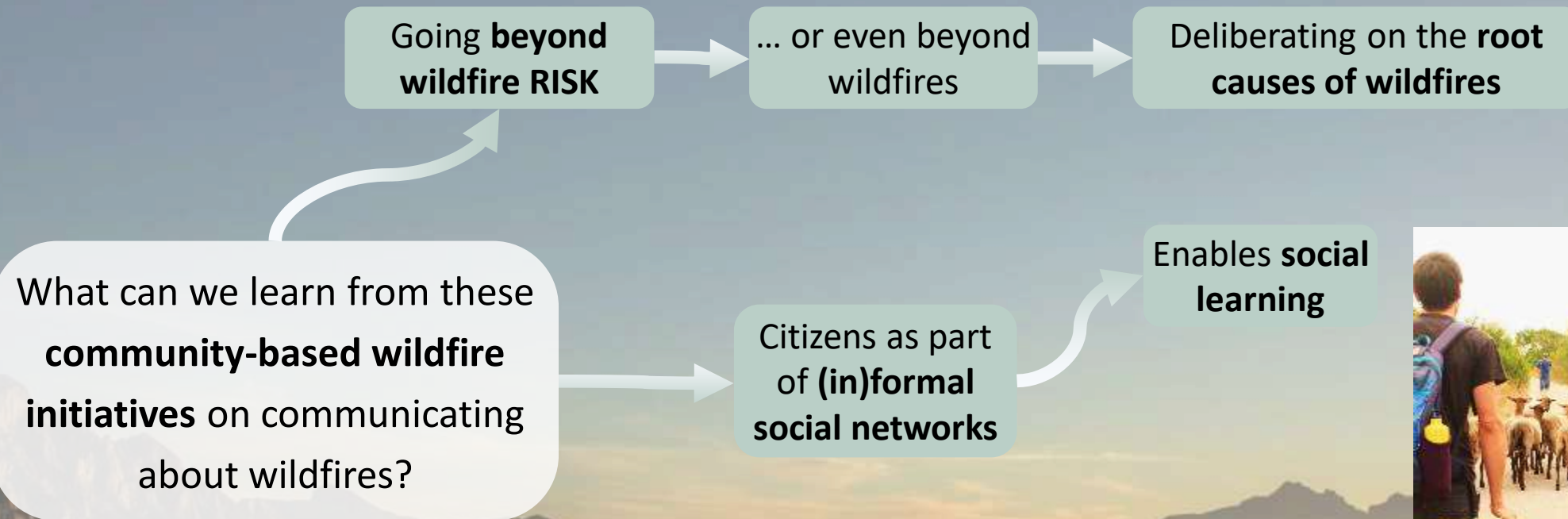




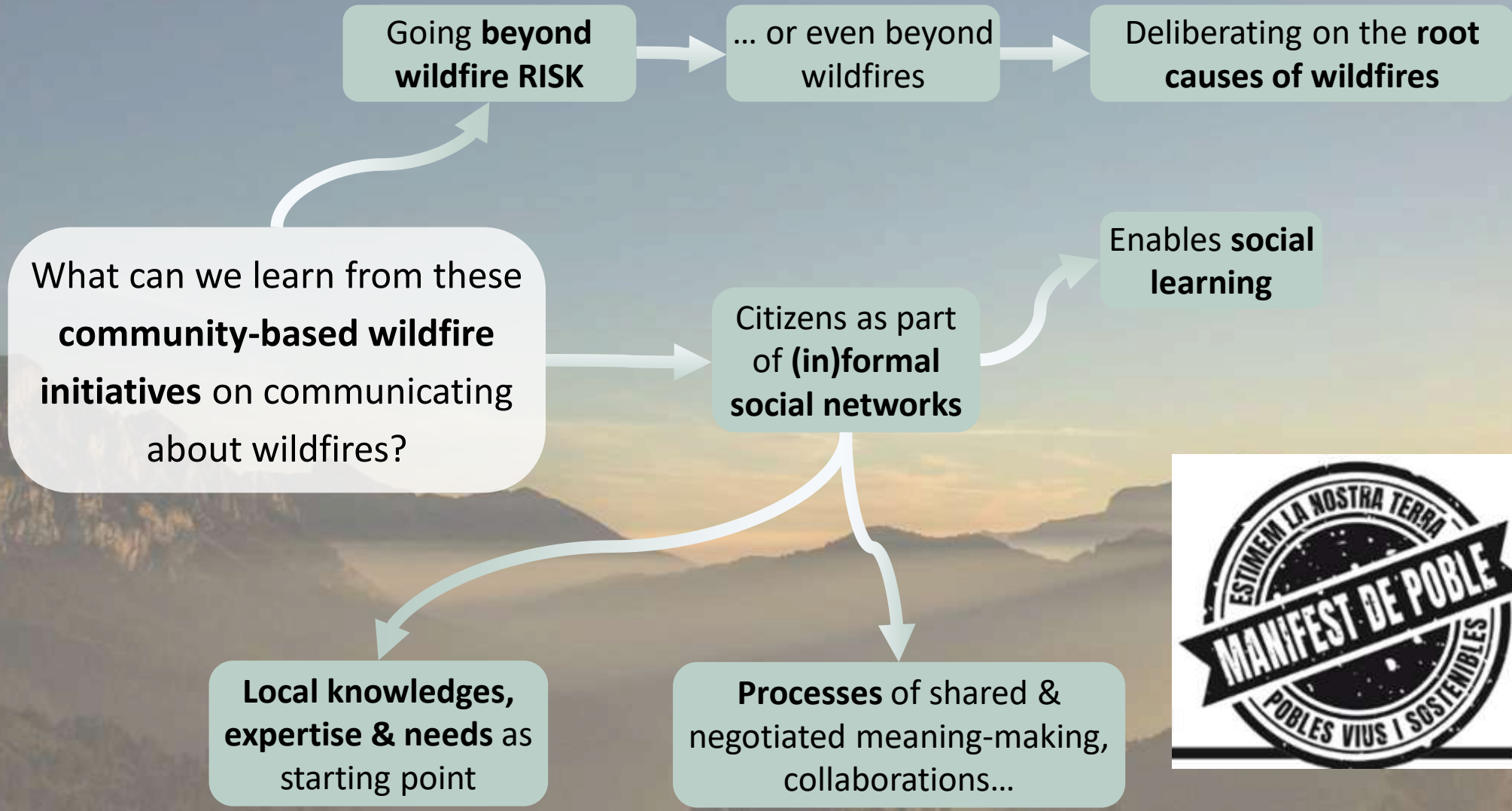
What can we learn from these **community-based wildfire initiatives** on communicating about wildfires?

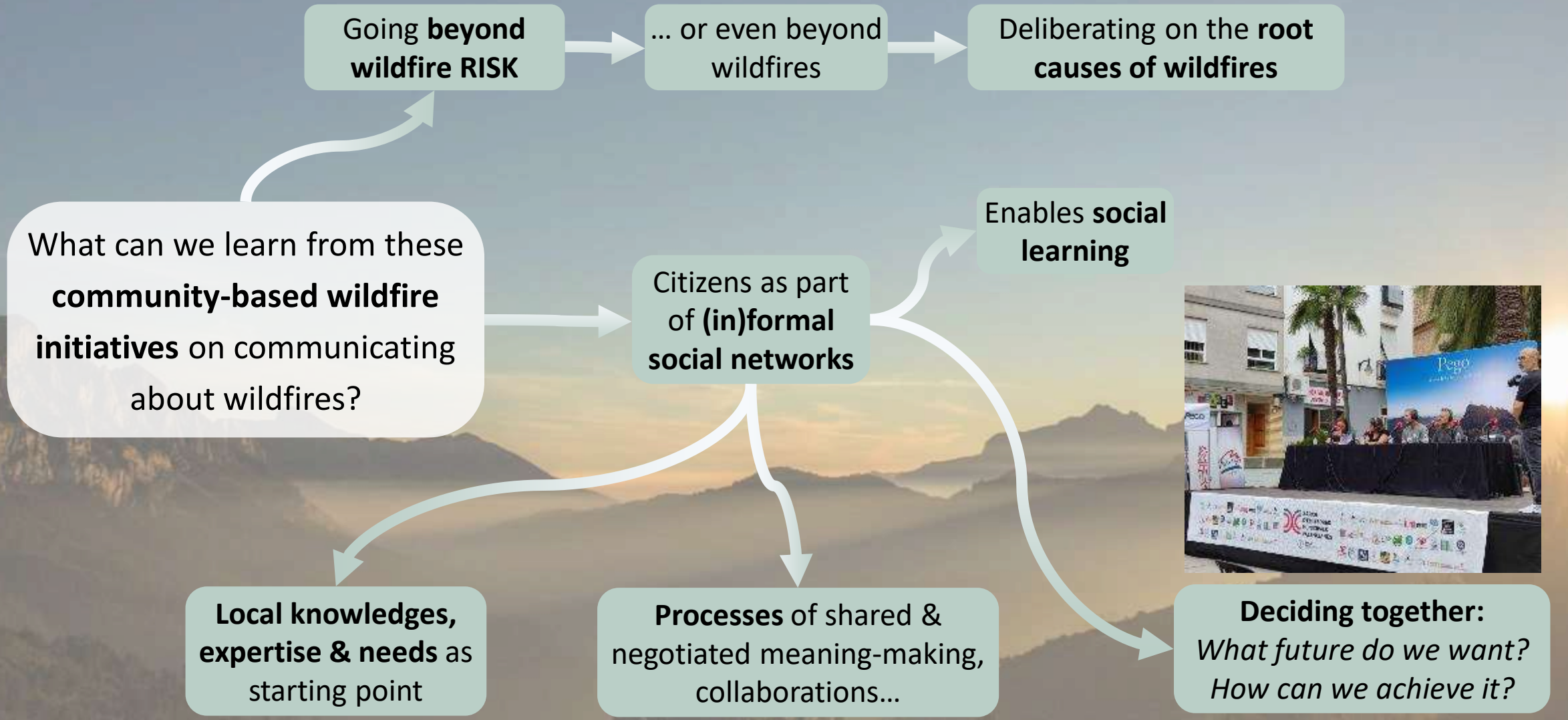
Citizens as part of **(in)formal social networks**











Deciding together:
What future do we want?
How can we achieve it?



Going beyond Wildfire Risk Communication implies considering:

- **Wildfires** are not just risks to manage, but **inherently part of our socioenvironmental systems**: a much broader communicative field!
- **Communities** are not unknowledgeable, isolated individuals, but **part of social networks**, where **social learning** takes place - through a diversity of knowledges and experiences



Going beyond Wildfire Risk Communication implies considering:

- **Wildfires** are not just risks to manage, but **inherently part of our socioenvironmental systems**: a much broader communicative field!
- **Communities** are not unknowledgeable, isolated individuals, but **part of social networks**, where **social learning** takes place - through a diversity of knowledges and experiences

Community-based wildfire initiatives are:

- A specific way of **co-creating more situated** ways of **Living with Wildfires**
- Center local peoples' **experiences, knowledges, interests and needs**
- **Goes beyond wildfire (risk)**, to work on the self-identified root causes of disaster



Going beyond Wildfire Risk Communication implies considering:

- **Wildfires** are not just risks to manage, but **inherently part of our socioenvironmental systems**: a much broader communicative field!
- **Communities** are not unknowledgeable, isolated individuals, but **part of social networks**, where **social learning** takes place - through a diversity of knowledges and experiences

Community-based wildfire initiatives are:

- A specific way of **co-creating more situated** ways of **Living with Wildfires**
- Center local peoples' **experiences, knowledges, interests and needs**
- **Goes beyond wildfire (risk)**, to work on the self-identified root causes of disaster

How can we (scientists, communicators, fire practitioners, policy-makers) support and engage with Community-based wildfire initiatives?



Thank you!

Questions or comments?



iottolini@uoc.edu