



13th International Symposium
on Endovascular Therapeutics

Thoracic Endografting with the new NAVION from Medtronic

V. Rimbau / A. Russo



Medtronic

Low Profile with a new ergonomic delivery system

HOW DID WE ACHIEVE LOW PROFILE?

1 **Optimized Stent Design:**
Shorter struts, aligned peaks and valleys

2 **New Thoracic Graft Material:**
Softer more flexible Endurant yarn optimized for thoracic

3 **Redesigned RO Markers:**
Smaller bead-like RO markers for visualization

4 **New Proprietary Loading Process**
Graft now packed using a pull method like Endurant

R
i
g
o
r
o
u
s

T
e
s
t
i
n
g



Patient applicability

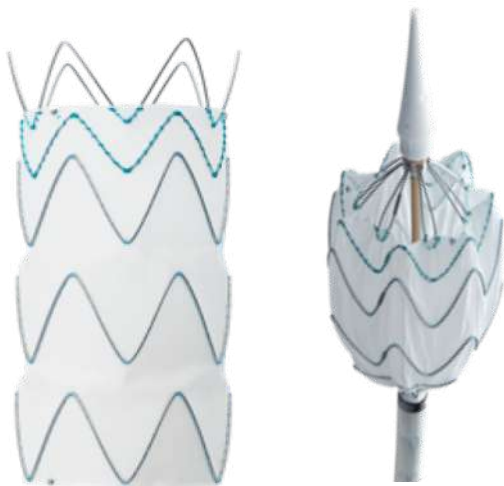
STENT GRAFT CONFIGURATION OPTIONS

PROXIMAL DEVICE CONFIGURATION

Physicians now have proximal device options

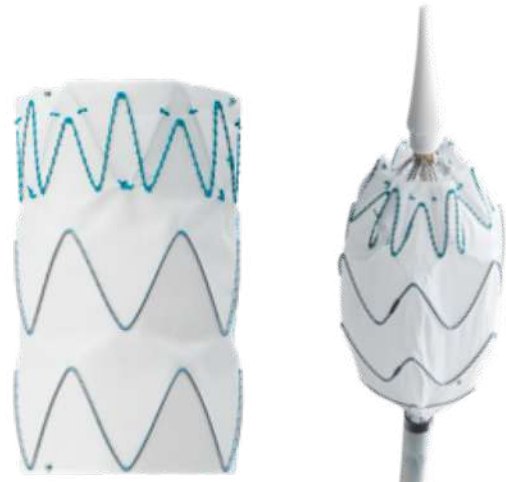
1 FreeFlo

- Allows trans-vessel flow
- Tip capture mechanism
- $\geq 2\text{cm}$ landing zone



2 CoveredSeal

- No proximal bare metal
- Tip capture mechanism
- $\geq 2.5\text{cm}$ landing zone



ACCESSIBILITY & TRACKABILITY

TAPERED TIP

REDUCED LENGTH OF TAPERED TIP

Ability to reach further atraumatically

Tapered Tip

- Length reduced by ≥ 10 mm
- Length proportionally sized to maintain taper



Valiant Navion

18Fr – 23.3 mm

20Fr – 25.6 mm

22Fr – 27.9 mm



Valiant Captiva

22Fr – 37.9 mm

ACCURATE
CONTROLLED
DEPLOYMENT

ERGONOMICS

IMPROVED DELIVERY SYSTEM MATERIALS

Improved feel and design of delivery and deployment

New Ergonomic Front Grip, Slider Handle, and Trigger

- Versaflex material engineered for enhanced feel
 - Softer, more comfortable versus Captivia's hard plastics
- Enhanced safety, comfort, and control during device delivery

Valiant Captivia



Valiant Navion



- **85 YO Female.**

- **Hypertension**

- **Diabetes**

- **Good functional status**

2 Months ago:

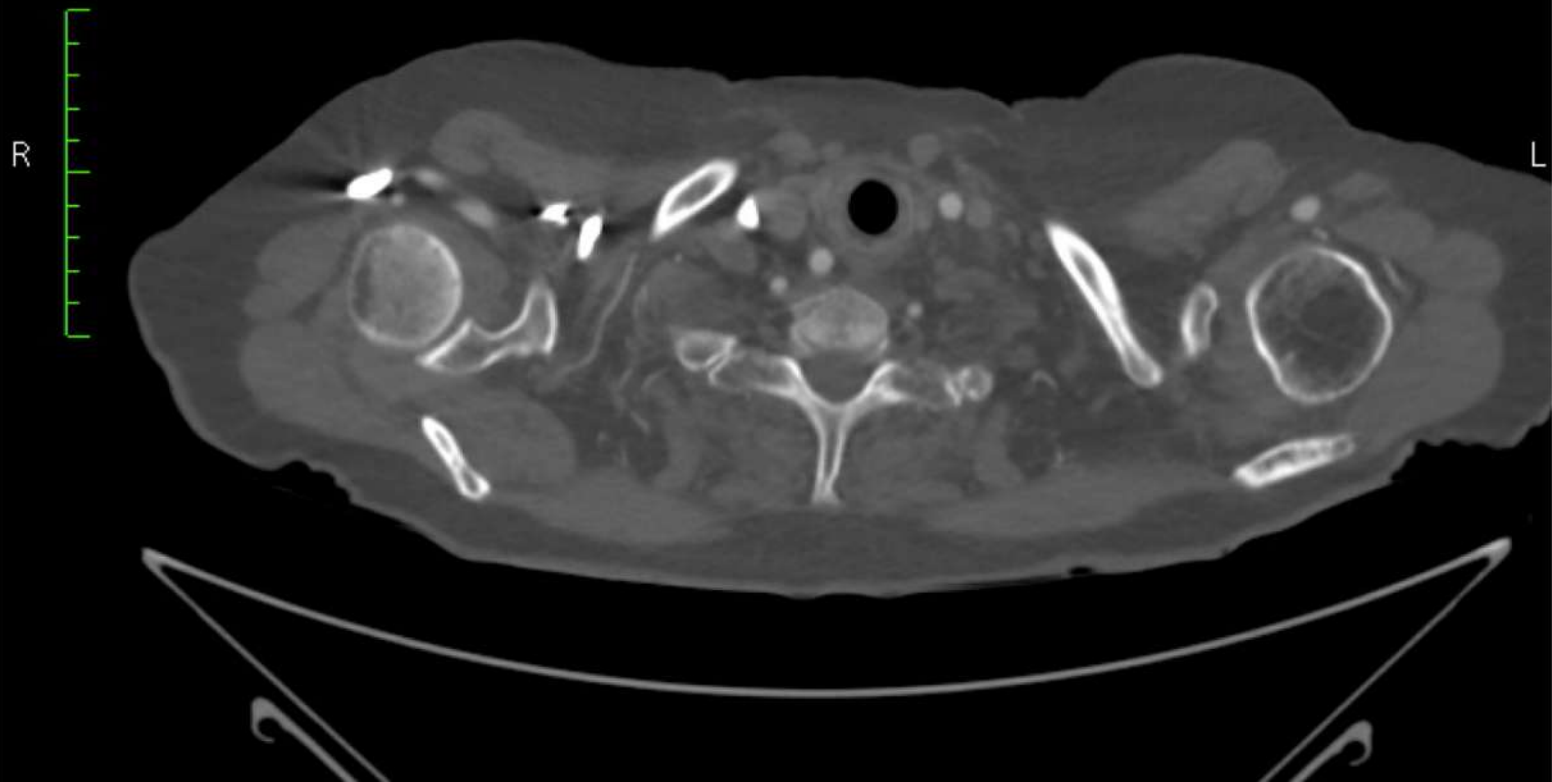
- **Fever no clear etiology**

- **Blood culture + *S. Pyogenes***

- **Started Ceftriaxona 1g i/v during 4 weeks**

- **Pet Scan: hyper metabolic activity aortic arch and descending Aorta.**

- **Angiotc**





AR

PL

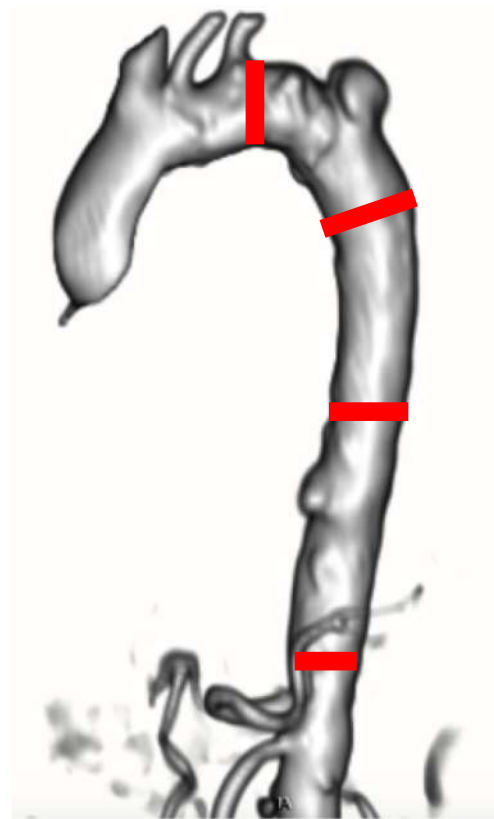


IA

S-I: 7.7
L-R: 69.3
Rot: 10.2

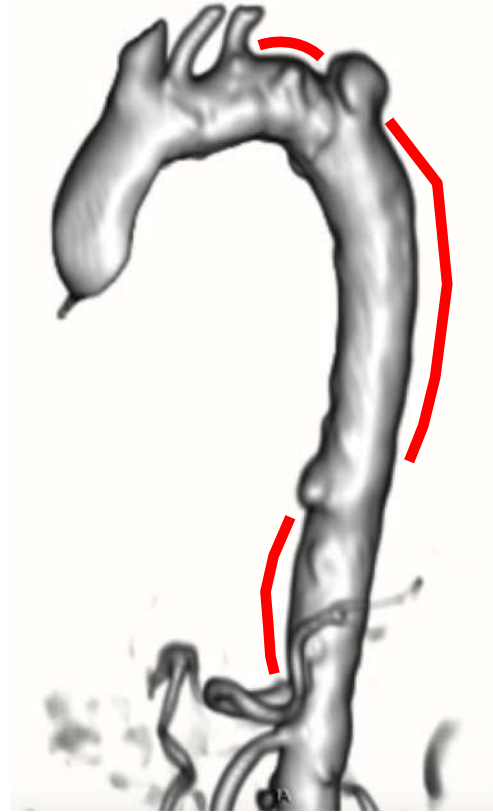
Diameters:

- Z2: 29mm
- Distal to proximal PAU: 28mm
- Proximal to distal PAU: 26mm
- Proximal to celiac trunk: 25mm
- Iliac Access 8mm, no stenosis



Length:

- LSA - Proximal PAU: 28mm
- Proximal PAU - Distal PAU: 120mm
- Distal PAU - Celiac Trunk: 52 mm



Planning:

- Proximal PAU

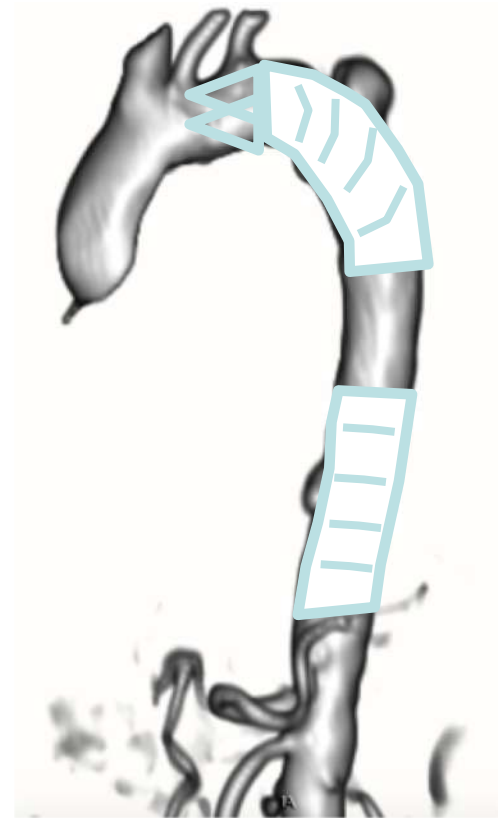
FREEFLO STRAIGHT

	Product Code				
VNMF	34	34	C	97	TU
VNMF	34	34	C	174	TU

- Distal PAU

COVEREDSEAL STRAIGHT

	Product Code				
VNMC	28	28	C	90	TU
VNMC	28	28	C	182	TU





Medtronic

- **Patient had a good evolution.**
- **Discharged home the day after**
- **Amoxiciline orally for 1 month.**
- **New PET scan within 1 month**



13th International Symposium
on Endovascular Therapeutics

Thoracic Endografting with the new NAVION from Medtronic

V. Rimbau / A. Russo



Medtronic