

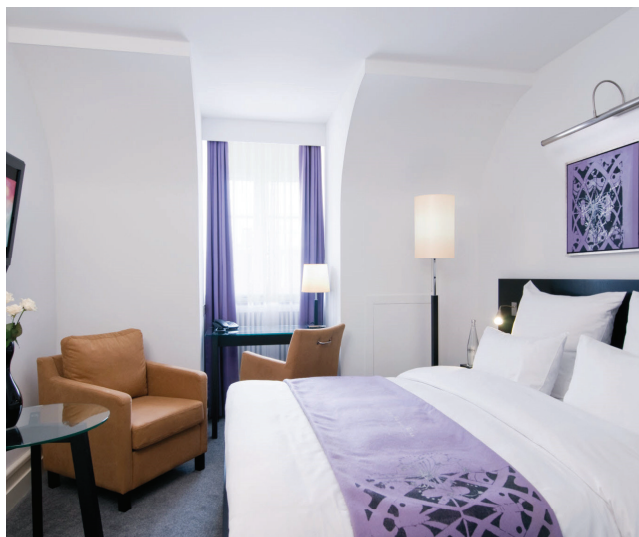
## SCANDIC PALACE HOTEL

★ ★ ★ ★

Scandic Palace Hotel is located on Rådhuspladsen (City hall) in the heart of Copenhagen. The hotel is known for its beautiful and unique architecture and since 1910 it has been a gathering place for Copenhageners, Royal Families and international guests. The hotel is decorated in a modern and luxurious design. Hotel is across the street from Tivoli Gardens and a stroll down Copenhagen's popular pedestrian street Strøget.

Room sizes - Standard Queen Room approx. 15-17 sqm, Standard Double Room approx. 15 - 22 sqm

Bed sizes - Standard Queen Room Queen bed 140 cm, Standard Double Room Double bed 140 cm or Twin beds 2 x 90 cm



### PROPERTY FEATURES

<b>Smoking:</b>	Non-smoking hotel		
<b>Included Wi-Fi:</b>	All rooms and public areas		
<b>Room Service:</b>	Certain hours only		
<b>Porterage:</b>	Extra charge		
<b>Wellness:</b>	Gym available		
<b>Restaurant:</b>	✓	<b>Meeting Facilities:</b>	✓
<b>Bar:</b>	✓	<b>Concierge:</b>	✓

### ROOM FEATURES

<b>Coffee/Tea Maker:</b>		<b>Minibar:</b>	✓
<b>Air Condition:</b>	✓	<b>Telephone:</b>	✓
<b>Private Bathroom:</b>	✓	<b>TV:</b>	✓
<b>Desk:</b>	✓	<b>Safety Box:</b>	✓
<b>Hair Dryer:</b>	✓	<b>Ironing:</b>	✓

### LOCATION

<b>Address:</b>	Rådhuspladsen 57, 1550 Copenhagen
<b>Closest Station:</b>	Bus Stop, Line 250S
<b>Distance:</b>	Max 5 min walk

### DISTANCES

	Taxi	Public	Walking
<b>Congress Center:</b>	15 min	28 min	N/A
<b>City Center:</b>	0 min	0 min	N/A
<b>Copenhagen Airport:</b>	25 min	25 min	N/A