

# EAGE

EUROPEAN  
ASSOCIATION OF  
GEOSCIENTISTS &  
ENGINEERS

FIRST ANNOUNCEMENT & CALL FOR ABSTRACTS

## Second EAGE Workshop on assessment of landslide hazards and impact on communities

8-11 September 2020  
Kyiv, Ukraine

[www.eage.org](http://www.eage.org)



## INVITATION

### Dear colleagues!

Second EAGE Workshop on assessment of landslide hazards and impact on communities based on the monitoring and modelling of these processes using integrated techniques. The aim of this workshop is to introduce the impact of these processes on the building, transport, recreational infrastructure and to discuss what needs to be done to minimize the risk of natural hazards.

The Workshop will be co-organized and partly funded by Research England Global Challenges Research Fund (GCRF), provided by Research England within the framework of Research Project “Building landslide-resilient communities” (City, University of London and Taras Shevchenko National University of Kyiv (Ukraine))



The Workshop offers a rich scientific programme and a great opportunity to obtain useful information about landslide activity, to join the scientific debate, create partnerships, and to participate in informal meetings, plus interesting and fascinating field excursions within the Middle Dnieper Area. It is also important to note that the conference welcomes students and young scientists in order to provide the venue where they can demonstrate and implement their experience in research, as well as absorb the knowledge and skills from experienced scholars.

The workshop will take place in the wonderful city with a lively history – Kyiv, capital of Ukraine. The city's well-preserved historic center has a lot of attractions. The Kyiv Opera House is dazzling and hosts world-class performances.



## INTERNATIONAL PROGRAMME COMMITTEE

<b>Dr. Olena Ivanik</b>	<b>Taras Shevchenko National University of Kyiv (Ukraine)</b>
<b>Dr. Joana Fonseca</b>	<b>City, University of London (UK)</b>
Dr. Sergiy Vyzhva	Taras Shevchenko National University of Kyiv (Ukraine)
Dr. Wei Wu	Institute of geotechnical Engineering, University of Natural Resources and Life Sciences (Austria)
Mihai Micu	Institute of Geography, Romanian Academy
Dr. Stella Shekhunova	Institute of Geological Sciences, National Academy of Sciences of Ukraine
Jean-luc Debroux	Taras Shevchenko National University of Kyiv (Ukraine)

## TECHNICAL PROGRAMME

The technical programme consists of oral and poster presentations on a wide range topic. The main working language of the conference - English.

### TOPICS

01	Regional and local forecasting of landslides
02	Monitoring and multiscale modelling of landslides and debris flows
03	Assessment of natural hazards and new techniques for risk mitigation
04	Building landslide-resilient communities and social aspects of landslide hazards assessment
05	Geophysical methods and Remote sensing for landslide investigations

### VENUE

**Taras Shevchenko National University of Kyiv,  
Vasilkivska str., 90**





## IMPORTANT DATES

Call for papers deadline	15 August 2020
Notification about the Programme to the Authors	30 August 2020
Workshop	8-11 September 2020

## WORKSHOP OVERVIEW

<b>Tuesday 8 September</b>
10.00 – 17.00 Registration
13.00 – 14.00 Opening Session
14.00 – 16.00 General session
17.00 – 19.00 Welcome reception
<b>Wednesday 9 September</b>
9.00 – 17.00 Registration
9.30 – 17.00 Technical Sessions
19.00 – 23.00 Workshop evening
<b>Thursday 10 September</b>
7.30 – 21.00 One day Field trip

## REGISTRATION

EAGE members	€ 200
Non members <sup>1</sup>	€ 250
Students <sup>2</sup>	€ 125
Family members <sup>3</sup>	€ 100

<sup>1</sup>The non-member fee includes EAGE membership for the rest of 2019.

<sup>2</sup>To qualify for the reduced student registration fee:

- Students must be enrolled in a full time study programme at a recognized university or institute.
- The registration must be accompanied by a copy of a student ID card and/or official proof of enrolment.

<sup>3</sup> Family members allowed access to the Welcome Reception and Conference evening and Field trip  
Please note that the EAGE reserves the right to cancel the workshop(s) and/or field trip(s) and/or short course due to low participation. In this case, payment will be refunded in full.

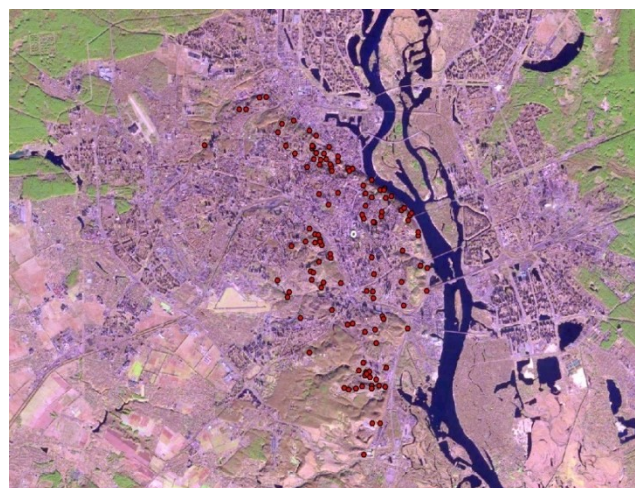
## FIELD TRIP

One-day field trip will take place within the Middle Dnieper area of Ukraine. This area features active development of landslide phenomena, suffusion processes, floods and side erosion of riverbeds.

Field equipment for the assessment of geohazards will be demonstrated (GPR, electrotomography, Infrared Thermography (IRT)).

Our route will cross tectonic zones of Ukrainian Shield. We shall see reference cross-section of Paleogene, Neogene and Quaternary deposits. These zones feature various manifestations of geological hazards caused by human impact and/or natural factors.

The journey will start in Kyiv, where a great number of active landslides occurred (more than 150).



*Distribution of landslides in Kyiv area*

For many years, geologists and engineers alerted about landslide hazards in this area. The determining factors of these processes are lithological and stratigraphic conditions; hydrogeological regime; structural and textural features of rocks and forms of their occurrence; geomorphology of slopes. The second category of factors includes dynamic processes that change the state of slopes, erosion, weathering, tectonic regime of the area, and anthropogenic effects. We shall observe landslide processes of various kinds, river erosion, and rockfalls.



*Rotational Landslides in Kyiv and their investigations by drones (Lysa Mountaine)*

One of our observation points will be a major landslide in central part of Kyiv (near metro station Lybidska), which emerged March, 2013 and caused accident. The main sources of this accident are hydrogeological factor, heavy precipitation and human activity.



*Landslide near metro station Lybidska*

Active landslide processes will be a subject of our inspection in Rzhyshev village. We shall speculate about possible causes of these processes. The principal factors in their formation are abrasion, geomorphological and tectonic features. We shall discuss the potential use of geophysical methods and Infrared Thermography (IRT) for forecast of such processes.

We shall see the consequences of landslides and consider main factors of their formation. We shall learn principal stages of field data collection for mathematical modelling of landslides and assessment of their hazardous impact on the infrastructure.



*Landslides in Rzhyshev village and surrounding area*

## **SOCIAL PROGRAMME**

**Welcome reception** Thursday 8 September, 17:00 – 19:00 hrs Meet with your colleagues and increase your network, while enjoying delicious Ukrainian food and drinks.

## **Workshop evening**

Wednesday 9 September, 19:00 – 23:00 hrs



Join us for an informal dinner on Tuesday evening. All registered full delegates are invited to come and enjoy an evening filled with Ukrainian hospitality, gastronomy and entertainment.

## **CALL FOR PAPERS**

Please visit the Workshop website [www.eage.org](http://www.eage.org)

## **CONTACTS:**

For any questions regarding Workshop, please contact:

### **EAGE Kyiv Service Point**

Tel.: +380 66 144 32 79

E-mail: [dba@eage.org](mailto:dba@eage.org)

[www.eage.org](http://www.eage.org)