

EAGE

CONFERENCE & EXHIBITION

NEAR SURFACE GEOSCIENCE'20

7-8 DECEMBER 2020 | ONLINE

26th

European Meeting of
Environmental and
Engineering Geophysics

4th

Applied Shallow Marine
Geophysics Conference

3rd

Conference on Geophysics
for Mineral Exploration
and Mining

PROGRAMME &
CATALOGUE

WELCOME TO THE NEAR SURFACE GEOSCIENCE 2020 ONLINE

26th

European Meeting of
Environmental and
Engineering Geophysics

4th

Applied Shallow Marine
Geophysics Conference

3rd

Conference on
Geophysics for Mineral
Exploration and Mining

It's been quite a journey for the Near Surface Geoscience 2020 Conference & Exhibition but we are finally there! On 7-8 December you will be able to join the special online version and experience what our conference and exhibition have to offer. Register today and attend from your preferred location, with no need for other arrangements except for a strong internet connection.

We are confident that the programme that we have devised will meet all the quality criteria traditionally expected of this longstanding event in the industry calendar.

We have over 25 sessions that offer a diverse range of topics related to Applied Shallow Marine Geophysics, Geophysics for Mineral Exploration and Mining, innovative technical and hardware solutions for Environmental and Engineering Geophysics, and more!

Along with the conference proceeding we are of course hosting the **Online Exhibition**. Our plan is to connect companies in the near-surface field with our delegates, and enable them to showcase their newest activities, products and services. As an event participant you will be able to interact with our exhibitors and get the latest reports on how the industry has advanced and adapted in recent times.

26th

European Meeting of Environmental
and Engineering Geophysics

For its 26th edition, the European Meeting of Environmental and Engineering Geophysics will continue to build on 26 years of research and development in the field of engineering geophysics as we join two of our successful conferences. The three day scientific conference will cover a wide array of topics related to the near surface field, drawing on a wealth of excellent plenary talks, oral and poster presentations, and rich discussions.

Being Europe's most significant meeting of its kind, the 26th European Meeting of Environmental and Engineering Geophysics offers participants the opportunity to meet the people behind the most cutting-edge research across a range of topics, from the applications of geophysics to the emergence of new technologies and research trends. Take part in the bright future of environmental and engineering geophysics, and join us.



Applied Shallow Marine Geophysics Conference

Following the successful conferences in Athens (2014), Barcelona (2016) and Porto (2018), professionals from academia, research institutes, service and engineering companies, operators and offshore energy companies will reconvene, to further present and discuss the state-of-the-art in characterizing the shallow subsurface in aquatic settings (rivers, lakes, fjords, coastal systems, offshore and deep offshore).

The safe assessment of site conditions for all types of marine installations and infrastructure requires a detailed understanding of the shallow subsurface and the changes therein over the lifetime of the areas of interest. This essential objective can only be achieved through the extensive use of complementary geophysical methods and monitoring approaches, as well as a proper, data-driven integration of geotechnical, geomechanical, metocean and geophysical data and models.

The 4th conference will cover the widest range of topics of applied high-resolution geophysics in all types of aquatic settings, with specific focus on:

- Characterization and monitoring in shallow water environments, lakes, river beds and coastal areas for engineering (bridges, tunnels, harbour installations, dredging) and specific processes assessment (liquefaction, excavations, erosion) and their mitigation;
- Geophysical investigations for offshore wind energy and Oil & Gas activities;
- Environmental geophysics (e.g., pollution of sewage, nuclear waste deposits, identifying contaminants, archaeology);
- Research into the effects of global warming/climate change in vulnerable areas (e.g., polar regions, coastal areas);
- Advances in integration and very-high-resolution inversion for establishing data-driven ground models and uncertainty assessment;
- Novel data acquisitions, data processing and data analysis techniques (multi-method approaches, beyond P-wave reflection for the marine environment; Machine Learning);
- Monitoring and risk mitigation assessment (including CO₂ Capture and Storage activities);
- International guidelines and standards;
- Case studies.



Conference on Geophysics for Mineral Exploration and Mining

Following the two EAGE Conferences on Geophysics for Mineral Exploration and Mining in Barcelona, 2016, and in Porto, 2018, the Third Conference will invite researchers from academia, industry, and government organizations to share recent advances, trending topics, and novel geophysical methods in mineral exploration and mining. Geophysics plays a major role in unlocking mineral reserves. It is well recognized that many easily-discovered large mineral deposits with the strong geophysical signature have been already identified. Future discoveries present significant challenges being located undercover, in remote areas, with less prominent geophysical signal.

The modern-day challenges of exploration require developing novel geophysical techniques, which improve exploration success and lead to new discoveries. The Third Conference invites papers which focus on emerging geophysical techniques for mineral exploration, novel interpretation methods, including joint inversion of multiphysics data, and challenging case studies. We encourage contributions from all over the world, especially those with a European focus and application.

Highlights of NSG2020 Online

Opening Session

Monday, 7 December | 10:30 - 11:20 CET

Join us for the Opening Session where we will kick off the event by exploring the future of the Near Surface Division and the continued sustainability of the wider near surface-related field.

Keynote Speakers



Jun Sugawara

Director of Geotechnical Section at Department of Transport and Main Roads Queensland Government, Australia



Frank van Erp and Peter-Paul Lebbink

Project managers Off Shore Wind Energy, Netherlands Enterprise Agency (RVO)



Valentina Socco

Associate Professor of Geophysics at Politecnico di Torino, Italy

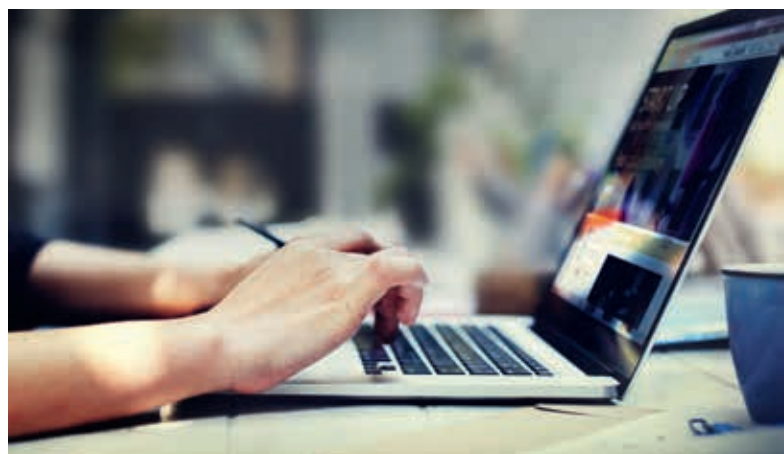
Happy NSG Hour

Monday, 7 December | 12:30 - 12:55 CET

Near-surface Geoscience Division of EAGE is pleased to invite you to the virtual Happy NSG Hour event that will take place during the online NSG2020 on 7 December. We are proud of our near-surface geoscience community and personal network, and the great atmosphere the NSG events bring for our members.

We want to provide a taste of all of the above even during this difficult time of the Covid-19 pandemic. Which is why we welcome you to join this Happy NSG Hour event for catching up with colleagues, collaborators, friends and networks and to hear how you are doing while enjoying a friendly atmosphere and more importantly look into year 2021 and beyond.

Dress casually and bring your drinks to this virtual happy hour event and we will make sure it will be an attractive hour for you. Looking forward to seeing you at the Happy NSG Hour!



Closing Session

Tuesday, 8 December | 14:00 - 14:45 CET

Join us as we look forward to the Near Surface Geoscience Conference & Exhibition in Bordeaux, France next year between 29 August – 2 September 2021, and officially close this year's activities.

List of Exhibitors

NSG 2020 Online will include a dedicated Online Exhibition. Key international companies from the Near Surface Geoscience industry will present their latest developments, newest technologies and innovative ideas. Make sure you engage with them on event days via the virtual platform!

- BP
- Equinor
- Applied Acoustics
- Geometrics
- Aarhus
- Geotomographie
- Geovista
- EAGE
- Smart Exploration

Thank you to our Sponsors

Main Sponsor



Technical Programme Sponsors



Technical Programme Schedule

Presentations | Monday 7 December



26 TH EUROPEAN MEETING OF ENVIRONMENTAL AND ENGINEERING GEOPHYSICS	
TRACK 1	TRACK 2
10:30 - 11:20	Opening Session
Environmental Geophysics I - Geohazard and Anthropogenic Hazard Studies Session Chairs: D. Đurić (University Of Belgrade, Faculty Of Mining And Geology), F. Tuluca (Romanian Society of Applied Geophysics)	New Technologies, Developments and Research Trends Session Chair: R. Persico (University Of Calabria),
11:30 A Non-Seismic Data Interpretation of Gas Seepage in the Mesohellenic Basin in Greece - G. Papailias ^{1*} , G. Efremidis ² ¹ Greek Ministry Of Transport And Infrastructure; ² Geotechnical and Geoenvironmental Engineering of the Civil Engineering Department, University of Thessaly	11:30 Drone-Borne Electromagnetic (DREM) Surveying in The Netherlands - M. Karaoulis ^{1*} , I. Ritsema ¹ , C. Bremmer ¹ , M. De Kleine ² ¹ Deltares; ² Mdk-Geologic
11:40 Integration of ERT and MASW Methods for Cavity and Weak Zones Detection, Case Studies - H.A. Hamdan ^{1*} ¹ University of Sharjah	11:40 Efficient State-of-Art HDR 3D GPR Compared to 2D Traditional Utility Investigations - J. Emilsson ¹ , A. Viberg ¹ , J. Gustafsson ^{1*} , M. Langton ¹ , J. Friberg ¹ ¹ Guideline Geo
11:50 Two Dimensional ERT Simulations to Check the Integrity of Geomembranes at the Base of Landfill Bodies - A. Aguzzoli ^{1*} , A. Hojat ² , L. Zanzi ³ , D. Arosio ¹ ¹ Università Degli Studi di Modena E Reggio Emilia; ² Shahid Bahonar University of Kerman; ³ Politecnico di Milano	11:50 A New Technique for Increasing the Sensitivity of Marine DC-Electrical Resistivity Acquisitions - S. Palma Lopes ^{1*} , P. Côte ¹ ¹ Université Gustave Eiffel
12:00 Practical Application of Kinematic Fracture Analysis in Assessing the Probability of Slope Failure - S. Korchak ^{1*} , I. Abaturova ¹ , I. Savintsev ¹ , L. Storozhenko ¹ ¹ Ural State Mining University	12:00 Surface Seismic with Distributed Acoustic Sensing: Is Trenching Worthwhile? - A. Nap ^{1*} , P. Edme ¹ , C. Schmelzbach ¹ , P. Paitz ¹ , J.O.A. Robertsson ¹ ¹ ETH Zürich
12:10	12:10 Monitoring a Drilling Trajectory by Using the Drill-Bit Signal as a Source - J. Ridderbusch ¹ , M. Abbasian ¹ , A. Kasilar ^{1*} ¹ Uppsala University
12:30 - 12:55	Happy NSG Hour
Environmental Geophysics II - Geohazard and Anthropogenic Hazard Studies Session Chair: E. Bloem (Norwegian Institute of Bioeconomy Research)	Modelling, Inversion and Data-Processing in Near-Surface Geophysics I Session Chair: T. Burschil (Leibniz Institute for Applied Geophysics)
13:00 Geophysical Recipe to Model the Covid-19 Epidemic - A. Godio ¹ , F. Pace ¹ , A. Vergnano ^{1*} ¹ Politecnico Di Torino	13:00 Joined Migrations in GPR Prospecting: An Example in the Field - R. Persico ^{1*} , G. Morelli ² ¹ University Of Calabria; ² Geostudi Astier Ltd
13:10 Monitoring System for Remediation of a Brownfield Area - K. Tsakirpaloglou ^{1*} , T. Martin ¹ , O. Kaufmann ¹ , P. Goderniaux ¹ ¹ UMONS	13:10 A Convolutional Neural Network Approach to Electric Resistivity Tomography - M. Aleardi ¹ , A. Vinciguerra ^{2*} , A. Salusti ² ¹ University of Pisa; ² University of Florence
13:20 Coastal Soil Characterization Using Remote Sensing, Goelectrical and Borehole Data: Insights from Nile Delta Coast, Egypt - M. Attwa ^{1,2*} , A. El Mahmoudi ³ , A. Altahrany ⁴ , A. Elshennawy ³ ¹ Structural Geophysics Group (SGG), Zagazig University, Faculty of Science; ² National Authority for Remote Sensing and Space Sciences, (NARSS); ³ Mansoura University, Faculty of Science; ⁴ Mansoura University, Faculty of Engineering	13:20 Novel Approach to Modelling the Elastic Waves in a Cluster of 3D Fractured Structures - N. Khokhlov ¹ , P. Stognii ^{1*} , M. Zhdanov ^{1,2,3} ¹ Moscow Institute of Physics & Technology; ² University of Utah; ³ TechnoImaging
13:30 Geostatistical Electromagnetic Inversion for Landfill Characterization - J. Narciso ^{1*} , L. Azevedo ¹ , E. Van De Vijver ² , M. Van Meirvenne ² ¹ CERENA/DECivil, Instituto Superior Técnico, Universidade de Lisboa; ² Department of Environment, Ghent University	13:30 Points Per Wavelength Analysis in Global Elastic Fwi of Surface Waves: A Synthetic Case Study - S. Pierini ^{1*} , E. Stucchi ¹ ¹ University Of Pisa
13:40	13:40 3D Subsurface Resistivity Imaging Using a Modified Roll-Along Measurement Technique - Y. Gundogdu ^{1*} , G.E. Karakulak ¹ , M.E. Candansayar ¹ ¹ Ankara University, Geophysical Modeling Group

26 TH EUROPEAN MEETING OF ENVIRONMENTAL AND ENGINEERING GEOPHYSICS	
TRACK 1	TRACK 2
Exploration under Cover Session Chair: G. Apostolopoulos (National Technical University of Athens)	Modelling, Inversion and Data-Processing in Near-Surface Geophysics II Session Chairs: R. Persico (University Of Calabria)
14:00 Imaging Glacial Sediments and Tectonics with a Small-Scale 3-D Reflection Seismic Survey - H. Bunes ^{1*} , T. Burschil ¹ , D. Tanner ¹ ¹ Leibniz Institute for Applied Geophysics (LIAG)	14:00 3-D Multi-Component S-Wave Survey in the Tannwald Basin: Data Processing and Component Rotation - T. Burschil ^{1*} , H. Bunes ¹ , C. Schmelzbach ² ¹ Leibniz Institute for Applied Geophysics; ² Institute of Geophysics, ETH Zurich
14:10 Delineating Shallow Bedrock Geology beneath Glacial Cover Using Multi-Parameter Geophysics - A. Ondercova ^{1*} , A. Furlan ² , H. Ugalde ² , B. Milkereit ¹ ¹ Department of Earth Sciences, University Of Toronto; ² Department of Earth Sciences, Brock University	14:10 Discrete Cosine Transform for Parameter Space Reduction in Bayesian ERT Inversion - A. Vinciguerra ^{1*} , M. Aleardi ² , A. Hojat ³ , E. Stucchi ² ¹ University of Florence; ² University of Pisa; ³ University of Kerman
14:20 Anticlines Prediction Using Deep Learning - R. Okhrimchuk ^{1*} , I. Tishaiev ¹ , V. Zatserkovnyi ¹ ¹ Taras Shevchenko National University of Kyiv	14:20 Inverse Scattering of Surface Waves: Imaging Density and Lamé Parameter Contrasts of near Surface Scatterers - U. Harmankaya ^{1*} , A. Kaslilar ² ¹ Istanbul Technical University; ² Uppsala University
14:30 Utilisation of Stochastic MT Inversion Results to Constrain Gravity Inversion - J. Giraud ^{1,2*} , H. Seillé ³ , G. Visser ³ , V. Ogarko ⁴ , M. Lindsay ^{1,2} , M. Jessell ^{1,2} ¹ Centre of Exploration Targeting (School of Earth Sciences), University of Western Australia; ² Mineral Exploration Cooperative Research Centre, School of Earth Sciences, University of Western Australia; ³ CSIRO Deep Earth Imaging Future Science Platform; ⁴ International Centre for Radio Astronomy Research (ICRAR), University of Western Australia	14:30 Azimuthal Anisotropy in Layer Media from SV and SH Velocities Obtained by Ray-Based Tomography - G. Böhm ^{1*} ¹ OGS - Istituto Nazionale di Oceanografia e di Geofisica Sperimentale
14:40	14:40 Differential Inversion of Surface Wave Methods: Proposition of Diagram Distance as Inversion Data - A. Wang ^{1*} , D. Leparoux ¹ , O. Abraham ¹ , M. Le Feuvre ¹ ¹ Gustave Eiffel University, Campus Nantes
Groundwater Exploration and Hydrogeophysics I Session Chair: J. Alcalde (Geosciences Barcelona, CSIC)	Integrated Approaches in Near-Surface Geophysics Session Chair: D. Đurić (University Of Belgrade, Faculty Of Mining And Geology)
15:00 A Fully Coupled Hydrogeophysical Inversion Strategy for the Calibration of Groundwater Models Using Geophysical Data - A. Gonzalez Quiros ^{1*} , J. Comte ¹ ¹ University of Aberdeen	15:00 In-Situ Stresses and Pore Pressure Prediction of a Well in an Iranian Southwest Oil Field - M. Motahari ^{1*} , H. Ameri ¹ ¹ Petroleum University of Technology
15:10 Hydrological Variability in Crystalline Basement Aquifers – Insight from a First Hydrogeophysics Research Site in Nigeria - K.O. Doro ^{1*} , C.O. Adegboyega ² , A.P. Aizebeokhai ³ , M.A. Oladunjoye ² ¹ Department of Environmental Sciences, University of Toledo; ² Department of Geology, University of Ibadan; ³ Department of Physics, Covenant University	15:10 Multiple Method Monitoring in a Declining Norway Spruce Forest: Challenge for Electrical Resistivity Tomography - U. Noell ^{1*} , C. Neukum ¹ , H. Meesenburg ² , S. Stadler ¹ , P. Koeniger ¹ ¹ Federal Institute for Geosciences and Natural Resources (BGR); ² Northwest German Forest Research Institute
15:20 The Added Value of Combining VES and TEM Data Focusing on Macro-Anisotropy - J.A. Meekes ^{1*} , J. Gunnink ¹ ¹ TNO	15:20 A Geophysical Study at an Anthropogenic Created Coastal Area of Thorikos, Attica, Greece - S. Karizonis ^{1*} , G. Apostolopoulos ¹ , G. Amolochitis ¹ ¹ National Technical University of Athens
15:30 Geochemistry of Soda-Type Groundwater in the Torey Lakes Region (Russia): Differences between Catchment Area and Beyond - V. Drebot ^{1,2*} ¹ Tomsk Branch of the Trofimuk Institute of Petroleum Geology and Geophysics in the Siberian Branch of the Russian Academy of Sciences; ² Tomsk Polytechnic University	15:30 Effect of Data Normalization on Neural Networks for the Forward Modelling of Transient Electromagnetic Data - M.R. Asifi ^{1*} , T.S. Bording ² , A.S. Barfod ¹ , E. Auken ² , J.J. Larsen ¹ ¹ Department of Engineering, Aarhus University; ² HydroGeophysics Group (HGG), Department of Geoscience, Aarhus University

4 TH APPLIED SHALLOW MARINE GEOPHYSICS CONFERENCE		3 RD CONFERENCE ON GEOPHYSICS FOR MINERAL EXPLORATION AND MINING	
TRACK 3		TRACK 4	
Advanced Processing and Case Studies Session Chairs: M. Vanneste (Norwegian Geotechnical Institute), N.B. Soerenes (Equinor)		Seismic Methods in Mineral Exploration I Session Chair: A. Malehmir (Uppsala University)	
11:30	A Comparison of HR2D and 3D Seismic Anomalies by Frequency Dependent AVO Analysis - F. Buckley ^{1*} , Ø. Tysse ² ¹ Lloyd's Register; ² OMV (Norge) A/S	11:30	Mineral Exploration with Active- and Passive-Source Seismic Interferometry: More Data for Less - D. Draganov ^{1*} ¹ TU Delft
11:40	Assessment of Imaging Approaches for Ultra-High Frequency Seismic Data in the Shallow Subsurface - S. Clay ^{1*} , T. Henstock ¹ , M. Vardy ² ¹ University Of Southampton; ² SAND Geophysics	11:40	Seismic Imaging of the Subsurface at the Malmberget Iron Ore Mine, Northern Sweden - C. Juhlin ^{1*} , E. Lundberg ¹ , B. Brodic ¹ , J. Juslenius ² , F. Ersholm ² , H. Van den Berg ² , N. Juhojuntti ³ , S. Buske ⁴ ¹ Uppsala University; ² LKAB Malmberget; ³ LKAB Kiruna; ⁴ TU Bergakademie Freiberg
11:50	Sub-Seafloor Object Detection through Dedicated Diffraction Imaging - S. Wenaus ^{1,2*} , N. Römer-Stange ^{1,2} , H. Keil ² , V. Spiess ² , B. Preu ¹ ¹ Fraunhofer IWES; ² University of Bremen	11:50	Combination of 3D Borehole Radar and Underground Reflection Seismic - A Case Study for In-Mine Exploration - T. Hupe ^{1*} , D. Orlovsky ¹ , U. Swoboda ¹ , M. Sniehotta ² ¹ DMT GmbH & Co.KG; ² BGE - Federal company for radioactive waste disposal
12:00	Geophysical Mapping of Coastal Landscape During the Last Glacial Cycle, NW Shelf Australia - A. Fogg ^{1*} , J. Dix ¹ , H. Farr ¹ ¹ University of Southampton	12:00	Data Reconstruction Using Seismic Interferometry Applied to Active-Source Data from the Ludvika Mines of Sweden - F. Balestrini ^{1*} , M. Sacchi ² , A. Malehmir ³ , P. Marsden ⁴ , R. Ghose ¹ , D. Draganov ¹ ¹ Delft University Of Technology; ² University of Alberta; ³ Uppsala University; ⁴ Nordic Iron Ore AB (NIO)
12:10	Marine Karst Environment Characterization Using Jointly Seismic Imaging, Marine ERT and Geotechnical Data - J. Flamme ^{1,2*} , P. Tarits ¹ , A. Lepot ² , R. Isorna ³ , M. Fabre ¹ ¹ European Institute for Marine Studies (IUEM); ² MAPPEM Geophysics SAS; ³ France Energies Marines	12:10	Data-Driven Weathering Layer Statics for Hardrock Imaging: Solutions Based on First-Breaks and Surface Waves - B. Brodic ^{1*} , M. Papadopoulos ² , L. Bräunig ³ , V. Socco ² , D. Draganov ⁴ , S. Buske ⁵ , A. Malehmir ¹ ¹ Uppsala University; ² Politecnico di Torino; ³ TU Bergakademie Freiberg; ⁴ Delft University of Technology
12:30 - 12:55	Happy NSG Hour		
Site Characterization and Imaging Session Chairs: S. Oakley (Fugro), C.F. Forsberg (Norwegian Geotechnical Institute)		Innovative EU-Funded Mineral Exploration Solutions Session Chair: G. Apostolopoulos (National Technical University of Athens)	
13:00	Using Migrated Dip-Angle Gathers for Boulder Detection in UHR Seismic Reflection Data - N. Ettrich ² , V. Tschannen ² , S. Wenaus ^{1*} ¹ Fraunhofer IWES; ² Fraunhofer ITWM	13:00	Subsurface Imaging Using Ambient Noise Surface Wave Tomography in Areas with Limited Surface Access - D. Hollis ^{1*} , S. Beaupretre ² , A. Kantsler ³ , J. Ong ⁴ , A. Mordret ² , J. McNutt ³ ¹ Sisprobe SAS; ² Sisprobe SAS; ³ Transform Exploration; ⁴ PT Gema Terra
13:10	Reconstruction of P-Wave Velocity Model through Geostatistical Inversion of Seismic Travel Time for Offshore Site Characterization - M. Moradi ^{1*} , Z. Medina-Cetina ¹ ¹ Texas A&M University	13:10	Smart Exploration: Stepping Up Innovative Geophysical Solutions for Mineral Exploration - A. Malehmir ^{1*} , P.G. Gisselø ² , V.L. Socco ³ , J. Carvalho ⁴ , P. Marsden ⁵ , A. Onar Verboon ⁶ , M. Loska ⁷ ¹ Uppsala University; ² SkyTEM Surveys; ³ Politecnico di Torino; ⁴ LNEG; ⁵ Nordic Iron Ore AB; ⁶ EAGE; ⁷ Proxis
13:20	Characterization of Shallow Gas in Coastal Environment Using Jointly Marine ERT and UHR Seismic Imaging - J. Flamme ^{1,2*} , P. Tarits ¹ , M. Fabre ¹ , G. Jouet ³ , A. Ehrhold ³ , A. Lepot ² , B. Marsset ³ ¹ European Institute for Marine Studies (IUEM); ² MAPPEM Geophysics SAS; ³ IFREMER	13:20	SIT4ME - Seismic Imaging for Mineral Exploration - J. Alcalde ^{1*} , R. Carbonell ¹ , A. Malehmir ² , A. Gil ² , S. Buske ³ , D. Orlovsky ⁴ , T. Hupe ⁴ , P. Ayarza ⁵ , Y. Martinez ⁵ , F. Tornos ⁶ ¹ ICTJA-CSIC; ² Uppsala University; ³ TU Bergakademie Freiberg; ⁴ DMT GmbH & Co; ⁵ University of Salamanca; ⁶ IGEO-CSIC
13:30	Acoustic Impedance Inversion of High Resolution Marine Seismic Data with Deep Neural Network - J.R. Dujardin ^{1*} , G. Sauvin ¹ , M. Vanneste ¹ ¹ NGI	13:30	Integrated Study of the Gerolekas Bauxite Mining Site Using Passive Geophysical Methods - K. Polychronopoulou ^{1,2*} , C. Orfanos ^{1,2} , K. Leontarakis ^{1,2} , G. Apostolopoulos ¹ , N. Martakis ² , C. Tzimopoulos ³ ¹ National Technical University of Athens; ² Seismotech S.A.; ³ DELPHI-DISTOMON S.A.
13:40	Interpolation of CPT Data Supported by 3D Seismic Data for Offshore Soil Characterization - A. Werpup Oguro ¹ , H. Keil ² , V. Spiess ² , B. Preu ¹ , V. Herwig ³ , S. Wenaus ¹ ¹ Fraunhofer IWES; ² University of Bremen; ³ Innogy SE	13:40	

3 RD CONFERENCE ON GEOPHYSICS FOR MINERAL EXPLORATION AND MINING	
TRACK 3	TRACK 4
	Geophysical Methods in Mining Engineering Session Chair: D. Draganov (Delft University of Technology)
14:00	14:00 Characterisation of the Tunnel-Channel Wave around a Coal Mine Roadway Based on Synthetic and Real Data - R. Czarny ^{1*} , M. Malinowski ¹ , M. Cwiękała ² , S. Olechowski ² , Z. Isakow ³ , P. Sierodzki ³ ¹ Institute of Geophysics, Polish Academy of Sciences; ² PGG KWK ROW Ruch Rydułtowy; ³ Centre of Technology Transfer EMAG
14:10	14:10 Microseismic Monitoring of Rockburst with an Ensemble Kalman Filter - A.C. Dip ^{1*} , B. Giroux ¹ , E. Gloaguen ¹ ¹ Institut National De La Recherche Scientifique
14:20	14:20 Sparse 3D Reflection Seismic Survey at Ludvika Mines of South-Central Sweden - M. Markovic Juhlin ^{1*} , A. Malehmir ¹ , S. Buske ² , E. Bäckström ³ , P. Marsden ³ , Ł. Sito ⁴ ¹ Uppsala University; ² TU Bergakademie Freiberg; ³ Nordic Iron Ore AB; ⁴ Geopartner Ltd.
14:30	14:30 Geophysical Investigation of Copper-Gold Deposit at Cukaru Peki, Serbia - D. Stojanovic Stepic ^{1*} , M. Urosevic ² ¹ Rakita Exploration; ² Curtin University
Rock Physics of Mineral Deposits & Electrical Methods in Mineral Exploration Session Chair: F. Dauti (Pisa University)	
15:10	15:10 Inversion of Borehole Gravity Data using GeoTk - N. Young ^{1*} , N. Foudil-Bey ¹ , M. Chemam ¹ , C. Nind ¹ ¹ Abitibi Geophysics
15:20	15:20 3D Inversion Modeling of Natural and Controlled Source EM in Complex Terrain - W. Soyer ^{1*} , R. Mackie ¹ , F. Miorelli ¹ , V. Schifano ² , S. Hallinan ^{1,3} ¹ CGG Geoscience; ² EOST; ³ University of Strasbourg
15:30	15:30 Deeper, Cheaper and Faster – Recent Advances in Long-Range Ground Penetrating Radar - J. Francke ^{1*} , J. Macnae ² ¹ Groundradar Inc; ² RMIT University
15:40	15:40 Machine Learning Applications and Examples for Natural Resources - N. Phillips ^{1*} , M. McMillan ¹ , J. Fohring ¹ , B. Peters ¹ , E. Haber ¹ ¹ Computational Geosciences Inc

26 TH EUROPEAN MEETING OF ENVIRONMENTAL AND ENGINEERING GEOPHYSICS	
TRACK 1	TRACK 2
Groundwater Exploration and Hydrogeophysics II Session Chair: G. Apostolopoulos (National Technical University of Athens)	Modelling, Inversion and Data-Processing in Near-Surface Geophysics III Session Chair: R. Persico (University Of Calabria)
10:30 Groundwater Level Monitoring Tests with Seismic Interferometry - M. Taruselli ^{1*} , A. Aguzzoli ² , L. Zanzi ¹ , D. Arosio ² ¹ Politecnico di Milano; ² Università degli Studi di Modena e Reggio Emilia	10:30 Probabilistic Inversion of Magnetic UXO Data: Implementing Prior UXO Data from the North Sea - M.D. Wigh ^{1*} , A. Døssing ¹ , T.M. Hansen ² ¹ Crustal Magnetism Technology and Research Group, DTU Space, Danish Technical University; ² Department of Geoscience, Aarhus University
10:40 Parallelized Hybrid Bloch Solver for Surface Nuclear Magnetic Resonance - M. Griffiths ^{1*} , D. Grombacher ² , J.J. Larsen ¹ ¹ Department of Engineering, Aarhus University; ² Department of Geoscience, Aarhus University	10:40 Data Adaptive GPR Diffraction Focusing Using Multi-Path Summation - H. Hamdan ^{1*} , N. Economou ² , A. Vafidis ² ¹ University of Sharjah, Petroleum Geosciences and Remote Sensing Program, Department of Applied Physics and Astronomy; ² Technical University of Crete, School of Mineral Resources Engineering, Applied Geophysics Lab
10:50 Incorporation of Unsaturated Zone Effects in Coupled Hydrogeophysical Modelling of Gravity Anomalies Caused by Pumping Tests - A. Gonzalez Quiros ^{1*} , J.P. Fernández Álvarez ² ¹ University of Aberdeen; ² University of Oviedo	10:50 Addressing the Inherent Issues with the Deconvolution of Vibroseis Seismic Data in View of Near-Surface Exploration - L. Gupta ^{1*} , N. Vedanti ² ¹ Indian Institute of Technology Roorkee; ² National Geophysical Research Institute
11:00 An ERT Time-Lapse Method to Characterize Water Movements in a Karstic Medium - C. Verdet ^{1*} , C. Sirieix ¹ , J. Riss ¹ , D. Lacanette ¹ ¹ University of Bordeaux, CNRS, Arts et Metiers Institute of Technology, Bordeaux INP, INRAE, I2M Bordeaux	11:00 Using Convolutional Neural Networks to Expedite the Hamiltonian Monte Carlo Inversion of Rayleigh Wave Dispersion Curves - A. Salusti ^{2*} , M. Aleardi ¹ ¹ University of Pisa; ² University of Florence
11:10 Multi-Sensor Acoustic Parameter Analysis System for Monitoring, Characterization and Evaluation of Drilling and Reservoir Stimulation Operations - S. Jamali ^{1*} , V. Wittig ¹ , R. Bracke ¹ ¹ Fraunhofer IEG	11:10 Model-Parameterization Scaling for Improving Accuracy of Seismic Tomography in Reconstructing Near-Surface Velocity Model - G. Chernyshov ^{1*} , A. Duchkov ¹ , I. Kulakov ¹ ¹ IPGG SB RAS
Geophysics in Engineering Geology and Geo-Technical Investigations Session Chair: J. Sugawara (Department Of Transport And Main Roads)	Geophysical Methods and Applications for Groundwater and Archaeological Studies Session Chair: F. Tuluca (Romanian Society of Applied Geophysics)
11:30 Combined Shear-Wave Seismic Reflection and H/V Spectral Ratio Surveys - A Case Study - B. Dietiker ^{1*} , A.J.-. Pugin ¹ , J.A. Hunter ¹ ¹ Geological Survey of Canada	11:30 Time Based Radar Signal Analysis Revealing Nature and Properties of Surface Scans - H. Kelderman ^{1*} , S.S. Kataeva ² , M. Klein Wolterink ¹ , N.A. Antonyuk ¹ , S.G. Kataev ³ ¹ Staal Technologies B.V.; ² Tomsk State University; ³ Tomsk State Pedagogical University
11:40 Combined Geophysical-Geotechnical Investigations Using Share Waves: A Case Study from Budapest - A.C. Kovács ^{1*} , Z. Szilágyi ² , J. Sticke ³ , M. Bauer ⁴ , R. Csabafi ⁴ , G. Bernáth ¹ ¹ Geo-Log Ltd; ² Geoplan Ltd; ³ Elgoscscar 2000 Ltd; ⁴ MBFSZ	11:40 Characterization of Shallow Sediments in an Urban Area from Inversion of P, SV and SH Arrivals - G. Böhm ¹ , F. Accaino ¹ , F. Meneghini ¹ , A. Schleifer ¹ , Ž. Nikoli ² ¹ OGS - Istituto Nazionale di Oceanografia e di Geofisica Sperimentale; ² Faculty of Civil Engineering and Architecture, University of Split
11:50 A Surface Wave Tomography Tool in Geotechnical Applications - A 3D Experiment at a Controlled Test Site - C. Orfanos ^{1*} , K. Leontarakis ¹ , G. Apostolopoulos ¹ ¹ National Technical University of Athens	11:50 Detection of Shallow-Buried Objects by the Ditmar-Yanovskaya Method of Surface-Wave Tomography - A. Ponomarenko ^{1,2*} , V. Polovkov ^{1,2} , A. Nikitin ² , I. Levin ¹ , D. Popov ² , B. Kashtan ¹ ¹ St Petersburg State University; ² LTD SPBU IMRC
12:00 Blind Testing Using Seismic Methods for Detecting Flaws in an Experimental Embankment Dam in Älvkarleby, Sweden - S. Salas-Romero ^{1*} , C. Juhlin ¹ , C. Bernstone ² ¹ Department of Earth Sciences, Uppsala University; ² Business Area Generation, Vattenfall AB	12:00 A Geophysical Study near the Temple of Olympian Zeus, Athens, for the Detection of Ancient Structures - G. Apostolopoulos ^{1*} , K. Leontarakis ¹ , C. Orfanos ¹ , G. Amolochitis ¹ , D. Karaiskos ¹ , S. Karizonis ¹ ¹ National Technical University of Athens
12:10	12:10 Laboratory Study of the Electrical Properties of Lutetian Limestones after Heating Up - B. Souffaché ¹ , A. Tabbagh ^{1*} ¹ Sorbonne Université
12:30 - 12:55	Lunch break

26 TH EUROPEAN MEETING OF ENVIRONMENTAL AND ENGINEERING GEOPHYSICS	
TRACK 1	TRACK 2
Posters: Environmental and Engineering Geophysics 1 Session Chair: E. Bloem (Norwegian Institute of Bioeconomy Research)	Posters: Environmental and Engineering Geophysics 2 Session Chair: B. Brodic (Uppsala University)
<p>13:00 Characteristic Pressure Spectrum Produced with a New Multi-Exponential Model Describing Quality Factor-Pressure Relationship - J. Somogyine Molnar^{1,2}, A. Abordan^{1,2*}, T.E. Dobroka^{2,3}, T. Ormos¹, M. Dobroka^{1,2} ¹University of Miskolc; ²MTA-ME Geoengineering Research Group; ³Research Institute of Applied Earth Science</p> <p>Full-Wave Modeling of Early Times in TDEM: Estimation of All Potential Coupling with Numerical FDTD Simulations - C. Finco^{1*}, C. Schamper¹, F. Rejiba², L.H. Cavalcante Fraga³ ¹Sorbonne Université - UMR 7619 Metis; ²Université de Rouen Normandie - UMR CNRS 6143 M2C; ³Envisol</p> <p>Romania CCS Demo Project-Monitoring Technologies for CO2 Injection and Storage - S. Anghel^{1*}, C.S. Sava¹, A. Dudu¹ ¹National Institute for Research and Development on Marine Geology and Geo-ecology – GeoEcoMar</p> <p>The Mapping of Submerged (Flooding) Lands by Geophysical Methods (Best of Monitoring 2019) - S. Vyzhva¹, V. Onyshchuk^{1*}, I. Onyshchuk¹, N. Reva¹, O. Shabaturova¹ ¹Taras Shevchenko National University of Kyiv</p> <p>The Deep Learning Approach for Pan Sharpening Aster SWIR Data (Best of Monitoring 2019) - I. Tishaiev¹, R. Okhrimchuk^{1*}, I. Tishaiev¹ ¹Taras Shevchenko National University of Kyiv</p> <p>The Structural Mapping of the Pletmos Basin through the Mesozoic and Cenozoic - A. Davids^{1*}, J. Salomo¹, C. Van Bloemenstein¹, L. Esterhuizen¹, R. Tshikovhi¹, S. Davids¹, T. Buthelezi¹ ¹Petroleum Agency SA</p>	<p>13:00 Levee Characterization by Means of Geophysical and Geotechnical Data Fusion: Improvements in Methodology - T. Dezert^{1*}, S. Palma Lopes¹, Y. Fargier² ¹Gustave Eiffel University; ²Gustave Eiffel University</p> <p>Defect Detection in Embankment Dams Using Artificial Neural Networks, Electrical Resistivity Tomography and Seepage Numerical Model - R. Norooz^{1*}, R. Ghiassi ¹University Of Tehran & Sweco AB</p> <p>Integrated Methodologies for Seismic Risk Mitigation in Gjirokastrë (Albania) - K. Skrame^{2*}, R. Muçi², M. Simionato¹, M.S. Benigni¹, I. Gaudiosi¹, M. Giuffè¹, M. Mancini¹, M. Moscatelli¹ ¹Institute Of Environmental Geology And Geoengineering Of The Italian National Research Council (cnr-igag), Roma, Italy; ²Polytechnic University of Tirana, Department of Applied Geology Environment and Geoinformatics, Faculty of Geology and Mining</p> <p>Multichannel Analysis of Surface Waves (MASW) to Characterize of Fault Zone in Alhama de Murcia Fault - H. Handoyo^{1,2*}, J. Alcalde¹, D. Martí³, J.J. Martínez-Díaz⁴, T. Teixidó⁵, R. Carbonell¹ ¹Institute of Earth Sciences Jaume Almera (ICTJA – CSIC), Department of Earth's Structure and Dynamics, C/LLuís Solé i Sabarís s/n, 08028; ²Teknik Geofisika, Institut Teknologi Sumatera, Jalan Terusan Ryacudu Kecamatan Jati Agung, 35365; ³Lithica SCCL, Santa Coloma de Farners 17430; ⁴Universidad Complutense de Madrid, Avda. de Séneca, 2 Ciudad Universitaria 28040; ⁵Universidad de Granada, Calle La Paz 18, 52005</p> <p>Education for the Students through Extracurricular Activities Related to Petroleum Engineering and Geophysics - M. Vukić¹, M. Đuričić², S. Komatina², Đ. Surla^{2*} ¹AGES Serbia; ²Technical Faculty "Mihajlo Pupin"</p> <p>ERT Investigation for Assessment of Sealing Faults at Homorod Mud Volcano Area - F. Chitea^{1,2*}, H. Mitrofan², M. Constantin³, A. Tudorache³, I. Fikos⁴ ¹University of Bucharest; ²Institute of Geodynamics "Sabba S. Stefanescu" of Romanian Academy; ³"Emil Racoviță" Institute of Speleology, Romanian Academy; ⁴Exploration Geophysics Laboratory, Aristotle University of Thessaloniki</p>

3 RD CONFERENCE ON GEOPHYSICS FOR MINERAL EXPLORATION AND MINING	
TRACK 3	TRACK 4
Airborne Surveys Session Chair: Jean Legault (Geotech Ltd.)	New Developments in 3D Modelling & Best of SAGA Session Chairs: M.S. Malovichko (Skolkovo Institute of Science and Technology), N. Phillips (Computational Geosciences Inc)
10:30 Optimizing the SkyTEM Airborne System to 6.25 Hz Base Frequency Operation for Increased Depth of Penetration - P.G. Gisselø ^{1*} , N.S. Nyboe ¹ , E. Bäckström ² , P. Marsden ² ¹ SkyTEM Surveys ApS; ² Nordic Iron Ore AB	10:30 Application of Gramian and Focusing Structural Constraints to Joint Inversion of Gravity and Magnetic Data - M. Jorgensen ^{1,2*} , M. Zhdanov ^{1,2} ¹ Consortium for Electromagnetic Modeling and Inversion, University of Utah; ² TechnoImaging
10:40 Case Study of the Helitem2 System at 6.25 Hz from the Iberian Pyrite Belt - A. Smiarowski ^{1*} ¹ CGG	10:40 Three-Dimensional Transient Electromagnetic Modelling and Inversion Using the Octree-Based Vector Finite Element Method - L. Xiao ^{1*} , B. Zhang ¹ , G. Fiandaca ² , E. Auken ¹ ¹ Aarhus University; ² The university of Milan
10:50 Investigation of UAV Noise Reduction for Electromagnetic Induction Surveying - T. Bjerg ^{1*} , E. Lima Simões da Silva ¹ , A. Døssing ¹ ¹ Dtu Space	10:50 Near Surface Mapping of Parts of the Far Western Limb of the Bushveld Complex Using Geophysics - T. Nadan ^{1*} , M. Manzi ¹ , S. Scheiber-Enslin ¹ ¹ University of the Witwatersrand
11:00 A Multidisciplinary UAV- and Ground-Geophysical Mapping of Complex Mineralisations in an Inter-Tidal Coastal Zone, Brittany (France)Rev - A. Døssing ^{1*} , G. Martelet ² , T. Mack Rasmussen ³ , E. Gloaguen ² , E. Lima Simões da Silva ¹ , J. Linde ¹ ¹ DTU Space, Technical University of Denmark; ² French Geological Survey (BRGM); ³ Luleå Technical University	11:00 Reappraisal of Legacy Reflection Seismic Data for the Prospection of Iron Mineralisation - M. Westgate ^{1*} , M. Manzi ¹ , I. James ² , W. Harrison ¹ ¹ University of the Witwatersrand; ² HiSeis Pty Ltd
IP and Other Geophysical Surveys Session Chair: A. Smiarowski (CGG)	Seismic Methods in Mineral Exploration II Session Chair: T.J. Hupe (Ruhr University of Bochum)
11:30 Comparing Ground 3D DCIP and Airborne Inductive IP over the Hickey's Pond High Sulphidation Epithermal Target - B. Lo ⁴ , D. Clark ³ , J. Rudd ² , J. Legault ^{1*} , K. Kwan ¹ ¹ Geotech Ltd.; ² Dias Geophysical; ³ Bonavista Resources Corp.; ⁴ Consultant	11:30 Reflection Seismic Imaging in the Zinkgruvan Mining Area, Central Sweden - A. Gil ^{1*} , A. Malehmir ¹ , S. Buske ² , J. Alcalde ³ , P. Ayarza ⁴ , L. Lindskog ⁵ , B. Spicer ⁶ , R. Carbonell ³ , D. Orlovsky ⁷ , J. Carriedo ⁸ , A. Hagerud ⁵ ¹ Uppsala University; ² Technische Universität Bergakademie Freiberg; ³ Institute of Earth Sciences Jaume Almera (CSIC); ⁴ University of Salamanca; ⁵ Zinkgruvan Mining AB; ⁶ Lundin Mining Corporation; ⁷ DMT GmbH Co
11:40 Three-Dimensional Inversion of Distributed Array Spectral IP Data and Comparison with AEM-Derived Conductivity Model, Saudi Arabia - F. Alfouzan ² , A. Alotaibi ² , L. Cox ^{1*} , M. Zhdanov ^{1,3} ¹ TechnoImaging LLC; ² King Abdulaziz City for Science and Technology; ³ University of Utah	11:40 3D Prestack Depth Imaging of the Iron-Oxide Deposit in the Ludvika Mining Area (Central Sweden) - F. Hlousek ^{1*} , M. Malinowski ² , L. Bräunig ¹ , R. Kramer ¹ , S. Buske ¹ , A. Malehmir ³ , L. Sito ⁴ , E. Bäckström ⁵ , M. Schön ⁵ , P. Marsden ⁵ ¹ TU Bergakademie Freiberg; ² Institute of Geophysics, Polish Academy of Sciences; ³ Uppsala University; ⁴ Geopartner; ⁵ Nordic Iron Ore AB
11:50 Evolution of BHIP - N. Veillette ^{1*} , P. Coles ¹ , N. Younge ¹ ¹ Abitibi Geophysics	11:50 Increasing the effectiveness of 3D modeling visco-acoustic wave propagation with a solver based on contraction operator - E. Avdotin ² , N. Yavich ^{1,2*} , N. Khoohlov ² , M. Zhdanov ^{2,3} ¹ Skoltech; ² MIPT; ³ University of Utah
12:00 Robust Scanning of AEM Data for IP Effects - F. Dauti ^{1*} ¹ Pisa University	12:00 3D Velocity Model Building in Hardrock Environment Using FWI: A Case Study from Blöthberget Mine, Sweden - B. Singh ^{1*} , A. Górszczyk ^{1,2} , A. Malehmir ³ , F. Hlousek ⁴ , S. Buske ⁴ , Ł. Sito ⁵ , P. Marsden ⁶ ¹ Institute of Geophysics, Polish Academy of Sciences Warsaw; ² ISTerre, University Grenoble Alpes; ³ Uppsala University; ⁴ TU Bergakademie Freiberg; ⁵ Geopartner; ⁶ Nordic Iron Ore AB
12:10 Evaluation of Plant Roots Ability to Remove Lead and Zinc Mining Drainage Contamination by Geoelectric Surveys - H. Sarkheil ^{1,2*} , Y. Azimi ² ¹ Kharazmi University; ² College of Environment	12:10 Ambient Noise Rayleigh and Love Wave Tomography beneath the Sally Palladium Copper Deposit (Ontario, Canada) - A. Lavoué ^{1*} , N. Arndt ¹ , J. McBride ² , A. Mordret ¹ , F. Brenguier ³ , P. Boué ³ , R. Courbis ¹ , S. Beauprêtre ¹ , C. Beard ¹ , D. Hollis ¹ , R. Lynch ¹ ¹ Sisprobe; ² Generation Mining; ³ ISTerre
12:30 - 12:55	Lunch break

3 RD CONFERENCE ON GEOPHYSICS FOR MINERAL EXPLORATION AND MINING	
TRACK 3	TRACK 4
<p>Posters: Geophysics for Mineral Exploration and Mining 1 Session Chair: L. Cox (Technolmaging LLC)</p>	<p>Posters: Geophysics for Mineral Exploration and Mining 2 Session Chairs: A. Gil de la Iglesia (Uppsala University), S. Buske (TU Bergakademie Freiberg)</p>
<p>13:00 The Effectiveness of Pseudo-Gravity Transformation in Mineral Exploration: an Example from a Placer Magnetite Deposit - S.R. Mashhadi^{1*}, M. Safari² ¹Amirkabir University Of Technology; ²Sahand University of Technology</p> <p>A Bayesian Approach to the Gravity Interpretation Problem - D. Sampietro^{1*}, M. Capponi¹ ¹Geomatics Research & Development s.r.l.</p> <p>Noise Analysis of a Portable Aeromagnetic Surveying System Using a Hybrid UAV - J. Jirigalatu^{1*}, A. Døssing Andreassen¹, E. Lima Simões da Silva¹ ¹Technical University of Denmark</p> <p>Illumination Diagnosis for Retrieval of Reflections from Ambient-Noise Seismic Data in the Siilinjärvi Mining Site, Finland - M. Papadopoulou^{1*}, D. Draganov², E. Koivisto³, M. Savolainen⁴, L. Sito⁵, V. Socco¹ ¹Politecnico di Torino; ²TU Delft; ³University of Helsinki; ⁴Yara Suomi Oy; ⁵Geopartner s.p. z.o.o</p> <p>Geophysical Prospecting at Dalli Porphyry Gold-Copper Deposit Via Magnetic and IP/RS Data Inversion - M. Hajheidari^{1*}, K. Moshaghian¹, S.M. Abtahi Forooshani¹, H. Asadi Harooni^{1,2} ¹Isfahan University Of Technology; ²University of Western Australia</p> <p>A New 3D Geological Model for the Neves-Corvo Mine Region, Iberian Pyrite Belt, Portugal - J. Carvalho¹, P. Dias¹, C. Reveaux², C. Inverno¹, N. Pacheco³, J. Matos¹, A. Malehmir^{1*}, F. Marques¹, V. Araújo³, M.J. Batista¹, B. Spicer⁵, G.A. Donoso⁴, L. Albardeiro¹, I. Morais¹, E. Ramalho¹, A. Filipe¹, D. Oliveira¹ ¹Laboratório Nacional de Energia e Geologia; ²Emerson; ³Somincor (Lundin Mining); ⁴Uppsala University; ⁵Lundin Mining Corp.</p> <p>Constrained 3D Inversion of Airborne Magnetic Data Using Geological and Reflection Seismic Data- Example in Sweden - M. Bastani^{1,2*}, S. Luth¹, A. Malehmir², M. Sadeghi¹, P. Marsden³ ¹Geological Survey of Sweden; ²Dept. of Earth Sciences, Uppsala University; ³Nordic Iron Ore AB</p>	<p>13:00 A New 2D Seismic Survey and 3D Forward Modelling over the Lombador VMS Deposit, Portugal - G.A. Donoso^{1*}, A. Malehmir¹, B. Brodic¹, N. Pacheco², J. Carvalho³, V. Araujo² ¹Uppsala University; ²Somincor (Lundin Mining); ³LNEG</p> <p>Cooperative Inversion of Seismic and Gravity Data Using Weighted Structure-Based Constraints - M. Rashidifard^{1,3*}, J. Giraud^{1,3}, V. Ogarko^{1,2}, M. Jessell^{1,3}, M. Lindsay^{1,3} ¹Centre of Exploration Targeting (School of Earth Sciences), University of Western Australia; ²International Centre for Radio Astronomy Research (ICRAR), University of Western Australia; ³Mineral Exploration Cooperative Research Centre, School of Earth Sciences, University of Western Australia</p> <p>Seismic-Signal Distortion Analysis in Marine Profiling Data - N. Goreyavchev^{1*}, G. Mitrofanov¹, M. Tokarev² ¹Institute of Petroleum Geology and Geophysics; ²Moscow State University</p> <p>Magnetic and IP/RS Data Inversion for Gold Prospecting at Koh-e Lakht Epithermal Deposit, Central Iran - G. Janghorban¹, S.M. Abtahi Forooshani¹, H. Asadi Haroni^{1,2}, H. Sadeghisorkhani¹, K. Moshaghian^{1*} ¹Isfahan University of Technology; ²University of Western Australia</p> <p>Reflection Seismic Imaging for Mineral Exploration in the Sotiel-Coronada Area, Southwest Spain - Y. Martínez^{1,2*}, J. Alcalde¹, D. Martí⁷, P. Ayarza², M. Ruiz¹, I. Mazán¹, F. Tornos³, A. Malehmir⁴, A. Gil⁴, S. Buske⁵, D. Orłowsky⁶, R. Carbonell¹ ¹Institute of Earth Sciences Jaume Almera (ICTJA-CSIC); ²Salamanca University; ³Institute of Geosciences, CSIC-UCM; ⁴Uppsala University; ⁵Technische Universität Bergakademie Freiberg; ⁶DMT GmbH & Co; ⁷Lithica SCCL</p> <p>Complex Geophysical Investigation in Search of Chromite Deposits at Ljuboten Greenfield Site - E. Hornicka^{1*}, P. Targosz¹, M. Loska², M. Wojdyła¹ ¹Geopartner Ltd.; ²Proxis Ltd.</p> <p>Application of the Advanced Cross-Hole Seismic Tomography for Kimberlite Pipe Detection in Yakutsk Diamondiferous Province - S. Vakulenko¹, E. Goncharov², V. Ignatiev¹, A. Oshkin³, A. Shuvalov^{1*} ¹Geodevice; ²ALROSA; ³NEOGEN</p>
<p>14:00 - 14:45</p>	<p>Closing Session</p>

EAGE

CONFERENCE & EXHIBITION

NEAR SURFACE GEOSCIENCE'21

29 AUGUST - 2 SEPTEMBER 2021 | BORDEAUX, FRANCE

JOIN THE BRIGHT MINDS OF THE NEAR-SURFACE INDUSTRY!

27th

European Meeting of
Environmental and
Engineering Geophysics

1st

Conference on Hydrogeophysics
Contribution to Exploration and Management
of Groundwater, Land-Use and Natural Hazards
under a Changing Climate

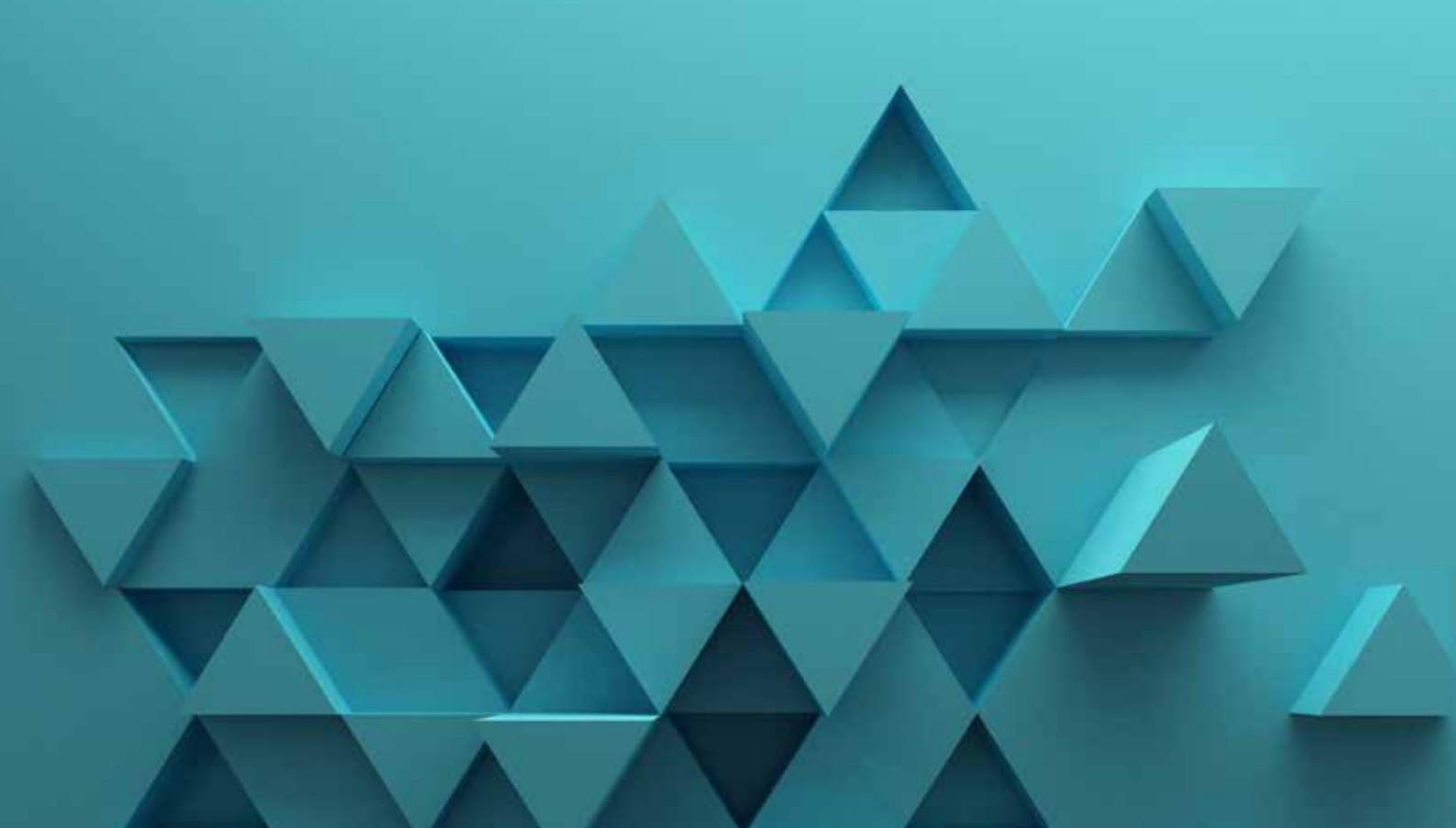
2nd

Conference on Geophysics
for Infrastructure Planning,
Monitoring and BIM

SUBMIT YOUR ABSTRACTS BEFORE 15 APRIL 2021!

WWW.NSG2021.ORG

#NSG2021   



SEE YOU ONLINE!

EUROPE OFFICE
+31 88 995 5055
EAGE@EAGE.ORG

RUSSIA & CIS OFFICE
+7 495 640 2008
MOSCOW@EAGE.ORG

MIDDLE EAST/AFRICA OFFICE
+971 4 369 3897
MIDDLE_EAST@EAGE.ORG

ASIA PACIFIC OFFICE
+60 3 272 201 40
ASIAPACIFIC@EAGE.ORG

LATIN AMERICA OFFICE
+57 1 7449566 EXT 116
AMERICAS@EAGE.ORG

HEAD OFFICE • PO BOX 59 • 3990 DB HOUTEN • THE NETHERLANDS • +31 88 995 5055 • EAGE@EAGE.ORG

WWW.NSG2020.ORG

#NSG2020  