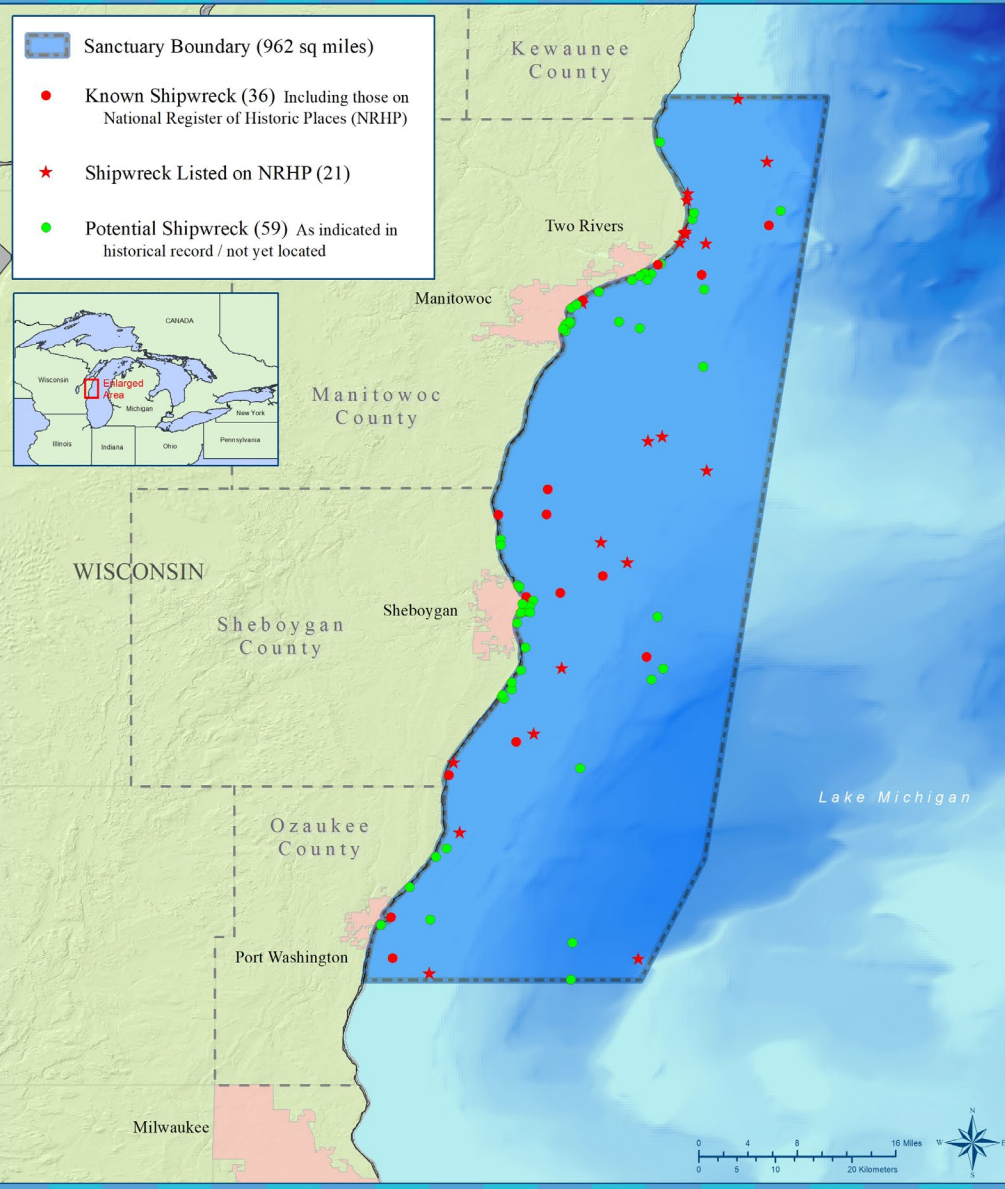


Destination Inspiration

# Wisconsin Shipwreck Coast National Marine Sanctuary

# Wisconsin Shipwreck Coast National Marine Sanctuary



# Patience

An hourglass is positioned on the right side of the slide, resting on a dark, textured rock. The background is a soft, hazy sunset or sunrise over a body of water, with the sun low on the horizon, creating a warm, golden glow. The hourglass is dark and has a glass bulb in the middle, with sand visible inside. The overall mood is one of quiet endurance and the passage of time.

- Began the Sanctuary designation process, 2008
- Submitted Sanctuary nomination in 2014
- October 2015, NOAA published a notice of intent to perform DEIS
- January 2016, NOAA held three public meetings
  - NOAA received 135 comments during that scoping period, the majority of which were strongly supportive of the concept of national marine sanctuary designation.
- January, 2017, NOAA published a DEIS, draft management plan (more public comment)
- March 2017 Public Meetings - Algoma, Manitowoc, Sheboygan, and Port Washington.
  - Approximately 400 people attended the meetings, with 75 people providing verbal comments.
- May 2021 NOAA published a final rule designating the sanctuary
- Designated June 23, 2021

# Partners

- NOAA
- WI Coastal Management
- Sea Grant
- Wisconsin Historical Society
- WI Department of Tourism
- WI Harbor Towns Association
- Port Washington
- Sheboygan
- Manitowoc
- Two Rivers



# Wisconsin Harbor Towns Association

- Began as part of Wisconsin Commercial Ports Association
  - Marketing WI Coastal Communities to Cruise Ships
  - Evolved to Marketing recreation and tourism along WI coasts
- Harbor Towns Today
  - 19 Communities
  - Lake Michigan & Superior
- Spun off the Wisconsin Marine Association
- Four WHTA communities are part of the Sanctuary Area



# Collaboration

- Shared vision
- Shared research
- Partnered to engage supporters
- Putting the end goal before individual goals

# What Could Have Sunk This

- Fighting Between Communities
- Me First Attitude
- Frustration at how slow things moved
- Sanctuary Opposition – Land Owner Issues



# We Are Not Done Yet

- What comes next
  - Sanctuary Infrastructure
    - Facilities study underway
      - Central Location vs Community based
  - Research
    - Mapping known wrecks
    - Discovering new wrecks
    - Weather Buoys
  - Sanctuary Marketing
    - Web/Digital
    - Events/Activities

