



Office of Emergency Communications Update



2019 Governors Conference on Emergency Management & Homeland Security

March 22, 2019



About the OEC

The Wisconsin Office of Emergency Communications was established within the Department of Military Affairs in October 2017 to serve as a resource to public safety stakeholders and coordination of public safety interoperable communications in Wisconsin.



OEC Duties

- Oversee the WISCOM System
- Oversee the NG911 and ESInet initiative in Wisconsin
- Assist first responders to achieve communications interoperability
- Oversee the public safety broadband/FirstNet initiative in Wisconsin



Mission

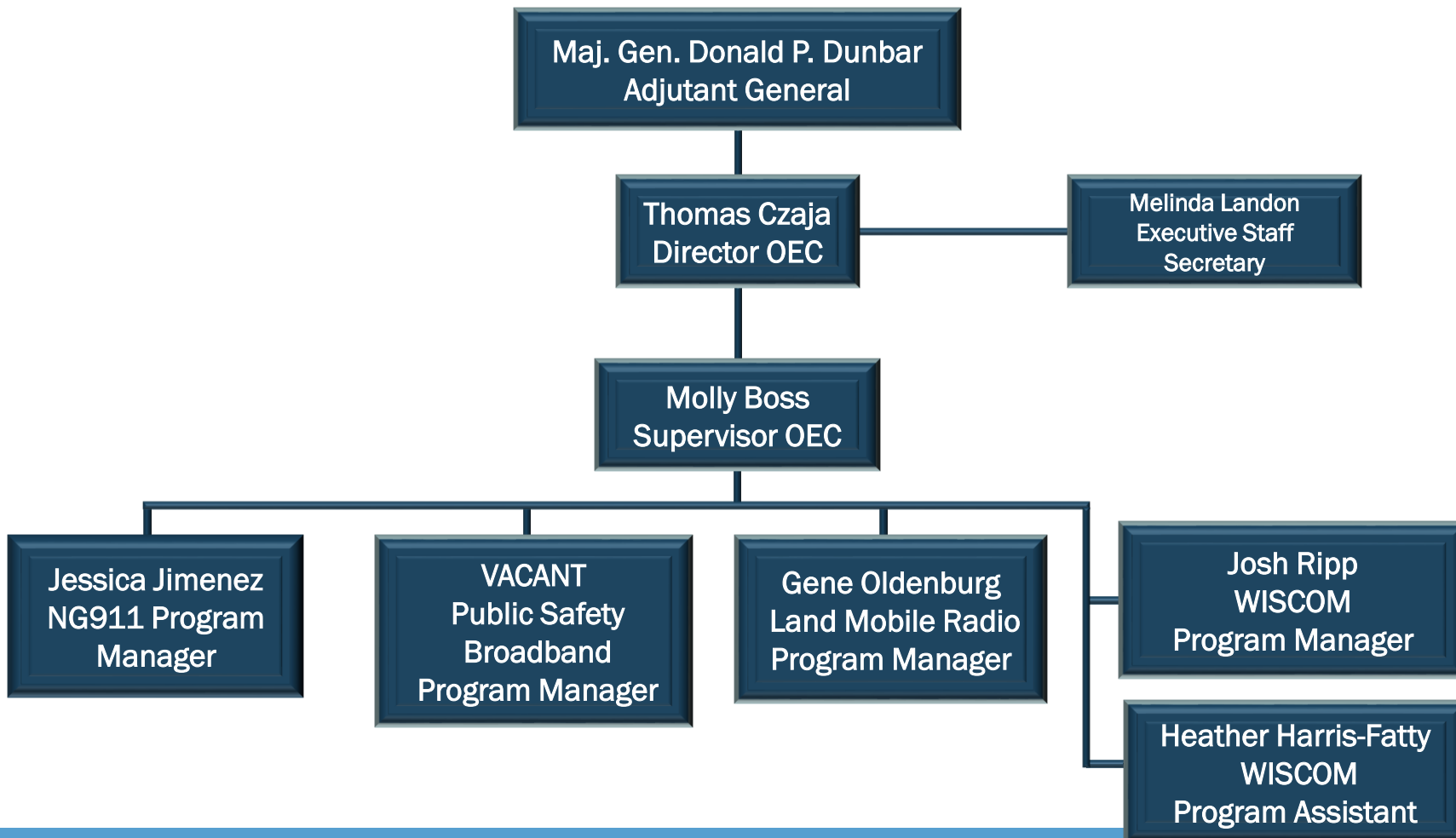
Enhance and maintain fiscally sustainable interoperable public safety communications systems

Vision

To provide strategic guidance for the highest level of reliable interoperable communications for public safety by maintaining an effective organizational structure to support proper planning, training, and sharing of resources

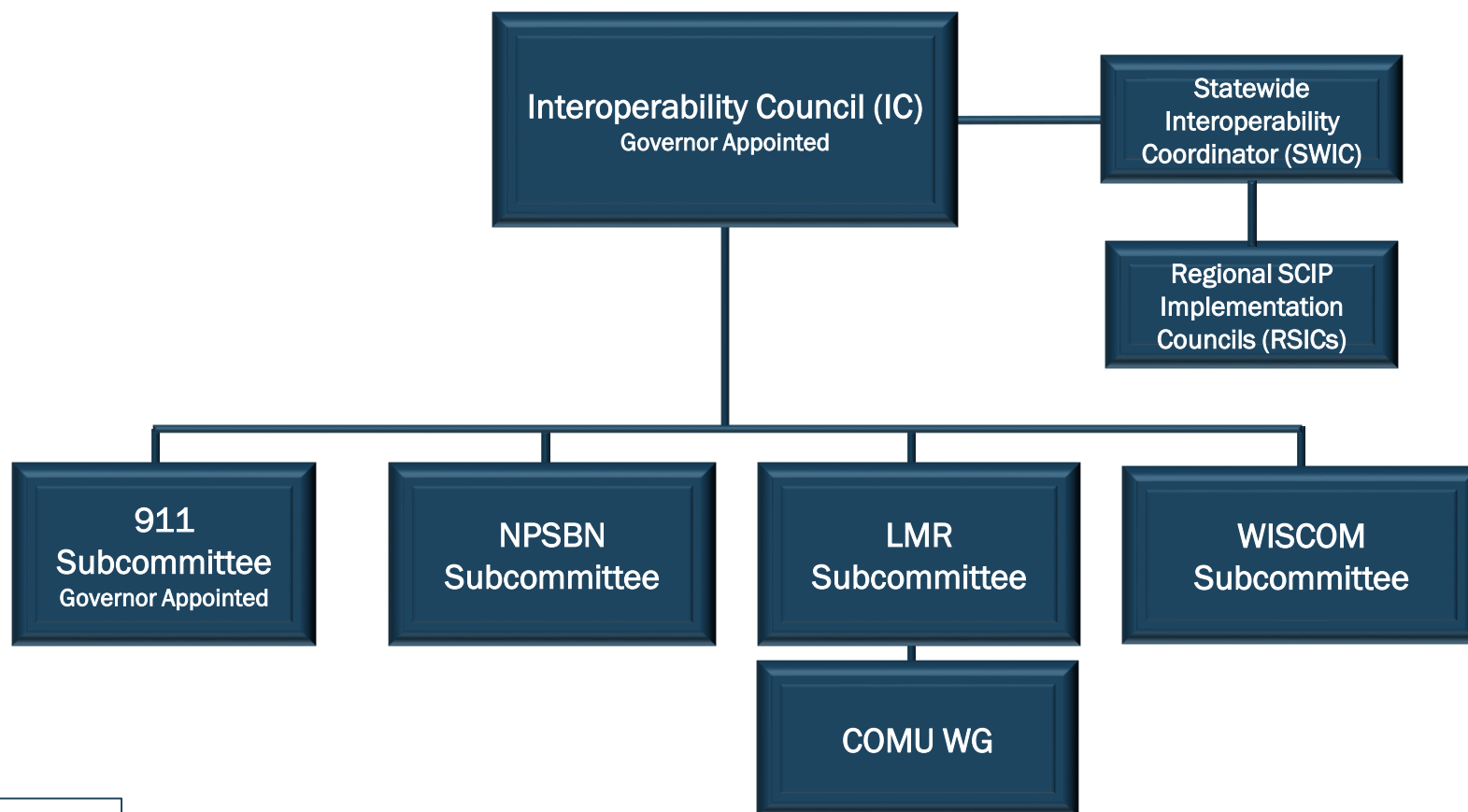


DMA/OEC Organization





Interoperability Council Organization





OEC Major Initiatives

- Issued an RFI for an ESInet system in Wisconsin.
Issued 6/22/18. Responses Received 8/14/18. Currently preparing an RFP
- Issue an RFP for a consultant to assist with the ESInet RFI/RFP.
911 Authority hired
- Issue an RFP for a Statewide Public Safety Interoperable Communications System.
Issued 10/02/18. Procurement process stopped in November 2019
- Prepare a report to the Governor and Legislature with recommendations for changing the statutory authority of the IC; Progress creating a Statewide Public Safety Interoperable Communications System; Obstacles to interoperability and recommendations for Executive or Legislative action to promote interoperability.
Report Completed and posted on OEC Website
<https://dma.wi.gov/DMA/oec>



OEC Major Initiatives

- Developed COMU Workgroup to oversee COML/COMT recognition process
- Entered into an MOU with U.S. DOI to utilize Federal Law Enforcement & Incident Response Channels
- OEC and WSP meet regularly to discuss issues of mutual concern



COMU Workgroup

The purpose of the COMU WG is:

- To ensure there is **cooperation, communication,** and **coordination** among those who are involved in interoperable communications
- Establish and maintain a viable and effective recognition system that enhances the professional credibility of the COMU positions



COMU WG Membership

- SMEs who possess a high level of operational and/or training experience in the COMU field
- Recommended by the SWIC and approved by the Interoperability Council
- Gene Oldenburg, (Chair) – DMA/OEC
- Todd Lindert (SME) – Jefferson County Sheriff's Office
- Brian Jansen (SME) – Waukesha PD
- Bill Tyler (SME) – SW IMT
- Rick Lange (SME) – Dane County EM
- Carl Guse (SME) – Ashippun Fire/Rescue
- Jim Westover (SME) – Wisconsin State Patrol
- Kevin Wernet (Training Officer) – DMA/WEM



COMU WG Duties

- Determine if an individual meets the requirements for recognition
- Review all documents to ensure position Trainee has met all the position recognition criteria
- Forward recommendation to the LMR Subcommittee
- Make recommendations for COMU training opportunities
- Develop continuing educational processes and programs
- Develop regional response/call-out guidelines and processes



NWS & WISCOM

- NWS will be using WISCOM RCALL to alert PSAPs of tornadoes and severe weather
- Currently beta tested in the SE region on RCALL 21. Will be formally announced in April 2019
- Expanding to the LaCrosse (RCALL 11) and Green Bay (RCALL 31) Offices
- PSAPs and field units can report real time observations to the NWS using WISCOM



ICS 205/217 Project

INCIDENT RADIO COMMUNICATIONS PLAN			Incident Name SIMCOM 2018 (FINAL)			Date/Time Prepared JAN 01 2018 0000			Operational Period Date/Time FEB 06 2018 0600 - FEB 08 2018 1500		
Line	Function	Channel Name/Trunked Radio System Talkgroup	Assignment	RX Freq N or W	RX Tone/NAC	TX Freq N or W	Tx Tone/NAC	Mode A, D or M	Remarks		
EXERCISE COMMAND & BRANCH OPERATIONS - DANE COUNTY											
2	COMMAND	VTAC36	Area Command	151.1375 N	156.7	159.4725 N	136.5	A	All Branches to ICP		
3											
4	COMMAND	VTAC13	Event Coord	158.7375 N	156.7	SIMPLEX	156.7	A	Fitchburg ICP/SIMCELL		
5	COMMAND	UTAC43D	Event Coord	453.8625 N	156.7	SIMPLEX	156.7	A			
6	COMMAND	8TAC93D	Event Coord	852.5125	156.7	SIMPLEX	156.7	A			
7	COMMAND	RTAC13	Event Coord	WISCOM TRS				D			
8											
9	COMMAND	Cell Phone	Event Coord	Cellular Phone for Incident Command Post (608.278.2980)					Chief Joe Pulvermacher		
10	COMMAND	Cell Phone	Event Coord	Cellular Phone for SIMCELL (608.448.0234 -MCC)					Todd Lindert (920.210.0000)		
11											
12	TACTICAL	FG BLUE	Branch A	154.2950 N	85.4	SIMPLEX	85.4	A	McKee - PRI		
13	TACTICAL	8TACBLUE	Branch A	852.4500	156.7	SIMPLEX	156.7	A	McKee - SEC		
14	TACTICAL	FGWHITE	Branch B	154.2800 N	74.4	SIMPLEX	74.4	A	McGraw - PRI		
15	TACTICAL	8TACWHITE	Branch B	851.9500	156.7	SIMPLEX	156.7	A	McGraw - SEC		
16	TACTICAL	FG GOLD	Branch C	153.8375 N	91.5	SIMPLEX	91.5	A	Oregon - PRI		
17	TACTICAL	8TACGOLD	Branch C	852.9500	156.7	SIMPLEX	156.7	A	Oregon - SEC		
18	TACTICAL	MARC4	Branch D	154.1300 N	82.5	SIMPLEX	82.5	A	Verona - PRI		
19	TACTICAL	8TACBLACK	Branch D	853.4500	156.7	SIMPLEX	156.7	A	Verona - SEC		
20									ICS 205 Page 2 of 4		
Prepared By (Communications Unit) James Westover, WSP COML (608) 512-3010					** Start/End with: "THIS IS AN EXERCISE" ** Identify by Department and Branch						
** PATCHED CHANNELS ARE COLOR-CODED **											

The convention calls for frequency lists to show four digits after the decimal place, followed by either an "N" or a "W", depending on whether the frequency is narrow or wide band. Mode refers to either "A" or "D" indicating analog or digital (e.g. Project 25) or "M" indicating mixed mode. All channels are shown as if programmed in a control station, mobile or portable radio. Repeater and base stations must be programmed with the Rx and Tx reversed.



Tom Czaja

Director

Wisconsin Office of Emergency
Communications

608-888-5500

Thomas.Czaja@Wisconsin.Gov



NextGen9-1-1 Program



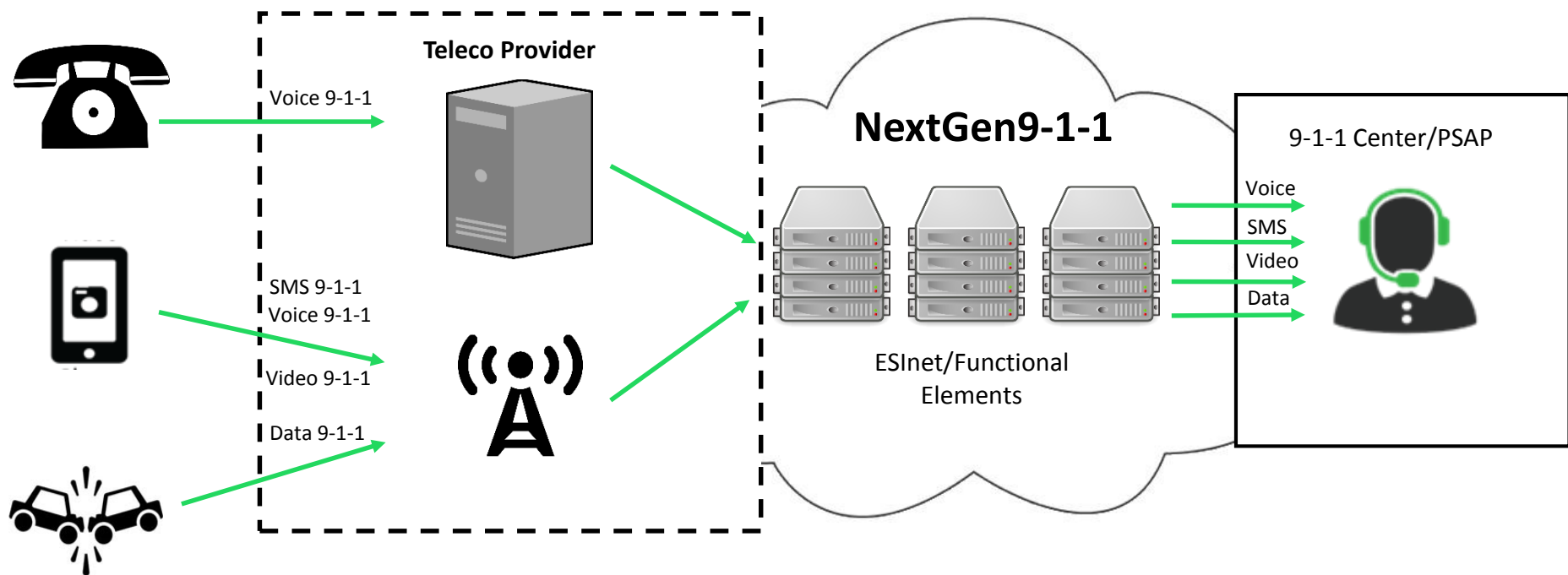
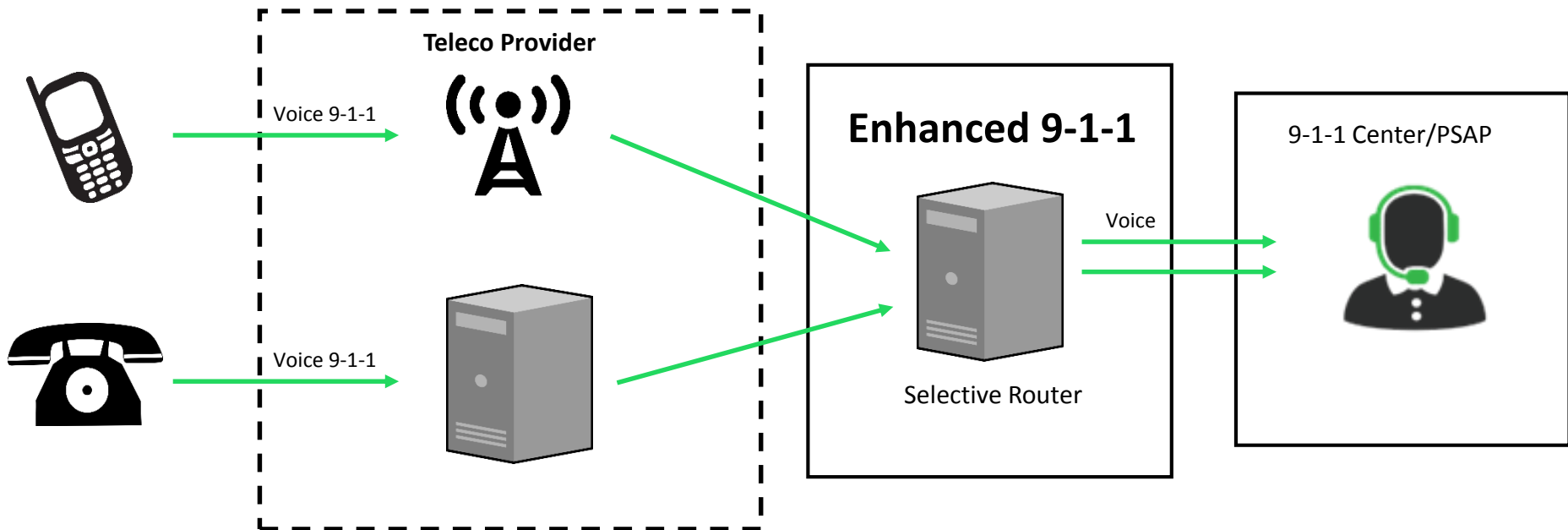


What is NextGen9-1-1?

NextGen9-1-1 (NG9-1-1) is an IP-based 9-1-1 system utilizing an emergency services IP network (ESInet) to replace the existing legacy/circuit-based systems.

NG9-1-1 is comprised of hardware and software to:

- Process all forms of emergency calls, including real-time text, images, video, and other data
- Deliver and transfer calls to the appropriate public safety answering point/9-1-1 Center
- Support coordinated incident response and management





Changes to 9-1-1 in WI

- 2017 WI Act 59 transferred interoperability programs to DMA and reorganized the 9-1-1 Subcommittee under the Interoperability Council
- Adjutant General appoints the Director of the Office Emergency Communications (OEC)
- Allocated \$6.7 million to plan and contract for a statewide ESInet



ESInet Funding

- Under Wis. Stat. 20.465(3)(qm), \$6.7 million annually has been allocated to DMA beginning in July 2018
- The funding can be used:
 - To make and administer contracts for the creation, operation, and maintenance of a statewide ESInet, and;
 - For the 9-1-1 Subcommittee to administer its duties under Wis. Stat. 256.35(3s)(d)



Major Impacts

- None foreseen in immediate future
- The State is building a statewide ESInet for the benefit of local PSAPs
 - Do not need to build one on their own, leading to potential cost savings and increased interoperability
- Joining statewide ESInet is voluntary but strongly encouraged
 - Timing
 - Operational and cost considerations
- Limited state oversight, currently restricted to ESInet buildout and operating as clearinghouse



9-1-1 System Assessment

- In consultation with the 9-1-1 Subcommittee, the 9-1-1 System Assessment will include:
 - Status of current Wisconsin 9-1-1 centers and a complete 9-1-1 center contact list
 - Current and other possible funding sources (local, state, and federal) for implementing a statewide ESInet and NG9-1-1
 - Current equipment and software, as well as changes needed for the implementation of the ESInet at the state and local levels (including CPE, servers, workstations, CAD, etc.)
- Survey to collect information was due March 1st
- Participation in the system assessment survey will be a requirement for federal 9-1-1 grant funds



Federal 9-1-1 Grant Program

- Federal 9-1-1 grant program under development by the National 9-1-1 Office
- Notice of Funding Opportunity released August 8th, final state application due April 2nd
- If Wisconsin is awarded grant funding, 90% of funds will be allocated to benefit local entities for end of life equipment
- Wisconsin may apply for an anticipated minimum of \$2.9 million with a 40% non-federal match requirement
- Timeline for grant award and subgrants unknown at this time



Next Steps

- Submit 9-1-1 Grant Program Application – April 2nd, 2019
- Requirements gathering for statewide ESInet procurement including conducting a statewide 9-1-1 system assessment
 - Final system assessment report due for release in June 2019
- ESInet Request for Proposal released within next calendar year



Questions?

Jessica Jimenez

NG9-1-1/Broadband Program Manager

Jessica.jimenez@Wisconsin.gov

608-888-5520



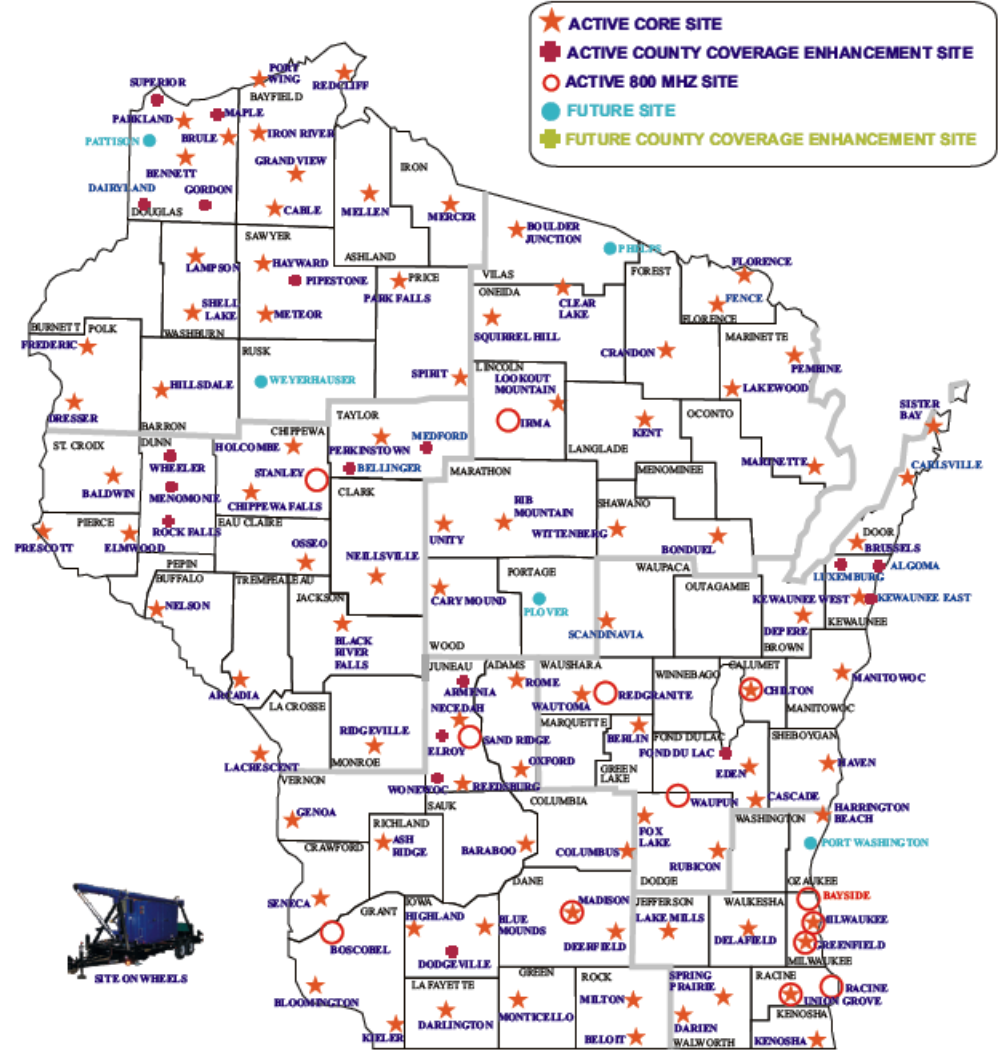
Statewide Radio System

WISCOM – Today

- Sites
- Coverage
- Interop Capabilities
- Dispatch Center Integration

WISCOM TOWER SITES

DECEMBER 2016



Updated by A. Bradley - 12/2016
 E:\WISCOM\Maps\WISCOM Active Sites



Statewide Radio System

WISCOM – Coverage - VHF

- VHF – Good Wide area coverage, requires fewer towers than 800 mhz overall
- Mobile Coverage – better than 95%, system now has 116 VHF sites, up from the original 80 sites (95% estimated mobile coverage).
- Portable Coverage with added towers hasn't been measured or estimated statewide



Statewide Radio System

WISCOM – Coverage – 800 mhz

- Centered around Dept of Corrections Facilities
- Locations in Chilton, Madison, Milwaukee and at Dept of Corrections and Dept of Health Services Locations
- No coverage “goal” in place, other than specific facilities coverage need



Statewide Radio System

WISCOM – Interop

- Interop Talkgroups
- Inter Sub-System Interface (ISSI)
- Dispatch Center Connections



Statewide Radio System

WISCOM – Interop Talkgroups

- Statewide, Regional and Local and Discipline specific plans
- Required to be programmed in **EVERY WISCOM RADIO, per the WISCOM Agreement.**

WISCOM Interoperability Talkgroups



Northwest Talkgroups

RCALL61NW
RTAC62
RTAC63
RTAC64

Northeast Talkgroups

RCALL41NE
RTAC42
RTAC43
RTAC44



West Central Talkgroups

RCALL51WC
RTAC52
RTAC53
RTAC54

East Central Talkgroups

RCALL31EC
RTAC32
RTAC33
RTAC34

Southwest Talkgroups

RCALL11SW
RTAC12
RTAC13
RTAC14

Southeast Talkgroups

RCALL21SE
RTAC22
RTAC23
RTAC24

WISCOM Statewide Talkgroups

SCALL1
STAC2
STAC3
STAC4
STAC5
STAC6
STAC7
STAC8

Discipline Specific TG's

LAW ENFORCEMENT

EPS 1
NTAC1
NTAC2
NTAC3

Fire/EMS

HAZMAT
COLLAPSE
MABAS 1
MABAS 2



Statewide Radio System

WISCOM – Inter Sub System Interface (ISSI)

- Direct Connection between radio systems
- Future connection to LTE based Push to Talk
- Capability or “Services” are specific to each vendor
- Allows dispatch consoles “foreign” talkgroups on their consoles



Statewide Radio System

WISCOM – Inter Sub System Interface (ISSI)

- This allows different users to communicate without delays inherent to radio gateways
- Also allows dispatch consoles to retain ability to “take over” talkgroups when needed
- Can be expensive, purchase required on both systems



Statewide Radio System

WISCOM – Inter Sub System Interface (ISSI) and Console Sub System Interface (CSSI)

- We have the ability today, to make 24 total connections
- We are using 5 ISSI connections currently,
 - 4 Local systems (Brown, Winnebago/Outagamie, Danecom and OASIS)
 - 1 State System (ARMER)



Statewide Radio System

Radio System RFP – Current Status

- RFP was put on hold by prior administration (along with 50+ other RFP's)
- Due to the spot we were at in the process, this cancelled the RFP
- We will need to start over completely.



Statewide Radio System

Radio System RFP – Current Status

- The Adjutant General is gathering information on options, to determine next steps
- Interoperability Council will be discussing possible recommendations more at a future meeting



Statewide Radio System

Radio System RFP – Needed Information in the future

- Band – VHF or 800 mhz
- Coverage requirements – Mobile, portable, percentages of coverage
- Capacity – How many channels are needed within sites/areas



Statewide Radio System

Radio System RFP – Needed Information

- Dispatch Center Interfaces
 - Desired Functionality
 - Ability to Patch?
 - Talk with multiple users
 - Carrying LTE PTT traffic (future)
 - Ability to dispatch other county's resources (from a NG 911 call transfer?)



Statewide Radio System

Radio System RFP – Needed Information

- Existing Center's equipment
- Dispatch Consoles (directly to the state system)
- Radio Gateway?
- ISSI?
- Other????



Statewide Radio System

Local Radio System Upgrades – How can I be ready for the new system?

- Specify ISSI/CSSI connectivity (Consoles/System)
- Talk with your neighboring Counties/Communities
- Ask for options from your consultant/radio system vendor
- Contact me for further info



Statewide Radio System

Radio System RFP – Possibly Needed Information

- Existing Center's equipment
- Dispatch Consoles (directly to the state system)
- Radio Gateway?
- ISSI/CSSI Capability?
- Subscriber capabilities in county/area



Questions?

General DMA Interoperability email:

InterOp@wisconsin.gov

Interoperability Web Site:

<https://dma.wi.gov/DMA/oec>