



WINFOCUS
World Interactive Network
Focused on Critical Ultrasound



FoCUS

THE WORKSHOP



Contact Us:
SSEM 2023 Secretariat
c/o International Conference Consultants Ltd.
Tel: (852) 2559 9973
Email: ssem2023@icc.com.hk

**To register,
please visit [SSEM website](https://www.ssem2023.com.hk).**

BASED ON THE "INTERNATIONAL EVIDENCE-BASED RECOMMENDATIONS FOR
FOCUSED CARDIAC ULTRASOUND (JASE 2014).
PART OF THE **WINFOCUS FoCUS® CURRICULUM** IN
ITS BRAND-NEW, UPDATED, BLENDED-LEARNING FORMAT

HONG KONG, Oct 27, 2023

Designed and Organized by WINFOCUS

WWW.WINFOCUS.ORG

prepares for
WINFOCUS FoCUS®
International
Certification

A 1-day Workshop on Focused Cardiac Ultrasound (FoCUS) that represents in-person component of WINFOCUS FoCUS® Course is based on WINFOCUS' 15 years of teaching experience around the globe. The FoCUS® course is specifically **designed for critical care and emergency physicians, anesthesiologists, acute cardiac care clinicians, and healthcare providers in general, dealing with cardiovascular emergencies.** The course is targeted at those who are new to cardiac ultrasound, and covers the use of limited Transthoracic Echocardiography (TTE) in the setting of cardiac arrest, peri-resuscitation and shock, and as a screening tool for the unstable patient in the ICU or any emergency setting. It might also be of interest to more experienced echocardiographers interested in making the ultrasound investigation of the critically ill patient more effective and ALS-compliant. The course (formerly known as Winfocus Basic Echo, WBE) has reached its 140th edition since 2008, and has been delivered in more than 50 countries worldwide. Its educational content conforms to the proceedings of the 1st International Consensus Conference on Focused Cardiac UltraSound (*Via G, Hussain A, et al. International Evidence-Based Recommendations for Focused Cardiac Ultrasound - J AM SOC ECHOCARDIOGRAPHY 2014*). As additional benefit, It prepares for WINFOCUS FoCUS® International Certification.

This brand new, up-to-date edition (2022) is based on a concept of evidence-based ultrasonography and a thorough description of the pathophysiology underpinning the taught sonographic signs and patterns. A clinical-sonographic integrated approach facilitates appropriate FoCUS implementation into real life clinical scenarios. The new **flipped classroom format** entails an e-Course as pre-requisite to the workshop [see Demo Lecture at: <https://youtu.be/GAYX9cP9Kj8>]. This content is made available also after the workshop for consolidating FoCUS competencies and skills. Six **hours of hands on training** will be provided during the 1 day workshop, with a guaranteed trainer to trainee ratio of no greater than 1 to 5. Language of formal lectures of the course and e-Learning will be **ENGLISH**.

Directors: Lee Ping Chung Gordon (HK), Gabriele Via (Lugano)

Faculty: Adi Osman (Malaysia), Tsui Chi Leung (HK), Cheung Lap Woon Lawrence (HK), Cheung Koon Ho Ralph (HK), Lee Ka Hing Herman (HK), Lee Ping Chung Gordon (HK)

Venue: Hong Kong Jockey Club Innovative Learning Centre
7/F, Hong Kong Academy of Medicine Jockey Club Building
99 Wong Chuck Hang Road, Aberdeen
Hong Kong

Registration: The registration fee is HKD4000 (SSEM participants) / HKD4500 (non-SSEM participants) and includes: 4 weeks pre-course e-Learning - 1 day workshop attendance (Oct 27, 2023) - 8 weeks post course e-Learning - a certificate of attendance which is pre-requisite to the WINFOCUS FoCUS international certification (for those who wish to apply for it), HKAM iCMECPD credits.

To register, please mail to sssem2023@icc.com.hk or phone to +852 2559 9973: you will be guided on registration and receive all infos for payment and course attendance.



Starting Sept 27: FoCUS e-Course[©]

Demo e-Lecture available at: <https://youtu.be/GAYX9cP9Kj8>

E-COURSE OUTLINE

1.	Intro to WINFOCUS FoCUS Course
2.	FoCUS: Definition, Goals and Targets of the Exam
3.	FoCUS: how to scan
4.	Knobology for FoCUS
5.	FoCUS Signs of Chronic Cardiac Disease
6.	FoCUS Signs of LV Systolic Dysfunction
7.	FoCUS Signs of RV Systolic Dysfunction
8.	FoCUS Assessment of Intravascular Fluid Status
9.	FoCUS Signs of Pericardial Effusion and Tamponade
10.	FoCUS Signs of Obvious Valvular Pathology, Intracardiac Masses
11.	FoCUS in Cardiac Arrest
12.	FoCUS in Shock



Oct 27: FoCUS Workshop

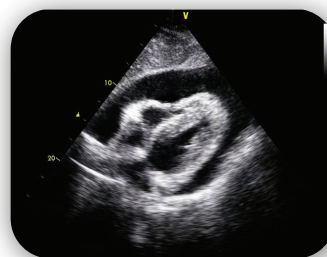
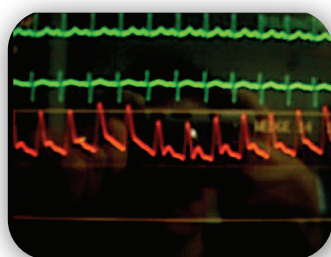
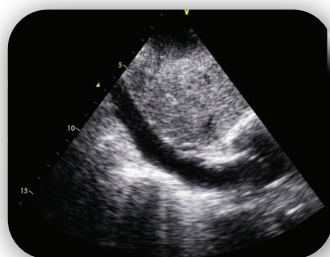
7.30	<i>Registration</i>	
7.50	Welcome, course instructions	
8.00	Wrap-up lecture on highlights from FoCUS e-Course	
9.30	Q&A on FoCUS e-Course Topics	
10.00	<i>Coffee break</i>	
10.20	HANDS ON TRAINING (HOT 1): Basic FoCUS views, Laptop training WORKSTATIONS with: healthy models, tutorial laptops	6
13.20	<i>Lunch</i>	

- 14.20 **HANDS ON TRAINING (HOT 2): Basic FoCUS views, Laptop training, ALS-Megacode, Shock Megacode - 6 WORKSTATIONS with: healthy models, tutorial laptops, ALS mannequin**
- 17.20 **Final Test**
- 17.50 *Final Remarks, Adjourn*



Continuing to Dec 8: FoCUS e-Course® rehearsal

E-Course available for further study and rehearsal until Dec 8, 2023



Endorsed by / Partnering with:

