



# Asset Management

Get the Best from your Assets



**Innovyze**<sup>®</sup>

Empowering water experts



# Meet your Targets

If you have water or wastewater infrastructure, how do you meet your environmental, financial, and customer satisfaction targets?

You need an asset management plan or program (AMP).  
It will empower you to:

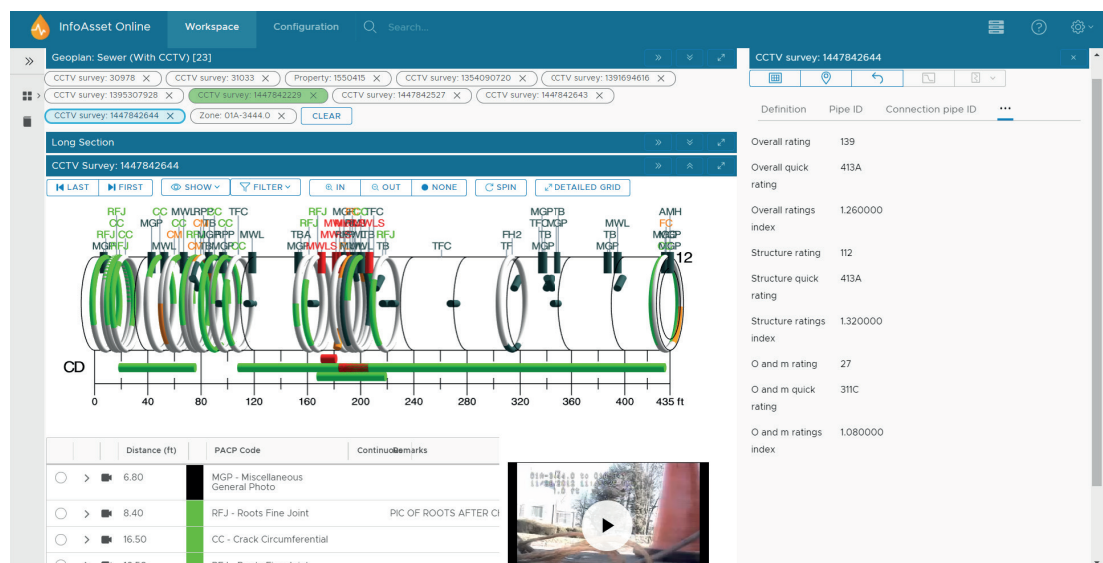
- Prioritize how you spend your budget
- Find and fix problems proactively
- Satisfy customers, stakeholders, and regulators
- Succeed with capital planning / capital improvement planning

It's surprisingly simple to get it all under control.

## Good asset management planning involves:

- Assembling information about your assets so you know what you own, where it is, its condition, and its performance
- Analyzing where there are problems, then identifying and prioritizing solutions (from doing nothing, to rehabilitating, to replacing assets)
- Carrying out repairs and updating the data
- Repeating these steps

Most water utilities either: have this data, but it's siloed in departments and computer systems across the organization and therefore difficult to access; or they're still busy collecting it.





# The Easy Way

The easy way to do it is with a software package that:

- Incorporates an asset centric information management system for all of your water and wastewater network data and information
- Provides an asset management plan (AMP) that records the location and condition of all your assets, that you can update daily as assets are added, removed, surveyed, or repaired
- Optimizes your capital improvement plans according to your budget and risk priorities
- Finds problems proactively, and prioritizes and schedules repairs
- Streamlines management of your field crews and makes their record-keeping easy and quick
- Enables people inside and outside your organization to view and interact with your data, so everyone's up to date with a single version of the truth



Over the years, we have developed analytics using InfoAsset data to quickly identify areas of concern and come up with solutions.

Infrastructure Asset Manager  
Western Virginia Water Authority, US

Visit our website to find out how the Authority made its asset information work for many different roles, from Capital Investment Plan Managers to Customer Service staff



## The Solution

### All Your Data in One Place

It's easiest to manage your pumps, valves, pipes and other water assets if you have all the data about them in one place.

Ideally the data should be asset-centric, enabling you to track the condition and performance of individual assets over their entire lifetime. No need to piece together the life history of an asset from its maintenance/survey records or repair tickets. Then you can visualize, query, and report on assets, in the ways that suit different roles in a water utility, local authority, or consultancy.

InfoAsset software from Innovyze provides this for you. **InfoAsset Manager** is for daily use, while **InfoAsset Planner** is designed for planning capital projects and capital improvement plans. **InfoAsset Mobile** is optimized for integrated working with field crews, and **InfoAsset Online** enables you to share information with people inside and outside your organization via a web browser.

### A Single Version of the Truth

**InfoAsset Manager** provides a central source of truth, brokering and compiling data and information about the asset, including:

- The physical characteristics and location of your assets
- The connectivity between your assets, inspections and surveys
- Incidents and customer complaints
- Work orders and tasks

You can easily see on a map where there are issues and problem hotspots. You simply zoom in to see the life history of each asset – you can even play relevant CCTV videos.

**InfoAsset Online** enables you to share the information with anyone you choose, and all they need is a browser. It's ideal for improving communications with people inside and outside your organization – including customers, partners, local authorities, and regulators.

## Collect It In The Field

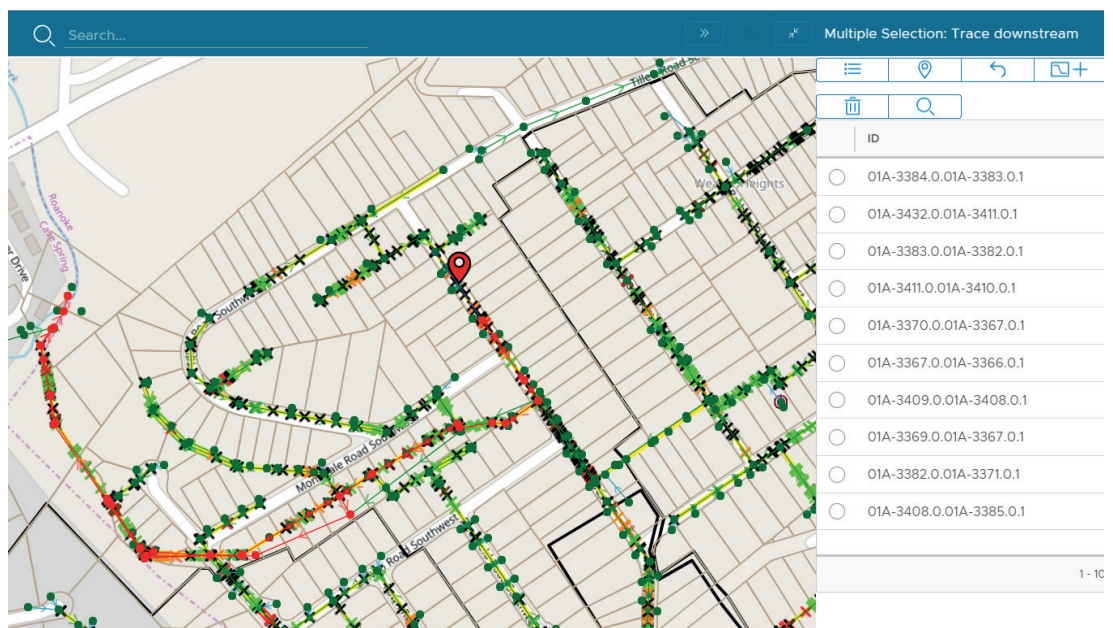
**InfoAsset Mobile** increases the efficiency of data collection significantly. Crews receive their schedules, do their work, and report back, all using the mobile application. There's no bottleneck of laborious paper reporting and data entry back at the office, with the risks of records getting lost and data being mis-keyed. The new data is available to all **InfoAsset Manager** users immediately.

InfoAsset Mobile also provides scheduling tools for crews, and enables office-based colleagues to monitor the progress of surveys and maintenance without interrupting the crews. It's a great way to provide simple form-based entry in the office.

## Analysis for Action

The powerful analytics in **InfoAsset Planner** help you identify:

- Which assets are critical, by developing a risk profile
- Which assets need interventions, in priority order
- How and where to best spend your budget
- Whether your surveying, cleaning, and flushing programs can be more efficient
- Whether your contractors are achieving their targets



# Asset Management Solutions



## InfoAsset Manager

For daily management of your assets

Stores, manages and analyzes information about your assets including surveys and repairs. You can see at a glance on a map where there are problem hotspots and create work orders.



## InfoAsset Planner

For planning capital works

Enables you to prioritize projects so you get the best from your budget and the time available. Generates work orders for crews.



## InfoAsset Online

For your co-workers and colleagues

Enables you to share information about your assets with anyone you choose, via a simple web interface.



## InfoAsset Mobile

For field work

Your crews receive their work schedules and record their work using the mobile application. They're in the loop, and there's no risk of losing or mis-keying records back at the office, removing a significant bottleneck.

# Training and Support



## Comprehensive Support from InfoCare

### Support and Maintenance from Innovyze

Our comprehensive customer support and software maintenance program offers expert assistance, accelerated learning, and timely and unlimited technical and engineering support.



## Expert Training

Get expert training and professional development from Innovyze's water engineering professionals.

They'll help you make the best use of your software, and share tips and use cases, in our wide range of training courses, live webinars and on-demand webinars.



## How to Choose Asset Management Software

When you're looking at asset management, check that the software you're considering:

- Is configured for water and wastewater
- Is biographical and asset-centric – it stores, displays, and analyzes the whole life history of your assets
- Empowers you to make proactive, prioritized decisions
- Gives you defensible plans
- Enables you to meet your performance, financial and environmental targets

We can help identify the best solution for your particular needs – just get in touch.



# Get in Touch

Our offices in the US, Australia, and the UK, plus our global network of partners, are here to help you get the most from your water systems.

## EMEA

+44 (0) 1635 582 555  
[sales-emea@innovyze.com](mailto:sales-emea@innovyze.com)

## AMERICAS

+1 888 554 5022  
[sales-america@innovyze.com](mailto:sales-america@innovyze.com)

## APAC

+61 (0) 7 5506 5700  
[sales-asiapac@innovyze.com](mailto:sales-asiapac@innovyze.com)

---

**Innovyze**<sup>®</sup>  
Empowering water experts

Innovyze empowers water professionals around the world to create, manage, and maintain water services. We are the global leader in water infrastructure data analytics software, providing enduring support for customer success.