



Online **ADB Sanitation Dialogue 2021**

ACCELERATING INCLUSIVE SANITATION

12-22 April 2021

CITYWIDE INCLUSIVE SANITATION (CWIS): A PUBLIC SERVICE APPROACH FOR EQUITABLE SANITATION SERVICE DELIVERY

Roshan Shrestha, Deputy Director

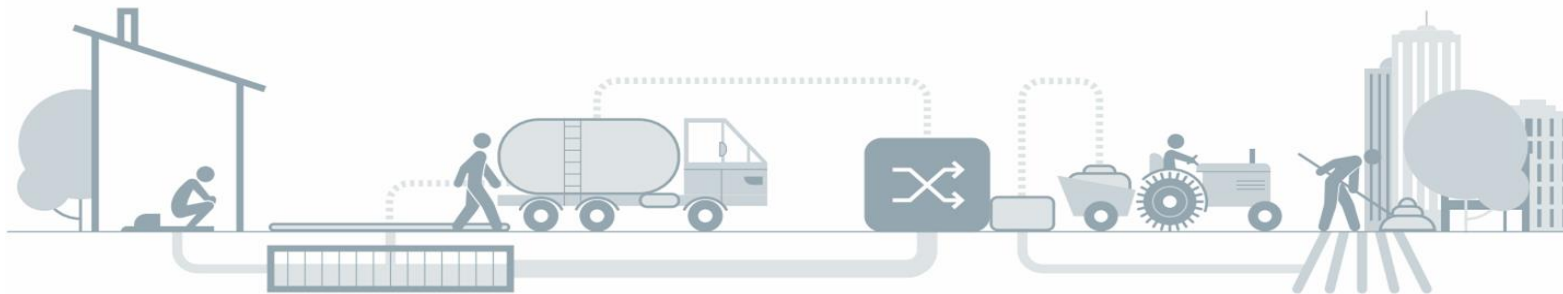
BILL & MELINDA GATES FOUNDATION

This is not an ADB material. The views expressed in this document are the views of the author/s and/or their organizations and do not necessarily reflect the views or policies of the Asian Development Bank or its Board of Governors, or the governments they represent. ADB does not guarantee the accuracy and/or completeness of the material's content, and accepts no responsibility for any direct or indirect consequence of their use or reliance, whether wholly or partially. Please feel free to contact the authors directly should you have queries.

BILL & MELINDA
GATES foundation

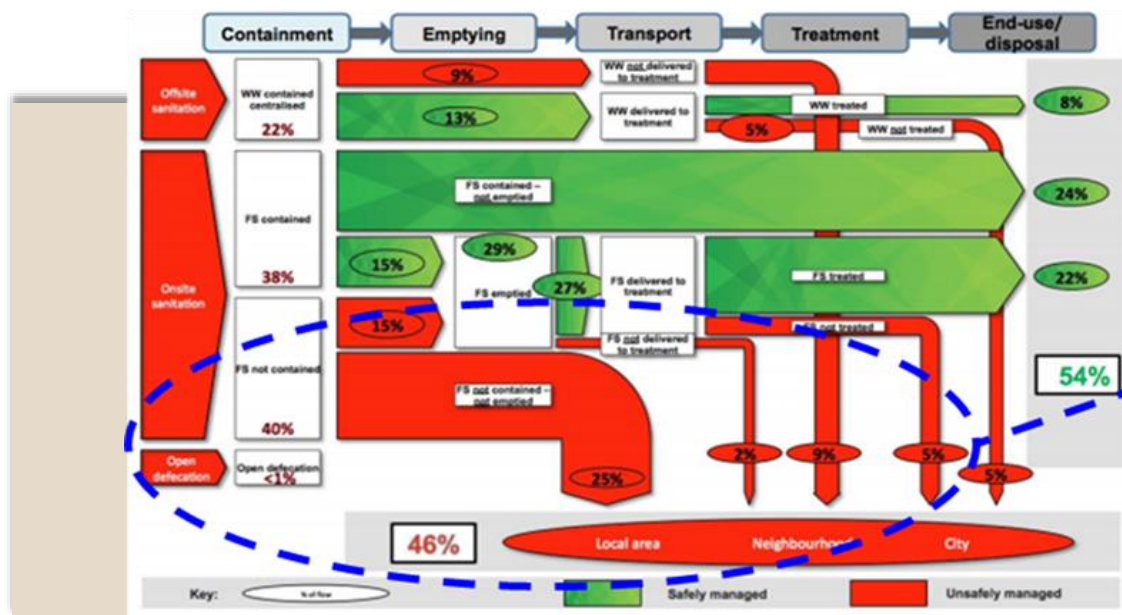


WHY ARE WE TALKING ABOUT CWIS?

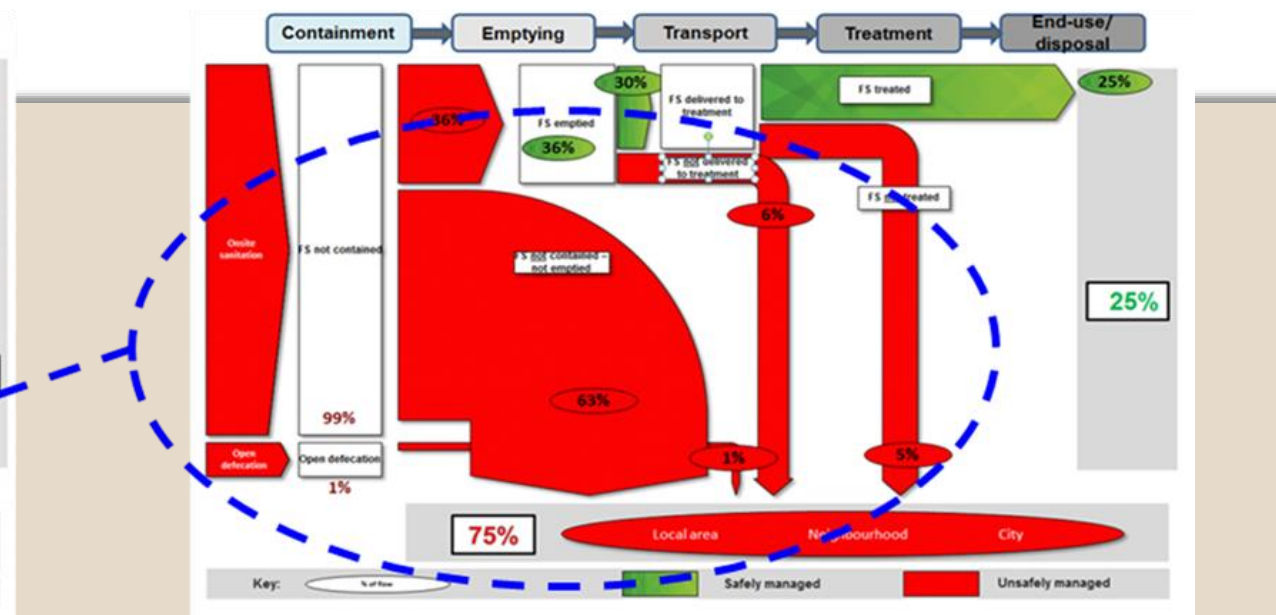


The current approaches for sanitation do not reflect & address the reality of low-income areas

CITYWIDE



LOW-INCOME AREAS



THE NEED FOR CWIS



PAST TRADITIONAL APPROACHES

- Master planning/ investment only for **centralized systems**
- Financed by **central gov't/loans**
- **Wealthy/business districts** prioritized
- **Limited coverage**
- **Sustainability challenges** for O&M
- **Resource recovery not considered**
- No **performance management**
- **On-site, small network not considered**

PRESENT NSS / FSM APPROACHES

- **Often standalone pilots**, not mainstream
- **NGO / pilot financed**
- FSM value chain/fecal sludge treatment plants
- Poor communities targeted but often missed
- **Informal businesses, NGOs independent from service authorities**
- Business models often **unable to scale**
- Limited **professional capacity**

THE FUTURE CITYWIDE INCLUSIVE SANITATION



CWIS focuses on promoting public service approaches to ensuring everyone in an urban area is served by **safe, equitable, and financially viable sanitation service systems**. This means systems are designed to **reach the poor and to ensure human waste is safely managed** along the whole sanitation service chain.

THE FUTURE: CITY WIDE INCLUSIVE SANITATION

We aim to achieve the following outcomes for sustainable changes in sanitation management:



EVERYONE BENEFITS from safe services and public investment equitably, with a focus on reaching the poorest



GENDER & SOCIAL EQUITY are designed into planning, management, monitoring



Human waste is **SAFELY MANAGED ALONG THE SANITATION CHAIN**, starting with containment



Authorities operate with a **CLEAR, INCLUSIVE MANDATE, PERFORMANCE TARGETS**, resources, and accountability



Authorities deploy **RANGE OF HARDWARE, FUNDING & BUSINESS MODELS** to meet goals



Comprehensive long-term planning **FOSTERS INNOVATION, PRO-POOR FINANCING**; informed by analysis of needs, resources



POLITICAL WILL & accountability incentivizes improvements in capacity, leadership, outcomes

GATES FOUNDATION CWIS FRAMEWORK: Promoting a Public Service Approach



EQUITY

Services reflect fairness in distribution and prioritization of service quality, prices, deployment of public finance/subsidies



SAFETY

Services safeguard customers, workers and communities from safety and health risks by reaching *everyone* with safe sanitation



SUSTAINABILITY

Services are reliably and continually delivered based on effective management of human, financial and natural resources

RESPONSIBILITY

Authority(s) execute a clear public mandate to ensure safe, equitable and sustainable, sanitation services for all

ACCOUNTABILITY

Authority's(ies') performance against mandate is monitored and managed with data, transparency, and incentives

RESOURCE PLANNING & MANAGEMENT

Resources—human, financial, natural, assets—are effectively managed to support execution of mandate across time/space



**CORE CWIS
OUTCOMES**

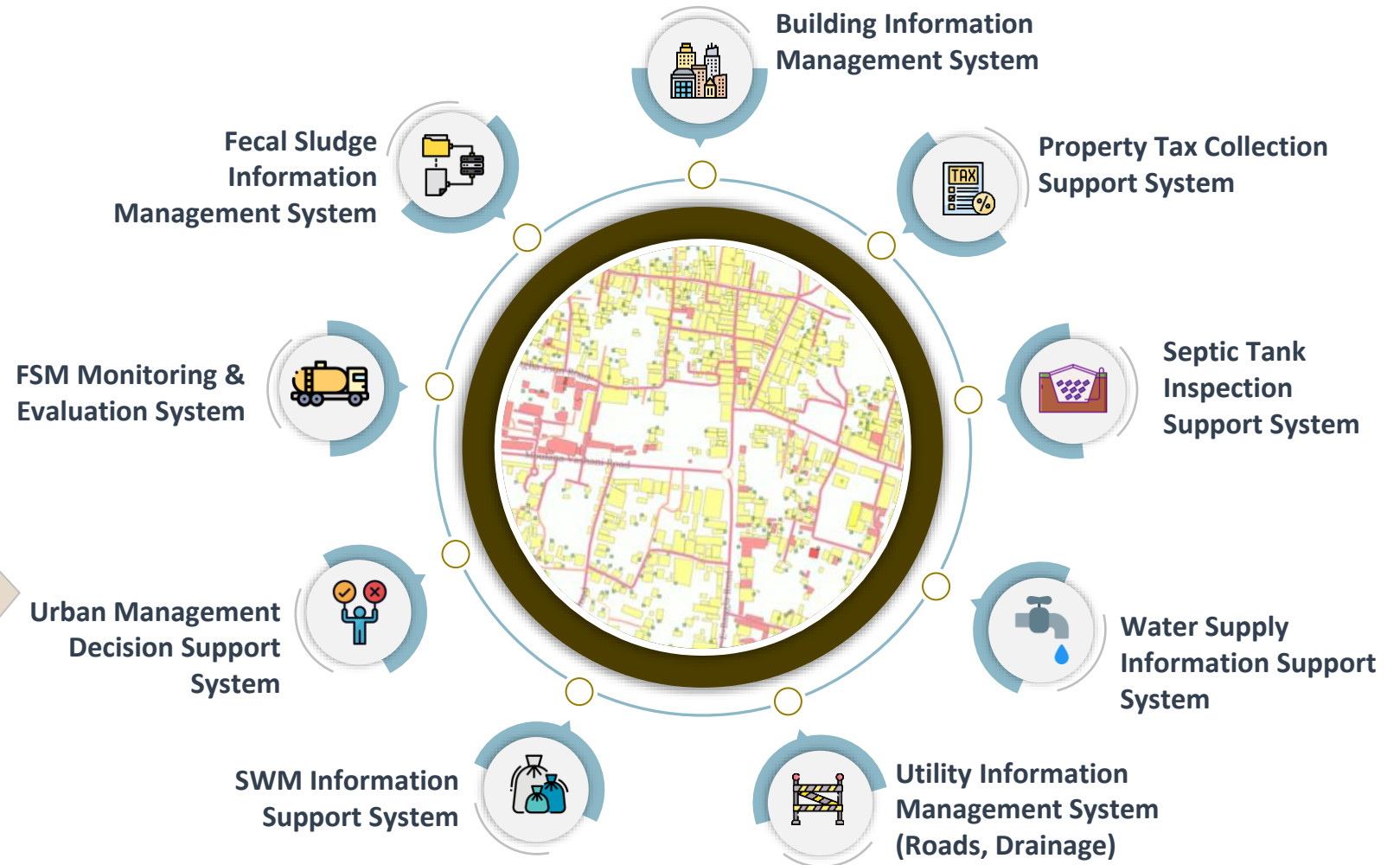


**CORE CWIS
FUNCTIONS**

INTEGRATED MUNICIPAL INFORMATION SYSTEM (IMIS) & CWIS

IMIS Landscape

- Municipal GIS-based database and CWIS baseline of the town
- Strategic sanitation planning and decision-making tools for authorities
- Service delivery management
- Municipality's 'regular business process mapping
- Real time monitoring and evaluation – tax payments, service delivery, KPIs
- Link to external databases – health, emergency response
- Plan infrastructure investment



ACCURACY, RELIABILITY, RELEVANCE AND TIMELINESS OF DATA FACILITATED

CATEGORIES OF CWIS ACTIVITIES AND USES OF IMIS

MANAGEMENT

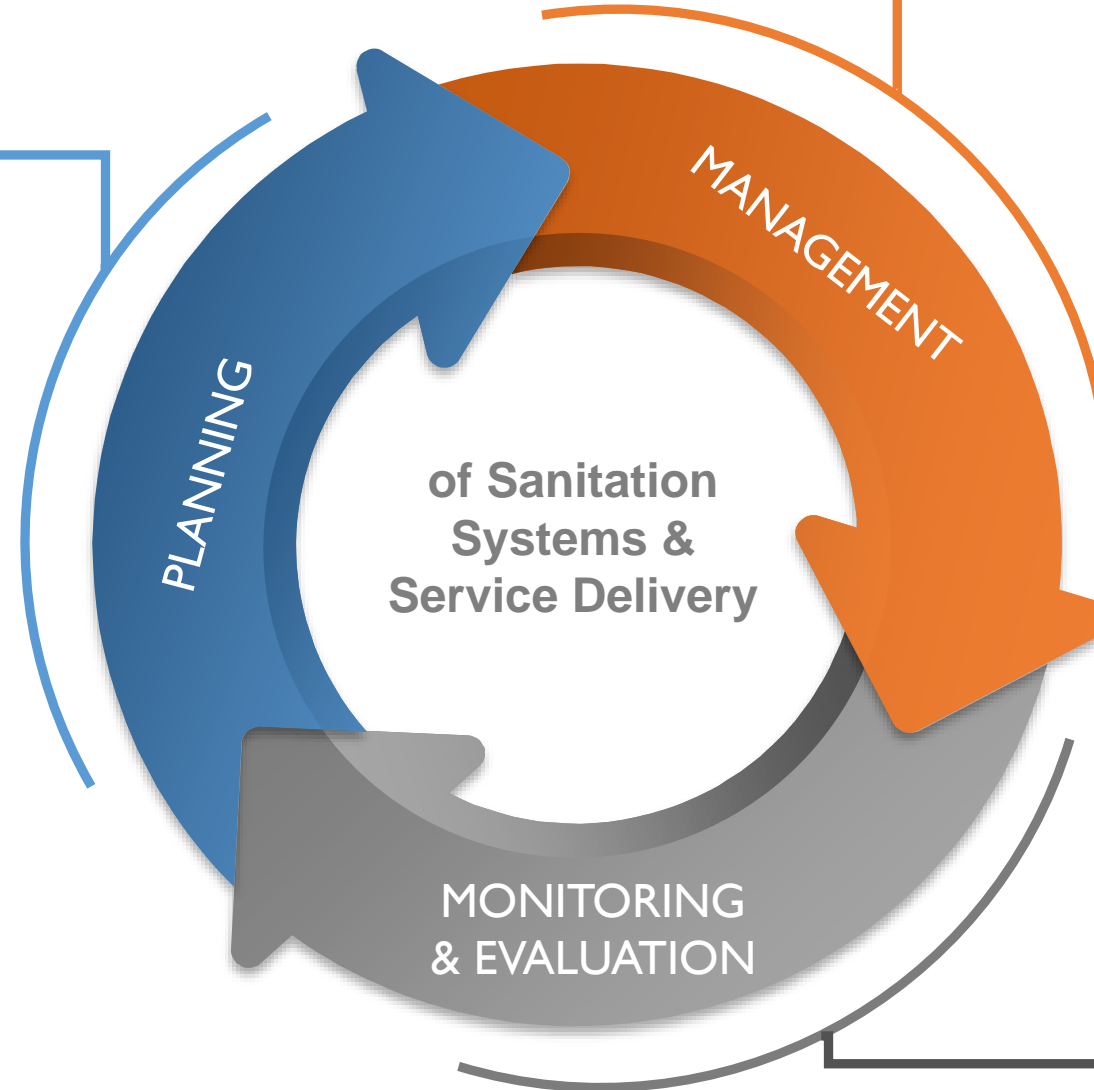
- a) safe management of sanitation infrastructure and services
- b) the distribution of public finances for the expansion of infrastructure and services;
- c) implementation of equitable costs and efficient cost recovery
- d) implementation of pro-poor, gender intentional and socially inclusive mandate;
- e) institutionalization of key performance indicators (KPIs)
- f) implement accountability measures as well as enforce regulations including incentives and penalties.

M&E

- a) the quality and distribution of services and infrastructure,
- b) service authority performance vis-à-vis the KPIs and targets;
- c) financial sustainability of service delivery and infrastructure,
- d) public health and environmental outcomes and
- e) pro-poor, gender intentional and socially inclusive targets.

PLANNING

- a) equitable access to safe, adequate & efficient infrastructure
- b) sustainable infrastructure, assets and services
- c) gender intentional and socially inclusive services and infrastructure
- d) fair and strategic pricing of services
- e) the use of public finances for the expansion of infrastructure and services and
- f) sanitation workers' rights, protections and safety nets



SANITATION PLANNING

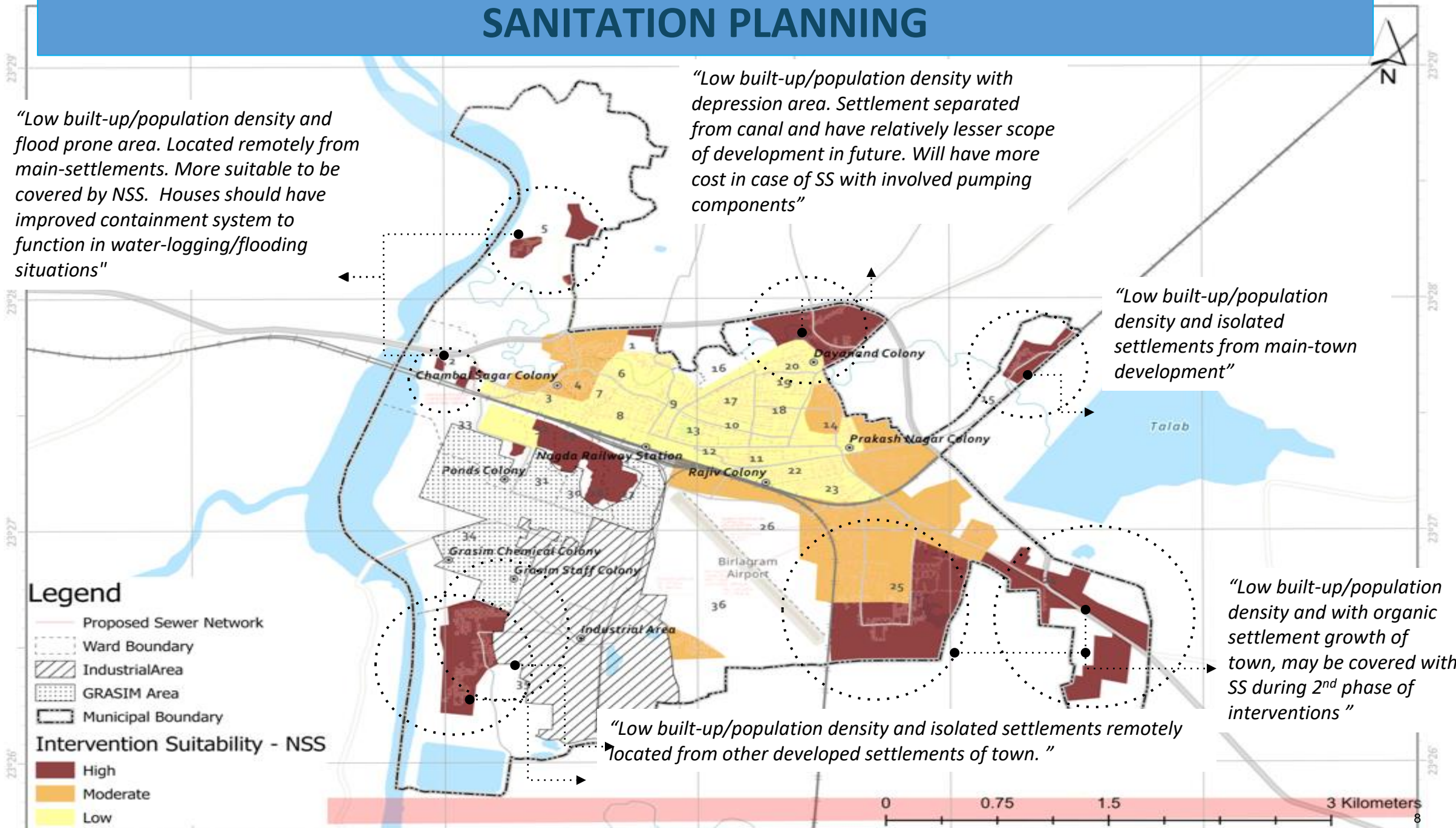
"Low built-up/population density and flood prone area. Located remotely from main-settlements. More suitable to be covered by NSS. Houses should have improved containment system to function in water-logging/flooding situations"

"Low built-up/population density with depression area. Settlement separated from canal and have relatively lesser scope of development in future. Will have more cost in case of SS with involved pumping components"

"Low built-up/population density and isolated settlements from main-town development"

"Low built-up/population density and with organic settlement growth of town, may be covered with SS during 2nd phase of interventions"

"Low built-up/population density and isolated settlements remotely located from other developed settlements of town."



Legend

- Proposed Sewer Network
- Ward Boundary
- Industrial Area
- GRASIM Area
- Municipal Boundary

Intervention Suitability - NSS

- High
- Moderate
- Low

0 0.75 1.5 3 Kilometers

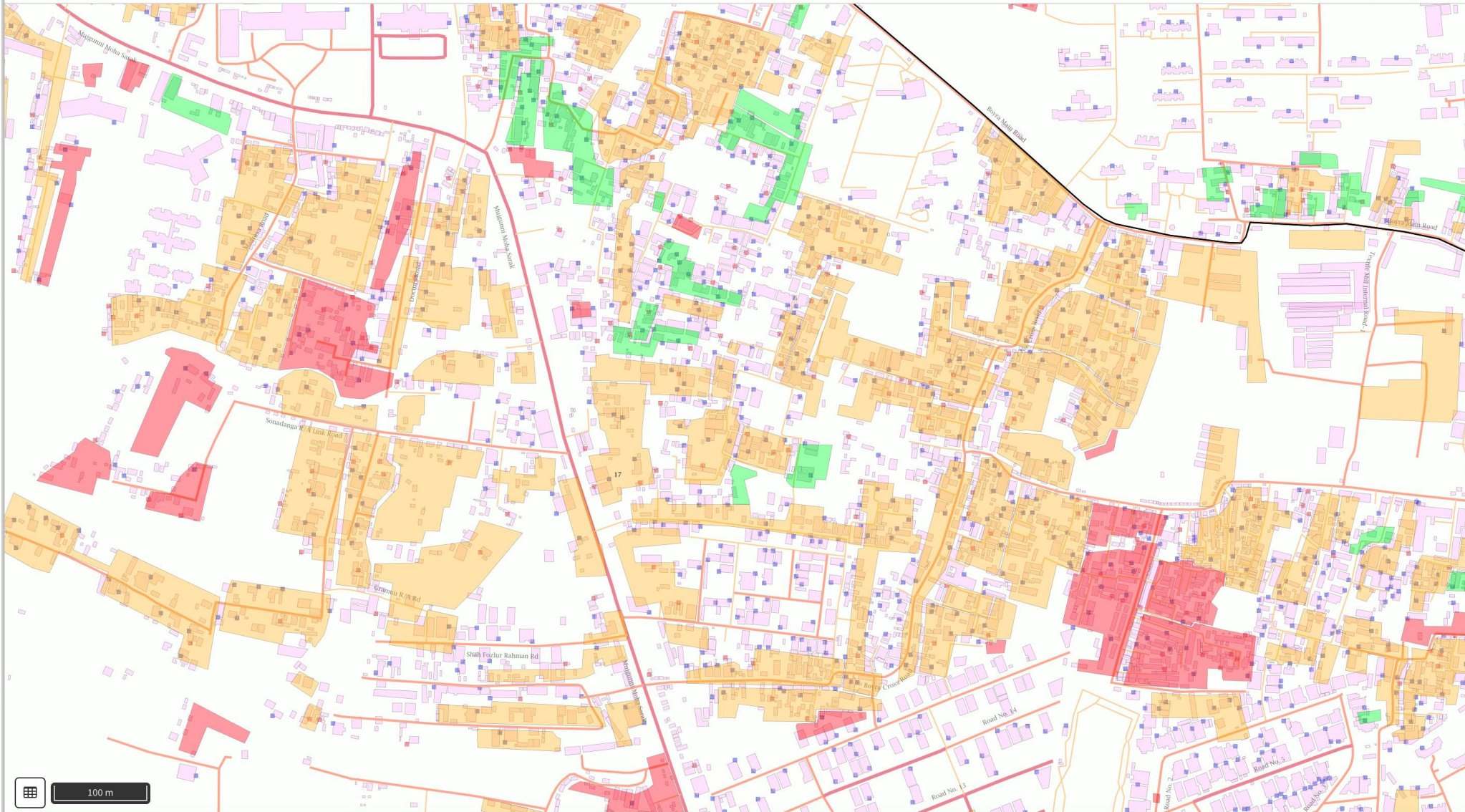


MAPPING THE POOR AND CONTAINMENT

Karan Bajracharya



BIN

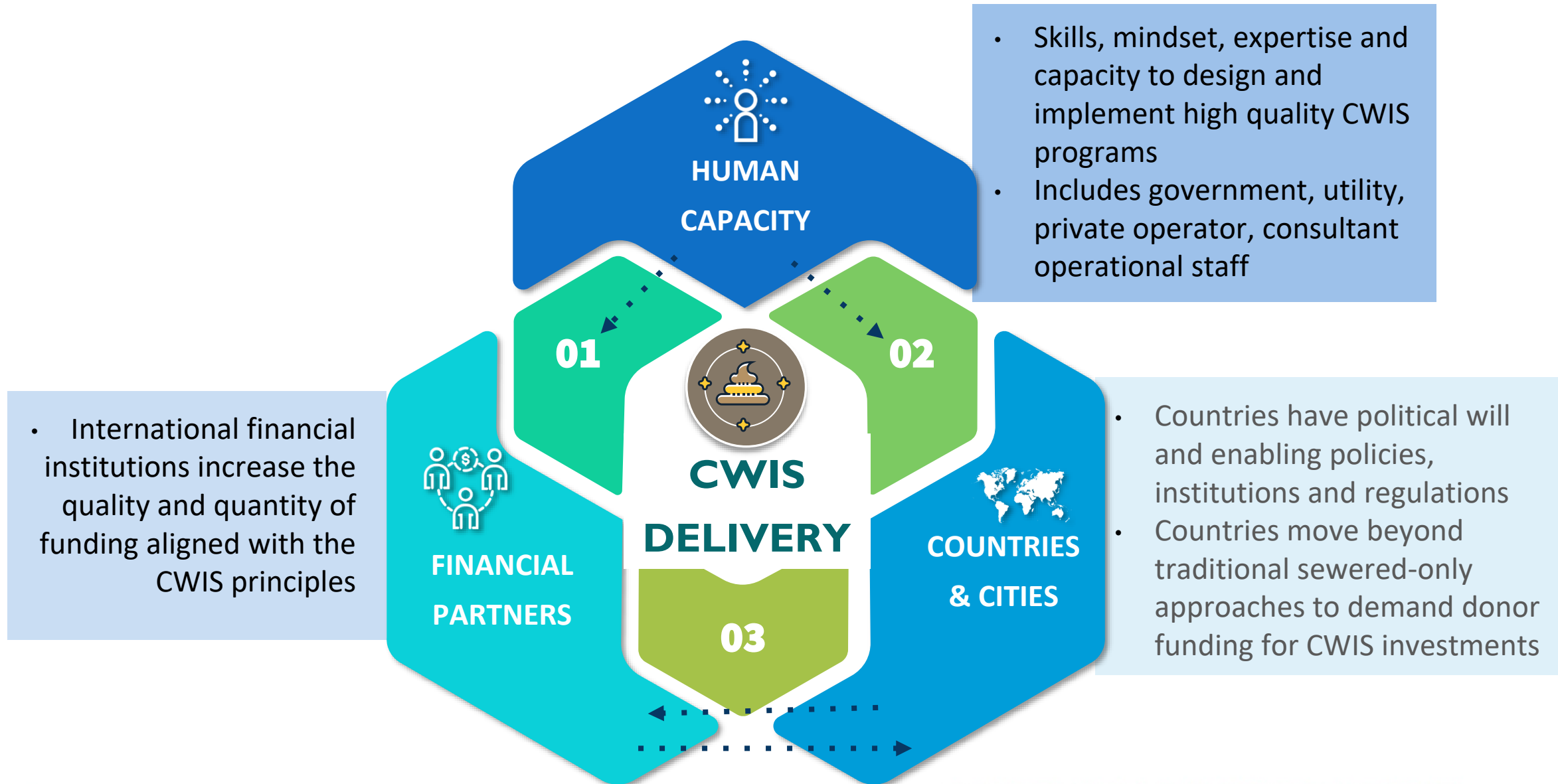


Layers Tools

- Containments**
 - Containment Type
 - Pit (0)
 - Septic Tank (0)
- Buildings**
 - None
- Treatment Plants
- Transfer Stations
- Roads**
 - Single Lane (<3) (0)
 - Single Lane (3-5) (0)
 - Double Lane (>5) (0)
- Drains
- Landmarks
- Public Services
- Tax Zone
- Water Bodies
- Water Logging Area
- Land Use
- Informal Settlements**
 - Poverty
 - Extreme Poor (0)
 - Very Poor (0)
 - Poor (0)
- Wards**
 - None
- Summarized Grids

100 m

WHAT WILL IT TAKE TO SCALE CWIS?



THANK YOU!



**CITYWIDE INCLUSIVE
SANITATION IN
BANGLADESH**

1-3 APRIL
KHULNA, BANGLADESH