

Smart Water Management



About Us

Nobel Systems is a state-of-the-art GIS provider and an industry leader in all aspects of geospatial services software engineering, system integration, and cloud spatial solutions (SaaS). With the growing demand for online content, cloud accessibility, and platform flexibility, Nobel uses highlevel technology in applying various management systems to cope with the new normal and addressing the need for a digital operations approach using GIS asset information through a userfriendly smart-map interface.

Innovative Solutions

Our team is exceptionally skilled in the development, maintenance, and integration of GIS programs and web/mobile-based solutions. Nobel Systems has been the go-to provider for applications such as our GeoViewer Online and Mobile, the GIS-based Work Order System, and IoT solutions, all in a one-stop shop that makes it very convenient for the water districts to monitor every aspect in a single dashboard. We have successfully delivered our services by consolidating GIS databases and utility management systems into a comprehensive enterprise system that can serve users and enable stakeholders to analyze management data and deliver through better health protocols.

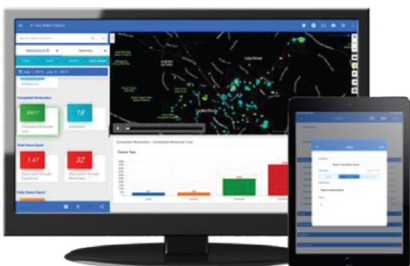
Target Market

Water districts in the Philippines and other parts of Asia and the Pacific requiring GIS services as an operation and asset management solution. They need a tool to help them locate, identify and analyze all the assets of the water district and have a single manageable interface where multi integrated systems can be operated in a single platform for a more efficient, effective and sophisticated approach to address the new normal.

Key Take-aways

- Improved water asset management system to monitor water level and condition assuring efficient delivery of clean and safe water.
- Minimizing water disruptions and having the ability to do demand forecasting by integrating IoT and AI to analyze their existing water system.
- Effective water operations management through timely distribution and remote monitoring of work considering staff safety especially during Covid times.
- Real-time updates, report generation, customer feedback and the ability to respond faster.

Improving Remote Monitoring of Water Utilities



Remote Monitoring of Water Utilities



Pavilion

26 October, 11:00–11:30 a.m.
(GMT +8, Manila time)

[Join the rapid solutions pitch session](#)
(passcode: #eMarket2)



To know more about our Smart Water Technology

BROCHURES

- [GEOVIEWER Online and Mobile](#)
- [Real-Time Work Management](#)
- [Nobel Systems- Background](#)
- [Pipeline Monitoring & Predictive Analysis](#)
- [Back Office to Field Operations Management](#)

VIDEOS

- [Water Utility Asset Management | Nobel Systems GIS Cloud Solutions](#)
- [GeoViewer GIS Work Orders for Water Utility Management | Nobel Systems GIS Cloud Solutions](#)

For inquiry, contact:

Bhushan Raj Shrestha
Managing Director

Email
bhushan@innovativesolution.com.np

Website
<https://innovativesolution.com.np/>