

# Data Management and Monitoring of Sanitation Services

In 2017, the WHO/UNICEF Joint Monitoring Programme (JMP) published the first global estimate for Sustainable Development Goal (SDG) indicator 6.2.1 – the proportion of the population using safely managed sanitation services. Methods for calculating SDG indicator 6.2.1 require data on the collection, transport and treatment of fecal sludge from non-sewered sanitation technologies. Such data is currently not accessible as no standard data collection and management strategies exist.

## Why Measuring Matters

The JMP publishes estimates for SDG indicator 6.2.1 every two years. Without a significant increase in structured data on faecal sludge management services, low and lower-middle income countries will continue to lack estimates for this indicator. If an indicator is perceived un-measurable, the entire target 6.2 may be considered unrealistic and lose credibility and investment.

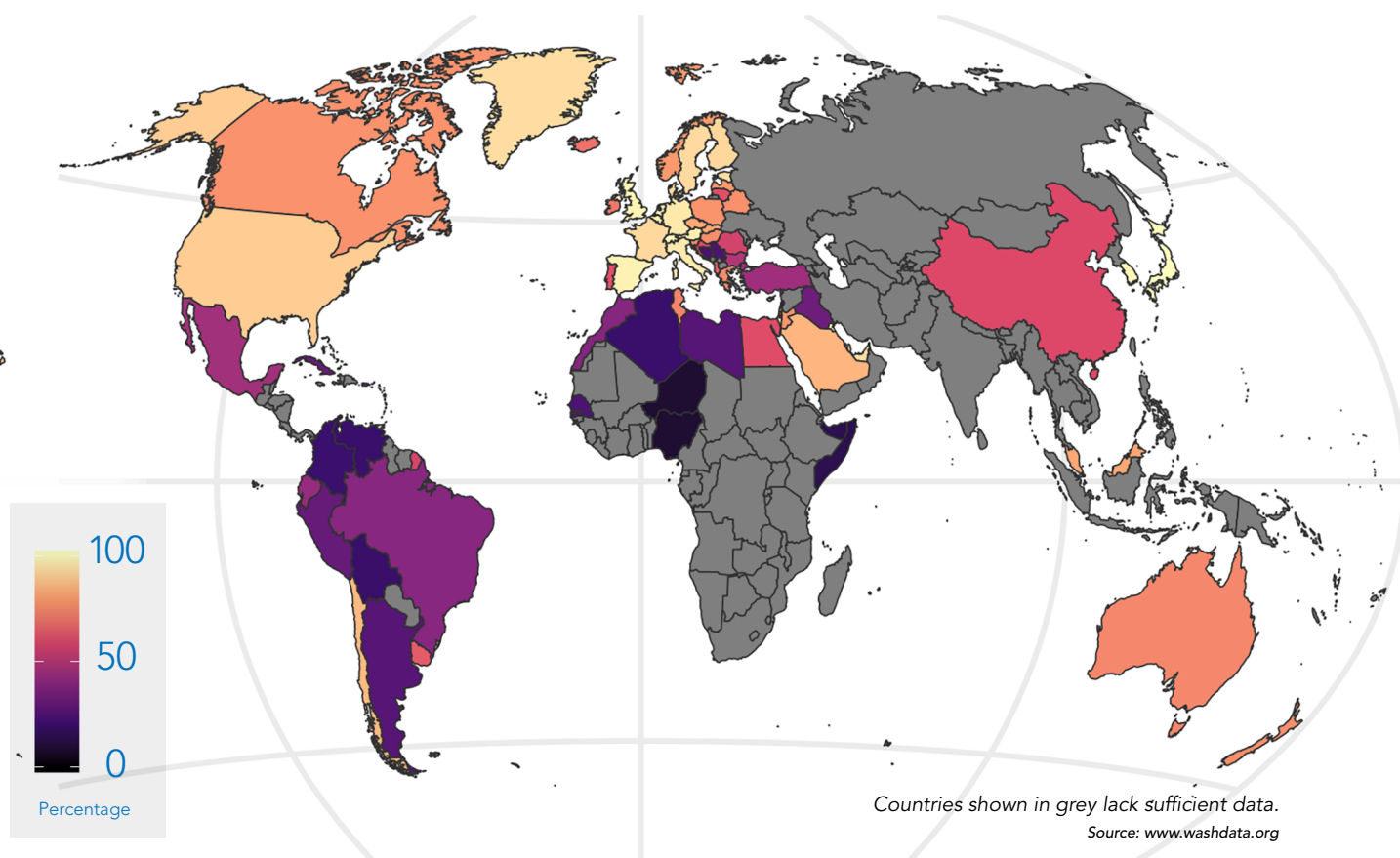
### THERE IS A NEED FOR:

- Innovative data collection methods
- Modern data management infrastructure
- An investment into establishing best practices

“What gets measured gets managed.”

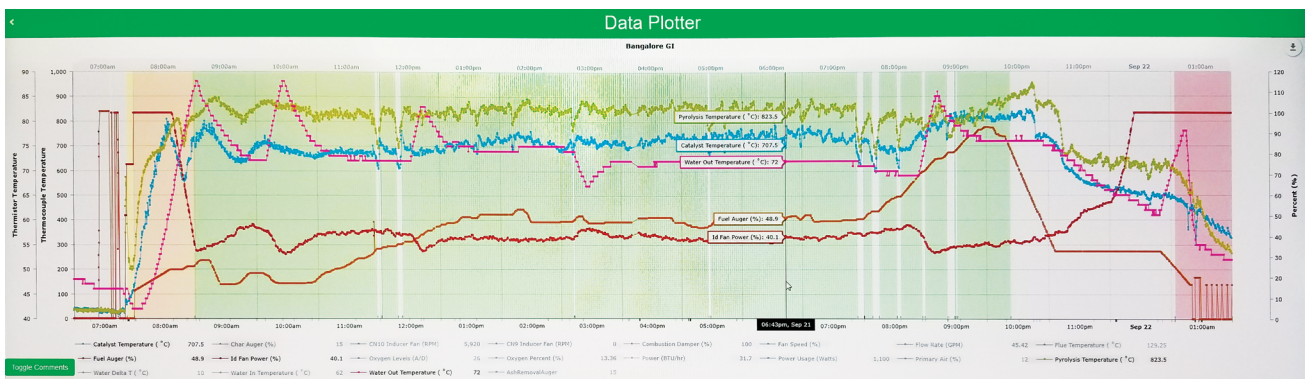
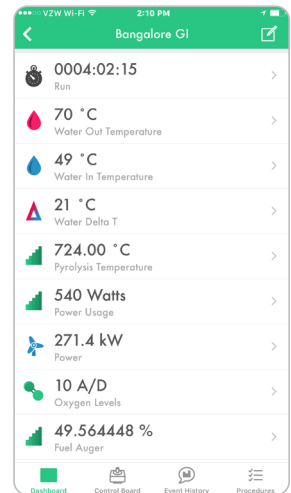
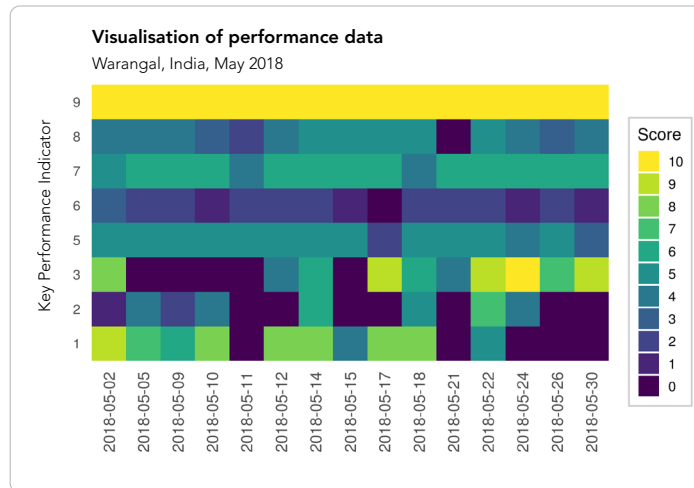
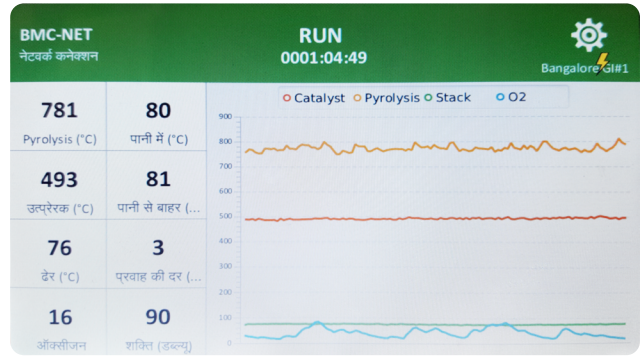
PETER DRUCKER

## PERCENTAGE OF POPULATION USING SAFELY MANAGED SANITATION SERVICES IN 2015



# Data Management for Sanitation Solutions

Biomass Controls PBC has developed treatment units for the safe treatment of fecal sludge, menstrual hygiene management products and other biomass. Sensors, cloud-based methods and open source data science tools are implemented to collect, store and analyze data. The kelv'n software infrastructure was developed as a cloud-based web application. The software application offers real-time reporting and alerts to operators and supervisors and allows for remote performance and compliance monitoring.



We continue to build our data analytics software based on our dataset of about 500 million records. Our reports also are increasing in value of the reports by adding reports for to carbon removal, Greenhouse Gas offset, evidence based treatment and impact metrics such as IRIS+.



Woodstock, Connecticut, USA | +1 833.BIOMASS  
[BiomassControls.com](http://BiomassControls.com)

Correspondence on this brochure may be directed to:  
[info@biomasscontrols.com](mailto:info@biomasscontrols.com)

