



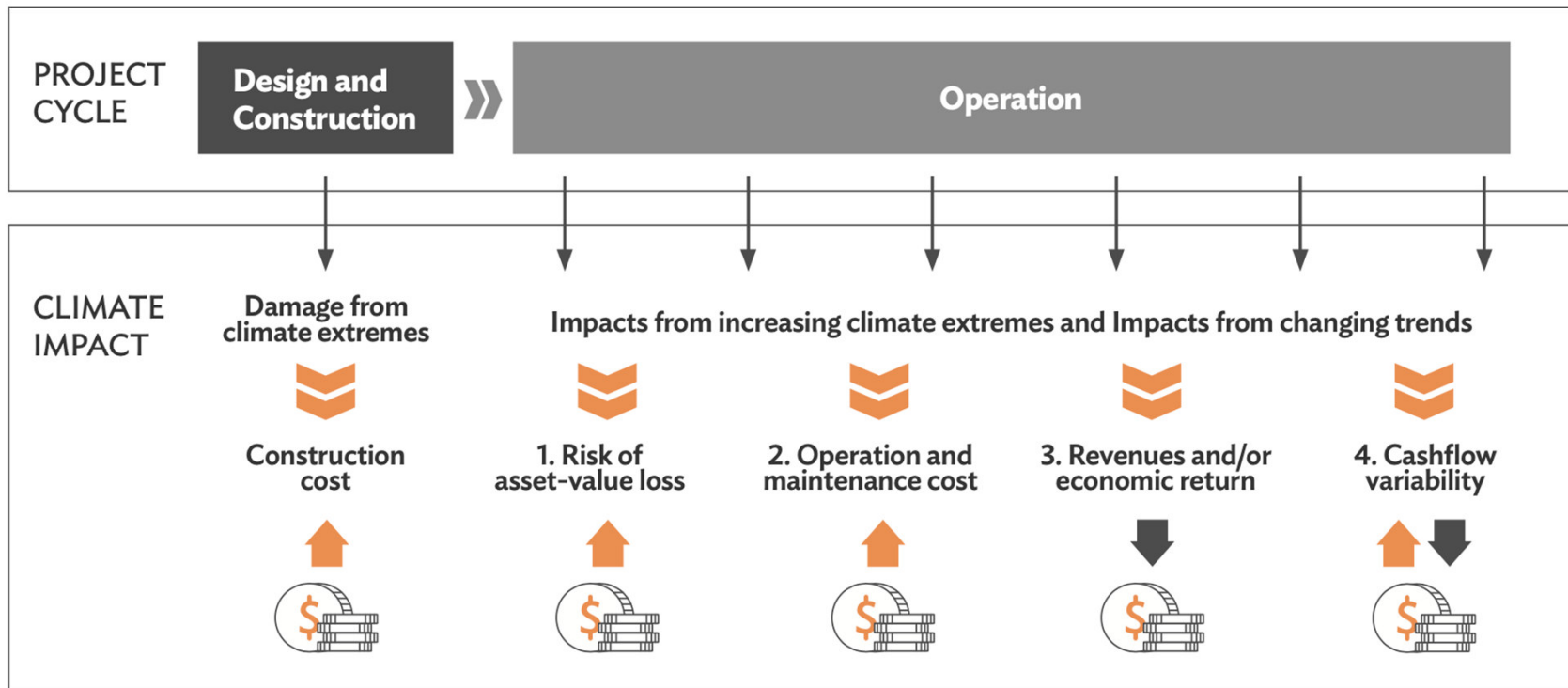
Enhancing Investments in Adaptation and Resilience

2021 International Climate Change Conference: A
Just and Affordable Transition Towards Net Zero

Climate change is already having significant impacts



Climate impact on infrastructure asset financial performance



Climate impacts are felt across systems with knock-on effects

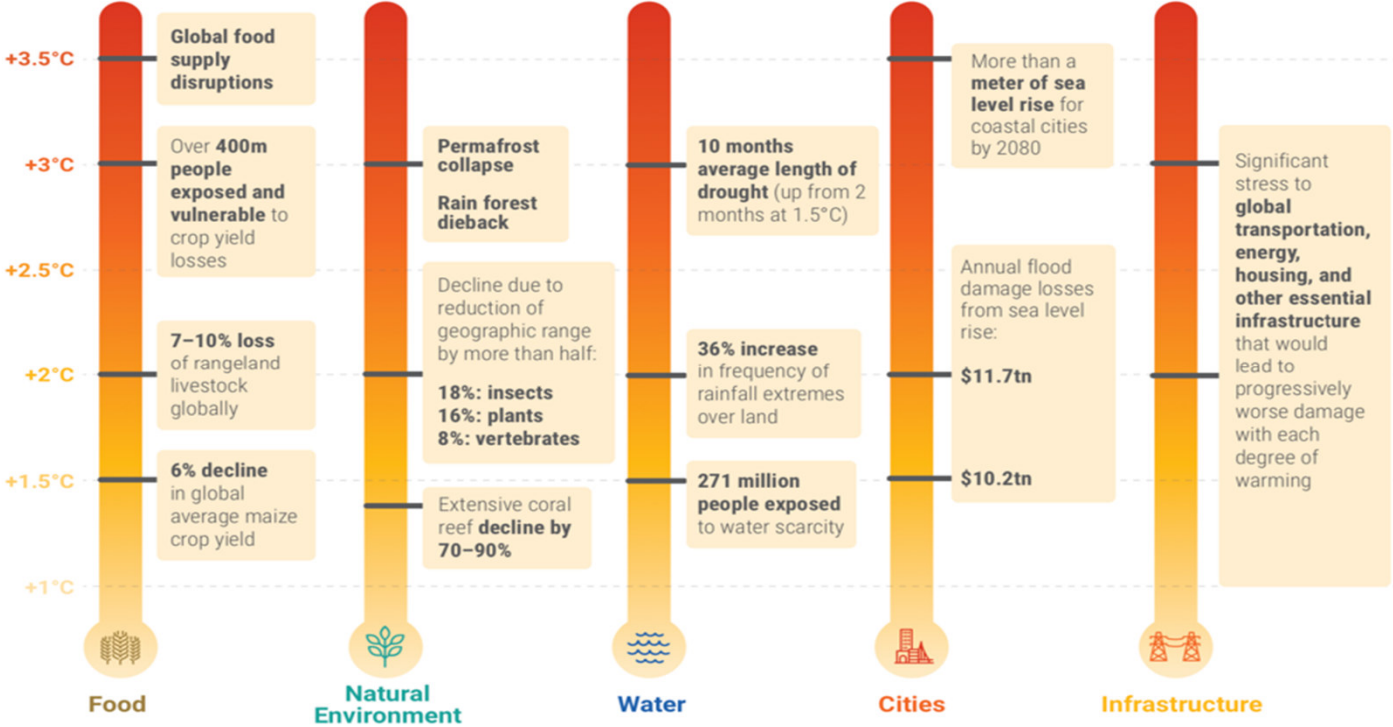
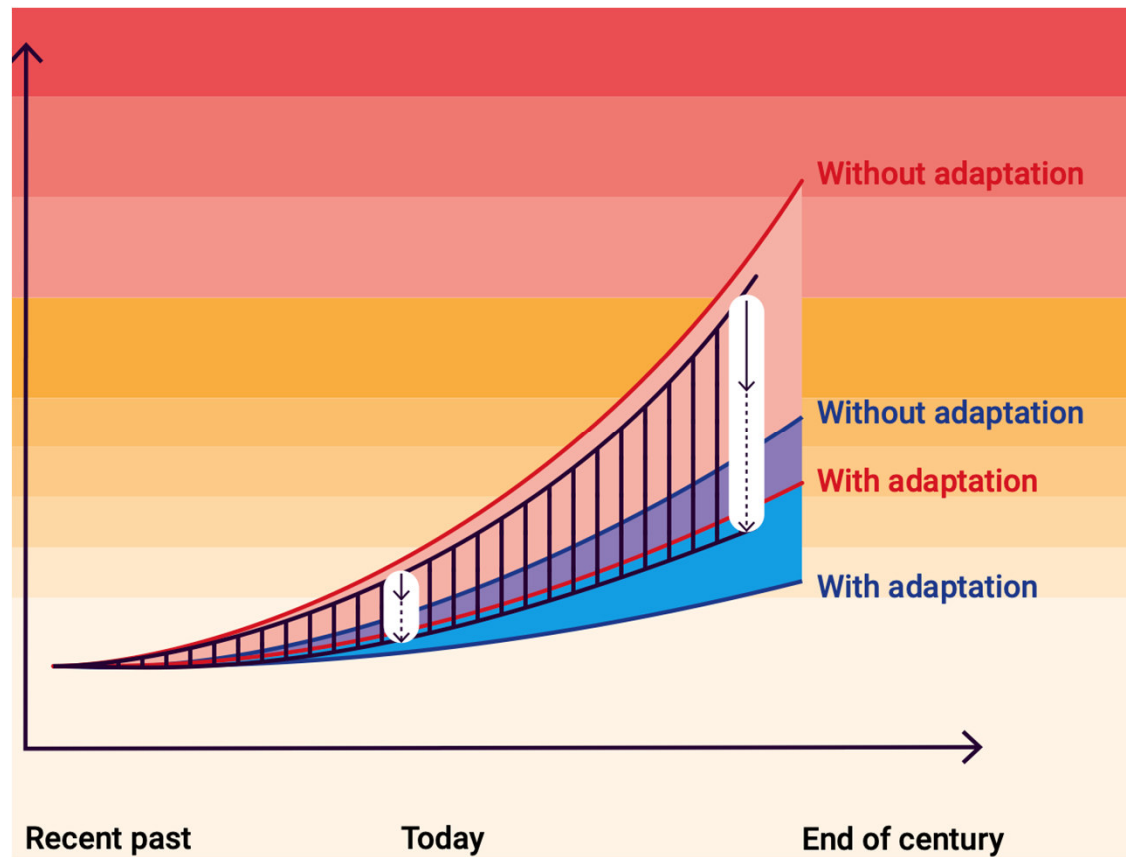


Image Source: Global Commission on Adaptation

Increasing loss and damage with limits of adaptation within systems being reached



Cost of dealing with climate impacts will increase with time if urgent actions are not taken



System-wide response is needed to manage climate risk through adaptation and resilience

