

ADB



**ASIA-PACIFIC**  
**SOCIAL PROTECTION WEEK 2023**  
**Social Protection in a Changing World**

26–28 September • ADB Headquarters, Manila, Philippines

# Integrating Graduation in Resettlement Implementation: IRSHUP Affordable Housing Project in Tamil Nadu, India

**Ricardo Carlos V. Barba**  
Principal Safeguards Specialist  
OSFG, ADB



# Program Overview

- **Program Highlights**

1. Inclusive, Resilient, and Sustainable Housing for Urban Poor Sector Project, India
2. February 2022

- **Setup**

1. Builds on an underlying resettlement plan for an affordable housing project, with existing components of social assistance, livelihood promotion, and social empowerment
2. Main implementer: Tamil Nadu Urban Habitat Development Board, State Government of Tamil Nadu, India

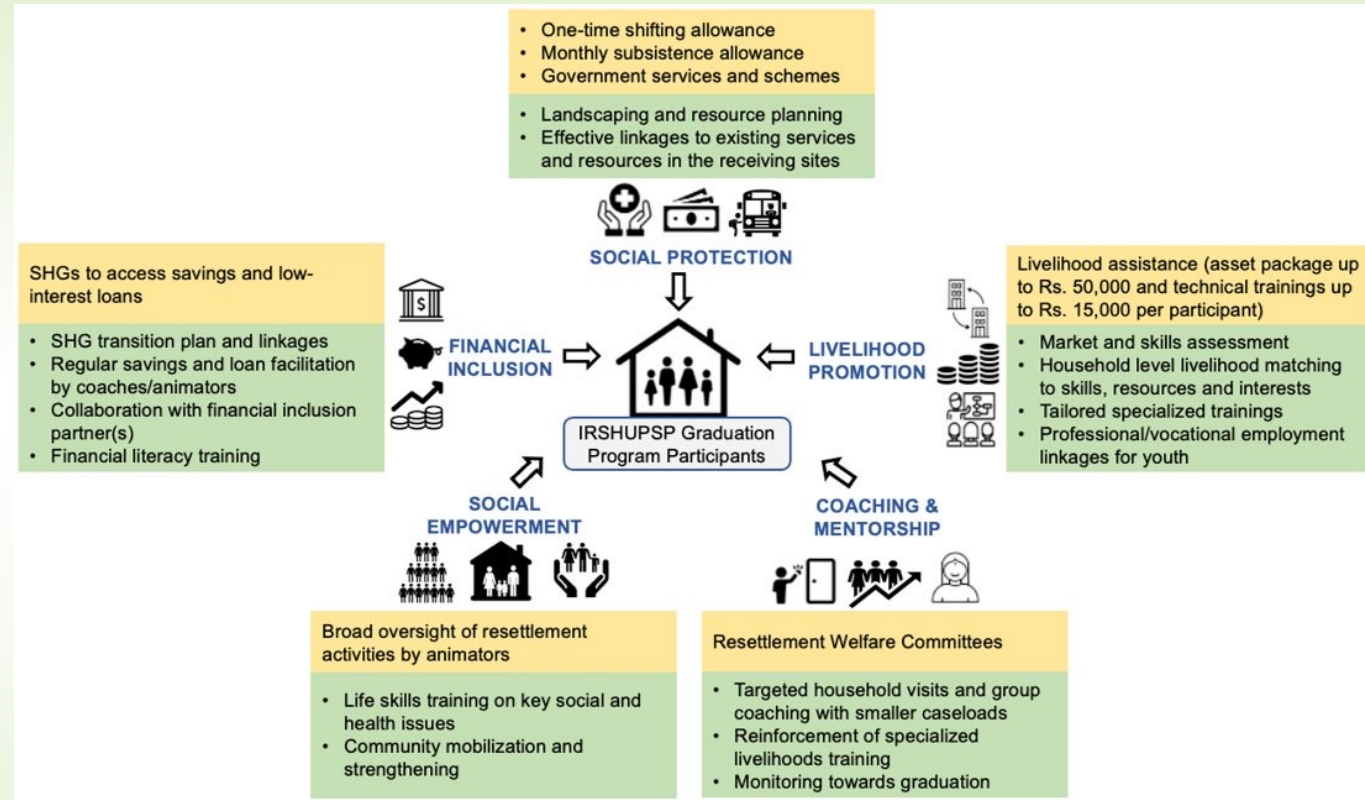
- **Scale**

1. Pilot in two towns (Reddiarpatti and Kalanivasal), selected from 9 sites (with 2/3 of households) of the project
2. # of households reached: 1,700



# Program Description

- **Overall project outcome:** Access to inclusive and safe affordable housing infrastructure and services for vulnerable and disadvantaged groups in Tamil Nadu increased
- **Graduation program objectives within the project:** Restore the economic and social welfare of affected vulnerable households post resettlement, to help them thrive in the new locations
- **Target:** Households with multiple vulnerabilities and those that have lost their primary source of income
- **Program components:** Household segmentation, social protection, livelihoods promotion, financial inclusion, and social empowerment



- RP Inclusion
- Graduation program

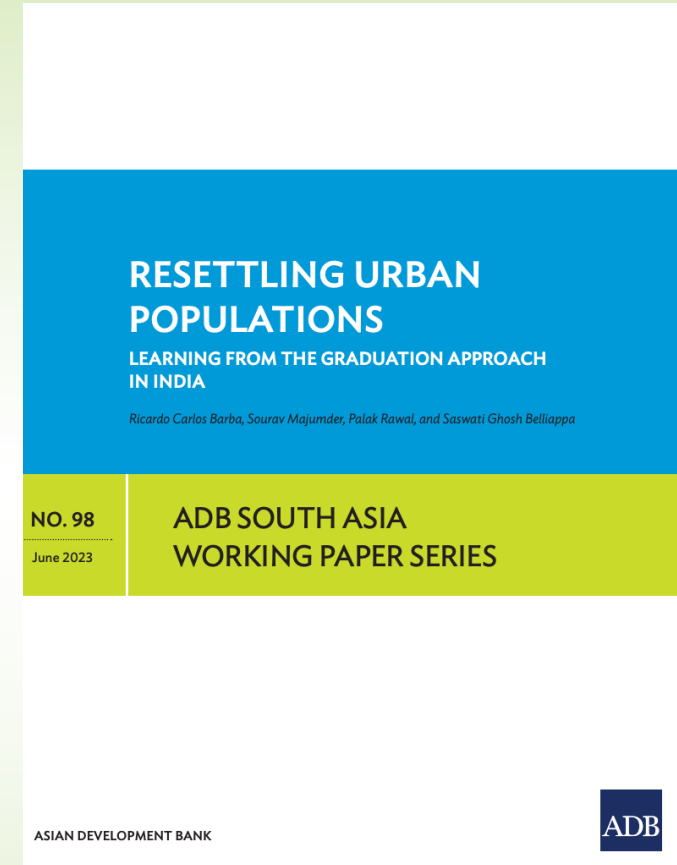
# Lessons from design and planning

- **Opportunities:**

- Integrating the Graduation approach in resettlement context
- Builds on existing safeguards plan and programs of the government
- Interventions are contextualized to the target group and relocation sites
- A unique value addition to resettlement – can become an example of mitigating adverse impact and enabling positive change, building resilient communities in the long term

- **Challenges:**

- Time gap between planning and implementation
- Many components of the Graduation program design need refinement closer to the relocation date
- Program planning needs to include additional measures to mitigate community resistance to relocation through consultations and continuous engagement
- Government partner implementing Graduation approach for the first time, requiring ongoing capacity building and technical support



# Research observations

- **Learning requirements:**
  - Long-term impact of Graduation interventions on the resettlement of households, such as sustained occupancy, economic and social well-being
  - Medium term impact of economic and social indicators for target households
  - Scalable Graduation interventions from the pilot, to integrate components in the other seven project sites
  - Sustainable components that can be embedded in TNUHDB's programming, such as identification of vulnerable households, monitoring and data collection mechanisms
- **Specific efforts:**
  - The project is contributing to **restoring climate vulnerable sites** which were flood-prone
  - The program is also contributing to **women's empowerment** through gendered considerations in market assessment and livelihood impact survey, gender-responsive life skills training, and strengthening of women's groups in financial inclusion





25-Sept-2023 3:04:31 pm  
Vallam  
Tamil Nadu



25-Sept-2023 3:43:13 pm  
Vallam  
Tamil Nadu



25-Sept-2023 3:10:15 pm  
Vallam  
Tamil Nadu



25-Sept-2023 2:55:50 pm  
Vallam  
Tamil Nadu



**Thank You**

