

# Pelindo's Green Port Initiatives To Contribute Sustainability

PT Pelabuhan Indonesia (Persero)  
July 2023

Mr. Nosep Kristoro  
Department Head, Corporate Sustainability, Pelindo Group



An aerial photograph of a busy port. A large container ship is docked at a pier, with several yellow and blue gantry cranes positioned along its length. The ship's deck is covered with stacks of colorful shipping containers. In the foreground, the pier is filled with more stacks of containers and several smaller cranes. The water of the harbor is visible in the upper right corner. The overall scene depicts a major hub of international trade.

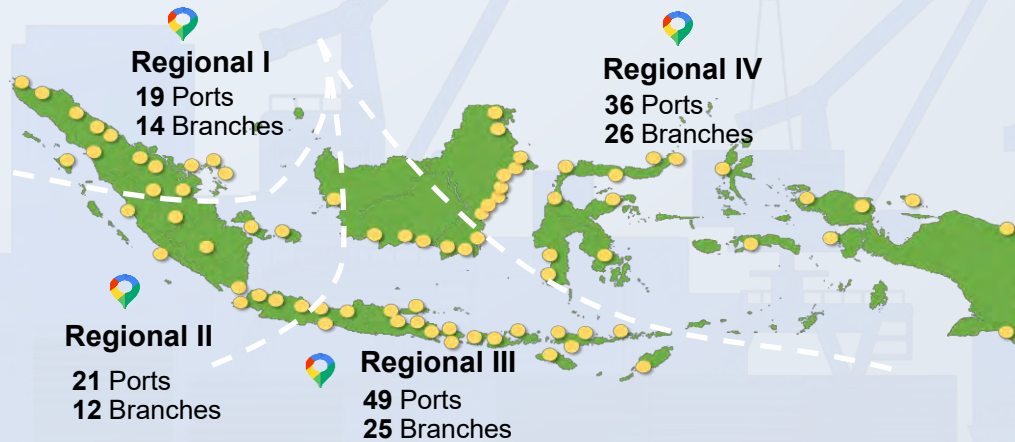
# Company Profile



# Overview of Pelindo

**Pelindo is the sole government-owned port operator in Indonesia**

- PT Pelabuhan Indonesia (Persero) (“Pelindo”) is the only State-Owned Enterprise (“BUMN”) and the leading port operator in Indonesia.
- Pelindo and its subsidiaries are engaged in end-to-end maritime supply chain and logistic ecosystem including container port services, non-container port services, logistics and hinterland services, and marine and equipment services.
- Pelindo operates 125 ports, covering all over Indonesia .



## CONTAINER SERVICES

Loading and unloading service for containerized goods from ships to delivery including:

- Stevedoring
- Haulage
- Wharf Services
- Receiving/Delivery
- Stacking Services

## NON CONTAINER SERVICES

Loading and unloading service for non-container goods from ships to delivery including:

- Liquid bulk terminal services
- Dry bulk terminal services
- Vehicle terminal services
- Special terminal services
- Multipurpose terminal services
- Private terminal services



## LOGISTICS & HINTERLAND

A support service related to logistics in port services including:

- Trucking
- Warehousing and storage
- Multimodal transportation services
- Bounded warehousing
- Container distribution center (CDC)
- Industrial area
- Property
- Marina & Marine Tourism

## MARINE & EQUIPMENT

Ship operational services starting from entering to exiting the port including:

- Pilotage Services;
- Towage Services;
- Mooring Services;
- Water, Garbage and Waste Services

In addition, there are equipment, utilities, dredging, and energy services.

### Key Statistics:

<b>125 Ports</b>	<b>4 Sub Holdings</b>
<b>4 Regionals</b>	<b>57 Subsidiaries/Entities</b>
<b>77 Branches</b>	<b>25,960 Employees</b>

# History of Pelindo

Pelindo is the result of the merger of 4 (four) SOEs since 2021

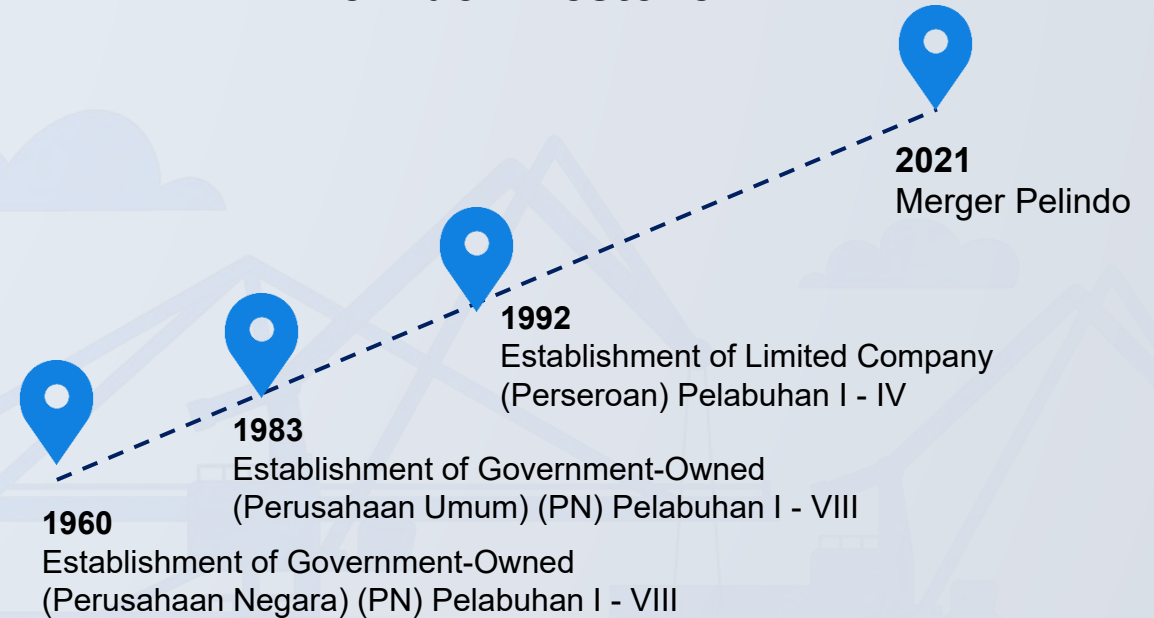
## Pelindo Before Merger



## Pelindo Post Merger



## Pelindo Milestone



- Historically, the government-owned port operators were established in 1960 and has been operating separately
- The merger of 4 State Owned Enterprises (SOEs) in Port Services on October 1<sup>st</sup>, 2021, consequently, leads to the emergence of PT Pelabuhan Indonesia (Pelindo) as the only SoE in Indonesia for Port Service Business. Its service territory covers the whole nation, from the Eastern to the Western region of Indonesia.



# Rationale for Pelindo Integration

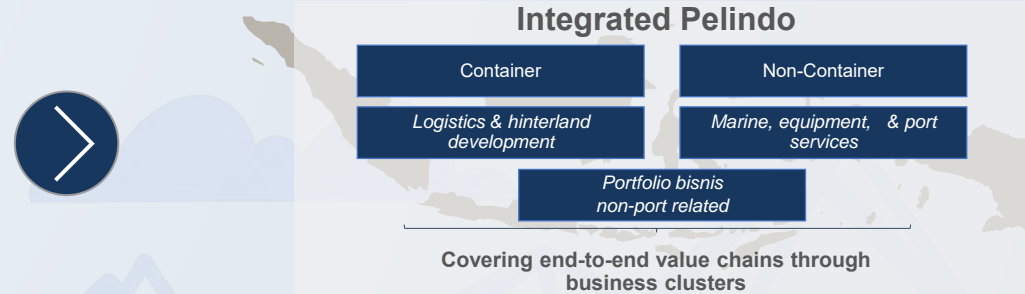
Pelindo integration aims to improve operation, commercial, & financial performance

## 4 Separate Pelindo Models



## PT Pelindo

### Integrated Pelindo



Less coordinated



Better strategic control

An overall **planning for the network, asset investment**, with a big aim to reduce logistics costs

Non-standardized operations



End-to-end standardized process

**Operations** that are **more reliable and efficient** to create better port network connectivity in all national ports

Suboptimal capex allocation and limited financial



Optimal capex allocation and better financial capability

To **improve** the condition of the **balance sheet** and **financial position**

Non-standardized HR development programs



Standardized HR development program

The existence of a **standardized HR program** has the potential to **reduce variance in employee productivity**

Non-standardized IT systems



Standardized IT system

**Standardized IT system** to support port activities

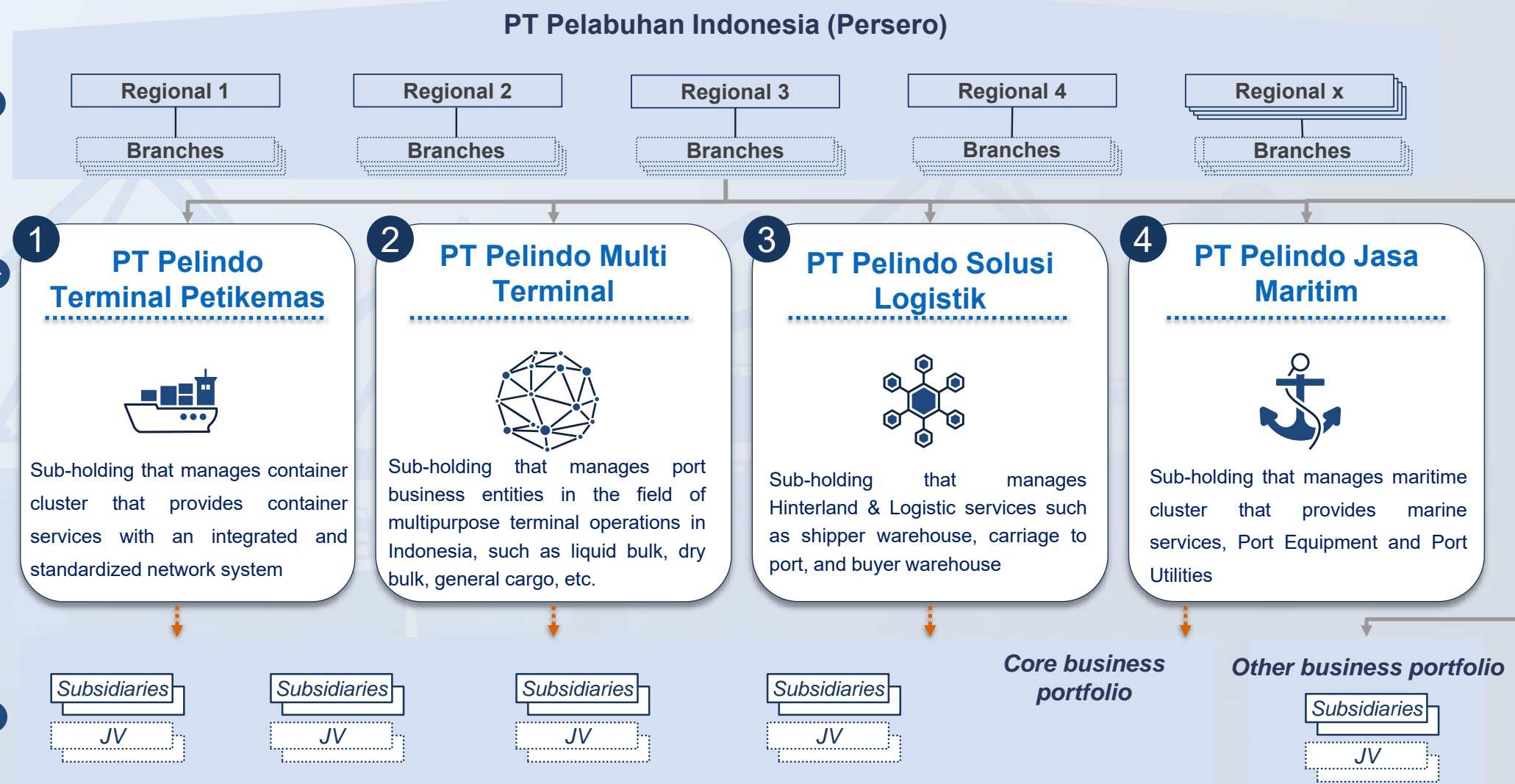
# Pelindo Group Organization Structure

Pelindo acts as strategic architect supported by regional coordinator, subholdings, and business operators

- 1 Strategic architect & Concession Owner
- 2 Regional coordinator

3 Business Owner

4 Business Operator





# Our Vision

Pelindo aims to become a World-Class Integrated Maritime Ecosystem Leader

## Vision: Become a World-Class Integrated Maritime Ecosystem Leader

Mission: Develop national maritime ecosystem network through increasing network connectivity and service integration to support Indonesia's economic growth

### Strategic Pillars

#### World-class port transformation



- Improve port operational quality standards by utilizing digital technology
- Improve quality of customer-based service (cust. centric)
- Develop sustainable ports
- Preparing regional expansion

#### Strengthening the logistics ecosystem



- Increase cooperation with sea and land logistics industry players to support the optimization of national logistics costs
- Expand cooperation with industrial/logistics areas to encourage increased flow of goods

#### Maritime *supply chain* efficiency



- Expand the national port network
- Integrate Port Network, Transportation mode and supporting areas (i.e. Industrial/logistics areas)

#### Enhancing Corporate Value



- Strengthen the company's financial structure
- Optimal asset management
- Vertical & horizontal business development

### Enablers



- Develop organization to drive business efficiency
- Sustainable innovation
- Develop human resources capability and quality
- Strengthen the utilization of technology and information systems





# Green Port Initiatives



# Green Port Initiatives

Pelindo has implemented various initiatives as part of its net zero strategy



**Electrification of port equipment**



**Implementation of digital solutions for operational efficiency**



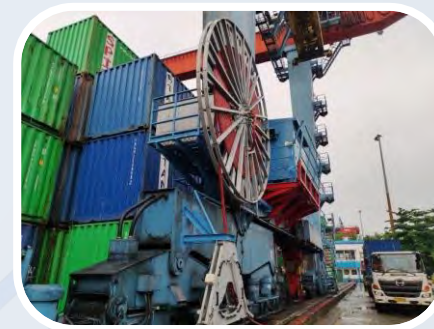
**Provision of incentives for supporting greener operations**



**Utilization of renewable energy in the port**



**Implementation of efficient waste management**



**Diesel to Electric Crane Conversion**



**On Shore Power Supply**



**Solar Power Plant Installation**



**Mangrove Plantation**



**Waste management and conservation in port area**



**Port Reception Facilities**

## Initiatives Strategic



# Progress of Port Equipment Electrification

Up to the first semester of 2023



- Until the first semester of 2023, **111 port equipment in 15 port branches** have been converted to electric power sources
- Target of equipment electrification are **250 port equipment in 2025** and **456 port equipment in 2030**



# Solar Panel Development Project

Up to the first semester of 2023

## Selat Morong



Pilot Station  
**0,6 kWP**



## Terminal Teluk Lamong



Office (Operational Support)  
**20 kWP**

## Surabaya Container Terminal



**8,4 kWP**

Until the first semester of 2023, **29 kWP** Installed Solar Power Plant



# On Shore Power Development Project

Up to the first semester of 2023



Until the first semester of 2023, **52 Points** Installed Multi Voltage and Frequency On Shore Power



# Progress of Mangrove Plantation

Up to the first semester of 2023

## Regional 1



## PT Pelindo Multi Terminal



## Regional 2



## PT Pelindo Solusi Logistik



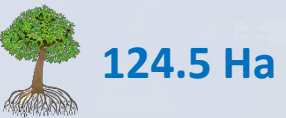
## Regional 3



## PT Pelindo Terminal Petikemas



## Regional 4



- Total mangrove plantation until the first semester of 2023 are **143.75 Ha**



# Progress of Waste Management and Reception Facilities

Up to the first semester of 2023

## Regional 1

Waste Water Treatment Plant **23 branches**  
Reception Facilities **14 branches**

## Regional 3

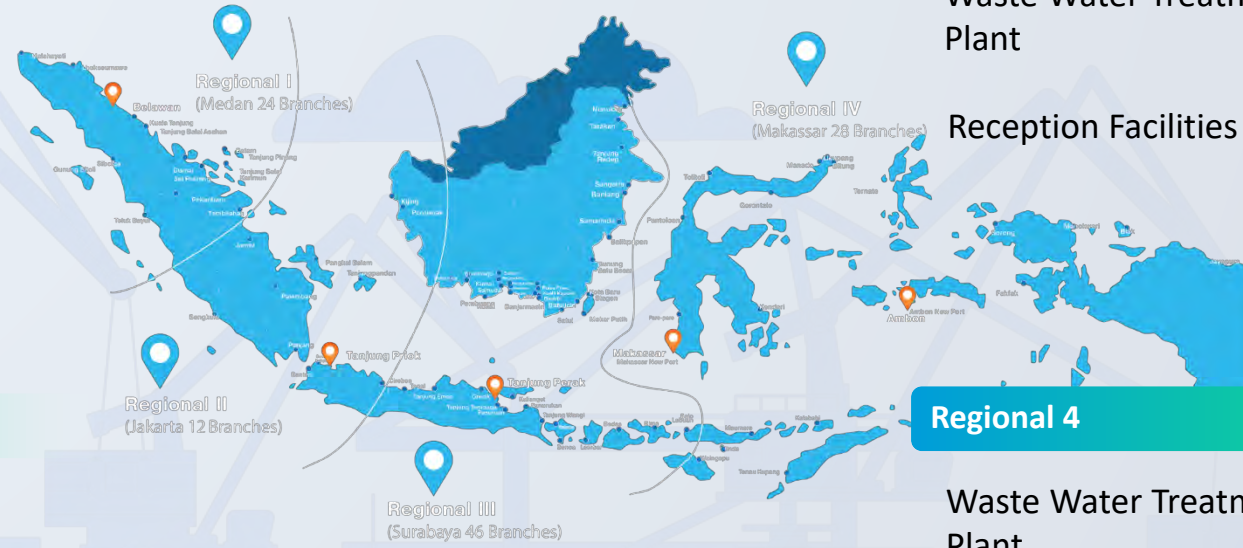
Waste Water Treatment Plant **9 branches**  
Reception Facilities **16 branches**

## Regional 2

Waste Water Treatment Plant **8 branches**  
Reception Facilities **13 branches**

## Regional 4

Waste Water Treatment Plant **10 branches**  
Reception Facilities **22 branches**



Until the first semester of 2023, **50 branches** of Pelindo already installed **waste water treatment plant** and **65 branches** of Pelindo already had **reception facilities**



**Thank You**

