

Direct access to important information such as condition, GPS location and detailed inspection reports on the maintenance work carried out on hydrants, pressure reducing valves, gate valves and air release valves. In addition, all leakage reports are also displayed in the HAWLE.MAP.

## HAWLE.MAP



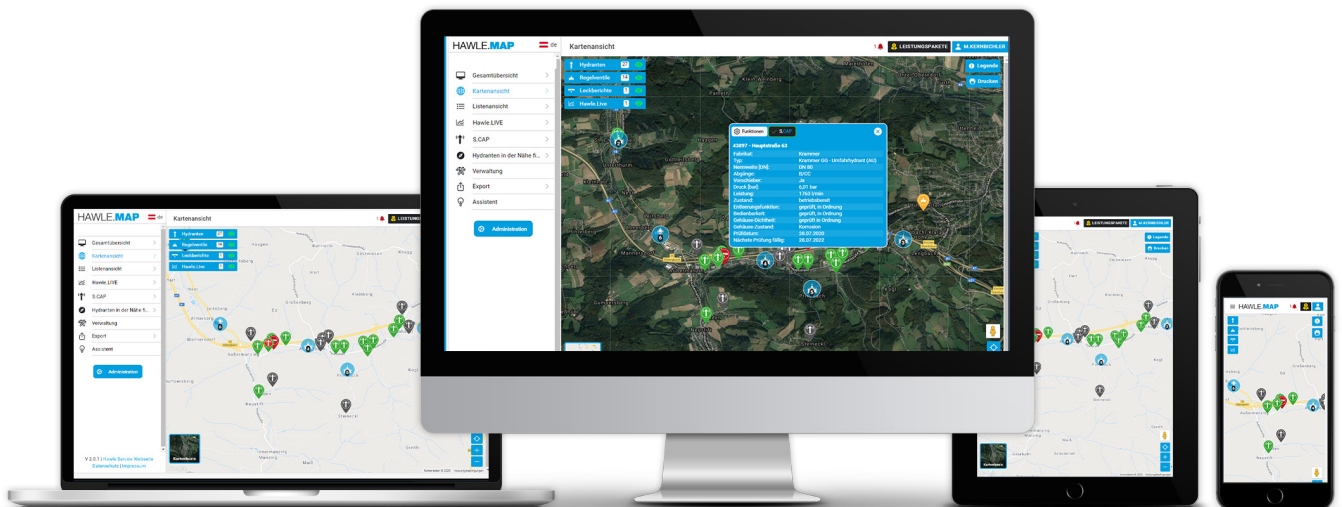
- **Optimal use** for all end devices
- **Same database** for municipality, water authorities and fire brigade
- **Extended analysis**
- Documentation of the **extinguishing water supply** (civil protection)
- **GIS - interface**
- **Additional user accounts** for employees, companies or fire brigade with individual authorisations
- **Data - export and import** for all products installed in the entire water network.
- Display of **air release valves and leakage reports**

### Features

- Free demo at [www.hawle-service.at](http://www.hawle-service.at)
- Unlimited access for customers with silver and gold package
- Different map views (satellite view, OpenStreetMap)
- deployable radius & designer-symbols visible
- Inspection and maintenance reports visible
- No software installation required

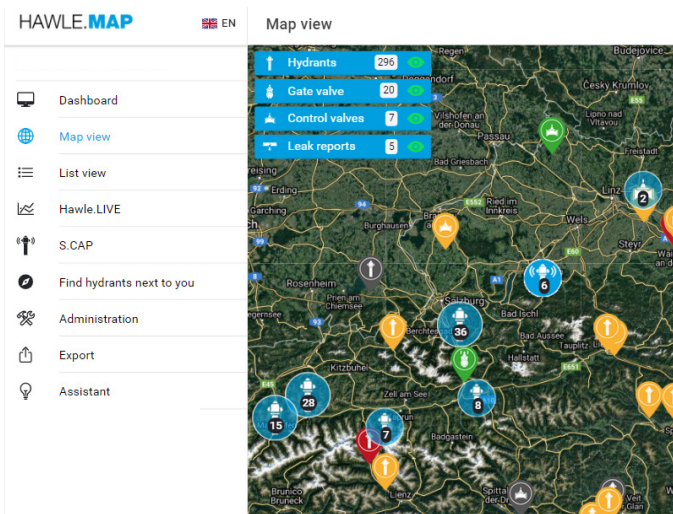
### News

- HAWLE.MAP App für Android & iOS
- Assistent for **calculations** (basic design for pressure reducing valves, pressure lost in pipelines) and **technical information** (flange dimensions, pipe dimensions, Synoflex, required bolt lengths, spindle turns, tightening torque, ...)

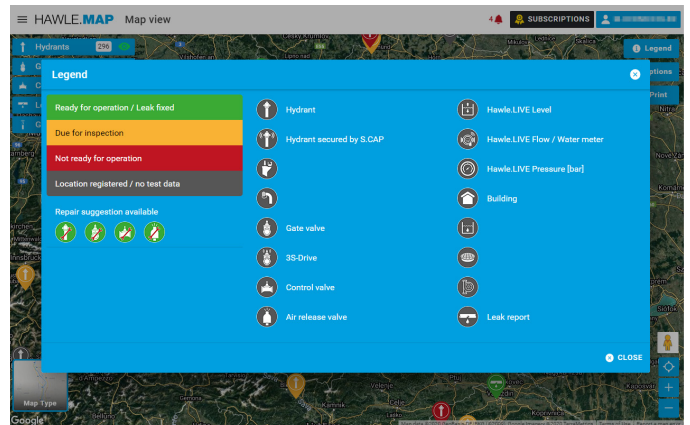


### Overview of functions

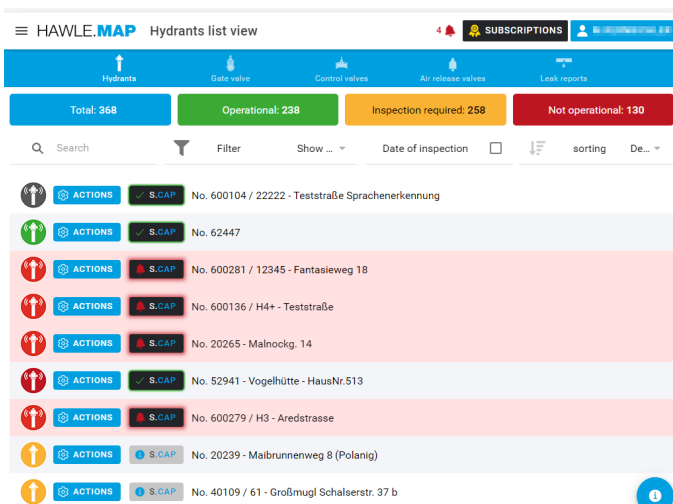
- Inspection & leakage reports
- Find the nearest hydrant
- Add hydrants
- Switch hydrant status active / inactive
- Extinguishing water deployable radius
- S.CAP administration & commissioning
- HAWLE.LIVE graphs
- Support for pressure reducing valves
- Control of 3S activator
- Assistant for calculation and technical information
- User administration
- Message and communication administration
- Request for a service technician
- Printout function
- Export (xlsx, xls, csv, shp)



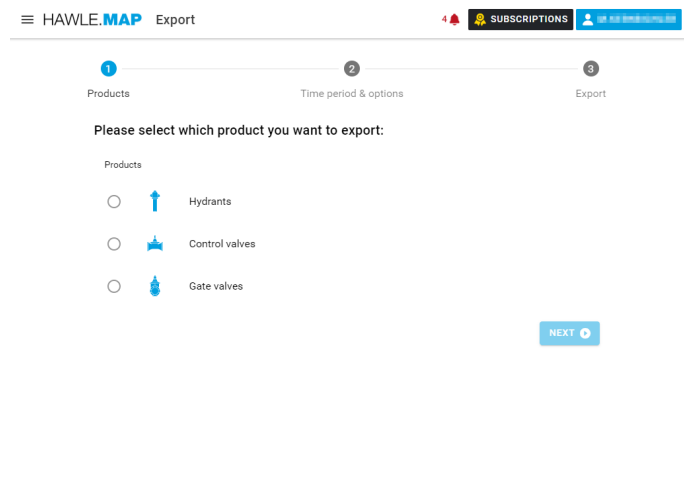
Task menu HAWLE.MAP



Easy-to-read legend - overview of which valve/hydrant has which status

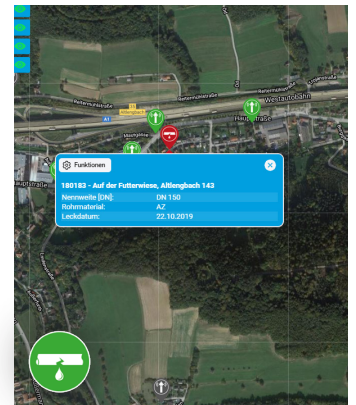
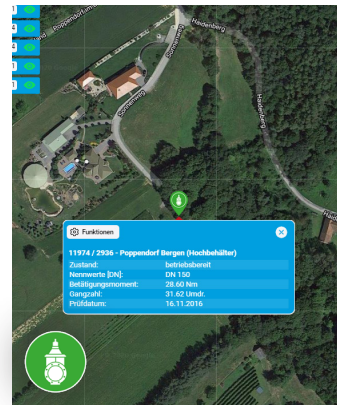
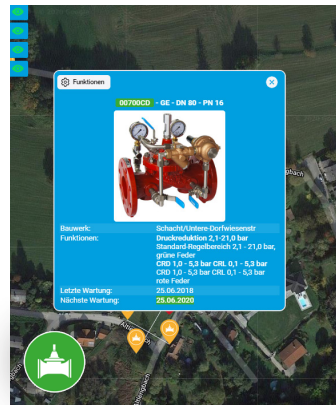
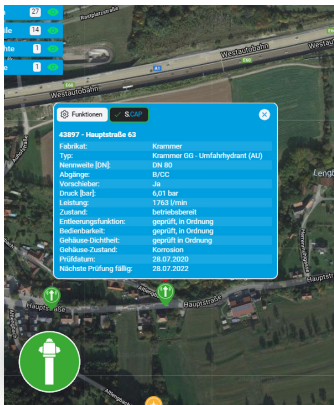


List view over all inspection reports

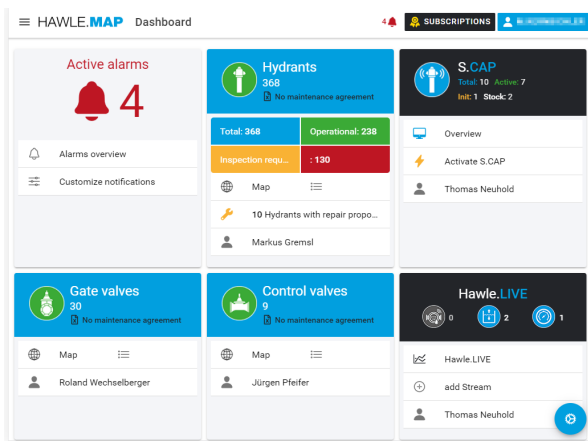


Export options for test data

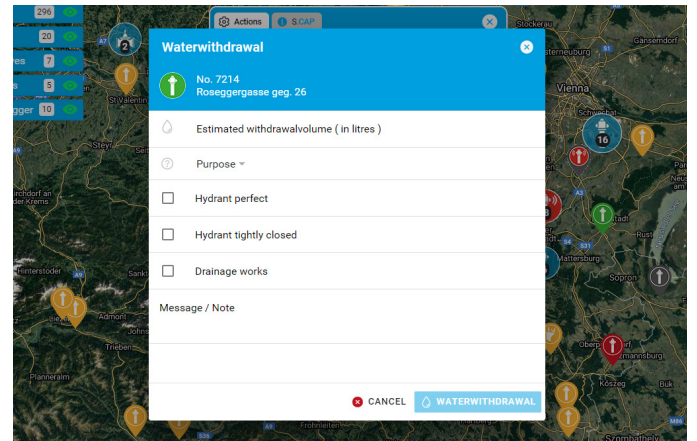




The most important information directly visible in the map view



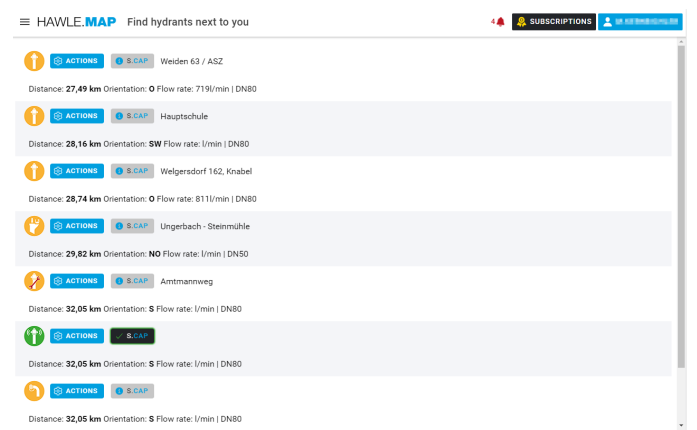
Dashboard - most important information visible



Documentation withdrawals of water



Direct access via NFC / QR Code to the current valve configuration, data sheets, commissioning instructions and the latest inspection report.



Based on your own location (smartphone), the nearest hydrants are displayed including distance, flow rate and operating status.