



OSMOFLO ADB Interactive Session

October 20th 2021



World class desalination

Osmoflo at a Glance



Osmoflo is the largest Australian based Desalination and Water Recycling company, with global offices in Australia, India and the United Arab Emirates. With a workforce of approximately 200, we have an enviable track record of providing successful, affordable, high technology water and waste water solutions dating back to 1991.

Complete water treatment solutions with focus on process innovation

Designed and delivered over 500 projects since 1991

Operate and Maintain 90+ plants for clients around the globe

Offers flexibility through capital purchase, build own operate , rental options

Backing of strong shareholders, and in Jan 2017 joined the Hitachi Zosen group of companies



World class desalination

Osmoflo Niche

WATER TREATMENT

For difficult to treat waters
(heavy metals, organics)



COMMERCIAL FLEXIBILITY

Design & Construct, Build Own Operate,
Rentals

REMOTE APPLICATIONS



PROCESS WARRANTY

24/7 MONITORING

Monitoring & Support through advanced
automation & control.

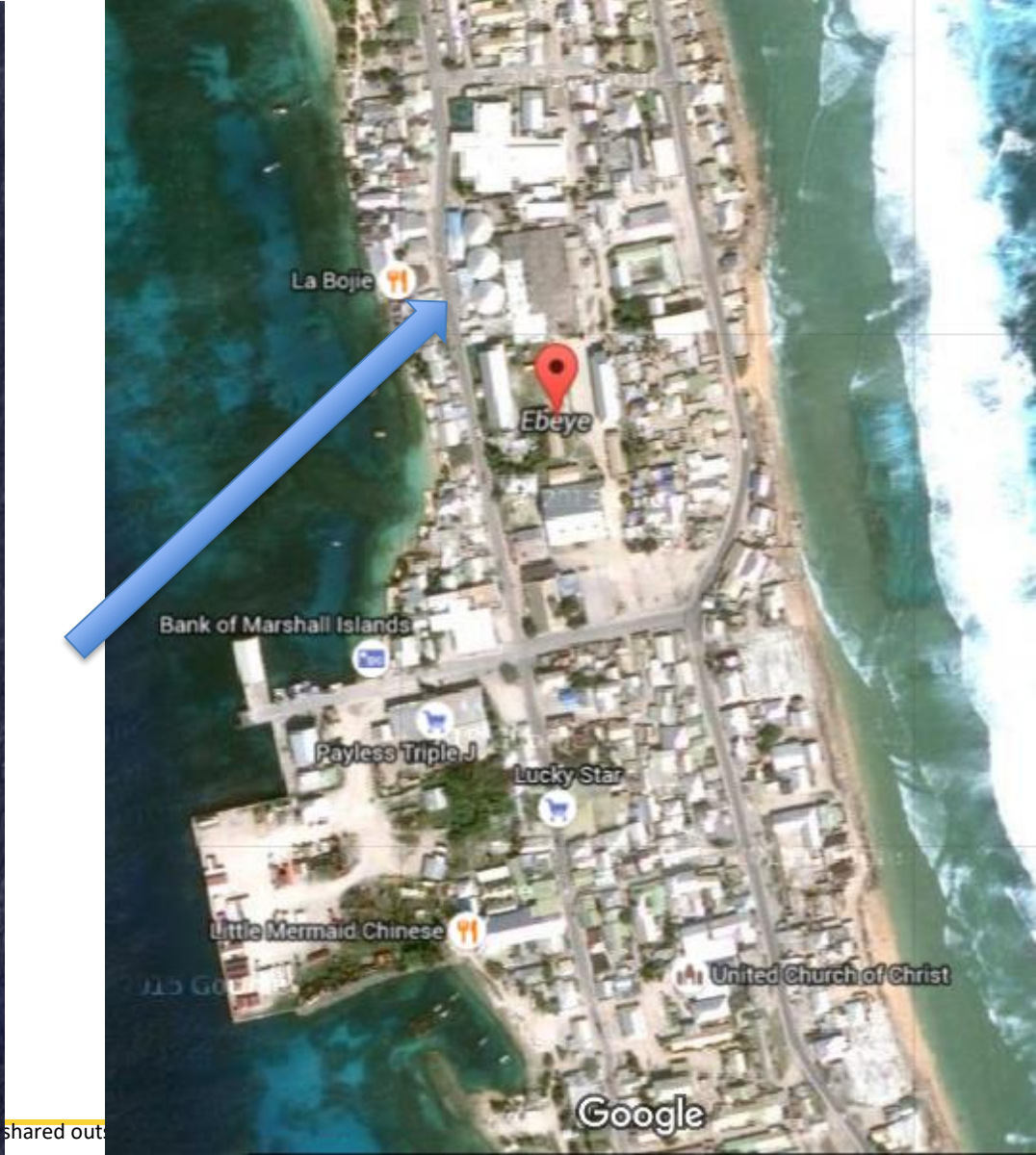


LIFETIME SUPPORT

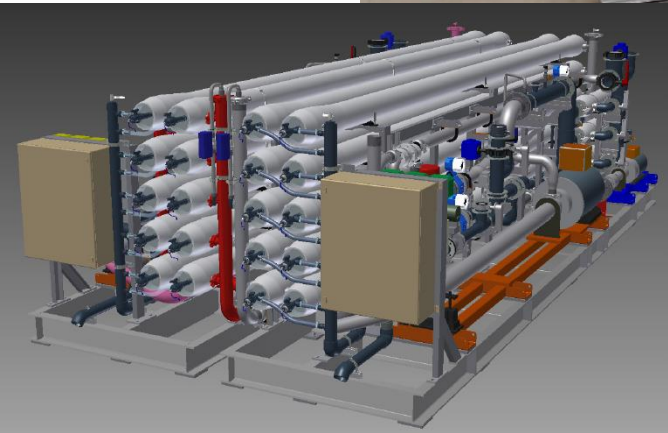


World class desalination









World class desalination

nd staff. It may be shared outside ADB with appropriate permission.

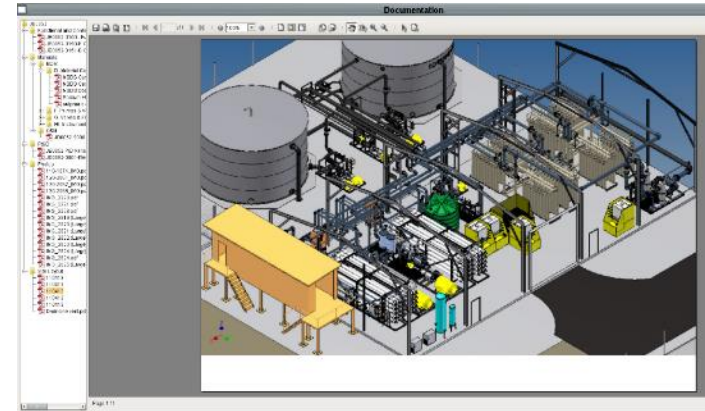
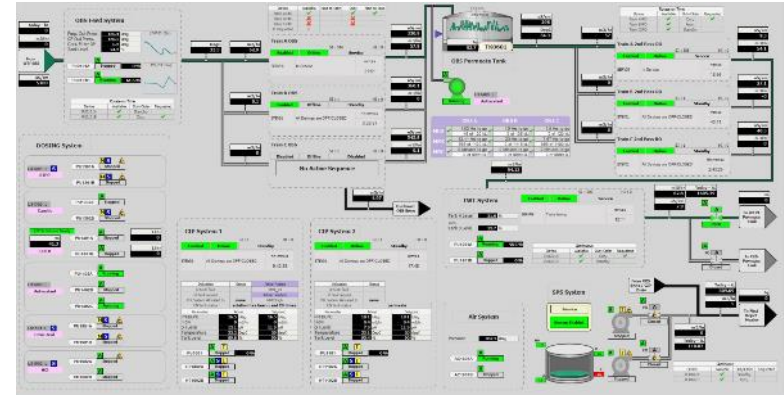




World class desalination

Technology & Innovation

- Artificial Intelligence saves 9-18% of SWRO Energy Consumption
- Design to fit Marshallese Infrastructure
- 24/7 Plant Connect Remote Monitoring
- ISO 55001 Asset Management



Asset
Management
Systems
ISO 55001



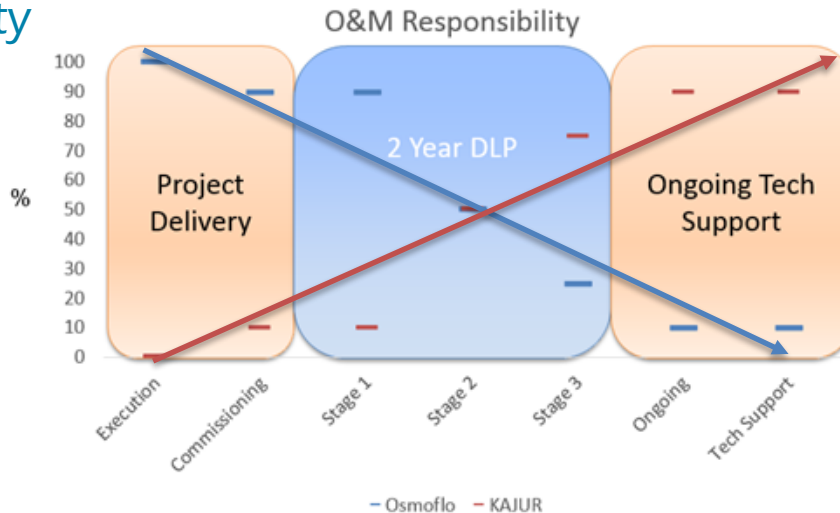
World class desalination

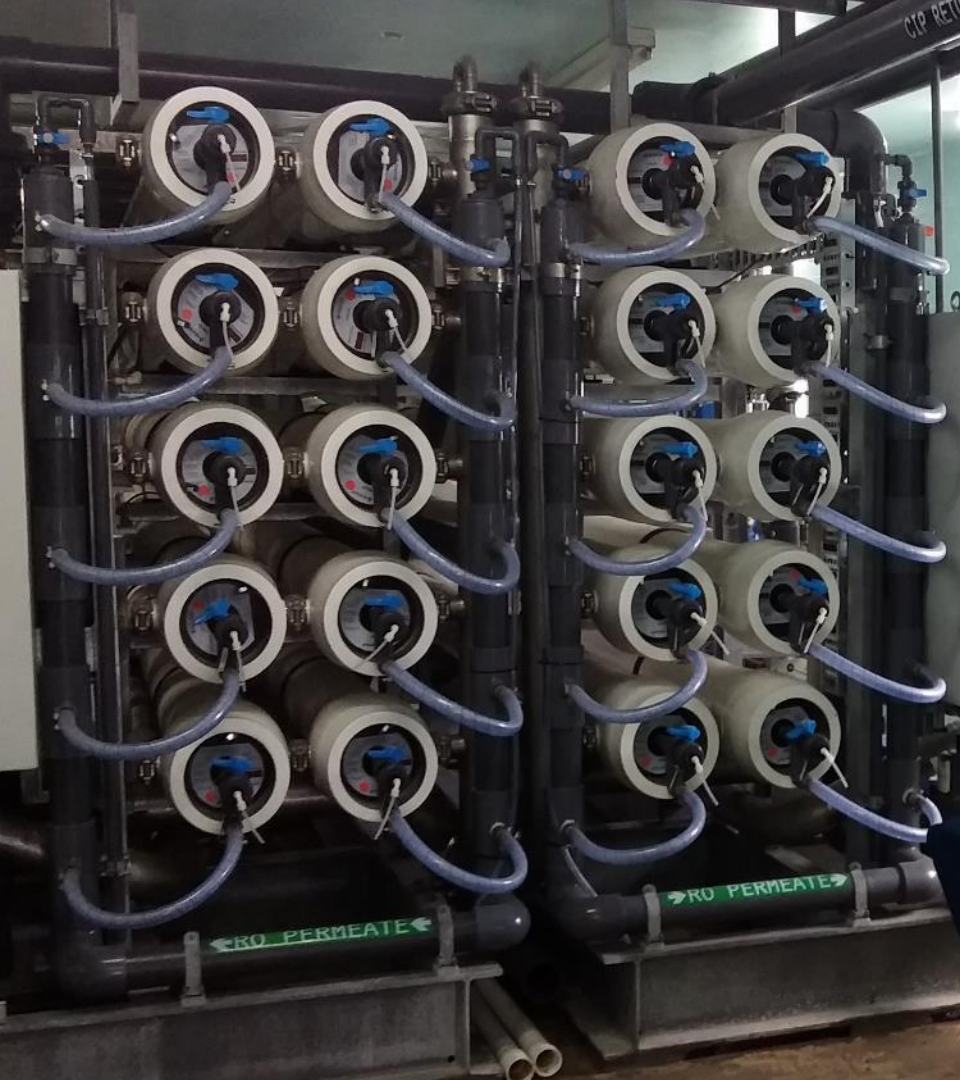
Marshallese Capability

- Safety & Risk Management
- Workshops providing Certified Training
- Transition on O&M



Responsibility





Operate and Maintain

- 120+ plants operated and maintained daily
- PlantConnect® - remote site monitoring & operations
- 24 hour manned control center
- Global network of technical specialists



DANGER
110
VOLTS

DP03B

DP03A

DP01B

DP01A

CAUSTIC

ANTISCALANT



Community Engagement



- Partnership
- Collaboration
- Cooperation



Q & A





Head Office: Burton, South Australia

Locations: Australia, India, United Arab Emirates

www.osmoflo.com