



Innovation • Reliability • Pedigree

Worldwide industry leader  
in the design and manufacture  
of electrical cable couplers.



## Company Profile

AusProof are original equipment manufacturers of electrical cable couplers and components used in underground, open-cut and metalliferous mines as well as tunnel excavation projects. Today, the Queensland-based company is widely recognised for high voltage coupler and adaptor systems that demonstrate state of the art technology, with innovative designs and features.

With an unmatched reputation for innovation and reliability, AusProof have been industry leaders in coupler research and design for over four decades. Enabled by their expansive academic and practical knowledge of high voltage capability they have good reason to be proud of their many ground breaking achievements such as the manufacture of the worlds first 33kV coupler.


Since 1978, AusProof has continued to rethink old ideas, test beyond what is required and genuinely thinking outside the box to produce world class products that are safe not only for open-cut and underground mining, but also for most hazardous mining environments.

**'When it stands the test of time, works in the harshest conditions in the world and meets all your expectations, then you know you have a quality product!'**

AusProof's coupler systems are designed in Australia, with all components proudly manufactured in Gladstone, Queensland. Their dedicated on-site research and development department, is fed by the profits of their success and is responsible for all key AusProof product features such as:

- Phase segregation
- Air removal
- Insulating materials that extinguishes arcs and faults
- Flameproof paths that are replaceable
- One piece contacts
- Reduction of parts
- Ease of termination on cables
- Adjustable glands and smart coupler design allows ease of handling.

You can view our history [here](#).



With a diverse range of mining clients, AusProof has found opportunities in Australia, Africa, USA, South America and also in many parts of Asia and New Zealand.

## Product Ranges

### LOW VOLTAGE



**PES RANGE**

- 660 – 1,100 volts
- 60 and 90 amp
- Restrained plugs and receptacles



**PS RANGE**

- 660 – 1,100 volts
- 150 amp
- Restrained plugs and receptacles



**PL RANGE**

- 660 – 3,300 volts
- 300 – 425 amp
- Restrained plugs and receptacles

### HIGH VOLTAGE OPEN CUT



**6.64BKA RANGE**

- 6,600 volts
- 800 amp
- High voltage couplers



**114BKA RANGE**

- 11,000 volts
- 800 amp
- 4 bolt high voltage couplers



**118BKA RANGE**

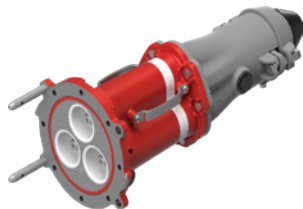
- 11,000 volts
- 800 amp
- 8 bolt high voltage couplers



**224BKA RANGE**

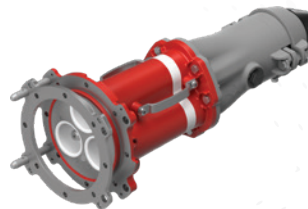
- 22,000 volts
- 425 amp
- High voltage couplers

### HIGH VOLTAGE – FLAMEPROOF



**EX118BSS RANGE**

- 11,000 volts
- 800 amp
- High voltage flameproof couplers



**EX118BSSRF RANGE**

- 11,000 volts
- 800 amp
- High voltage removable flange flameproof couplers

## Training Program and Syllabus

Gaining a greater understanding of the AusProof range of products helps us to improve the safety, quality and longevity of their use.

No equipment or machinery can be expected to perform without correct handling and maintenance so we have created a series of helpful 15 minute courses which are ideal for your next toolbox meeting.



### Aims and Benefits:

- Help improve understanding of electrical cable couplers in the industry and increase product life, product respect and safety.
- Each individual training is designed to be quick and to the point, without consuming company time.
- Courses can be completed over a period of time.
- Courses are split into two areas - theory and practical aspects of cable couplers.
- Courses provide a wide range of product knowledge, from understanding flameproof paths and phase segregation through to cable handling and terminations.
- Knowledge is king - as knowledge of our products and an understanding of how they are made grows, so does employee confidence. This process encourages correct handling and safe use practices.

### Training Program Syllabus

Number	Course Name
Theory 1.1	Tour of AusProof Pty Ltd
Theory 1.2	Flameproof paths
Theory 1.3	Phase Segregation
Theory 1.4	Air removal
Theory 1.5	Development of insulating materials
Theory 1.6	Research and development
Theory 1.7	Technical manual, parts and ordering
Theory 1.8	Stress control and terminations
Theory 1.9	Type and routine testing
Theory 1.10	Handling and maintenance
Theory 1.11	Product design
Theory 1.12	Cable construction
Practical 2.1	Cable handling
Practical 2.2	11kV FLP SWA coupler installation
Practical 2.3	11kV FLP UA coupler installation
Practical 2.4	22kV 425A coupler and adaptor termination
Practical 2.5	PL 4 pin 660-1100V restrained plug installation
Practical 2.6	PL 4 pin 3300V restrained plug installation
Practical 2.7	PL 6 pin 1100-3300V restrained plug installation
Practical 2.8	PS 660-1100V restrained plug installation



## Contact Information

### Head Office

6 Shona Avenue, Gladstone, QLD Australia 4680

Phone: (07) 4978 4000

Email: [ausproof@ausproof.com.au](mailto:ausproof@ausproof.com.au)

Website: [ausproof.com.au](http://ausproof.com.au)

### Western Australia / Northern Territory / South Australia

**Gary Hansen**

Phone: 0428 173 413

Email: [gary.hansen@ausproof.com.au](mailto:gary.hansen@ausproof.com.au)

### Queensland / New South Wales / Victoria / Tasmania

**Ryan Corrigan**

Phone: 0429 954 907

Email: [ryan.corrigan@ausproof.com.au](mailto:ryan.corrigan@ausproof.com.au)



FOLLOW US   