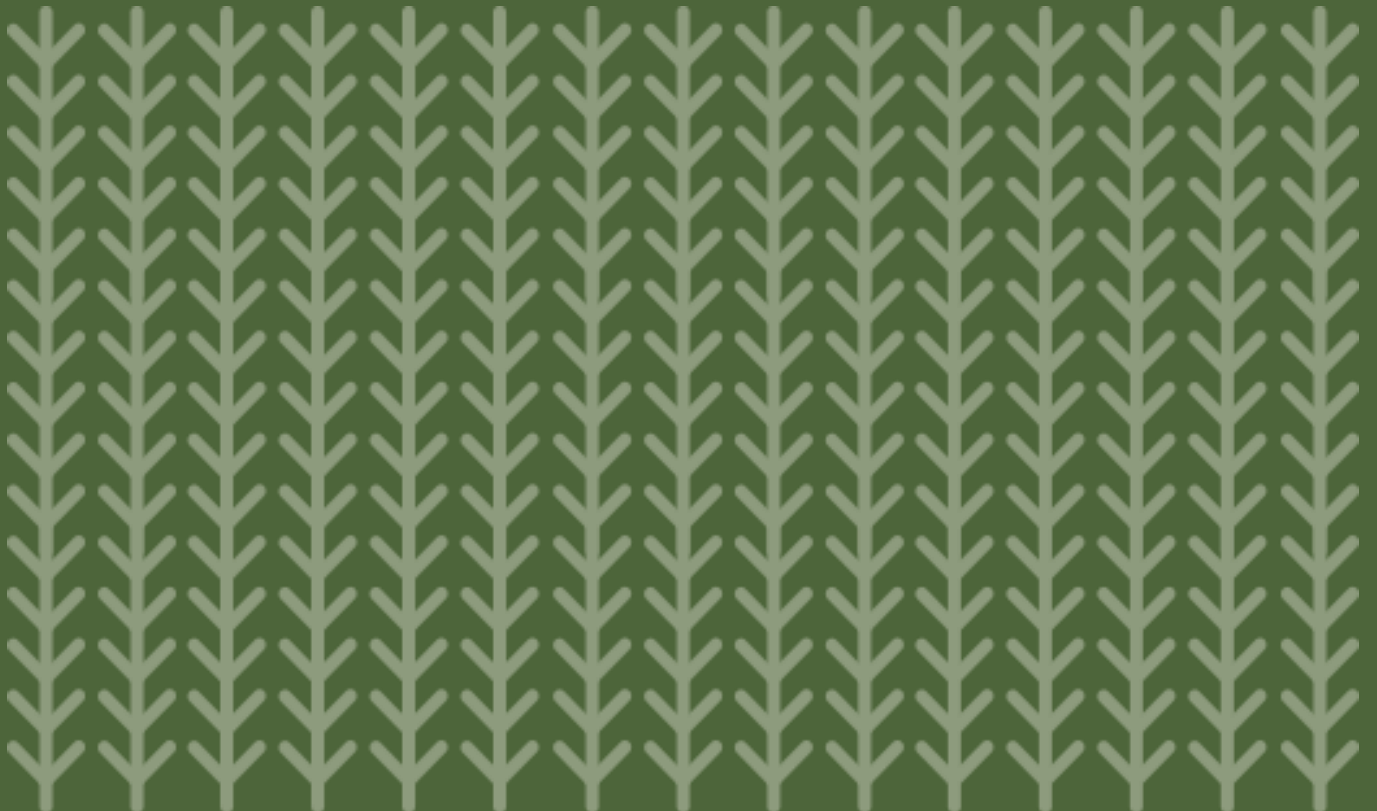




Yirranma  
Place

# Yirranma Place House Rules

'A place of many, a place to engage or create



# **Welcome to Yirranma Place**

We welcome you warmly to Australia's first precinct with social purpose at its heart. We hope you enjoy your visit.





# Terms of Entry.

Yirranma Place is a unique and important piece of Sydney's heritage. To ensure the safety and security of all our visitors and staff and to protect our beautiful building, we ask that you observe our Terms of Entry.

## 1) While in Yirranma Place you

- a. Accept that you enter YP at your own risk and acknowledge that, to the maximum extent permitted by law, YP is not responsible for any loss, damage, harm, or injury arising from your entry to the premises.
- b. Must comply with any direction from YP staff or security, including directions relating to safety or security issues or behaviour that YP staff consider is unsafe or inconsistent with YP values.
- c. Must follow instructional signage regarding safety, consumption of food and drink, hygiene, capacity limits, directional flow, and photography.
- d. Must ensure that equipment and furniture is used only for its intended and ordinary purpose.
- e. Must ensure that a responsible adult accompanies children under 16 years of age and that said adult actively supervises said children at all times.
- f. Must conduct yourself and ensure any children in your care similarly conduct themselves in a manner which, in the reasonable opinion of YP, does not interfere with, disrupt, or offend other persons or engage in appropriate behaviour which may result in injury to themselves or others.
- g. Must keep your strollers, pushchairs and buggies with you or park them in the dedicated parking areas or collapse them for cloaking. Please see YP staff for assistance.
- h. Must stow bicycles in the racks provided.

## 2) Safety and Security

- a. By entering YP, you acknowledge that many spaces are primarily shared workspaces and agree not to do anything which causes interference with the possessions of YP occupants. If you become aware of information relating to YP occupants or their operations, you agree to keep this information confidential and not to disclose it without the consent of the relevant person or organisation.
- b. Yirranma Place reserves the right to:
  - i. Exclude or remove any person from the building or any part of the 262 Liverpool Street site for any reason.
  - ii. Visually or physically inspect any bag or object while you are on YP premises. This may require your assistance to move or remove items from the bag to facilitate our inspection.
  - iii. Prohibit any personal items it deems unnecessary.
  - iv. YP operates Closed Circuit Television (CCTV) cameras throughout YP premises.



- c. Prohibited items may not be brought into Yirranma Place. Prohibited items include:
- i. Large luggage items.
  - ii. Any animal (other than assistance animal accredited under a state or territory law to assist a person with disability to alleviate the effects of disability; or that is accredited by an animal-training organisation).
  - iii. Any kind of real or toy weapon, firearm, or other substance which YP considers dangerous.
  - iv. Aerosol containers, laser pointers, balloons, and drones.
  - v. Any item which, at the direction of YP security, is considered capable of being used to cause damage to our property.

### **3) Things you must not do at Yirranma Place:**

- a. Use or access any part of Yirranma Place other than those areas made available for the open day.
- b. Touch or in any way interfere with artwork or special items on display, unless indicated.
- c. Use any photographic, video or audio recording equipment, including flashes, without permission.
- d. Run, climb, or use furniture for anything else other than its intended use.
- e. Smoke anywhere on the Yirranma Place premises. Please ensure you are more than 7 meters away from any entrance.
- f. Eat or drink (including having containers of food and drink) that have been brought from outside the premises.

### **4) Entry may be denied in certain circumstances. YP reserves the right to deny entry or issue a direction to leave to you and members of your party if:**

- a. You, or members of your party, are argumentative, rude, or aggressive with YP staff and security.
- b. In the opinion of YP staff or security, you or any member of your party fails to abide by the directions of YP staff or security.
- c. You or any member of your party have with you prohibited items in your possession.
- d. In the opinion of YP staff or security, any member of your party appears to have symptoms that may place other people at risk or pose danger to public health.

### **5) Accessibility**

- a. Please see YP staff should you require assistance with mobility and audio accessibility.

*“Arrive curious. Leave inspired.” – Gates Foundation Discovery Centre*