

ENGAGING TRANS COMMUNITIES IN TRANS HEALTH RESEARCH

Dr Michaela Pettie (she/her| Ngāti Pūkenga) & Alex Ker (he/him)

Otago University of Wellington

Research with Pride - Public Talk

12 March 2024



UNIVERSITY
of
OTAGO
Te Whare Wānanga o Otāgo
NEW ZEALAND

— He kupu aumihi

Thank you to all our community advisory group members and interview participants for your generosity in sharing your knowledge and thoughtfulness with us

The healthcare professionals who also generously provided feedback on this survey, too

Our wider research team members - Dr Rona Carroll, Dr Sally Rose, and Sue Garrett.

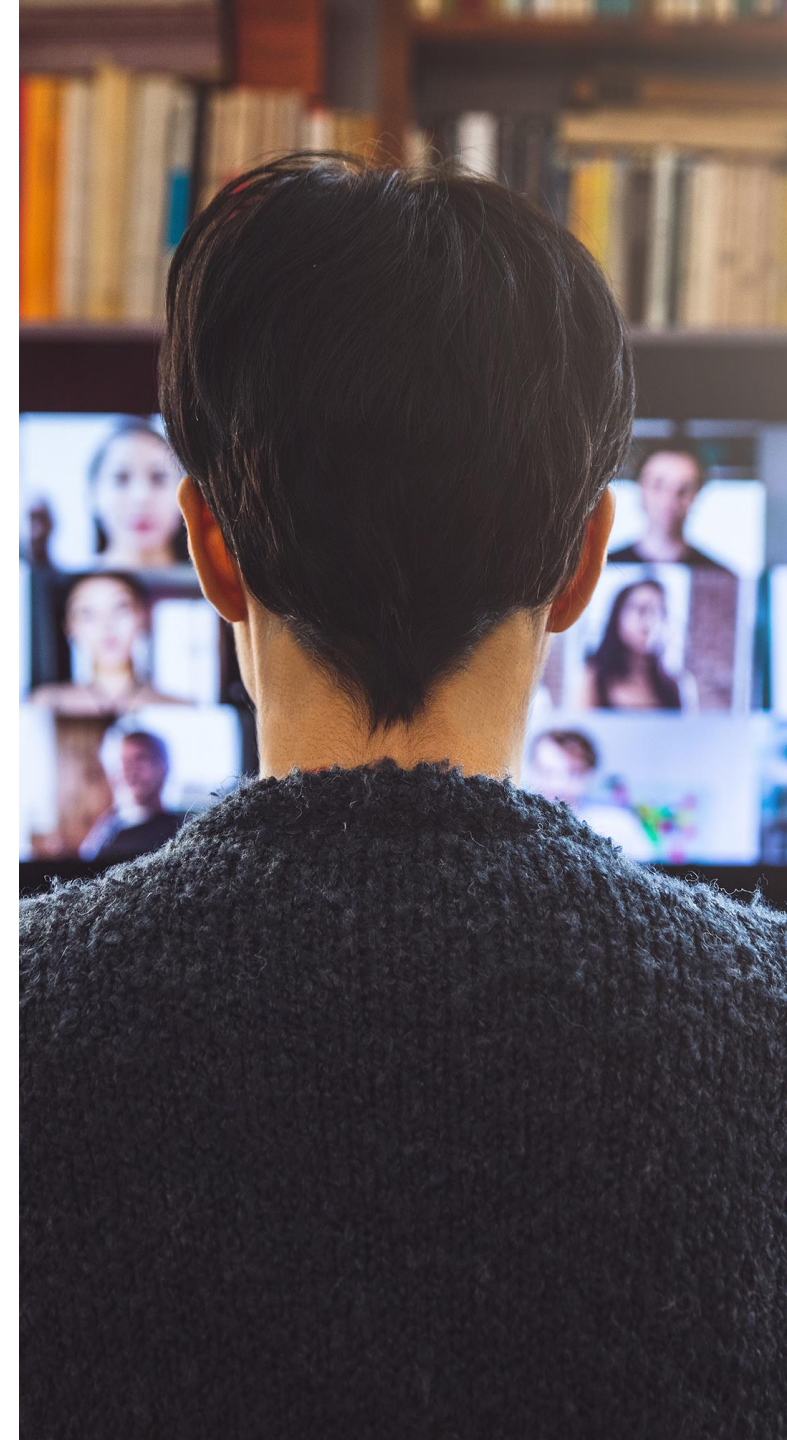


— Importance of engaging with trans communities

Centering trans people's knowledge and experiences is a way of **redressing historic assumptions** about trans people's lived experiences and bodies.

Trans people are **experts** of their own lives and communities, hold diverse experiences and views.

Increases the ability of research to address current and main priorities for trans people (rather than assuming what's important).



— Our project & process

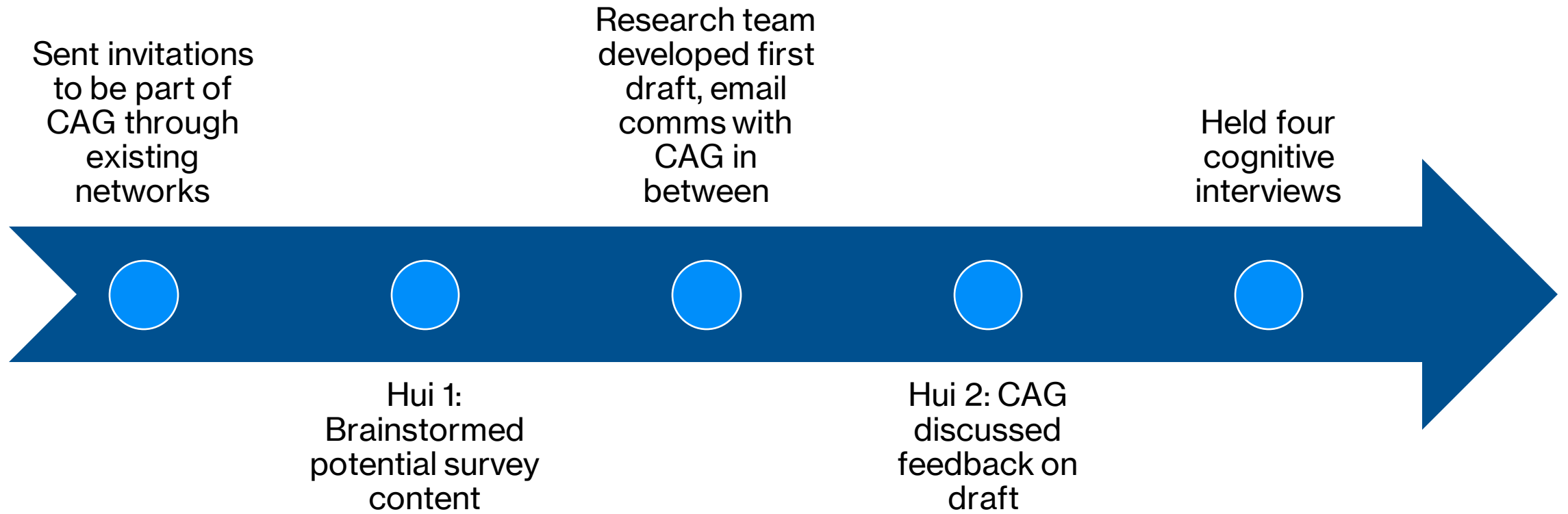
We set out to design a longitudinal survey for trans and non-binary young adults on initiating gender-affirming hormones and long-term outcomes of GAHT.

We invited trans people to form a **community advisory group** via trans-led community organisations and colleagues' networks, aimed for representation from smaller regions.

Held **cognitive interviews** with four people to seek further feedback on experience of taking survey and comprehension.



Community Advisory Group (CAG) & Interview process



Some reflections on...

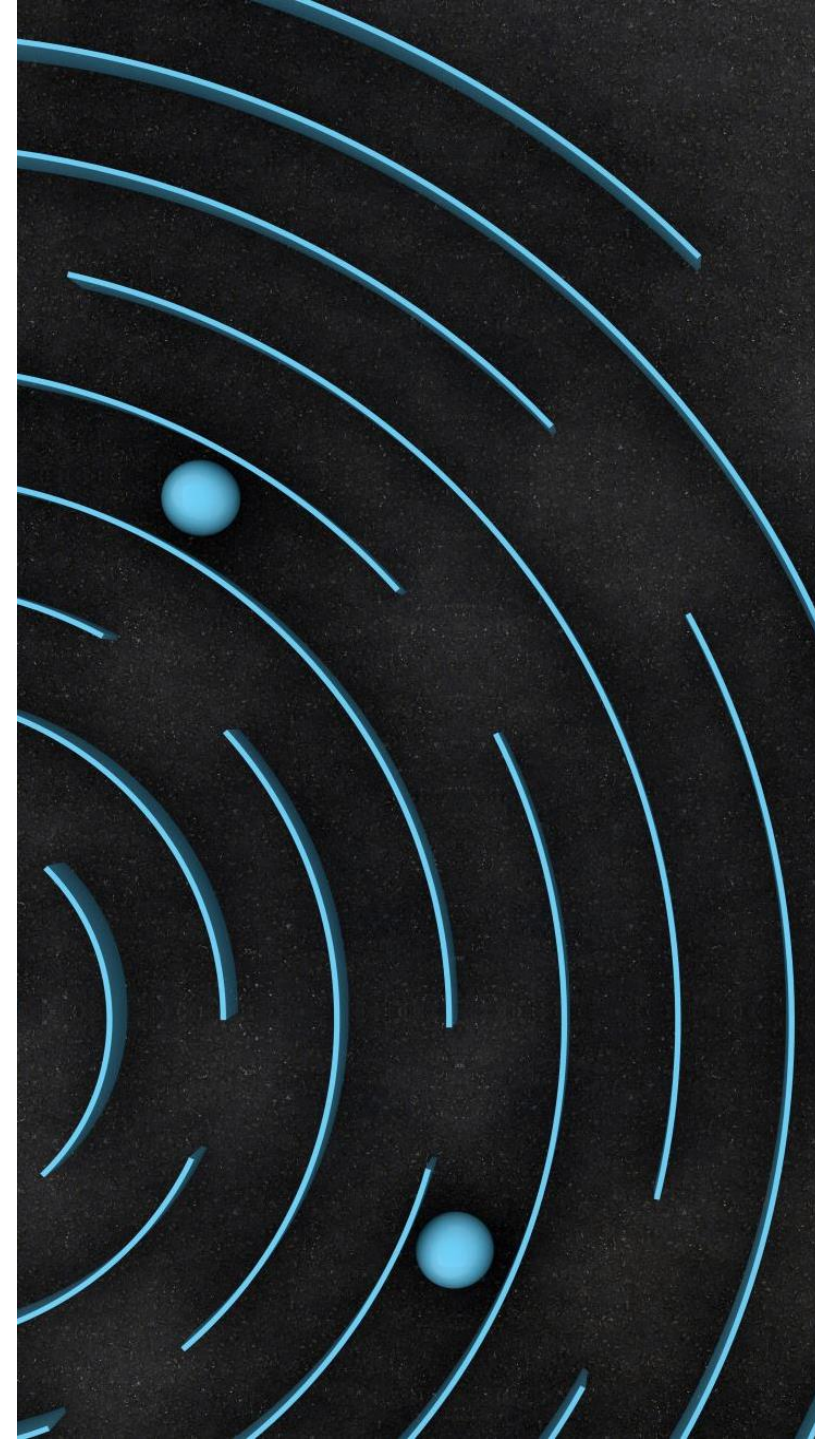
Establishing trust and rapport

Introducing all team members (even if on paper) and establishing connections to Kaupapa.

Ensuring confidentiality and privacy (through ethics processes and reiterating how privacy will be ensured in group).

Creating an **environment of trust** to share experiences

Thinking about **who's facilitating** the sessions and how this impacts what people might share in group settings.



Some reflections on...

Implementing diverse perspectives

Diverse (and sometimes differing) perspectives on issues.

Honouring trans people's experiences, acknowledging that every experience is valued.

Challenges in sharing decision-making equitably when research team and CAG meet at different stages.

Providing clearer processes and rationale for decision-making.

Some reflections on...

Communicating & flow of engagement

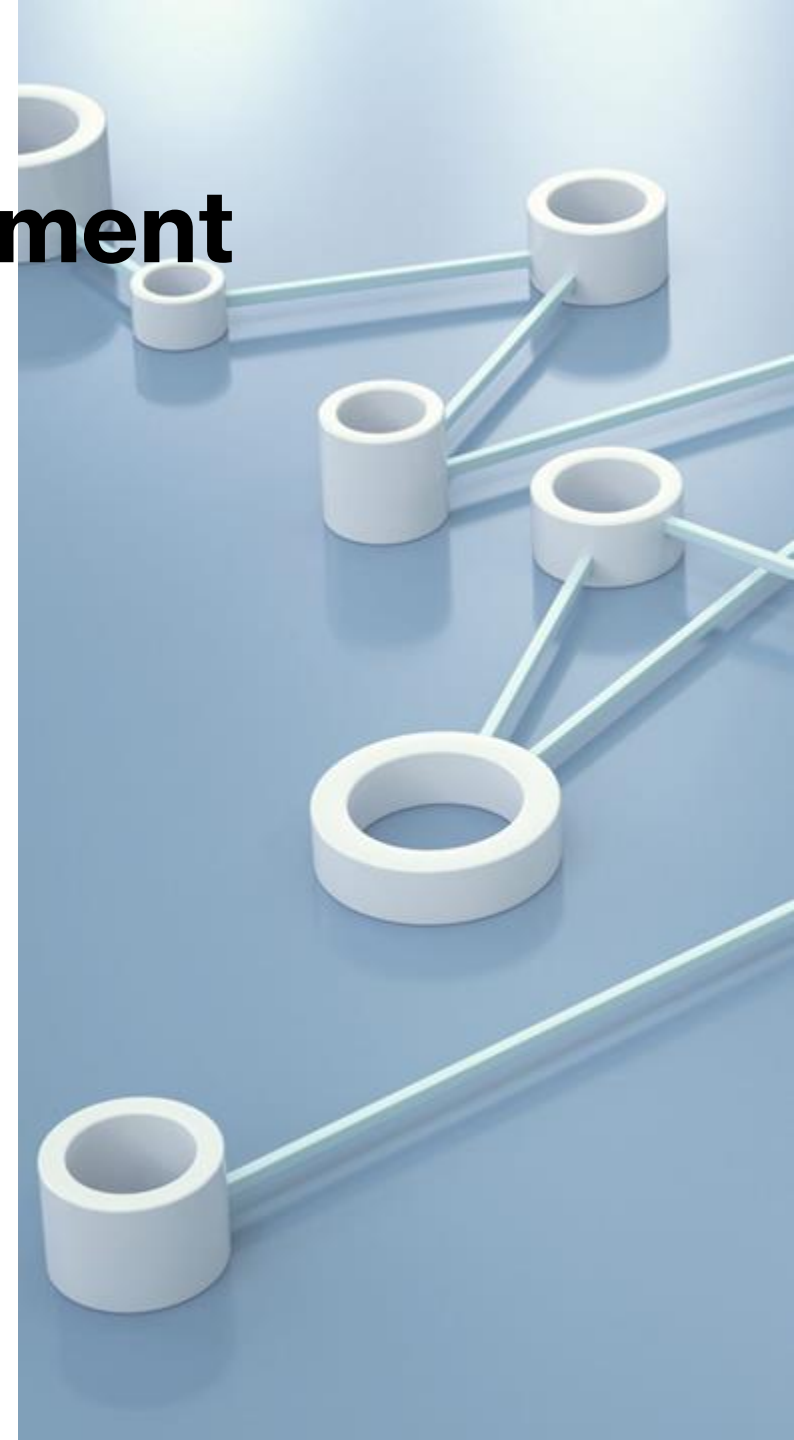
Finding out **what communication works best** individually and collectively.

Using digital platforms to **share ideas and stay in touch** – some might work, others might not!

Building in **flexibility is key** (time-wise and ways of giving feedback).

Being aware of **research burden in trans** communities.

How can we create better **feedback loops to aid more equitable** decision-making?



Strength in bringing together different perspectives & positions

Community & Expert
Advisory Groups

Interview Participants
From Diverse Backgrounds



Research Team of
insiders, outsiders &
in-betweeners

Frontline & People Facing
Professionals

Key Messages

- 1) There are many ways to engage with trans communities, and it is **an ongoing learning process**.
- 2) Engaging with trans (& rainbow) people can **increase the rigour and responsiveness of research** to trans communities' needs.
- 3) **Being flexible and transparent** with community members about engagement processes is important.



What are your or your organisations' current **relationships** with trans communities?

What responsibilities come with these relationships?

What **resources** enable or constrain the types of engagement you're able to do?

How is or will your engagement be **reciprocal** and ongoing?

Ngā mihi nui ki a koutou

Contact us at

michaela.pettie@otago.ac.nz | alex.ker@vuw.ac.nz | rona.carroll@otago.ac.nz