



**MACQUARIE**  
University  
SYDNEY · AUSTRALIA

# 2023 ECR Showcase



WOMEN ARE  
EARNING %  
OF MEN'S  
EARNINGS  
(AGE)

## ACKNOWLEDGEMENT OF COUNTRY

We acknowledge the Traditional Custodians of the land on which Macquarie University stands – the Wallumattagal Clan of the Dharug Nation – whose cultures and customs have nurtured, and continue to nurture, this land since time immemorial. We pay our respects to Elders, past, present and future.



# Three paths, one goal: showcasing the future of research

## WELCOME TO THE EARLY CAREER RESEARCHER SHOWCASE

Run by early career researchers (ECRs) for ECRs, the Early Career Researcher Showcase has been a dynamic and integral part of Macquarie University's academic landscape since its inception in 2020. Created by the University's Early Career Researcher Network, this event stands as a testament to the vitality and creativity of the next generation of scholars.

At the heart of the Early Career Researcher Showcase lies a commitment to celebrating the depth and diversity of early career research at Macquarie University. Bringing together departments and schools from all faculties, this showcase features a rich tapestry of research topics, methodologies and approaches. It aims to be a platform for connection, engagement and the exchange of ideas. For the first time, this year's event showcases finalists presenting in three different categories:

- Research Pitch
- Research Gallery
- Research Reels

We encourage you to immerse yourself in today's showcase, engage with the research on display, and even discover potential synergies and collaborations for yourself. Whether you are a fellow ECR, a more senior research mentor, or a member of the broader Macquarie University community, we extend our warmest welcome.

We would like to thank the Deputy Vice-Chancellor (Research) and the Pro Vice-Chancellor (Research Performance and Development) for their ongoing support of the showcase, and we extend a special thanks to the Researcher Development Team for their immense support in organising this event. Our special gratitude also goes to all the ECRs who have worked diligently throughout 2023 to make this showcase possible, as well as to our sponsors and partners who have supported this endeavour. Together, we illuminate the path for future research endeavours and celebrate the achievements of our ECRs.

2023 ECR Showcase Committee





# Congratulations from the Deputy Vice-Chancellor (Research)



It gives me great pleasure to welcome you to the 2023 Early Career Researcher Showcase, an event where we celebrate the achievements of early career researchers (ECRs) here at Macquarie University.

Our ECRs continuously demonstrate unwavering dedication in pushing the boundaries of knowledge and reaching new heights in their respective fields. Their accomplishments serve as a beacon of inspiration, reminding us of the incredible potential that resides within our academic community.

As we gather at this event, let us acknowledge the fundamental significance of consilience between our four major faculties here at Macquarie University. In coming together, we reinforce our commitment to fostering an inclusive environment where every individual can thrive. It is through collective support and shared aspirations that we overcome challenges and reach our full potential in the pursuit of knowledge and academic excellence.

Once again, I extend my warmest welcome to this event. Congratulations to all finalists. May our collective journey of knowledge and discovery continue to inspire and transform our shared academic future.

**Professor Sakkie Pretorius**  
Deputy Vice-Chancellor (Research)

## PREVIOUS WINNERS

### 2022

**Overall Winner:** Dr Karen Pack, Faculty of Arts

**Title:** *Singularly engaged: The historical erasure of women from Australian church histories and the ongoing impact on LGBTQIA+ people of faith*

**Runner-up:** Dr Rebecca Bachmann, Macquarie Business School

**Title:** *CSR restatements: Mischief or mistake?*

**Second Runner-up:** Dr Elizabeth Austin, Faculty of Medicine, Health and Human Sciences

**Title:** *What is better healthcare, and how might we achieve it?*

**Impact Award:** Dr Ebony Birchall, Faculty of Arts

**Title:** *Doctors in Detention: an impossible position*

Dr Christopher Blade, Faculty of Medicine, Health and Human Sciences

**Title:** *Targeting t-type channels as a non-opioid approach to chronic pain*

**People's Choice Award:** Dr Estefania Giannini, ARC Centre of Excellence in Synthetic Biology

**Title:** *A synthetic biology approach for engineering symbiotic relationships*

### 2021

**Overall Winner and Impact Award Winner:** Dr Rebecca Kuhnert, Faculty of Medicine, Health and Human Sciences

**Title:** *Youth mental health screening in schools*

**Runner-up:** Dr Madelyne Bisby, Faculty of Medicine, Health and Human Sciences

**Title:** *The promise of online single-session treatments for anxiety and depression*

**Impact Award Runner-up:** Dr Fabiola Barba Ponce, Macquarie Business School

**Title:** *Refugee background female leadership, regenerative farming and social business creation*

**People's Choice Award:** Dr Kelly Miles, Faculty of Medicine, Health and Human Sciences

**Title:** *Predicting communication breakdown during social interactions*

### 2020

**Overall winner:** Dr Noushin Nasiri, Faculty of Science and Engineering

**Title:** *Breathe on me...*

**Winner, Faculty of Arts:** Dr Emma Burns

**Title:** *Supporting Adolescents' Academic Success: The Role of Positive Teacher Student Relationships*

**Winner, Macquarie Business School:** Dr Colin Zhang

**Title:** *Financial metrics for comparing Australian retirement villages*

**Winner, Faculty of Medicine, Health and Human Sciences:** Dr Kathleen Yin

**Title:** *Video games, exercise, and 'keeping me sane' during COVID*



# Agenda

THURSDAY 23 NOVEMBER

TIME	SESSION	SPECIAL GUEST
12.30pm	Doors open + Opportunity to view Research Gallery and Research Reels	
1pm	Introduction + Welcome to Country	
1.15pm	Guest Speaker	Professor Sakkie Pretorius
1.25pm	Presentations by Research Pitch finalists	Dr Jenn Fifita Dr Ali Amrollahi Dr Signe Duff Dr Theotime Colin Dr Andreea Heriseanu Dr Husain Akareem
1.50pm	Short break	
2pm	Presentations by Research Pitch finalists	Dr Nicole Jamison Dr Yunwei Zhang Dr Ashfaq Chauhan Dr Paul Crosby Dr Mariam Farida
2.25pm	Guest Speaker	Dr Karen Pack
2.35pm	Short report from Committee Chairperson	Dr Elizabeth Austin
2.45pm	Announcement of winners	
3pm	Networking reception	
4pm	CLOSE	

## MESSAGE FROM THE ECR SHOWCASE 2022 WINNER, DR KAREN PACK

My experience at the ECR Showcase was important in making connections between research and its real-world impact. At times, doing academic research can feel like a silo-ed existence; it is easy at times to question why it matters. Participating in the ECR Showcase forced me to make those connections explicit – to connect my research into historical erasure with contemporary debates about religious discrimination and the rights of the LGBTQ+ community. Since then, I have been invited to speak to a variety of industry and faith groups, including meeting with MPs and government officials, and giving the keynotes at the national conference of Spiritual Care Australia. I am grateful for the experience, and the mentoring I received, as well as the opening up of new horizons for advocacy, research and connection.





# 2023 ECR Showcase Competition

## FINALISTS

---



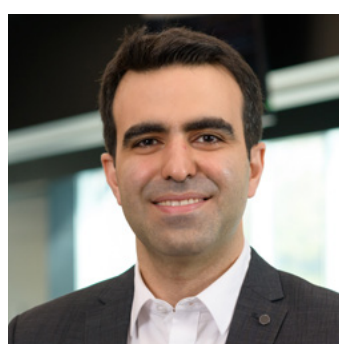
### **Husain Akareem**

#### **Lecturer | Macquarie Business School | Research Pitch**

Dr Husain Akareem has published research papers in top-tier journals, including the *International Journal of Research in Marketing*, *Journal of Marketing Management* and *Journal of Services Marketing*. His research focuses on customer engagement and psychological motivations to understand various cultural contexts worldwide and explore the use of technologies in service consumption.

His study explores consumers' psychological motivations for debt repayment. Its aim is to develop a conceptual model for fostering a prosperous economy using text analytics. Seeking to understand why a high credit score increases the likelihood of timely debt repayment, this project garners the attention of consumer debt researchers and financial organisation managers alike.

---



### **Ali Amrollahi**

#### **Lecturer | Macquarie Business School | Research Pitch**

Dr Ali Amrollahi is a lecturer of Business Information Systems at Macquarie Business School, specialising in technology's social and organisational impacts, including digital leadership and the future of work. His globally collaborative research has not only been published in top-tier journals but has also gained media attention.

His research study utilises a database of 250 million job advertisements from around the world to examine the ways in which gender is specified and whether this can combat inequity. It seeks to assess the effectiveness of positive discrimination in mitigating historic and cultural inequality in employment. Specific focus is on positive discrimination, the practice of favouring individuals from groups that have historically been discriminated against or are underrepresented in specific roles or industries, aiming to address inequality or historical disadvantage.

---



### **Daryl Ariawan**

#### **Research Fellow | Faculty of Medicine, Health and Human Sciences | Research Reels**

Dr Daryl Ariawan is a postdoctoral researcher at the Dementia Research Centre. Her research focuses on developing novel peptide therapeutics for treatment of Alzheimer's disease. She completed her PhD at UNSW Sydney in the field of organic medicinal chemistry.

In her research, Daryl directs focus on the blood-brain barrier, a semipermeable border that regulates the transfer of chemicals between blood and brain, which protects the brain from harmful substances. However, the presence of this barrier makes it difficult to deliver drugs when needed; for example, in Alzheimer's disease. Daryl's research utilises proteins, a naturally occurring substance in the human body, to build a novel delivery system made of circular mini proteins to successfully deliver therapeutic sequences that protect neuron cells from toxic agents.

---



**Elizabeth Austin**  
**Research Fellow | Faculty of Medicine, Health and Human Sciences |**  
**Research Gallery + Research Reels**

Dr Elizabeth Austin, BA Psychology (Hons), PhD, is an early career researcher at Macquarie University's Australian Institute of Health Innovation. Austin specialises in integrating psychological theories with complex systems and human factors analysis to enhance quality, safety and sustainability in complex systems, especially in emergency departments (EDs).

Her study is the first to apply the Cognitive Work Analysis Framework to understand and improve ED care interactions such as between clinicians and technology, or between clinicians and patients – specifically in response to surges in demand for ED services along with shortages in resources. Application of this robust complex systems tool provides a platform for creative innovation and collaboration within an ED, as well as sharing innovations across EDs nationally and internationally. This helps human factors experts, clinical agencies, frontline workers and patients work together to design better care.



**Rebecca L Bachmann**  
**Lecturer | Macquarie Business School | Research Gallery**

Dr Rebecca L Bachmann is a lecturer in the Department of Corporate Governance and Accounting and focuses on research in the areas of sustainability reporting practices of Australian firms, gender diversity and executive compensation. Her work has been featured in a number of media outlets including *The Sydney Morning Herald*, *The Australian Financial Review* and *BOSS* magazine.

Her study is motivated by the concern that the average ASX 200 company spends 50 per cent less on research and development than the global average, potentially because there is little incentive for CEOs to encourage innovation. This can be detrimental as interest rates continue to rise, especially as innovation is a key driver of economic growth contributing significantly to national GDP. Ultimately, a lack of investment in innovation by major companies can hinder job creation, wage growth and overall economic stability, affecting individuals' livelihoods and financial wellbeing, as well as Australia's global competitiveness.



**Ashfaq Chauhan**  
**Research Fellow | Faculty of Medicine, Health and Human Sciences |**  
**Research Pitch**

Dr Ashfaq Chauhan is a Postdoctoral Research Fellow and health services researcher at AIHI. He is a physiotherapist with more than 12 years clinical experience and training in health management and public health. His research focuses on improving patient safety and quality outcomes for priority population groups and consumer involvement in research.

His study highlights that at least 250,000 hospital admissions annually in Australia are related to medication harm, with an estimated cost of \$1.4 billion. The Making-it-Meaningful (MiM) instrument is an innovative medication education tool developed in collaboration with patients and clinicians of cancer services to reduce medication-related harm. Ashfaq's research tests the effectiveness of the MiM among patients with cancer from diverse ethnic backgrounds in improving their engagement in managing their medications (Resilient Societies), reducing medication-related harm (Healthy People) and associated preventable hospital admissions (Prosperous Economies).

---



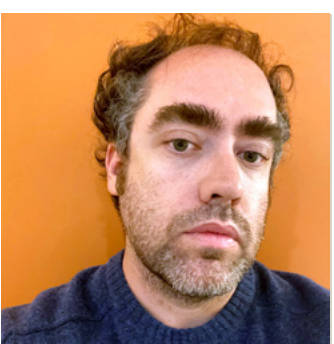


### **Theotime Colin**

#### **Research Fellow | Faculty of Science and Engineering | Research Pitch**

Dr Theotime Colin is a social insect scientist specialised in applied honeybee research and precision apiculture. His research aims at understanding the mechanisms of colony homeostasis to improve the health of honeybees. With this knowledge, he develops modern tools to quantify stress and measure colony health remotely using hive sensors.

His study highlights that although bees are essential pollinators of our most nutritious food crops, they are exposed to a cocktail of increasingly toxic pesticides while visiting flowers. His research develops a new approach to reducing pesticide use without losses in food production. It is based on a small shift in focus, from killing pests to protecting crops. The difference is subtle, but applying a dose that paralyses most pest insects instead of killing all insects is all we need to protect crops. This shift leads to a dramatic change in the amount of pesticides that farmers and pollinators are exposed to and that may leak into the environment.



### **Paul Crosby**

#### **Senior Lecturer | Macquarie Business School | Research Pitch**

Dr Paul Crosby is a Senior Lecturer in economics. He is an applied microeconomist with research interests in the economics of digitisation, entertainment and culture. Paul's work has been published in leading international, peer-reviewed economics journals and featured in media outlets such as *The Wall Street Journal* and *Fortune* magazine.

Paul's study addresses the concern that major online retailers discourage publishers from licensing ebooks to public libraries, alleging negative effects on sales. Despite the importance of libraries to local communities, data to back up this claim is kept under tight wraps by retailers. To investigate this, his research adopted an inventive approach: establishing their own publishing house and reviving 161 culturally important Australian books. His research shows libraries' capacity to boost book sales, reinforcing their pivotal role in fostering resilient societies – since 2021, more than 20,000 sales or loans generated more than \$100,000 for authors.



### **Alescia Cullen**

#### **Research Fellow | Faculty of Science and Engineering | Research Reels**

Dr Alescia Cullen is a Postdoctoral Fellow researching the use of photosynthetic bacteria (cyanobacteria) as a carbon-reducing alternative for biomanufacturing. She works with Distinguished Professor Ian Paulsen in the ARC Centre of Excellence in Synthetic Biology.

Her study highlights the urgent need to combat anthropogenic climate change, driven by rising CO<sub>2</sub> levels. It aims to help meet demands for increased adoption of carbon-reducing technologies. Cyanobacteria are photosynthetic bacteria capable of removing CO<sub>2</sub> from the atmosphere. However, they remain underutilised in the biomanufacturing industry due to slow growth and limited genetic engineering tools. Specifically, the research aims to accelerate cyanobacterial growth, boost production of industrially valuable compounds (eg terpenoids) and expand the genetic tools available to engineer cyanobacteria. Ultimately, this research strives to synergise carbon reduction with biomanufacturing, paving the way for a sustainable future.

---





**Laisa de Siqueira Umpierrez**  
**Research Fellow | Faculty of Medicine, Health and Human Sciences |**  
**Research Reels**

Dr Laisa de Siqueira Umpierrez holds a PhD in Psychology and works as a Postdoctoral Research Fellow in Perry's Labgroup at Macquarie University. Her research interests involve understanding the brain and behavioural effects of new therapeutic interventions for substance use disorder.

In her study, she seeks to inform public health initiatives around relapse prevention. Highlighting that people with alcohol use disorder face alcohol-related images almost daily, these cues trigger powerful craving and this response becomes more intense the longer a person remains abstinent. This phenomenon is termed 'incubation of craving', which can cause relapse. The preclinical lab has shown that exercise can reverse incubation of craving in a rodent model. Exercise is readily implemented in a clinical setting; however, the timeline is not yet well understood. Does it prevent the development of incubation or reverse it once developed? How durable are these effects?



**Signe Duff**  
**Associate Lecturer | Faculty of Arts | Research Pitch**

Dr Signe Duff is Swedish-Australian and is an Associate Lecturer in educational psychology in the School of Education at Macquarie University. Her research concerns children's spatial reasoning acquisition, with her PhD thesis focusing on optimising opportunities for spatial reasoning development within existing educational structures.

Her study is motivated by the latest NAPLAN report which provided worrying results: by Year 3, more Indigenous, remote and female students need extra support in numeracy than non-Indigenous, city-based and male students. What if we could change this trajectory early, working towards 'resilient societies' through societal transformation? Signe's research concerns spatial reasoning, a skill that can be taught from an early age and relates to STEM achievement. Often, females and children from low-SES backgrounds have lower spatial reasoning skills. The research specifically considers how to incorporate additional experiences in existing educational structures, and how easily accessible resources such as television can be used to maximise support.



**Mariam Farida**  
**Lecturer | Faculty of Arts | Research Pitch + Research Gallery**

Dr Mariam Farida is a lecturer in terrorism studies. Her work focuses on religious mobilisation and ideology. She has conducted fieldwork into the recruitment of non-state actors and the transformation of non-state actors from violence to politics. Her recent project focuses on the weaponisation of religious myths and gendered narratives in Shi'ite Islam.

Using ethnographic observation and semi-structured interviews, her study investigates how mythical stories have been successfully weaponised by extremist groups to cast strategic gender roles as key mobilising factors for women. This is motivated by the ongoing, high-stakes debates about how to deal with ISIS women repatriated back to Australia. These debates have tended to be relatively uninformed, not recognising the complexity behind women engaging with violent groups. It is crucial to have better understanding because it offers a unique look into gender and terrorism, as narratives around women's engagement with terrorism are limited to militancy or victimhood.

---





### **Yimeng Feng**

#### **Lecturer | Faculty of Science and Engineering | Research Gallery**

Dr Yimeng Feng joined the School of Computing at Macquarie University in July 2023 as a Lecturer in Computing (IoT and Networking). Before that, she was a Postdoctoral Research Associate at UNSW. She received her dual PhD degrees from the University of Technology Sydney and Beijing University of Posts and Telecommunications.

Yimeng's study recognises that the development of 5G and the Internet of Things is associated with great potential for future transportation systems. Current roads lack efficient ways to provide real-time traffic information. For example, there is scope for vehicle speeds and traffic flow information to be managed in a smart way. Moreover, camera-based tracking technology increases the risk of privacy leakage. One potential solution is the use of wireless sensors on roads to provide traffic management service to industry partners such as NSW Transport, for traffic management, and provide AI companies with essential road traffic information to aid autonomous driving.



### **Jenn Fifita**

#### **Research Fellow | Faculty of Medicine, Health and Human Sciences | Research Pitch**

Dr Jenn Fifita completed her PhD investigating the genetics of motor neuron disease (MND) at Macquarie University in 2017. She has since continued this research, focusing on innovative strategies to identify critically understudied forms of complex genetic variation in MND. Jenn has had two periods of extended parental leave for the birth of two daughters, and now balances their care, her research and a passion for HDR and junior colleague supervision and mentorship.

Her study highlights that, even though gene mutations serve as immediate diagnostic indicators of MND and uncover complex disease mechanisms, the genetic landscape of this devastating disease remains vastly unknown. With the drive towards Healthy People for all, her research aims to adapt innovative research strategies to identify critically understudied genomic variation in the genomes of MND patients. The uncovering of complex pathogenic mechanisms feeds into development of novel treatments for this virtually untreatable disease.



### **Magali Goirand**

#### **Research Fellow | Faculty of Medicine, Health and Human Sciences | Research Gallery**

Dr Magali Goirand spent 25 years working in the high-tech industry in various roles, including about 20 years in San Francisco. In 2018, she moved to Australia to study applied Buddhism at Nan Tien Institute before embarking on her PhD journey at the Australian Institute of Health Innovation at Macquarie University in 2020. Her PhD (completed in August 2023) focuses on how to implement ethics in medical AI using systems thinking. She is a systems thinking practitioner and learning facilitator.

In response to the rise in medical AI and ethical challenges with far-reaching implications, her study explores how to implement ethics in a COVID-19 medical AI app. Anchored in critical systems thinking, a methodology was developed to conduct the participatory process for implementing ethics mapping the flow of knowledge between agents of the patient-clinician-AI system. This program of research has significant implications for policy and practice including provision of a methodology for implementation of ethics in medical AI, and identification of key considerations for reporting on ethics implementation.

---





### **Tim Jackson**

#### **Research Fellow | Faculty of Medicine, Health and Human Sciences | Research Gallery**

Dr Tim Jackson is a Postdoctoral Research Fellow at the Macquarie University Australian Institute of Health Innovation. He is currently exploring the patient experience of virtual hospitals in Australia. His goal is to explore and create new technologies that provide the same level of care in a hospital for the home.

Virtual care has provided an unprecedented level of access to healthcare across Australia and has empowered patients to take a more active role in their own health. This is in no small part due to Australia's response to the COVID-19 pandemic. To monopolise on the current momentum of virtual care solutions, Tim's study seeks to examine current solutions within the Sydney Local Health District to better understand what has worked and what can be improved. His research takes advantage of several different methods, such as data analysis techniques, interviews and a series of collaborative focus groups to better understand virtual care.



### **Nicole Jamison**

#### **Lecturer | Faculty of Arts | Research Pitch**

Dr Nicole Jamison is a Lecturer in early childhood education. She previously taught and researched in early childhood, primary and tertiary settings in Canada and the UK. Her teaching and research specialises in children's play, arts-informed and creative pedagogies and methodologies, and reconceptualist and intercultural practices in early childhood.

In her study with young immigrant children, Nicole pays close attention to their play and art-making, recognising that children's play and art are important ways they communicate ideas, feelings, experiences and perspectives. These foregrounded personally significant migration experiences, complexities of identity, gender, culture, barriers and supports. Her work highlights the need for intentional noticing of these activities to better understand young newcomer children as their perspectives are often overlooked; their teachers lack knowledge of their out-of-school lives and relevant culturally responsive practices. With continued growth of diversity in early years contexts, better understanding is needed to understand and help shape their development, socialisation and wellbeing.



### **Priyanka Rana**

#### **Research Fellow | Faculty of Medicine, Health and Human Sciences | Research Gallery + Research Reels**

Dr Priyanka Rana is a Postdoctoral Research Fellow at the Centre for Health Informatics, AIHI. She obtained her PhD in Computer Science from UNSW and was the recipient of the Women in Engineering Research and Australian Government Research Training Program scholarships. Her research constituted analysis of microscopic images using AI methods for understanding various cell-related phenomena relevant to pathological conditions.

Her study is motivated by the concerning statistic that melanoma, an aggressive skin cancer, has a recurrence rate of more than 60 per cent. Immunotherapies are designed to boost the immune system to fight cancer, but many patients do not respond to them. Her research project uses artificial intelligence and computer vision to analyse images of melanoma cells and tissues to predict their response to immunotherapy. Collaborating with the Melanoma Institute Australia, her team is establishing Australia's first clinical translational testbed for AI algorithms in melanoma. The project's goal is to enhance the wellbeing of patients by delivering personalised and effective treatment choices, thereby contributing to improved health outcomes.

---





### **Diana Tan**

#### **Research Fellow | Faculty of Arts | Research Gallery**

Dr Diana Tan (PhD, Psychology) is an autism researcher whose research focuses on understanding cognitive mechanisms associated with non-autistic people's stigma towards autism. She aims to translate her research findings into developing effective strategies to mitigate autism stigma across various settings, including in higher education.

Her study focuses on understanding factors associated with the social inclusion and exclusion of autistic and otherwise neurodivergent students at universities. The latest census data show that neurodivergent students are four times less likely to hold a bachelor degree or higher than other students. Using quantitative and qualitative methods, Diana's research directly addresses a pressing need to understand how we – as a university community – can promote an inclusive educational environment for neurodivergent students.

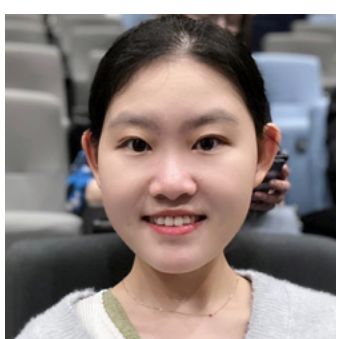


### **Dr Andreea Heriseanu**

#### **Lecturer | Faculty of Medicine, Health and Human Sciences | Research Pitch**

Dr Heriseanu (DClinPsych and PhD) is a Postdoctoral Research Fellow and Clinical Psychologist at the eCentreClinic, Macquarie University. Her research focuses on optimising psychological and behavioural interventions for co-occurring mental and physical health conditions. She has published in top-tier journals such as *Clinical Psychology Review*, and she has lectured across multidisciplinary programs.

Her study directs focus to cardiovascular disease, the leading cause of death. Unfortunately, one in three Australians with cardiovascular disease also have depression, a major risk factor for worse disease outcomes. This problematic co-occurrence interferes with recommended treatment: those with depression are less likely to make key health behaviour changes, while depression treatment does not necessarily shift health behaviours. Heriseanu's research seeks to address this critical issue by systematically examining, for the first time, the independent and cumulative effect of different intervention components, as well as considering individual patient needs – in other words, “what works for whom” for cardiovascular risk and depression.



### **Yunwei Zhang**

#### **Research Fellow | Faculty of Science and Engineering | Research Pitch**

Dr Yunwei Zhang is passionate about turning good science into tangible real-world benefits. Her interdisciplinary research aims to translate statistical models and data analysis into impactful solutions for challenges in health; for example, discovering how to better allocate deceased donor kidneys in Australia.

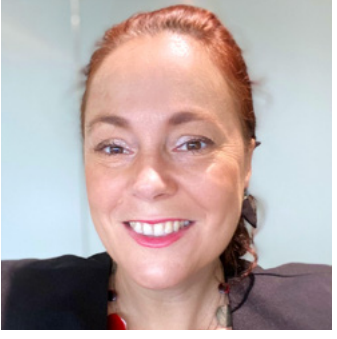
Using advanced biostatistical techniques for big data and translational medical research, Yunwei's study pioneers the use of statistical and machine learning methods to enhance personalised healthcare for various diseases, such as kidney, diabetes and cardiovascular diseases. Evidenced by successful collaborations, specialist recognition and policy inclusions, this work underscores the impact of biostatistical approaches in precision medicine, and demonstrates the positive transformations in the realm of personalised healthcare.

---



# JUDGES

---



**Katrina Avery**  
**Director of Partnerships | Macquarie University**

A lawyer and senior professional with more than 20 years of experience in the legal, commercial and higher education sectors across Australia, Europe and the UK, Katrina Avery is part of the Research, Innovation and Enterprise leadership team. Ms Avery plays a pivotal role in shaping the strategic and operational direction of partnerships between external organisations and the University. Her focus is on fostering multidimensional, interdisciplinary collaborations that reach across the University. Leading the Macquarie Partnerships team, which includes the Research Partnerships and Corporate Engagement teams, Ms Avery facilitates connections between the University, industry and government to maximise the impact of the University's research and innovation, education and employability, and corporate offerings and capabilities.

---



**Madelyne Bisby**  
**Research Fellow and Clinical Psychologist | eCentreClinic, School of Psychological Sciences**

Dr Madelyne Bisby specialises in the development and evaluation of innovative online treatments for mental health difficulties. Their research encompasses three primary areas: redefining the measurement of psychological distress, unravelling the mechanisms of psychological treatments, and pioneering ultra-brief psychological interventions. Dr Bisby is also actively engaged in the creation, execution and evaluation of concise psychological treatments at the government-funded MindSpot Clinic, Australia's largest digital mental health service. Dr Bisby's work bridges experimental insights and clinical research, striving to enhance the accessibility and efficacy of mental health services.

---



**Louise D'Arcens**  
**Professor of English and Deputy Dean Research and Innovation | Faculty of Arts**

Louise is an accomplished researcher with a focus on medievalism, which investigates how post-medieval societies interpret and shape perceptions of the Middle Ages, impacting contemporary culture, politics and society. Louise's current work centres on analysing comic depictions of the medieval era, exploring the enduring emotions transcending time, and tracing the influence of medieval ideals in modern political contexts. Louise has also contributed significantly to understanding the lasting legacy of the Middle Ages in Australian culture. While her 1997 PhD thesis delved into political and literary authority in medieval women's writings, her ongoing scholarly contributions encompass 15th-century French writer Christine de Pizan and her works.

---



**John Dumay**  
**Professor of Accounting and Finance | Department of Accounting and Corporate Governance**

John Dumay is a Professor of Accounting and Finance at Macquarie Business School. He is also an Honorary Professor at Nyenrode Business Universiteit and an Adjunct Professor at Aalborg University Business School. John is a critical scholar researching modern slavery, sustainability, intellectual capital and corporate disclosure. He has published more than 150 peer-reviewed publications, including articles, book chapters and books. John's work is highly cited, and a Stanford University study recognises him as one of the top two per cent of scientists globally. In 2020, 2022 and 2023, *The Australian* newspaper recognised John as Australia's leading accounting scholar. He is an Associate Editor of the highly regarded *Accounting, Auditing and Accountability Journal* and *Meditari Accountancy Research* and a Deputy Editor of *Accounting and Finance*.

---





### **Michelle Haron**

#### **National Research Assessments Manager | Deputy Vice-Chancellor (Research) Portfolio**

Dr Michelle Haron and her team have been responsible for facilitating the submission of Macquarie's Excellence in Research for Australia and Engagement and Impact (EI) submissions to the ARC. Michelle is particularly interested in how impact from publicly funded research can be demonstrated. Over the past three years, Michelle has developed and delivered training materials and workshops to help researchers understand, capture and articulate different kinds of impact from their research. She loves seeing all the ways in which Macquarie's research is impacting our disciplines, the people our researchers work with, our understanding of the world and many of the problems we face.

---



### **Angie Kelly**

#### **The Lighthouse Editor | Macquarie University**

Angie serves as the launch editor of *The Lighthouse* ([lighthouse.mq.edu.au](http://lighthouse.mq.edu.au)) at Macquarie University, where she strategically shapes the University's narrative around groundbreaking research. Leading a team of experienced news journalists, Angie creates the delivery of content that brings an academic perspective to current news topics. Publishing daily, *The Lighthouse* promotes Macquarie University's news to a vast network of more than one million social media followers and 120 mainstream media outlets. Angie's career began in the newsrooms of *The Daily Telegraph* and *The Australian*, followed by roles in the media departments of NSW Health and the University of Sydney. Angie subsequently worked as a section editor at Fairfax Media (now Nine) across various domains, including health, education, property, travel, entertainment and general news.

---



### **Jincheol Kim**

#### **Research Fellow | School of Engineering**

Dr Jincheol Kim is a distinguished researcher in photovoltaic engineering with a strong academic background. Jincheol holds bachelor and master degrees from Seoul National University and earned his PhD from the University of New South Wales (UNSW) in 2018, focusing on high-performance perovskite photovoltaic (PV) devices. Following his doctoral work, Jincheol was awarded an Australian Centre for Advanced Photovoltaics postdoctoral fellowship at UNSW, concentrating on perovskite-silicon tandem solar cells. Dr Kim then served as a senior researcher at the Korea Electronics Technology Institute, where he led research on advanced perovskite-Si PV tandem modules. Currently, Jincheol is a Research Fellow at Macquarie University, contributing to the advancement and commercialisation of PV devices.

---



### **Diana Matovic**

#### **Postdoctoral Research Fellow | School of Psychological Sciences**

Dr Diana Matovic's research interests encompass dementia prevention, geriatric mental health and affect-related social cognition. Diana's doctoral research explored the impact of mood on social cognition and communication, including information provision, ambiguity detection, framing, impression creation, and questioning strategies. In her postdoctoral work, Diana oversees diverse projects in primary care settings, targeting the prevention and treatment of risk factors for poor wellbeing and dementia in older adults. These projects involve assessing attitudes towards screening for mental disorders and risk factors, optimising risk information presentation, and utilising primary care data for risk screening and reduction interventions. Diana also investigates social participation, mental health and wellbeing in older adults with healthy cognition and those with mild cognitive impairment or dementia, along with the mechanisms underpinning positive mood in older individuals.

---





### **Clare Monagle**

#### **Professor Modern History | Department of History and Archeology**

Professor Clare Monagle, a graduate of Monash and Johns Hopkins Universities with a PhD obtained in 2007, has a rich academic background. Clare worked at Monash University from 2007 to 2014 and joined Macquarie University in late 2014. Clare's research interests span the history of intellectuals in the Middle Ages, focusing on the institutions that nurtured them. Presently, her work delves into the utilisation of gendered categories in scholastic thought from 1150 to 1520. Clare also explores the concept of medievalism in contemporary thought, examining how it is employed in defining notions of modernity and progress in the 20th and 21st centuries.



### **Helen Wolfenden**

#### **Lecturer in Radio | Department of Media, Communications, Creative Arts**

Dr Helen Wolfenden brings extensive experience as a radio broadcaster with the Australian Broadcasting Corporation (ABC) and the British Broadcasting Corporation (BBC). Helen's doctoral research delved into the construction of on-air identities by ABC radio presenters. Helen's practice-based research interests encompass podcasting, audiobooks and broadcast radio. She also explores the synergy between professional and academic knowledge, exploring how they can mutually inform and benefit each other. Helen's work bridges the practical world of spoken word audio with the academic realm, facilitating a holistic understanding of the affordances of this dynamic media.

---

## COMMITTEE

**Dr Elizabeth Austin** | Australian Institute of Health Innovation, Faculty of Medicine, Health and Human Sciences | **Committee Chairperson**

**Dr Rebecca Bachmann** | Department of Accounting and Corporate Governance, Macquarie Business School | **Marketing and Communications Coordinator**

**Dr Tim Jackson** | Centre for Human Informatics, Australian Institute of Health Innovation, Faculty of Medicine, Health and Human Sciences | **Event Coordinator**

**Dr Muhammad Atif** | Department of Accounting and Corporate Governance, Macquarie Business School | **Judges and Prizes Liaison, Research Gallery Team**

**Dr Karol Binkowski** | School of Mathematical and Physical Sciences, Faculty of Science and Engineering | **Judges and Prizes Liaison, Research Reels Team**

**Dr Charlene Chen** | Department of Accounting and Corporate Governance, Macquarie Business School | **Presenter Liaison, Research Pitch Team**

**Dr Alana Fisher** | School of Psychological Sciences, Faculty of Medicine, Health and Human Sciences | **Marketing and Communications Liaison, Research Pitch Team**

**Dr Dan Luo** | Australian Institute of Health Innovation, Faculty of Medicine, Health and Human Sciences | **Marketing and Communications Liaison, Research Gallery Team**

**Dr Rezwanul Rana** | Macquarie University Centre for the Health Economy, Macquarie Business School | **Event Liaison, Research Gallery Team**

**Dr Diana Tan** | Macquarie School of Education, Faculty of Arts | **Presenter Liaison, Research Gallery Team**

**Dr Chun Yuen (Jerry) Wong** | Macquarie Medical School, Faculty of Medicine, Health and Human Sciences | **Judges and Prizes Liaison, Research Pitch Team**

**Dr Ying Xu** | Centre for Health Systems and Safety Research, Australian Institute of Health Innovation, Faculty of Medicine, Health and Human Sciences | **Event Liaison, Research Reels Team**

**Dr Jessica Zhang** | Department of Accounting and Corporate Governance, Macquarie Business School | **Event Liaison, Research Pitch Team**

**Dr Fiona Zheng** | Macquarie School of Education, Faculty of Arts | **Presenter Liaison, Research Reels Team**





**MACQUARIE**  
University  
SYDNEY · AUSTRALIA