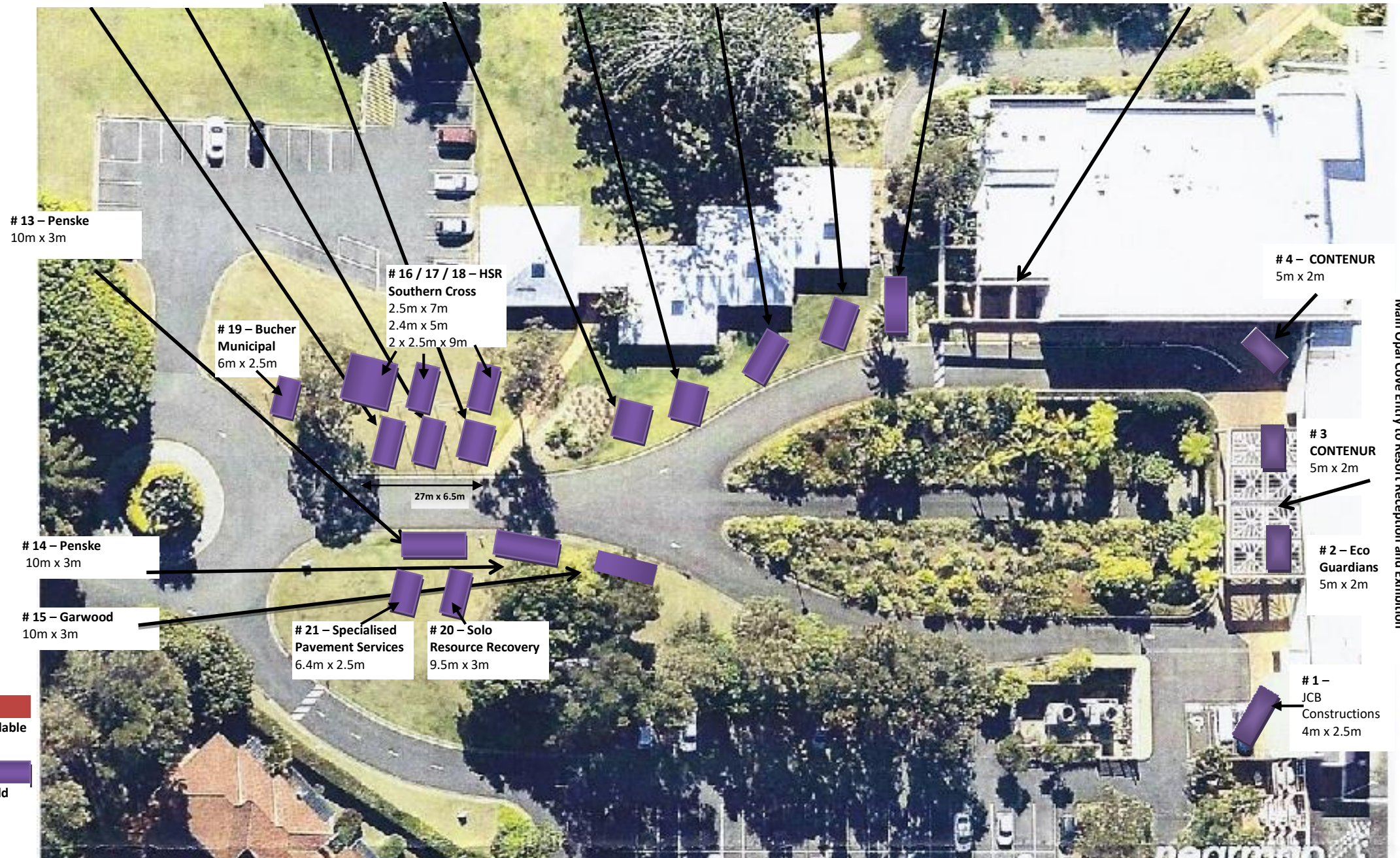


- # 12 – Bucher Municipal
10m x 2.5m
- # 11 – Penske
10m x 3m
- # 10 – Liebherr
7m x 3m
- # 9 – Waste Initiatives
6m x 3m
- # 8 – Garwood
6m x 3m
- # 7 – Superior Pak
9m x 3m
- # 6 – Superior Pak
9m x 3m
- # 5 – Superior Pak
8m x 3m

Entry to pre-function foyer, Conference
Registration Area and Exhibition



13 – Penske
10m x 3m

19 – Bucher
Municipal
6m x 2.5m

16 / 17 / 18 – HSR
Southern Cross
2.5m x 7m
2.4m x 5m
2 x 2.5m x 9m

27m x 6.5m

14 – Penske
10m x 3m

15 – Garwood
10m x 3m

21 – Specialised
Pavement Services
6.4m x 2.5m

20 – Solo
Resource Recovery
9.5m x 3m

4 – CONTENUR
5m x 2m

3
CONTENUR
5m x 2m

2 – Eco
Guardians
5m x 2m

1 –
JCB
Constructions
4m x 2.5m

Main Opal Cove Entry to Resort Reception and Exhibition

- Available
- Sold