



A new journey

Dementia friendly transport



**“Travel brings
normality to
an often
abnormal life”
-Wendy**

Loneliness
rivals
smoking as
health risk






**Transport
can be a
stress for
carers**



**Dementia can be
just as much of a
barrier to travel
as a visible
disability**



**It's not
just about
memory**

- **Memory**
- **Attention**
- **Processing speed**
- **Organisation**
- **Perception**
- **Mobility**
- **Communication**
- **Behaviour**



Alternatives to driving



Public transport



Spot the mystery object



**Taxis:
Total
Mobility
scheme**

Volunteer drivers



Driving services





Flying &
cruising



Ways
forward



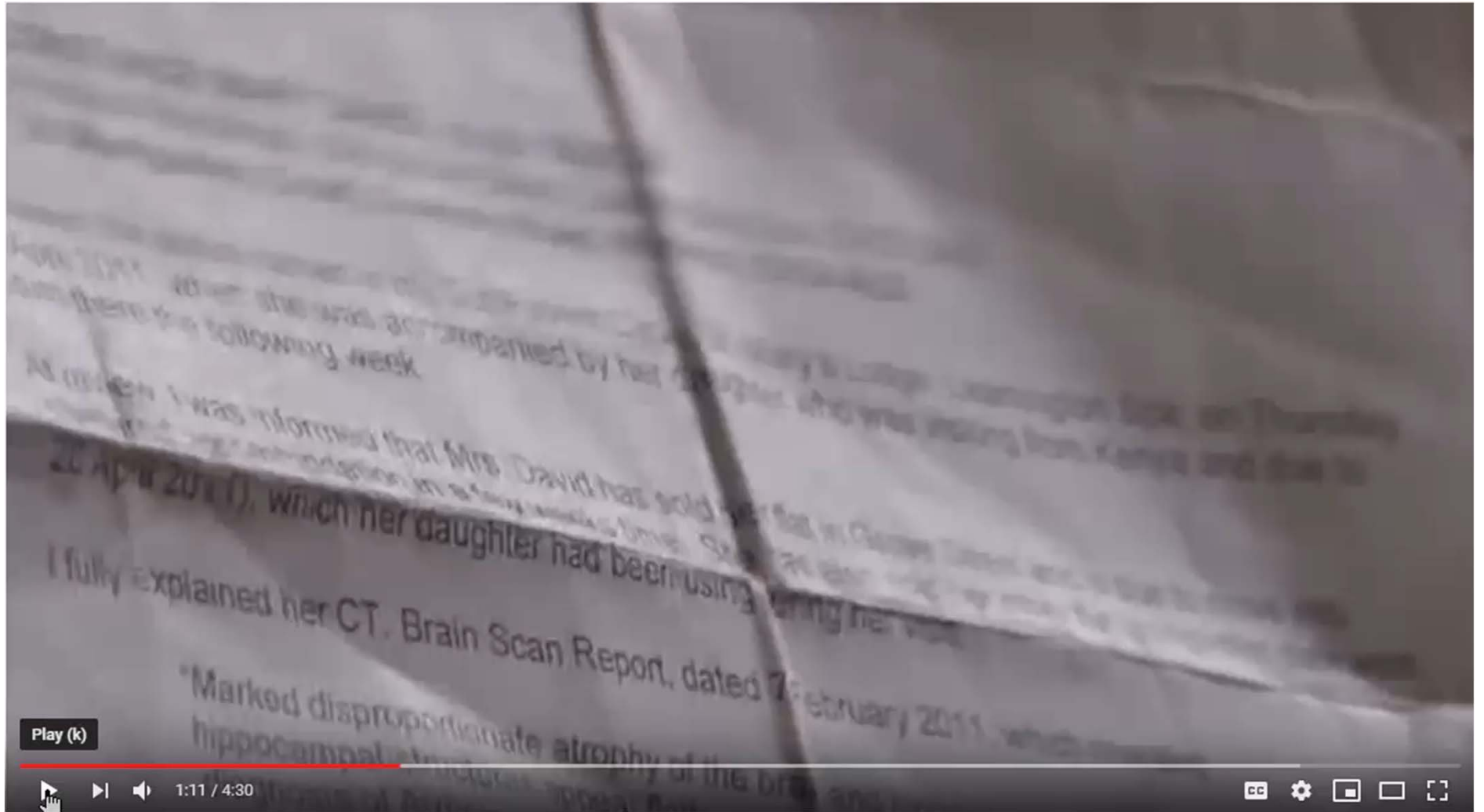
Dementia friendly way-finding

**Consult
with people
living with
dementia**



**Dementia
friendly
people**





Play (k)



1:11 / 4:30





www.DementiaCanterbury.org.nz