

People power:
The path to low carbon transport
18 - 19 March, 2024
Tākina Convention Centre
Te Whanganui-a-Tara Wellington

2WALKand**CYCLE**



Cycling in Christchurch: we are building it, are they coming?

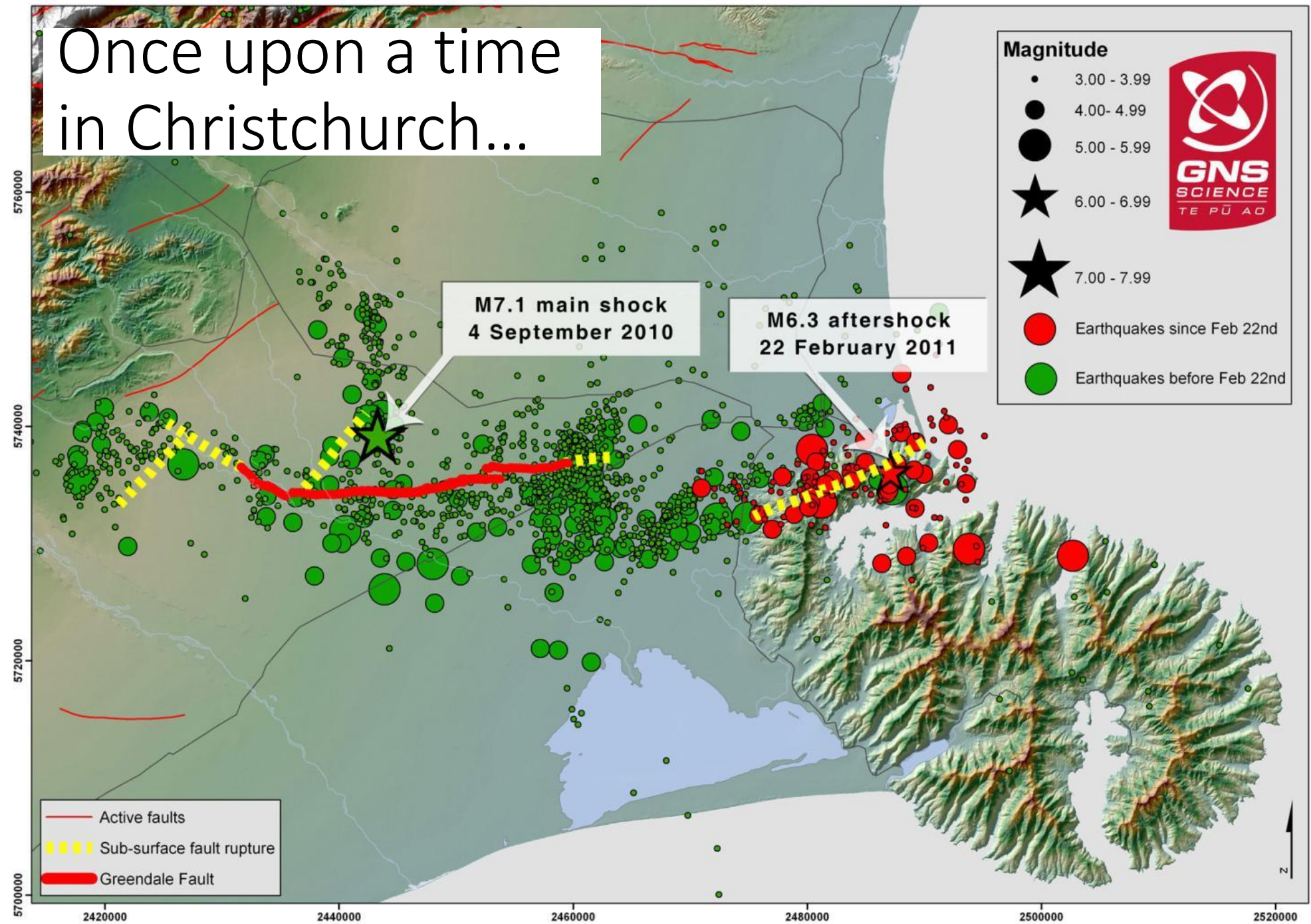
Simon Kingham^{1 2}, Jillian Frater¹, Lindsey Conrow¹,
Glen Koorey³ and Karen Banwell¹

¹ Te Whare Wānanga o Waitaha | University of Canterbury

² Te Manatū Waka | Ministry of Transport

³ ViaStrada

Once upon a time
in Christchurch...



We sought some ideas for what next...



shareanidea.org.nz

Make cycling much safer with dedicated bike paths separated from cars on most routes. Only experienced cyclist dare ride at present.

Graham *Rcam*

Everything about our city can be geared to making it seen as the best city in the world for cycling (other great things follow)

gareth *ilcam*

Bicycle highways - just for bikes - into the city. Make cycling in to work, or out to the beach on the weekend, safe and fun.

paul *summer*

Separate the cycle ways from the cars so cyclists are safer, which would encourage cycling as a greener way of getting about.

Elizabeth

Seperate cycleways (like copenhagen) linking suburbs and city and making cycling pleasant!

Hilary *Cashmere*

Build widened cycling tracks to encourage more people to bike instead of drive. This will also persuade people to not cycle on the footpath.

Ruijia *Merivale*

More walking or cycling-only areas in a compact area with good parking around it. Separate cycle ways where possible.

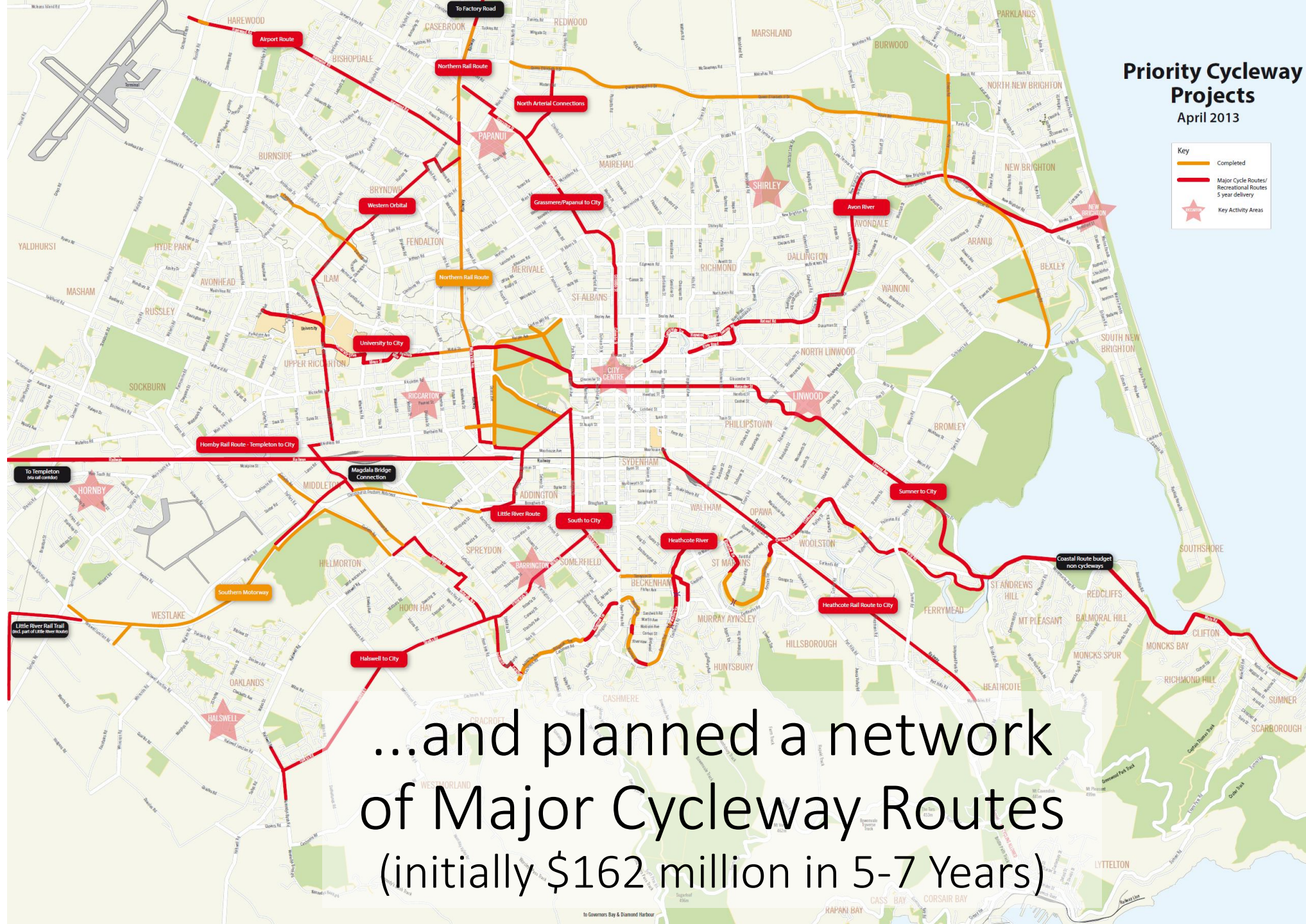
Simon

Priority Cycleway Projects

April 2013

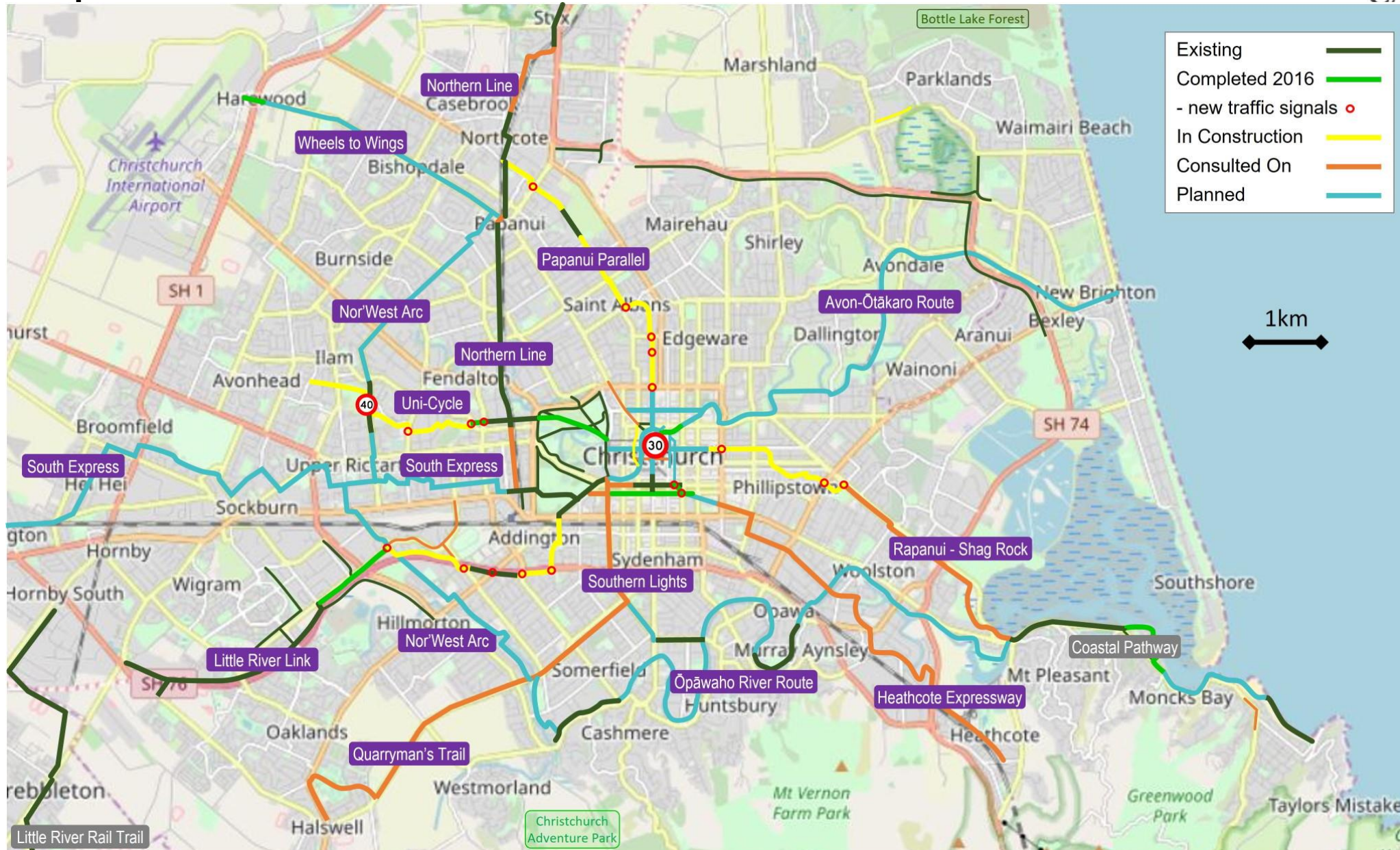
Key

- Completed
- Major Cycle Routes/
Recreational Routes
5 year delivery
- Key Activity Areas

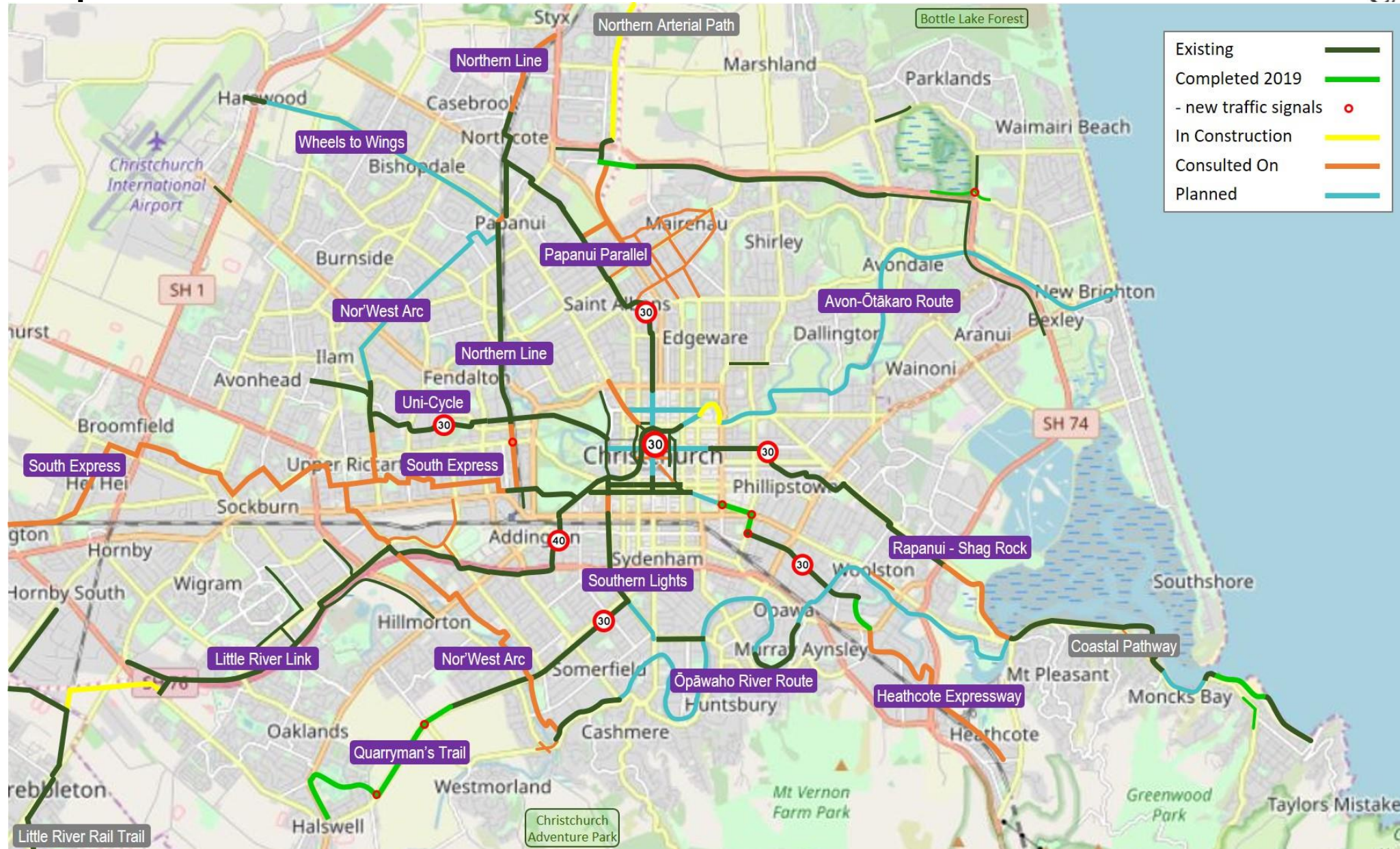


...and planned a network of Major Cycleway Routes (initially \$162 million in 5-7 Years)

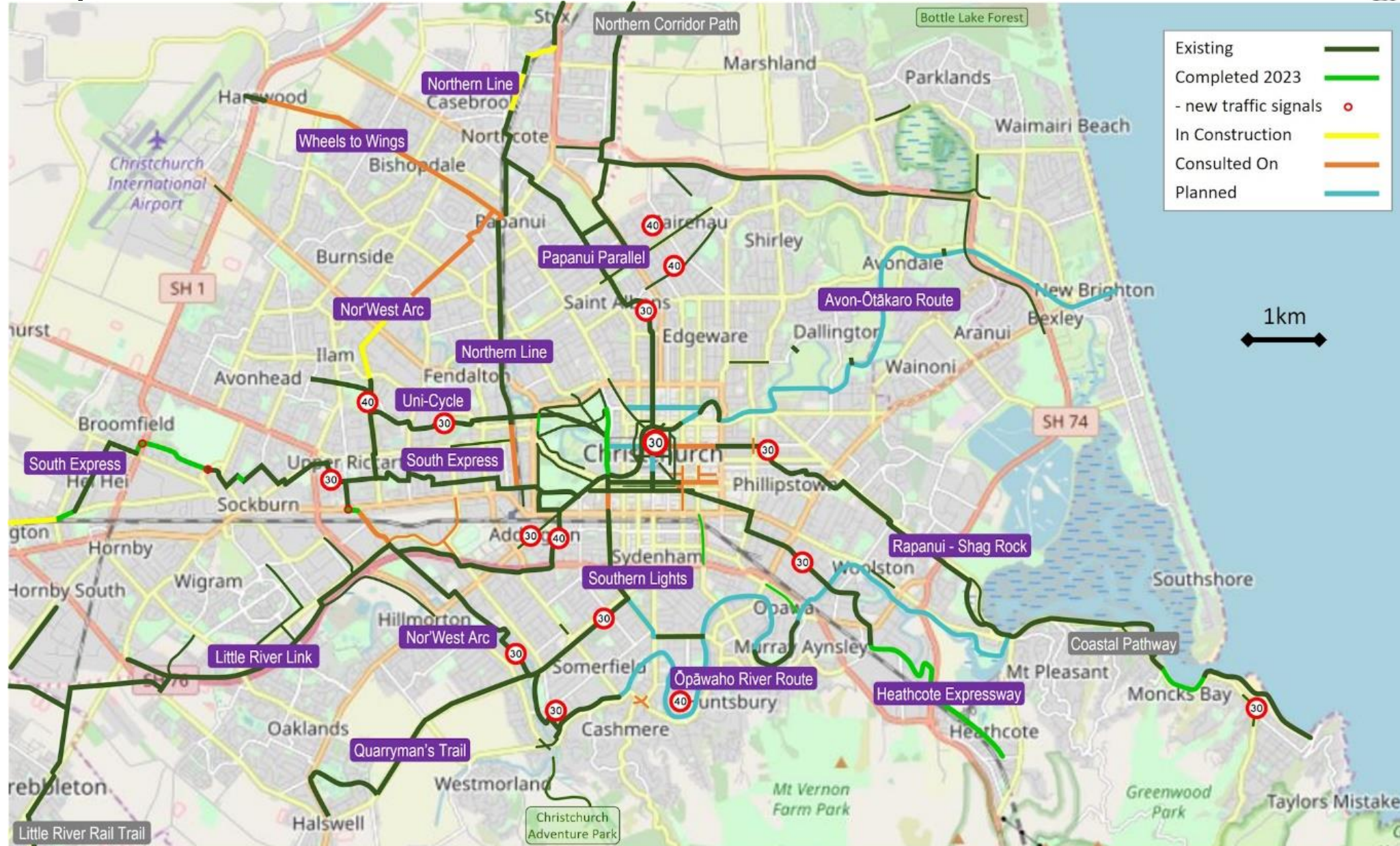
Map MCWs - 2016



Map MCWs - 2019



Map MCWs - 2023



Cost

Major Cycle Routes (MCRs) (13)

- Original estimate \$160m
- Likely total \$200-220m

Objectives

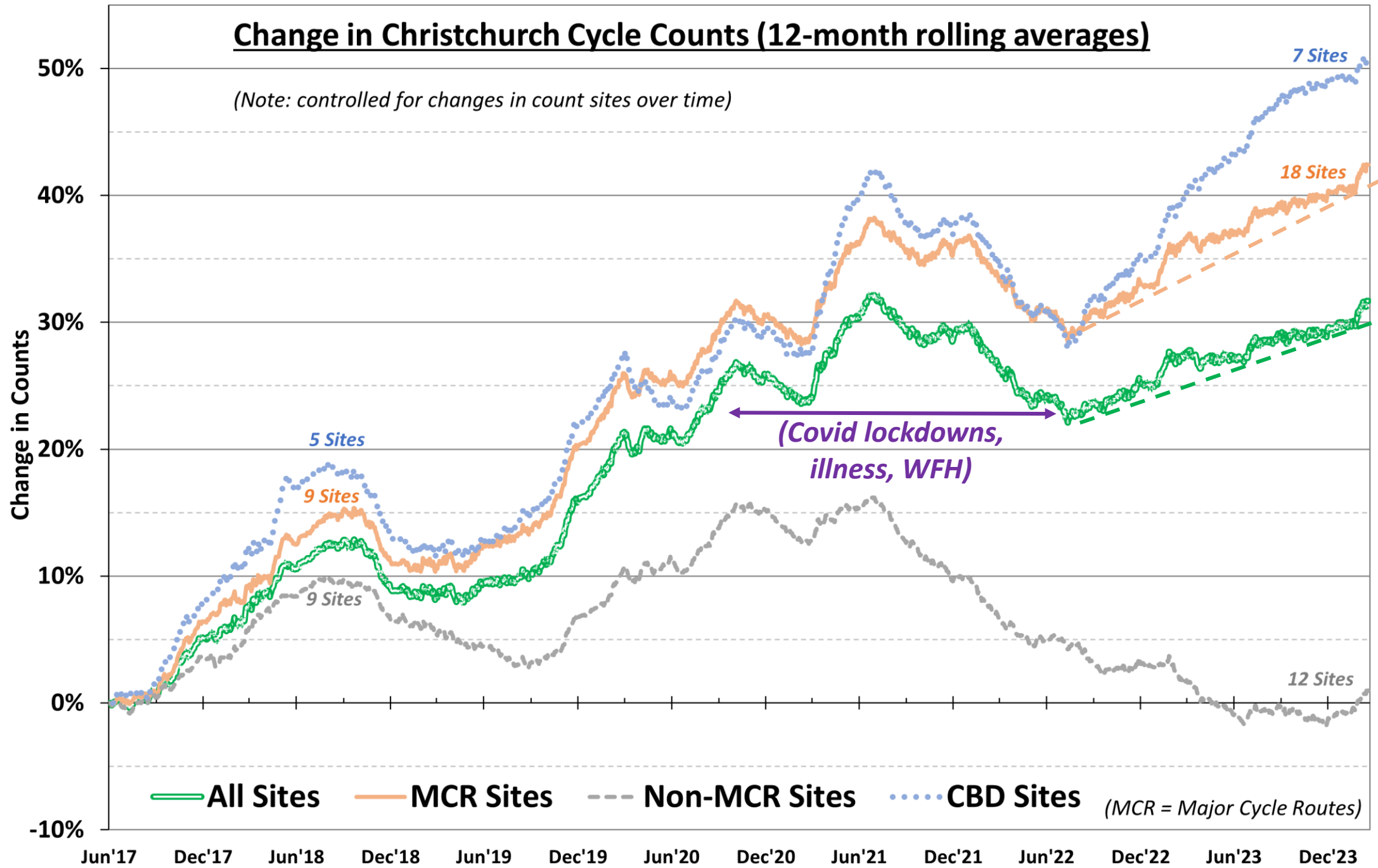
- How have cycling rates changed?
 - Who?
 - Where?
 - Why?

Methods

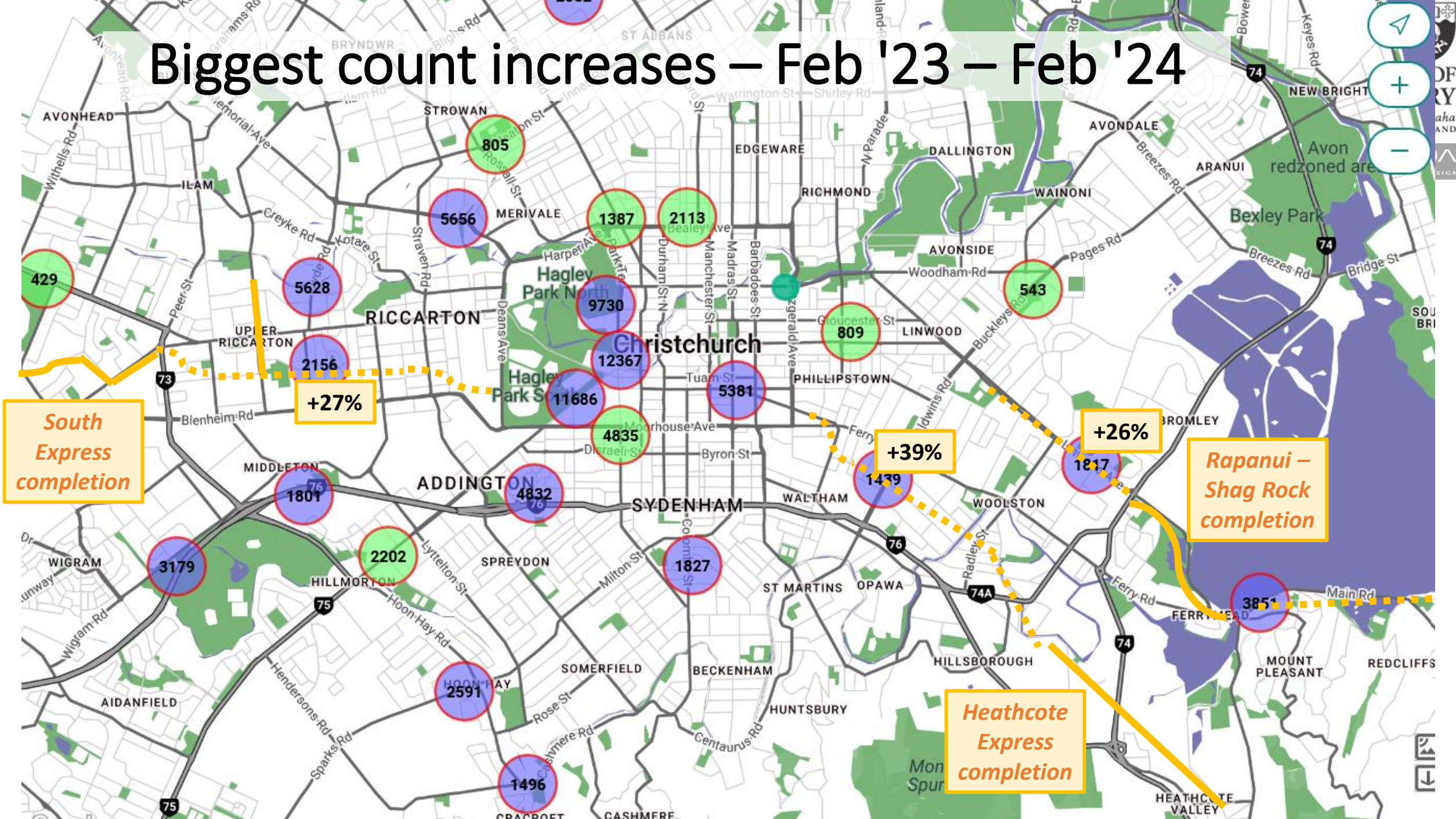
- Cycle count data
- Household travel survey
- Survey and interviews of 'new' cyclists

Change in Christchurch Cycle Counts (12-month rolling averages)

(Note: controlled for changes in count sites over time)



Biggest count increases – Feb '23 – Feb '24



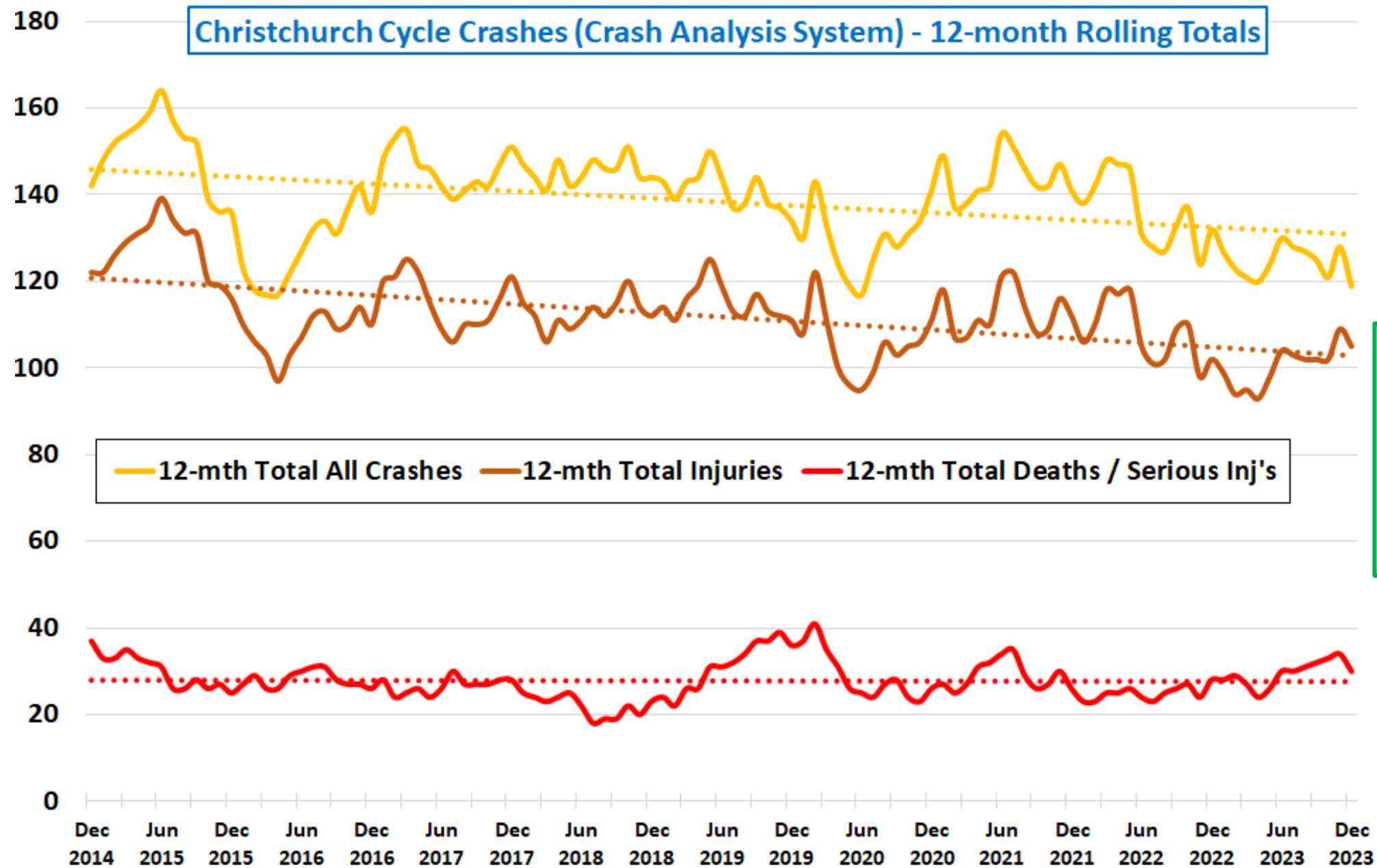
South Express completion

Rapanui – Shag Rock completion

Heathcote Express completion

Cycle safety

Christchurch Cycle Crashes (Crash Analysis System) - 12-month Rolling Totals

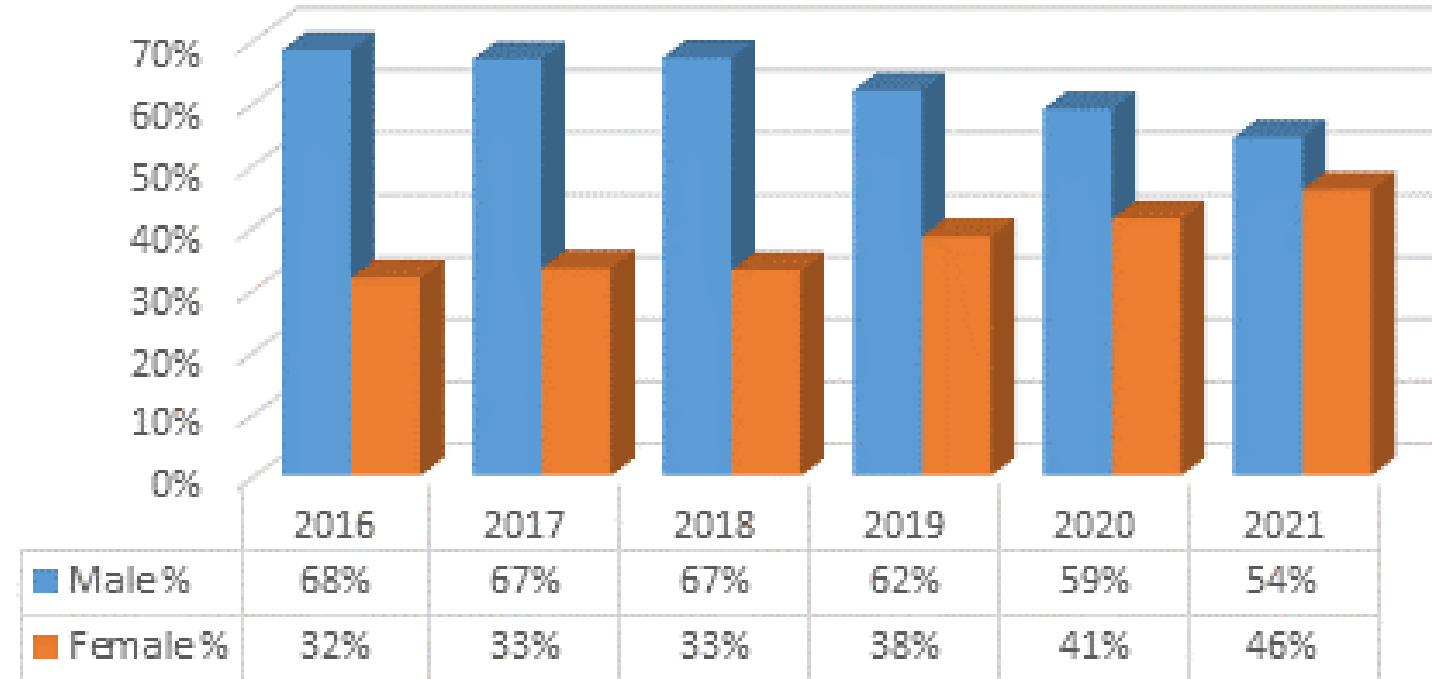


*Slight decline
+ growth in
numbers =
improved risk
per person*

Who is cycling

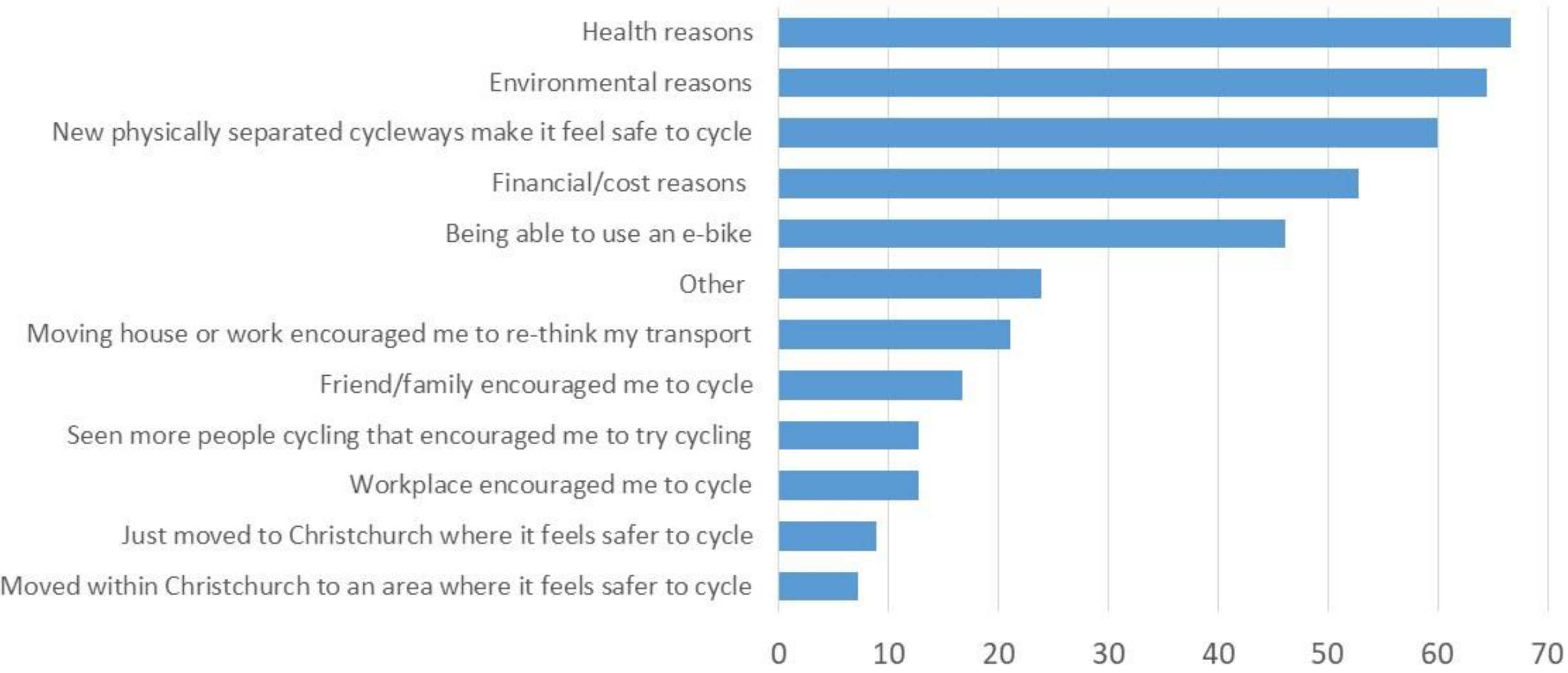
- More **women**
 - CCC Cordon Count surveys
 - No, this doesn't mean fewer men!
- More **older** people
 - 2015-18 vs 2019-22: **150%** growth (*MoT Household Travel Survey, Cycling by NZers 61+ years*)
 - Growth in e-bikes?

Gender of Cyclists in Central City



'New' cyclists survey: Reasons

Reasons for cycling %, n=181



'New' cyclists survey: Reasons

- Gender
 - Health more important for males
 - Financial more important for females
- Age
 - Separated cycleways more important for over 65 yrs
 - Separated cycleways more important for 35-49 yrs
 - Friend/family encouragement more important for 25-34 yrs
 - E-bike more important for over 65 yrs

'New' cyclists interviews: Safety

*"It just feels so much safer. I sometimes take Papanui Road when it's quiet in the morning, at 5.30. And even **then**, I don't feel that safe. But yeah, just being on the cycleways makes **such** a difference to how safe I feel on the road"* (female 25-34yo)

*"I'll preferably **try and find the separated cycle route**, and depending on how far out of the way it is but **most of the time I'd prefer to go the slightly longer route, that takes an extra 2-5 minutes because it's safer**". (male 25-34yo)*

'New' cyclists interviews: Safety and confidence

When asked about what encouraged her to start cycling:

*"Christchurch with **all these separated cycleways; it's amazing**. It makes people like me who **are newbies feel so comfortable**. I think if I had the painted lines initially, it still would have been quite scary with all the cars right next to me. So, the fact I had those to start on, was fantastic". (female 50-64yo – moved from Auckland)*

*"Initially I thought, wow, they've gone way over the top with some of these cycle lanes, and like on Rutland Street you've got them on both sides of the road, **but I think they're great**, and if it gets more people out, and using them and gets more people mindful of cyclists:**I think the cycleways are great, I love them**, and it would be good to have a few more in Christchurch."(male, 50-64 yo)*

'New' cyclists interviews: enjoyment

*"I'll always go round the river, along the promenade. **I really enjoy the shared pathways** (laughs). I don't mind slowing down for pedestrians and things, makes it **more interesting**, in my opinion....I'm certainly a sedate cyclist, so I take my time."* (female 35-49 yo)

*"**I really like the dedicated cycleways** just for biking or the shared paths for cycling and walking, **I will go out of my way to use a cycleway that's off the road**. I really enjoy them because you can do your thing, and not worry about pedestrians, but so long as it's completely separated from the road, I'm quite happy."* (female 25-34 yo)

'New' cyclists interviews: Impact on car users

- *"I think that the **people driving around them [the separated cycleways]** because they're going through neighbourhoods and stuff like that, they're just people commuting so they know that the cycleway is there, they're looking for cyclists more generally. ... I just find people much **more courteous** and sometimes when you're on **another road, you're like holy heck.**" (female 25-34yo)*

'New' cyclists interviews: e-bikes

*"I come from the position of someone who has a chronic illness and who lives in the suburbs... **for someone who is not used to a [standard] bike then I need the e bike to get places.** When I first got it, I was a bit unsure if I would need the e bike, but I am so glad I did it, **I love it,** but until you have done it, you don't know how much you will use it, and they aren't cheap."* (female 35-49 yo)

Other than buying an e bike was there any other reason why you started cycling again?

*"No not really it was just we had thoughts that **walking through the park was just getting too long...** and **the e bike is the perfect thing to exercise with.**"* (male 65-79yo)

Key Findings/Summary

- More people are cycling
- Proportionally more women are cycling
- Proportionally more older people are cycling
- Greatest increase in cycling near Major Cycle Routes
- E-bikes are encouraging people to cycle
- Major Cycle Routes are encouraging people to cycle
 - a network effect
 - and possibly making drivers more aware of cyclists

Take home message

- Cycling in Christchurch: Are we building it, are they coming?
- **YES**

