

Elevating Urban Mobility: Cable Cars as Urban Transport

 **abley**




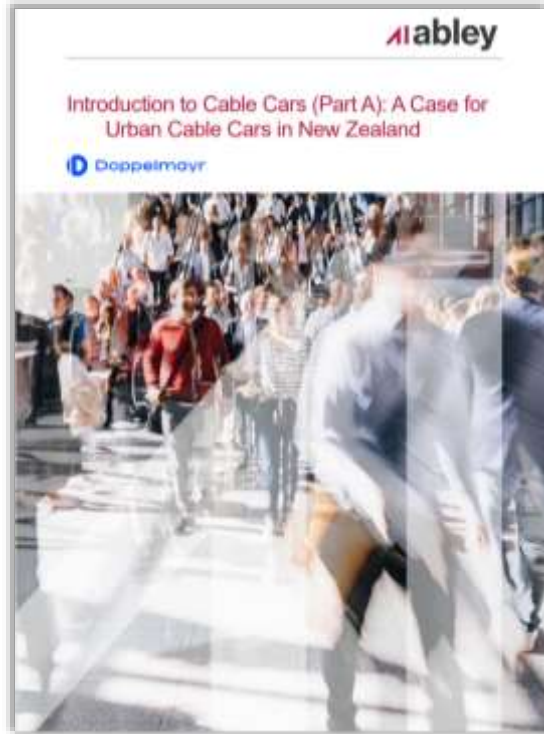
New Zealand's Transport Landscape

- New Zealand population - An increase of around 20% over ten years (Stats NZ)
- Reliance on private vehicles - The New Zealand Household Travel Survey 2018 found that around 78% of all trips are made by private vehicles
- Strain on the transport system - New Zealand's diverse topography necessitates a tailored approach

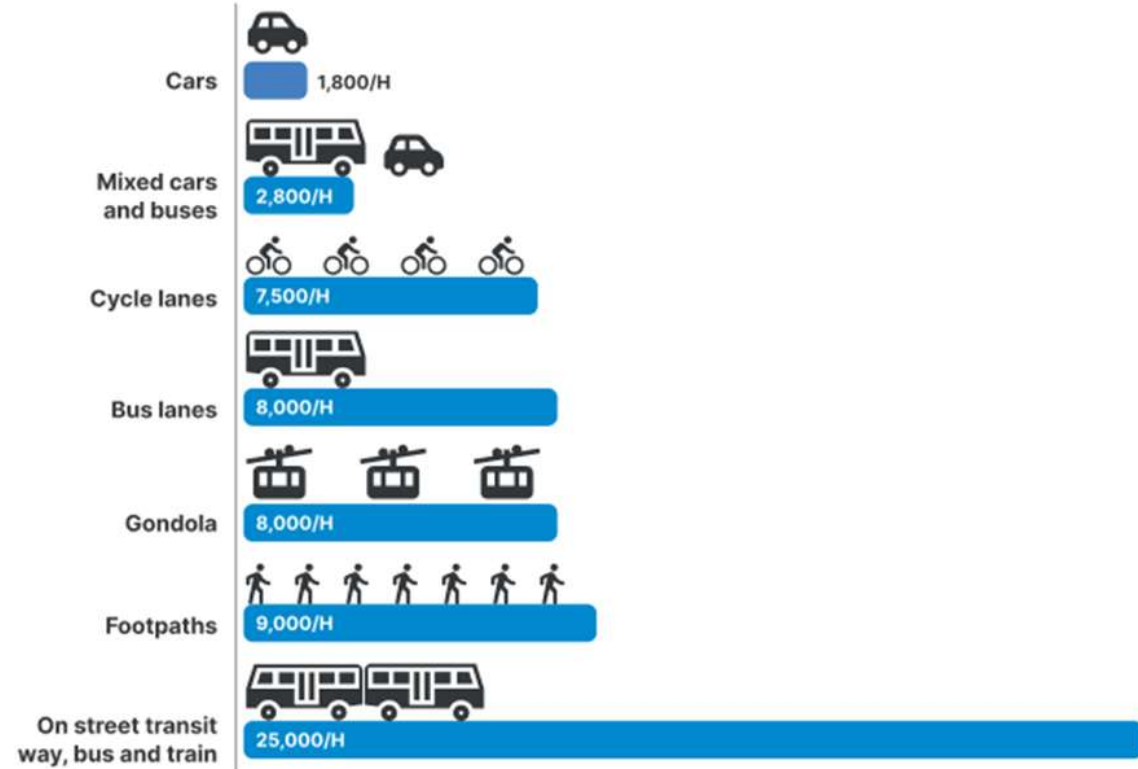
Cable Cars as Public Transport



Public Transport Characteristic	Cable Car
Service Frequency	High-frequency cable cars can arrive every 15 seconds and be adjusted for off peak times
Reliable Journey Times	Avoids ground congestion, shorter travel distances and has a consistent travel speeds of 25km/h
Integration	



Lane Capacity by Street User (people/hour)



FAQ's

- **Wind:** Cable cars can operate in winds up to 100km/h
- **Privacy:** Smart Design maintains privacy
- **Noise:** Cable cars are one of the quietest modes of transport



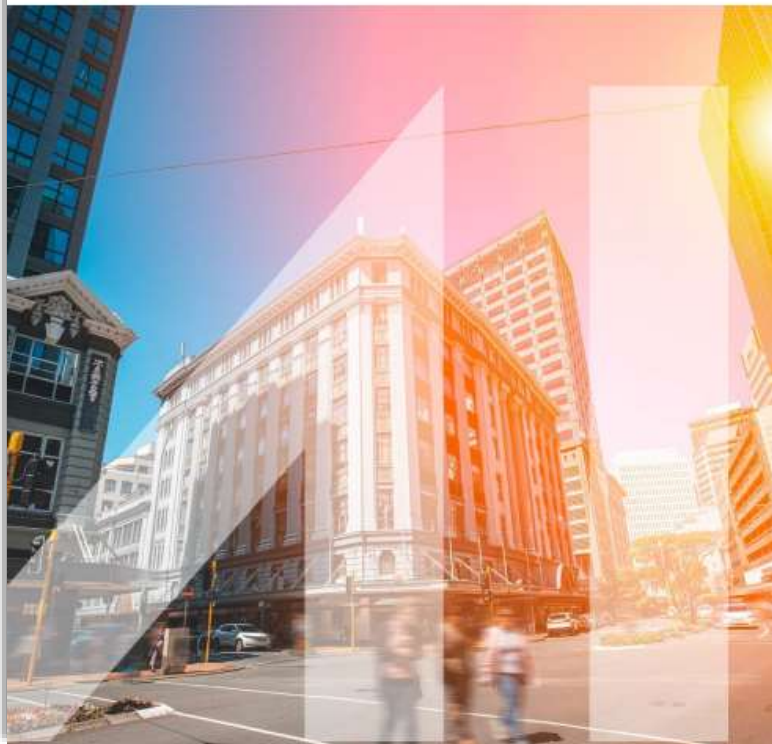
Introduction to Cable Cars (Part B):
Policy, Consenting & Installation
Considerations



Draft GPS 2024 - Strategic Priority	
Economic Growth and Productivity	Cable car systems offer optimised travel connections without contributing to increased road traffic volumes.
Increased Maintenance and Resilience	Adopting cable cars can mitigate strain on road corridors, reducing regular maintenance costs.
Safety	Cable cars have a good track record for safety
Value for Money	Cable cars offer significantly lower whole-of-life costs of major improvements to public transport, with far lower economic disruption during construction.

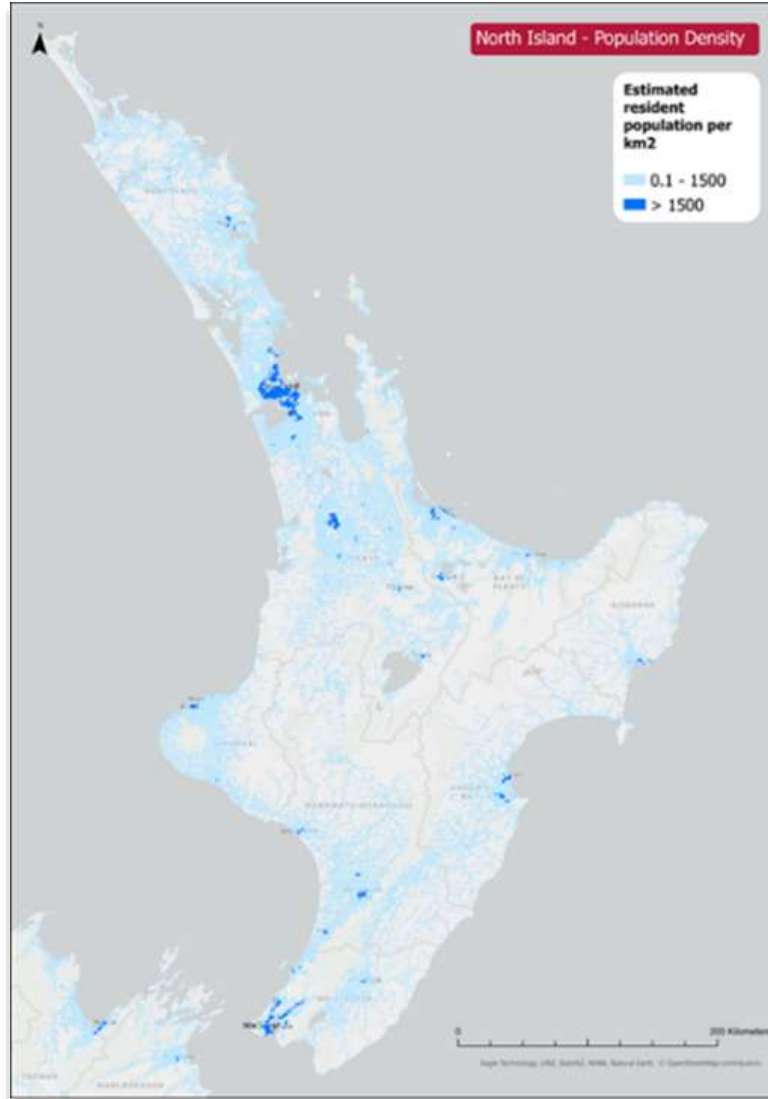


Introduction to Cable Cars (Part B):
Policy, Consenting & Installation
Considerations





Introduction to Cable Cars (Part C): Urban Cable Car Opportunities in New Zealand





Introduction to Cable Cars (Part C): Urban Cable Car Opportunities in New Zealand



Cable Car Route	Length – Construction (km)	Cost/km Estimate (\$ million)	Travel Time Car (min)	Travel Time Bus (min)	Travel Time Cable Car (min)	BCR
Auckland Airport - Onehunga	9.0	52	33	44	26	2.4
Onehunga – CBD	8.4	50	28	54	23	2.6
Airport – Botany	15.1	48	53	77	53	2.3
Wellington Airport – CBD	7.0	60	36	36	22	1.7
Wellington: Island Bay - Pipetea	7.2	40	22	42	20	2.0
Karori – CBD	3.2	60	20	33	8	1.8
Wainuiomata - Melling	6.8	40	17	47	18	1.2



Olivia Heer

021 071 5321

olivia.heer@abley.com

abley



Auckland

Level 1/70 Shortland Street
Auckland 1010
Aotearoa New Zealand

Wellington

Level 1/119-123 Featherston Street
Wellington 6011
Aotearoa New Zealand

Christchurch

Level 1/137 Victoria Street
PO Box 36446, Merivale
Christchurch 8146
Aotearoa New Zealand

hello@abley.com

+64 3 377 4703

abley.com