

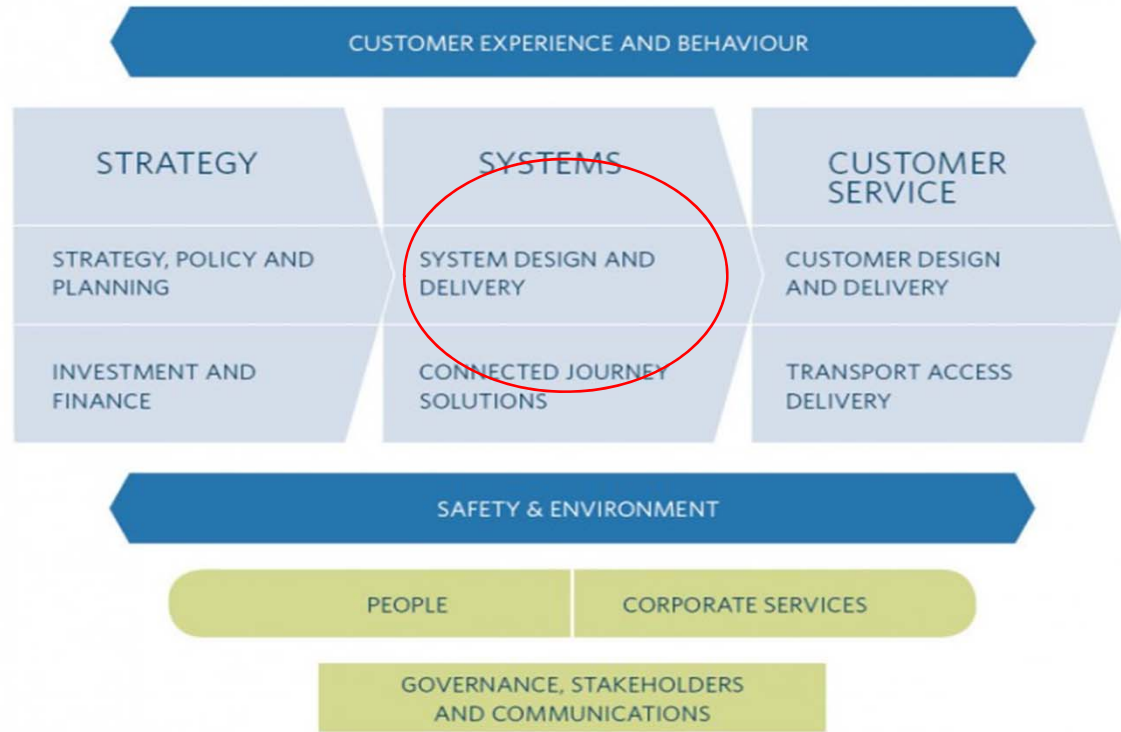


NZTA Walking and Cycling – the journey ahead

Sarah Downs – Portfolio Manager, System Design – Developing Regions

CUSTOMERS AND CITIZENS

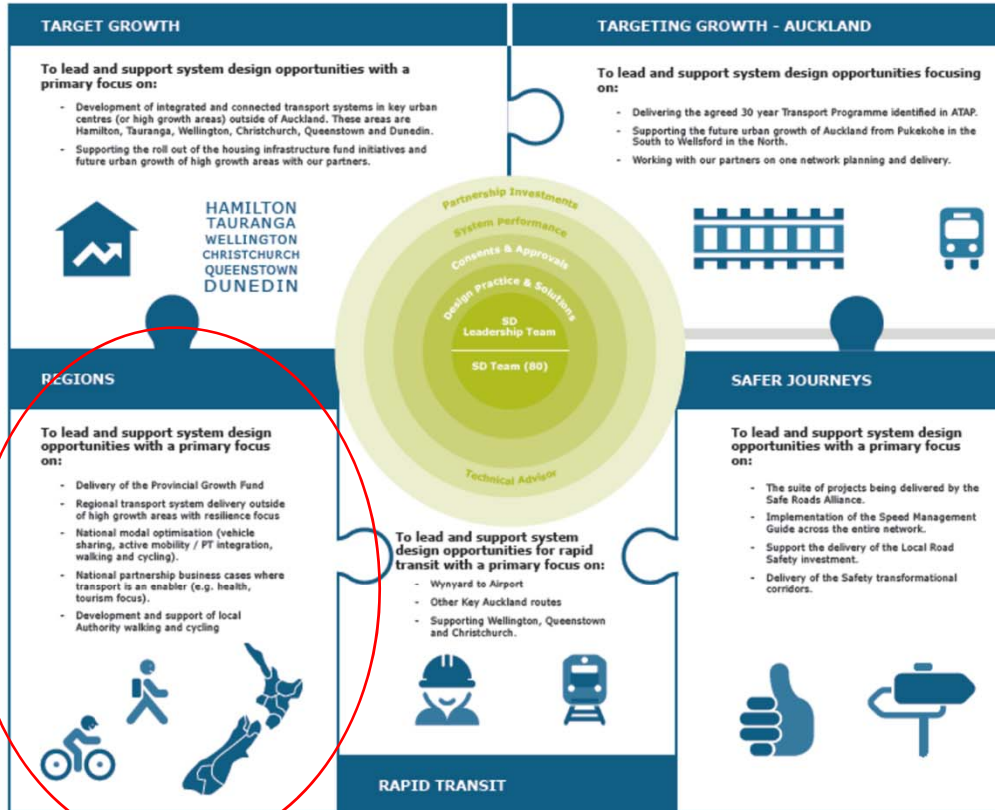
GOVERNANCE



PARTNERS AND STAKEHOLDERS

System Design

We are accountable for leading the design of the integrated transport system with our partners



DESIGN PRACTICE & SOLUTIONS

Provide leadership and expertise in business case development to ensure desired outcomes, and drive customer centric system design solutions.

- Strategic, Programme, Indicative and Detailed Business Cases.
- Problem statements and investment objectives.
- Option development and selection.
- Benefits realisation.
- Deliverability and risk.

CONSENTS & APPROVALS

Identify and address environmental risks, provide input into regulatory planning processes, and manage land use applications.

- Provide leadership on the environmental planning aspects of state highway projects and maintenance activities to ensure all relevant environmental risks are identified and addressed.
- Provide effective input into regulatory planning processes to enable the safe operation, maintenance and development of the state highway and associated infrastructure.
- Manage and coordinate responses to third party land use development applications.
- Develop and maintain best practice process/guidance to support the efficient and effective delivery of the above work streams.

SYSTEM PERFORMANCE

Support the system Design & Delivery functions through optimisation, efficiency and safety.

- To support System Design and System Delivery focusing on:
- Minor Safety and Minor Efficiency program
 - Route Optimisation Project
 - Manage system performance outcomes through the Con Ops process
 - Safety management implementation
 - Safety Audit process at all stages of the capital project life cycle.

PARTNERSHIP INVESTMENTS

Develop and deliver system solutions through investment in Local Government activities and programmes.


- To develop and deliver system solutions through investment in local government activities and programmes, focusing on:
- Technical advice, investment support and assurance for key council activities.
 - Ensure robust assessment of key council activities as part of the delivery of the current NLTIP.
 - Providing business case advice and support to councils to enable them to identify integrated solutions that align with investment signals.
 - Provide guidance and support to externals to enable them to navigate the RLTIP business case process effectively so the best solutions enter the NLTIP.
 - Provide guidance and support to RLTIP/NLTIP through the TAGs, RAGs and RTCA.

Developing Regions Portfolio

REGIONS

To lead and support system design opportunities with a primary focus on:

- Delivery of the Provincial Growth Fund
- Regional transport system delivery outside of high growth areas with resilience focus
- National modal optimisation (vehicle sharing, active mobility / PT integration, walking and cycling).
- National partnership business cases where transport is an enabler (e.g. health, tourism focus).
- Development and support of local Authority walking and cycling



The illustration shows three blue icons: a person walking, a person riding a bicycle, and a map of New Zealand. The walking and cycling icons are positioned to the left of the map, which is a stylized outline of the country's islands.

Our accountabilities include:

- Resilience
- Access
- Provincial Growth Fund/ Regional Economic Development
- Transport is an enabler to growth, health and tourism
- Walking and cycling activity class
- Development and support of local government's walking and cycling programme





Our walking and cycling accountabilities

**Budget
and
Activity
class**

UCP

**Bike
Ready
and
Bikes in
Schools**

UCP



NLTP 18-21









How we will work with councils



Building up
capability
both
internally and
across the
sector

- Model communities,
- Active neighbourhoods
- Safer Streets



A photograph of a person with long dark hair, wearing a dark vest over a light-colored shirt, sitting in a wheelchair on a sandy beach. Their arms are outstretched horizontally towards the right. The background shows the ocean with waves and a clear blue sky. The image is partially obscured by a white text box on the left and a dark blue footer at the bottom.

Lessons Learnt and Moving Forward

Questions

Sarah.downs@nzta.govt.nz

