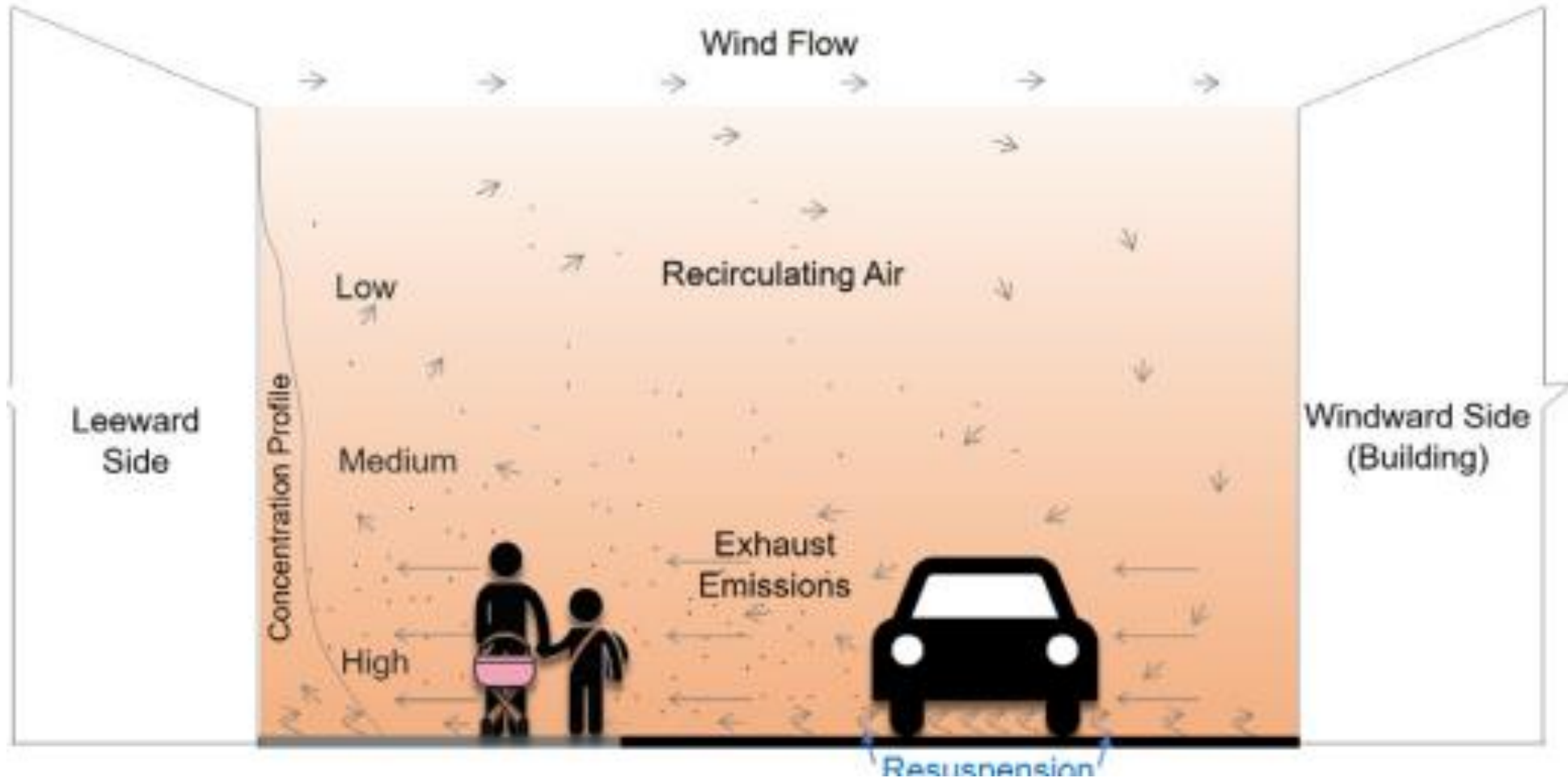


Prioritising clean air and active travel for schools



Introduction



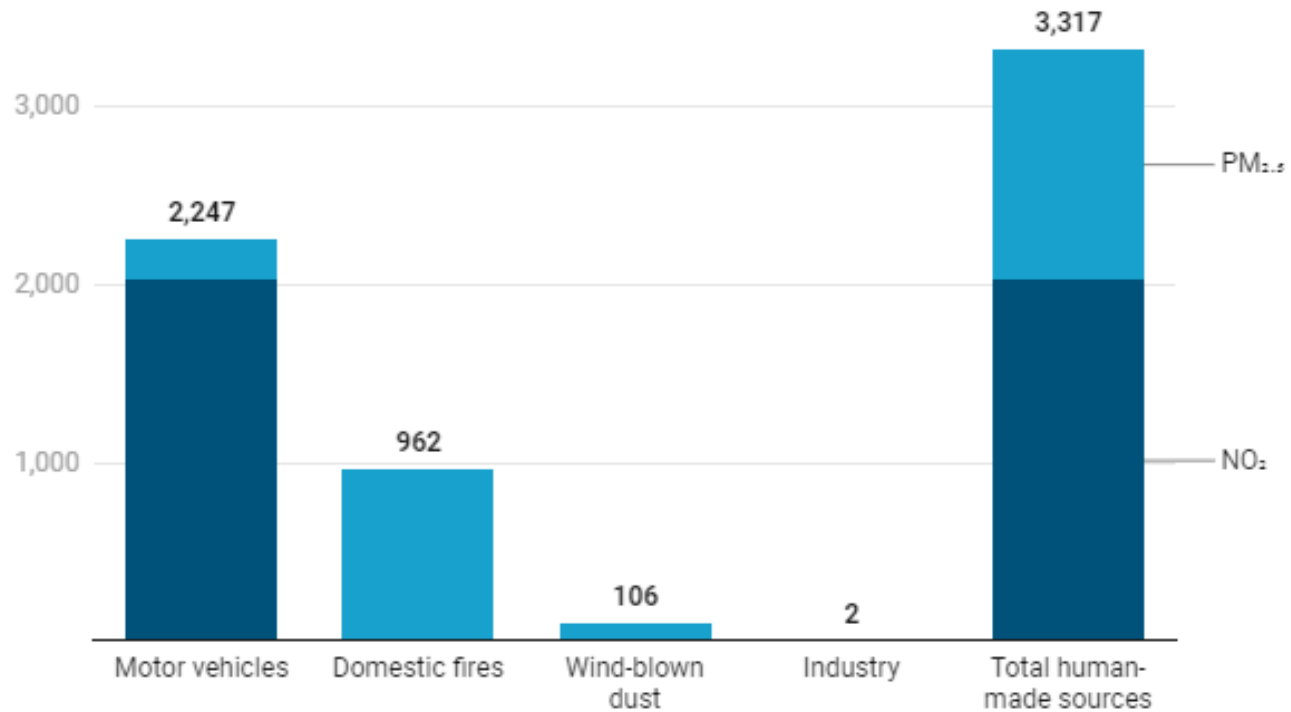


<https://www.surrey.ac.uk/sites/default/files/2021-01/mitigating-childrens-exposure-to-traffic-pollution-english-version.pdf>



First let's talk about
the numbers....

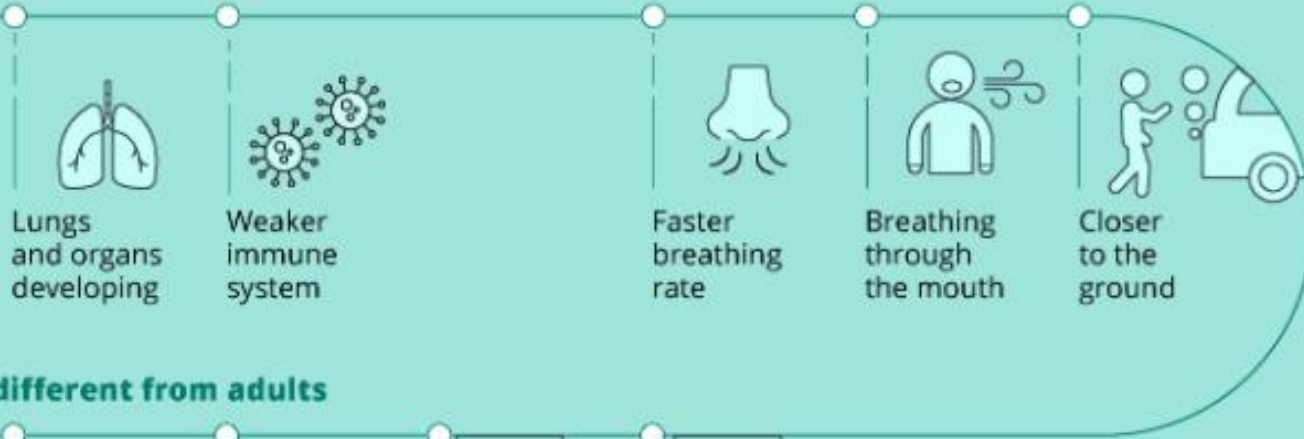
Air quality and health outcomes



Source: HAPINZ 3.0 • [Get the data](#) • Created with [Datawrapper](#)

Figure 1: Number of premature deaths due to human-made air pollution (NO₂ and PM_{2.5}) in New Zealand in 2016, by air pollutant and source of air pollution (people aged 30+ years)

Children and adolescents are more vulnerable to air pollution

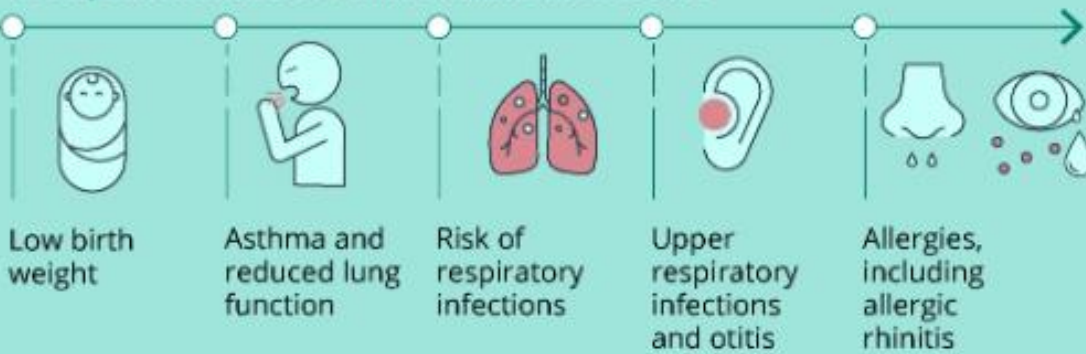


They take in more polluted air*

Exposure is different from adults



How pollution affects children and adolescents



1,200 deaths and the loss of over 110,000 DALYs** among those aged under 18 in EEA member states***

Air quality impact on our tamariki?

*Per kg of body weight

**DALYs: disability-adjusted life years, a measure of the burden of disease caused by a risk factor

***GBD Collaborative Network, 2020

How do we travel to education?

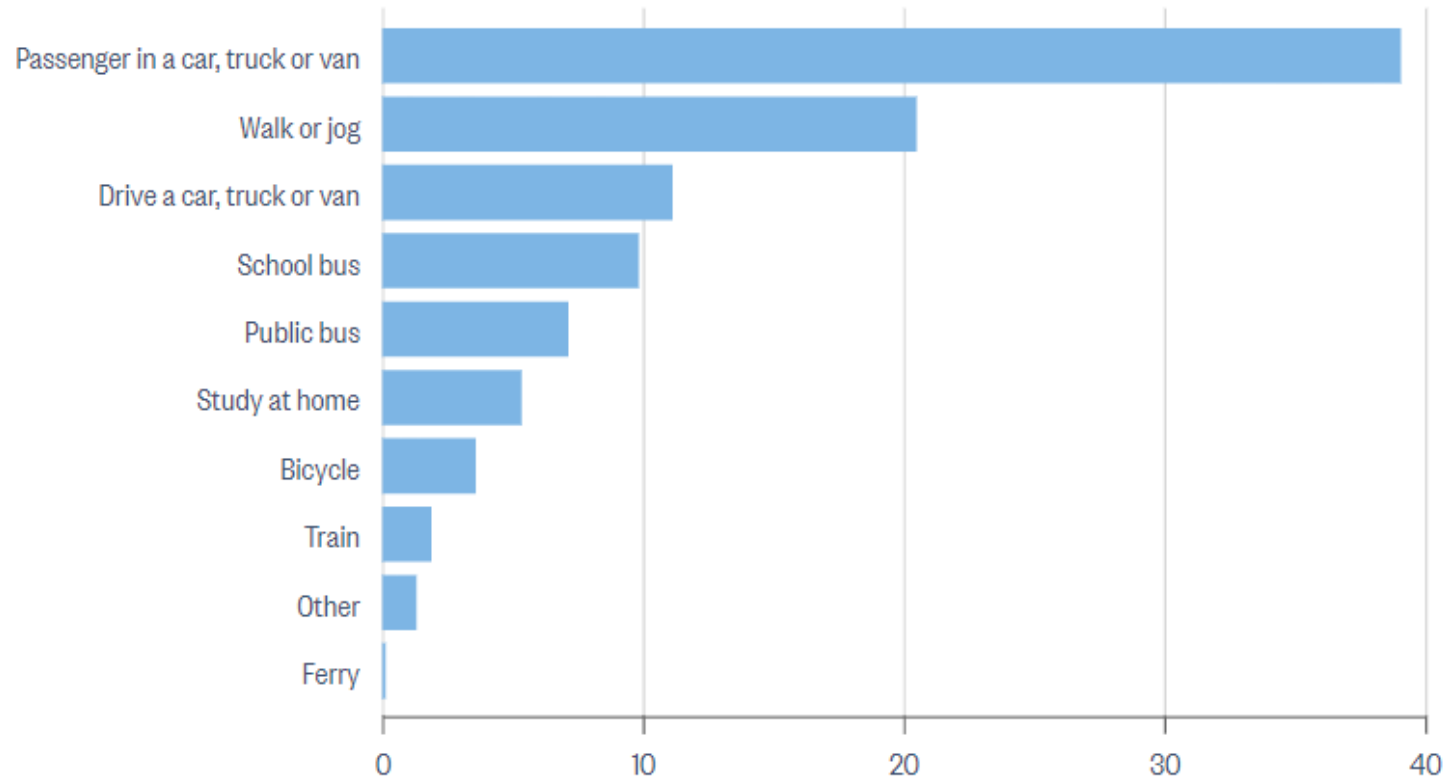
By Home-to-School Distance			
	Within 2.25 km	Between 2.25 km and 4.0 km	Beyond 4.0 km
	58%	14%	1%
	6%	6%	1%
	21%	58%	45%
	1%	8%	34%
Other modes:	14%	14%	19%

Main means of travel to education for people studying in New Zealand

figure.nz

2018 Census, % of students (of any age)

Provider: Stats NZ



What does this all add up to?

Air pollution more harmful to children in cars than outside, warns top scientist

Exclusive: Walking or cycling to school is better for children's health as cars are 'boxes collecting toxic gases' says David King

- **Opinion: Smoking in cars is banned. But children still inhale toxic fumes in backseats**



Air pollution worse inside London classrooms than outside, study finds

Exclusive: study of schools in capital finds dangerous levels of fine particulate pollution within classrooms, putting children at risk



📹 The mayor of London, Sadiq Khan, has announced a £1m fund to help tackle air pollution in schools. Photograph: Stefan Rousseau/PA Images

Children in London schools are being exposed to higher levels of damaging air pollution inside the classroom than outside, putting them at risk of lifelong health problems, a new study has revealed.

So, what can we
do?

Social license



Electric vehicles are not going to save us





Enable active travel

Focus on emissions at the school gate



Fine motorists idling outside schools to cut air pollution, say health watchdogs

New official guidance also backs planting trees, supporting cycling and encouraging take-up of electric vehicles to tackle crisis that causes 40,000 early deaths a year

Electric vehicles may
not be here to save
us but.....

Ngā mihi nui

Questions?

Contact

Clare Cassidy

Principal Engineer

www.abley.com

Clare.cassidy@abley.com

+64 27 254 4930



Presentation Name Date

Auckland

Level 1/70 Shortland Street
Auckland 1010
Aotearoa New Zealand

Wellington

Level 1/119-123 Featherston Street
Wellington 6011
Aotearoa New Zealand

Christchurch

Level 1/137 Victoria Street
PO Box 36446, Merivale
Christchurch 8146
Aotearoa New Zealand

hello@abley.com

+64 3 377 4703

abley.com