



2019 TRANSPORTATION GROUP CONFERENCE  
ENJOYING THE RIDE, SHIFTING THE MIND

# Team Velos

---

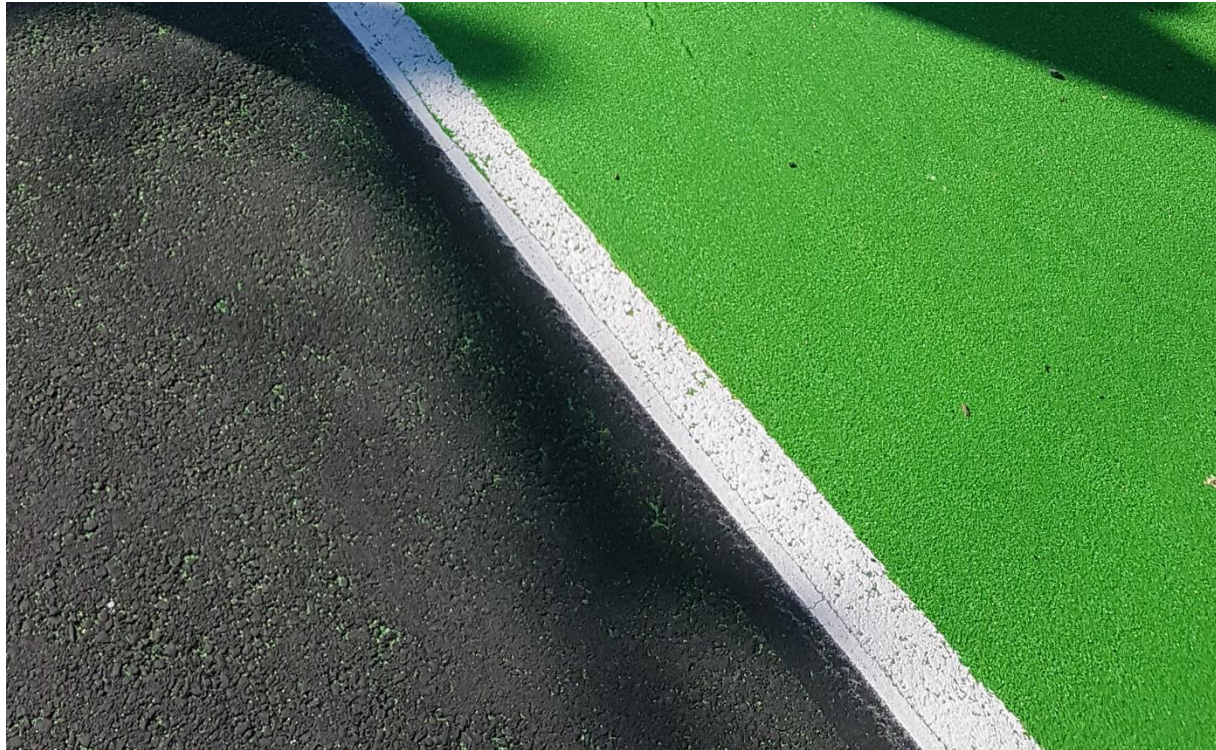
## WSP-Opus & Aurecon

- Richard Landon-Lane (WSP-Opus)
- Design Manager
- Stu Hamilton(Aurecon)
- Lead Designer



---

A cycleway is just green paint right?



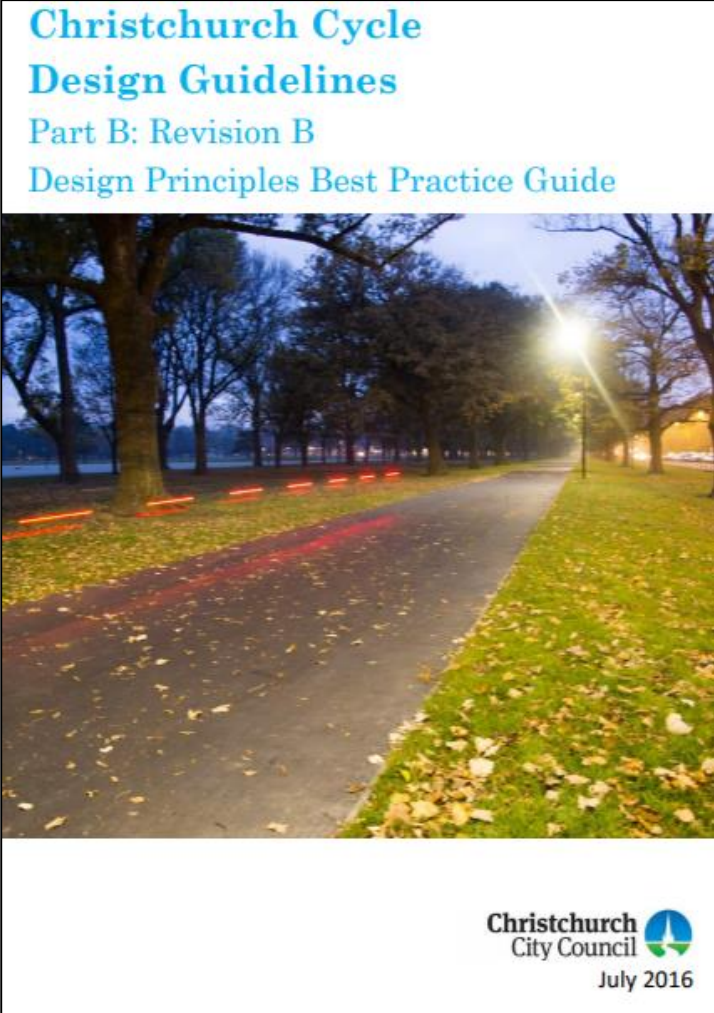
## Designing a cycling facility

- CNG home
- Site map
- Planning a cycling network
- Designing a cycling facility**
- Trials underway and rules programme
- Case studies



[CNG Home](#) | [Site map](#) | [Planning](#) | [Designing](#) | [Evaluating and monitoring](#) | [Trials](#) | [Case studies](#)

This part of the Cycling Network Guidance (CNG) provides users with best practice guidance, either directly or through links to appropriate sources for all stages of design, from concept stage through to detailed design. The figure below shows the broad design process including how it overlaps with the planning process; at the concept/scheme design stage the design of cycle infrastructure needs to be considered to allow completion of the route or network planning.



Road Design  
Street Lighting  
Traffic Signals  
Signage and Line-marking  
Stormwater  
Utilities (Water, Power, Comms, Fibre)  
Consenting  
Retaining Walls and Seawalls  
Structures and Bridges  
Ecology and Environment  
Land Contamination

Landscaping  
Heritage and Culture  
Public Transport  
Budget and Programme  
Urban Design  
Reserves and Parks  
Wayfinding  
Safety in Design  
Vulnerable Users  
Maintenance  
Public and Stakeholders

# Bikelash Anyone?

Haters gonna hate since ages ago

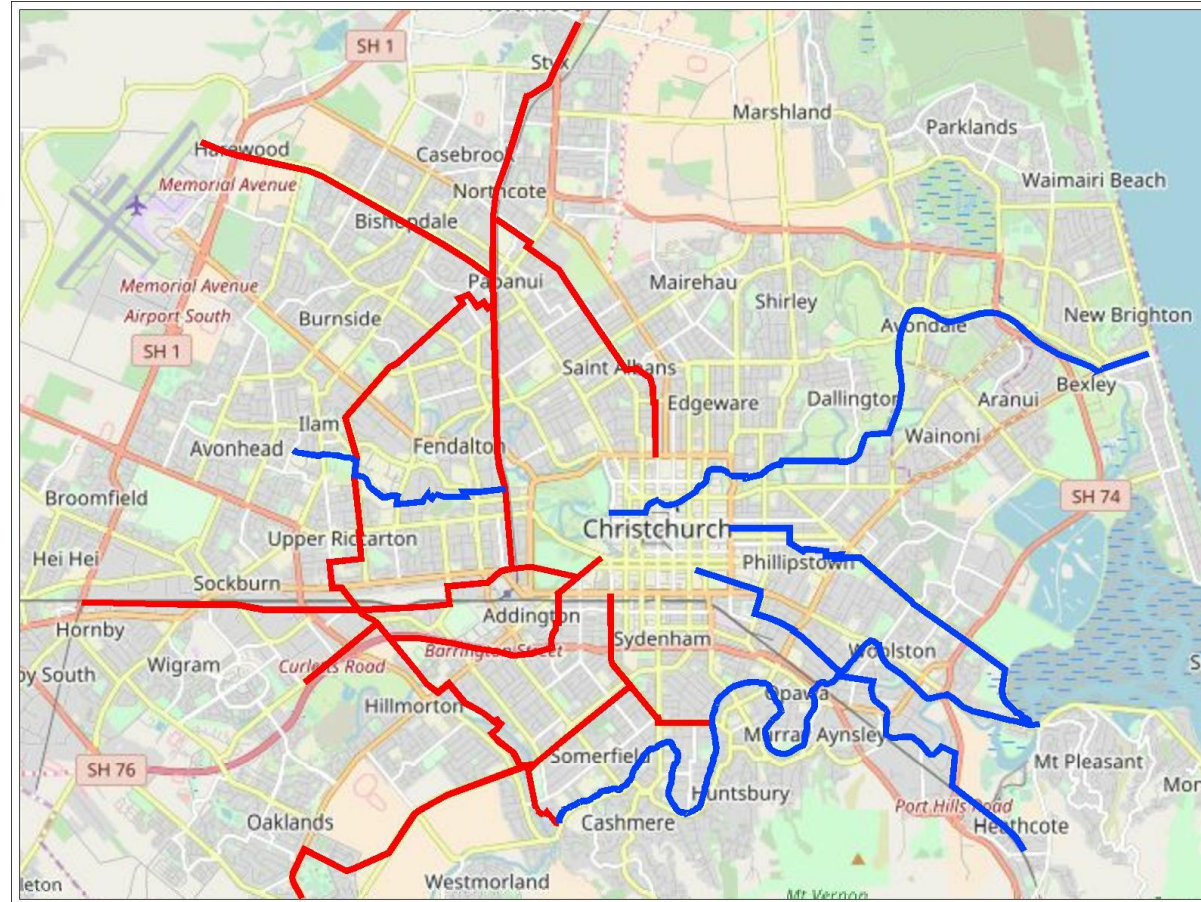




# Christchurch Major Cycle Routes (MCRs)

East vs West

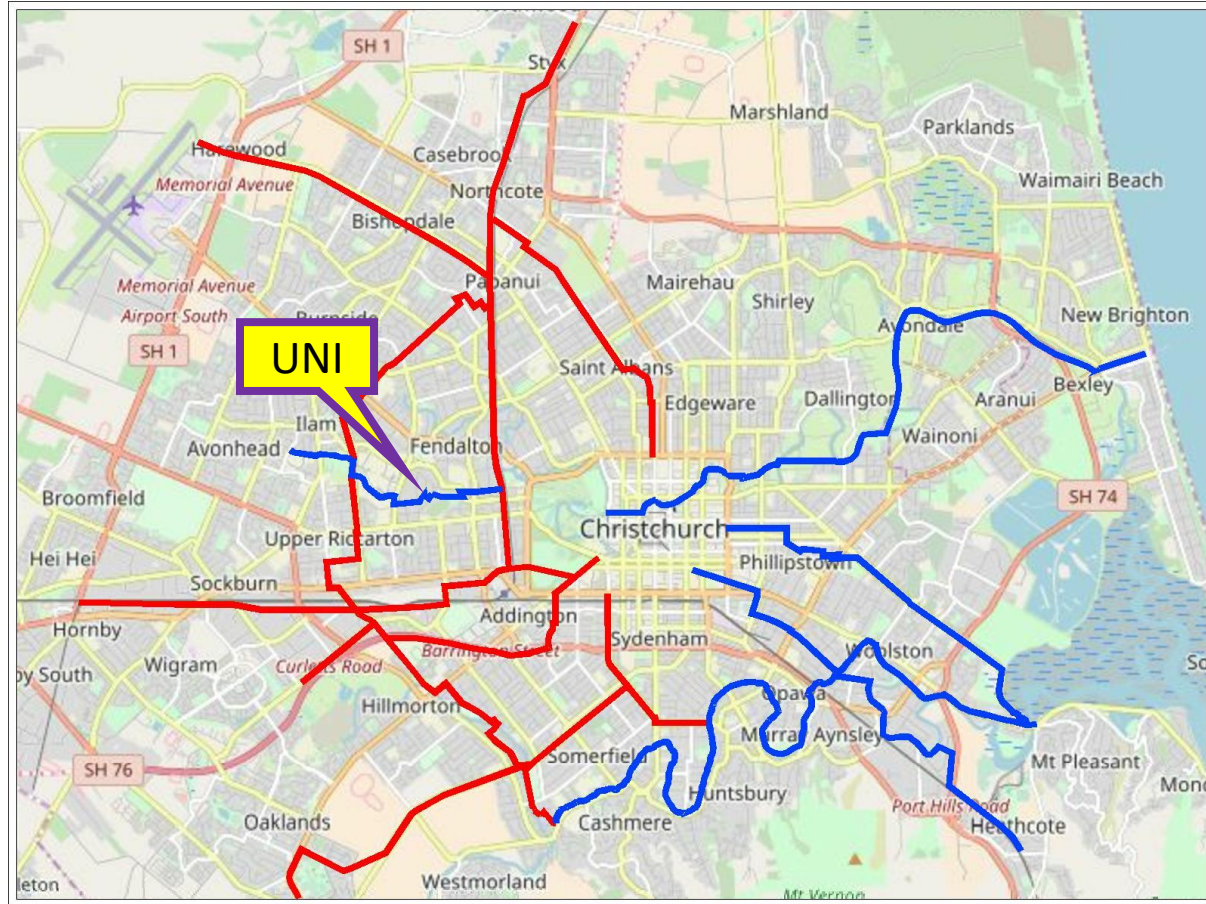
**BLUE** = Team Velos  
**RED** = Team Peloton





# Uni-Cycle Route

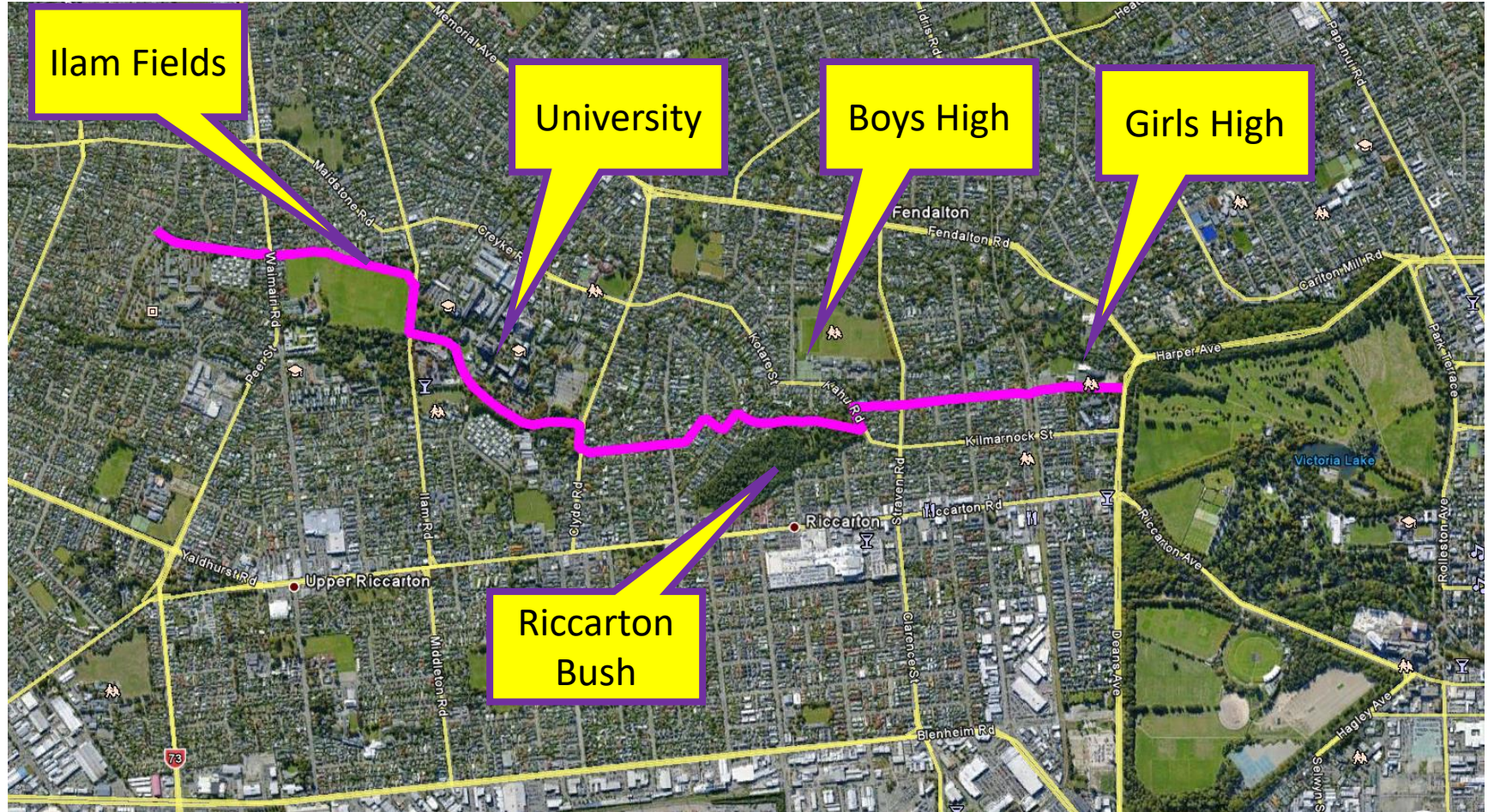
## Overview







# Uni-Cycle Route





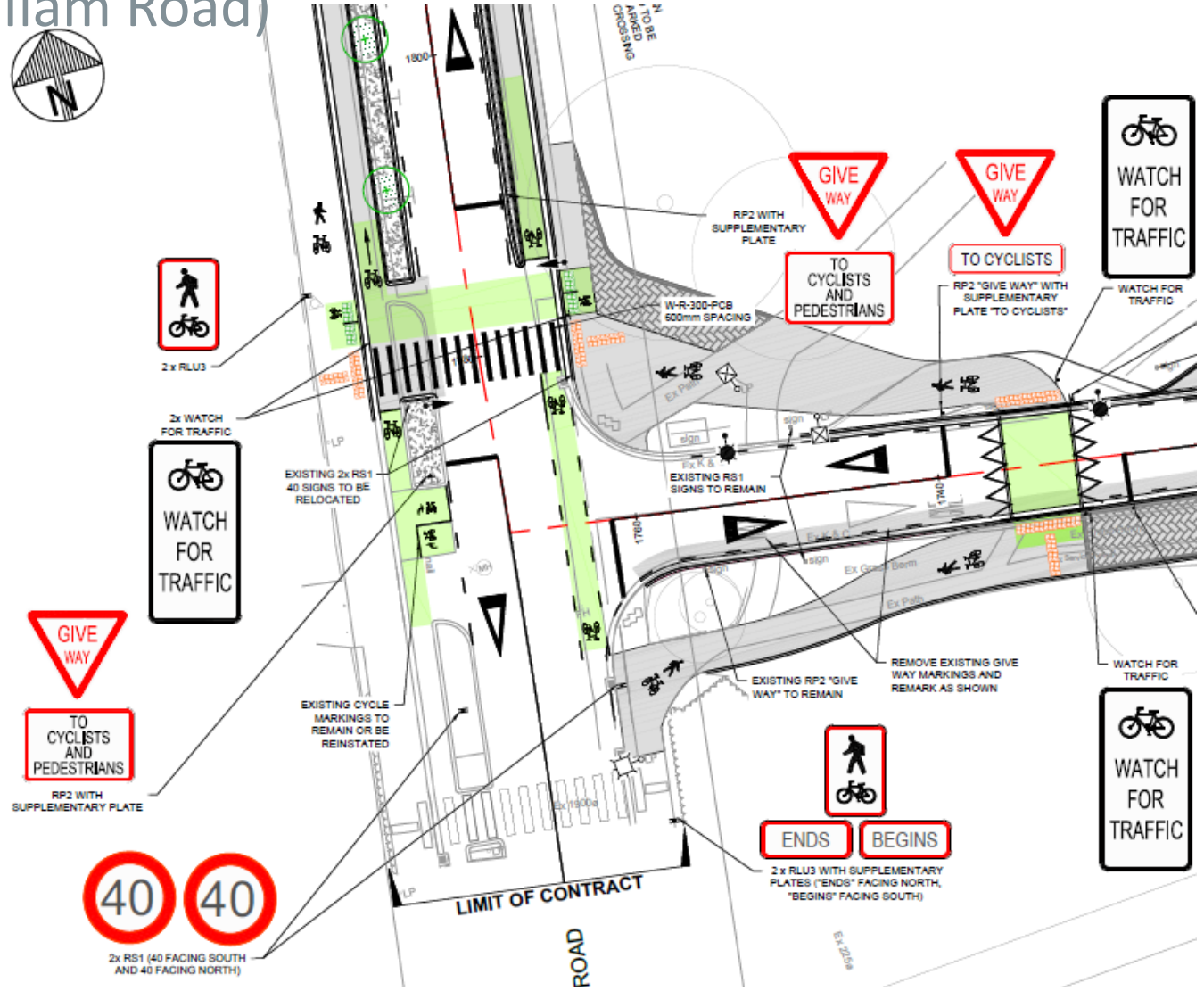
# Uni-Cycle Route

Riccarton Bush



# Uni-Cycle Route

## Priority Crossings (Ilam Road)



# University Link Route

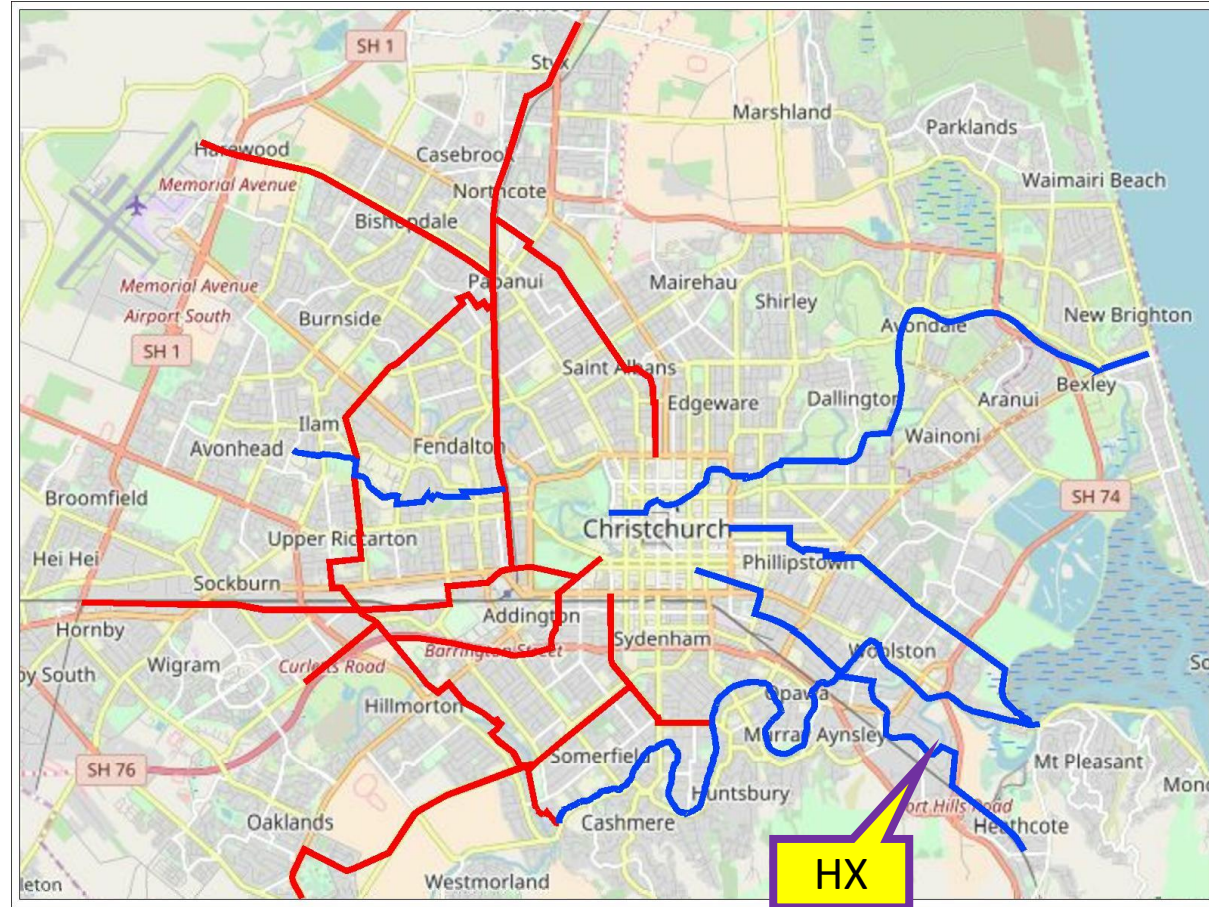
## Ilam Road Chicane



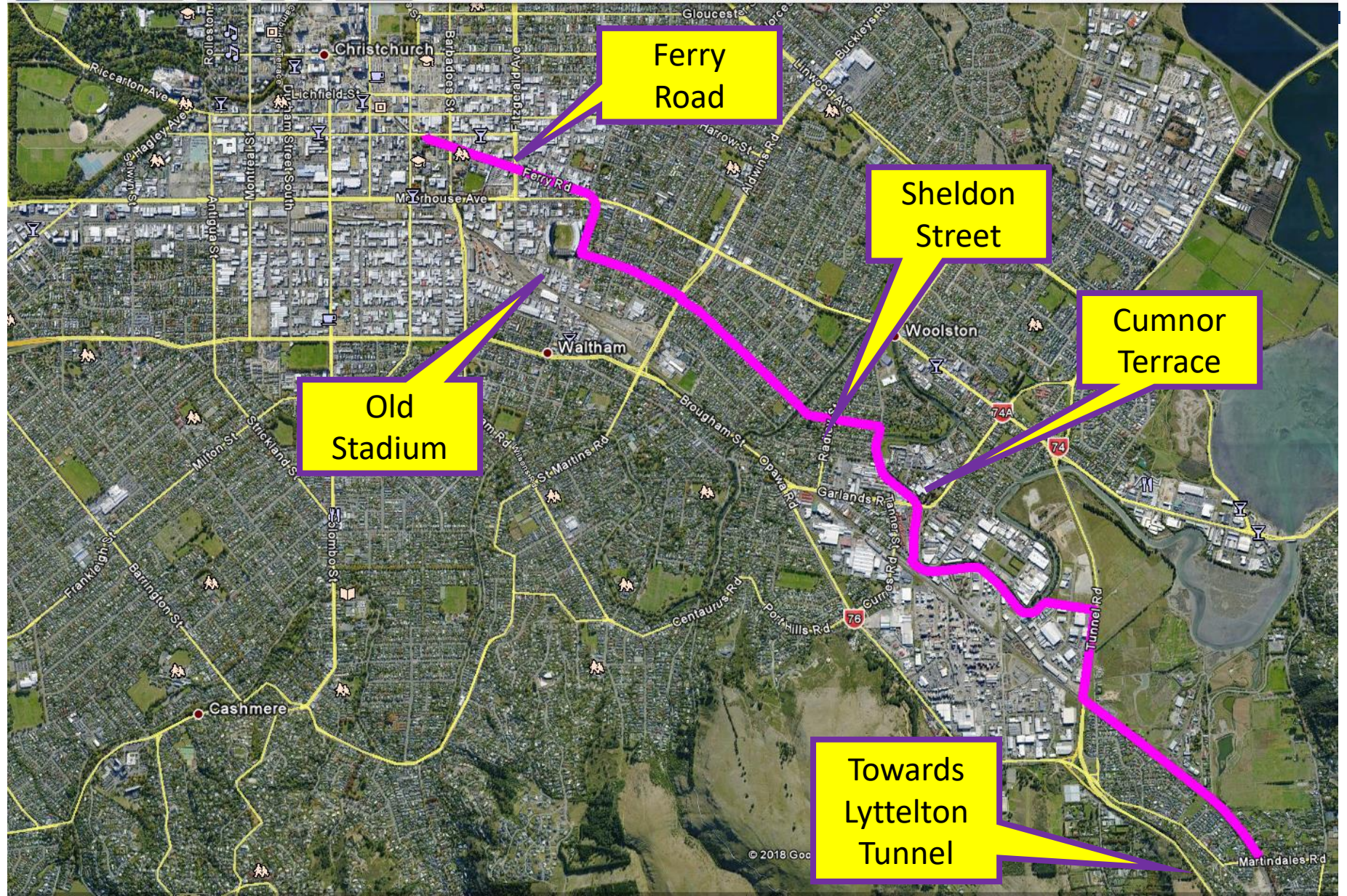


# Heathcote Expressway Route

## Overview



# Heathcote Expressway Route



# Heathcote Expressway

Charles St & MacKenzie Ave (Retrofitted Greenway)



# Heathcote Expressway Route

## Sheldon Street (True Greenway)

- Street Renewal
- Watermain replacement
- Public buy-in



VIEWPOINT 6 - MAJOR CYCLEWAYS - HEATHCOTE EXPRESSWAY - SHELDON STREET - LOOKING EAST





# Heathcote Expressway Route

Sheldon Street



# Heathcote Expressway Route

## Ferry Road

- Commercial/Industrial
- 10,000 AADT & Bus Route
- On-Road parking very important to community



# Heathcote Expressway Route

## Ferry Road



# Heathcote Expressway

## Cumnor Terrace

- Industrial Zone
  - Currently Abandoned
  - Overflow Parking
  - Contaminated Ground
- Sensitive Ecology Area
  - Inanga Spawning
  - Desire to keep as much of existing river vegetation as possible



# Heathcote Expressway Route

## Cumnor Terrace – Proposed Solution = 1-Way Traffic

- 1-Way Traffic



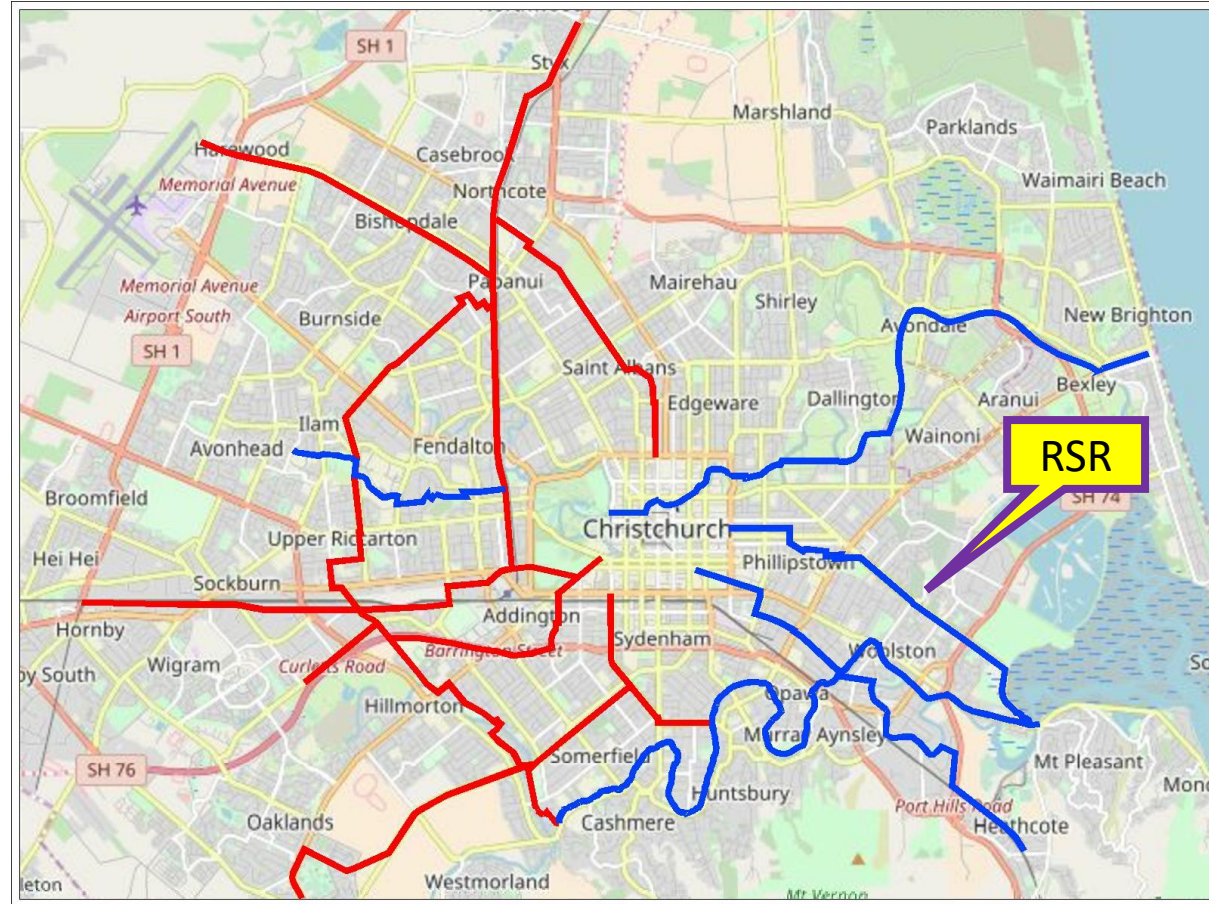
- 2-Way Traffic





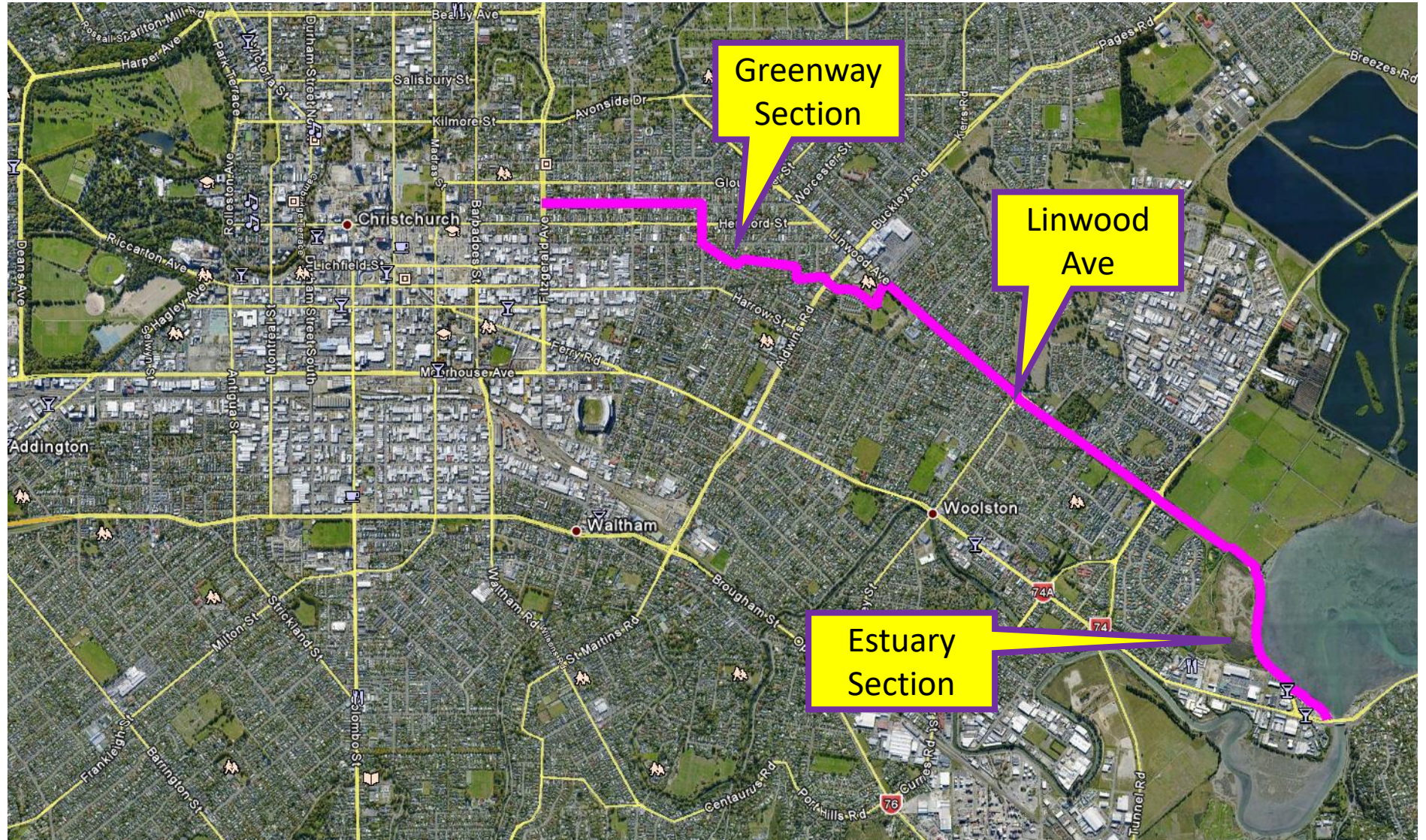
# Rapanui-Shag Rock Route

## Overview





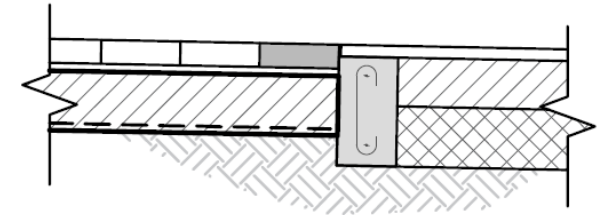
# Rapanui – Shag Rock Route





# Rapanui – Shag Rock Route

Linwood Avenue



**A**  
024 **PERMEABLE PATH  
CONSTRUCTION**  
NTS



# Rapanui (Shag Rock) Cycleway

## Signalised Intersections (Arterial Roads)





# Rapanui (Shag Rock) Cycleway

Unsignalised Intersections (Minor Arterial/Collector Roads)



# Rapanui (Shag Rock) Cycleway

Worlds bumpiest street

## **stuff**

Christchurch's Worcester St now one of the world's bumpiest streets



ALDEN WILLIAMS/STUFF

Worcester St in east Christchurch is vying for the record for most speed bumps in a street.

Christchurch's Worcester St has been given a very bumpy makeover.

The street is part of the Rapanui-Shag Rock Cycleway, one of the Christchurch City Council's 13 new major cycle routes.

Within 800 metres, there are 10 speed bumps and humps – humps being a gentler, wider version of a speed bump.



# “Modified” Neighbourhood Greenways

Hinau Street

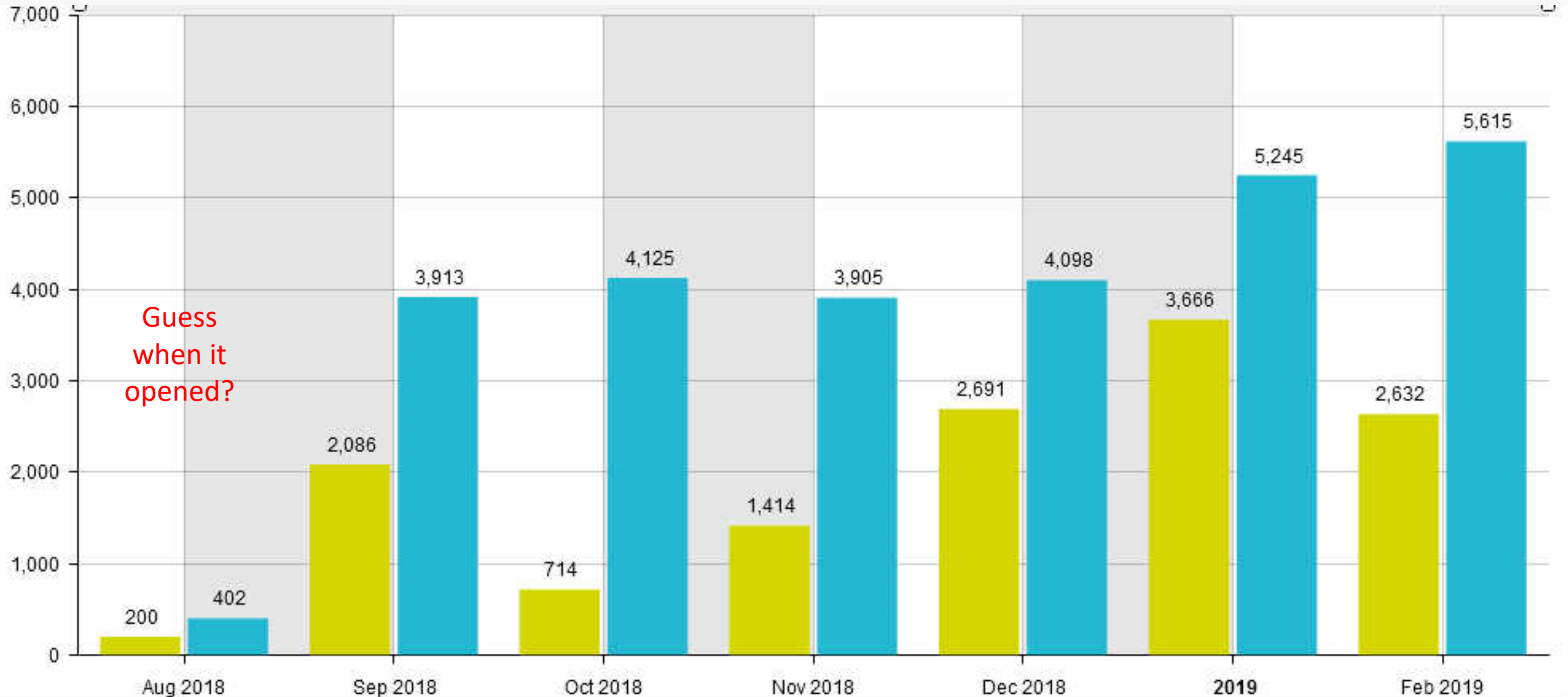


Worcester Street



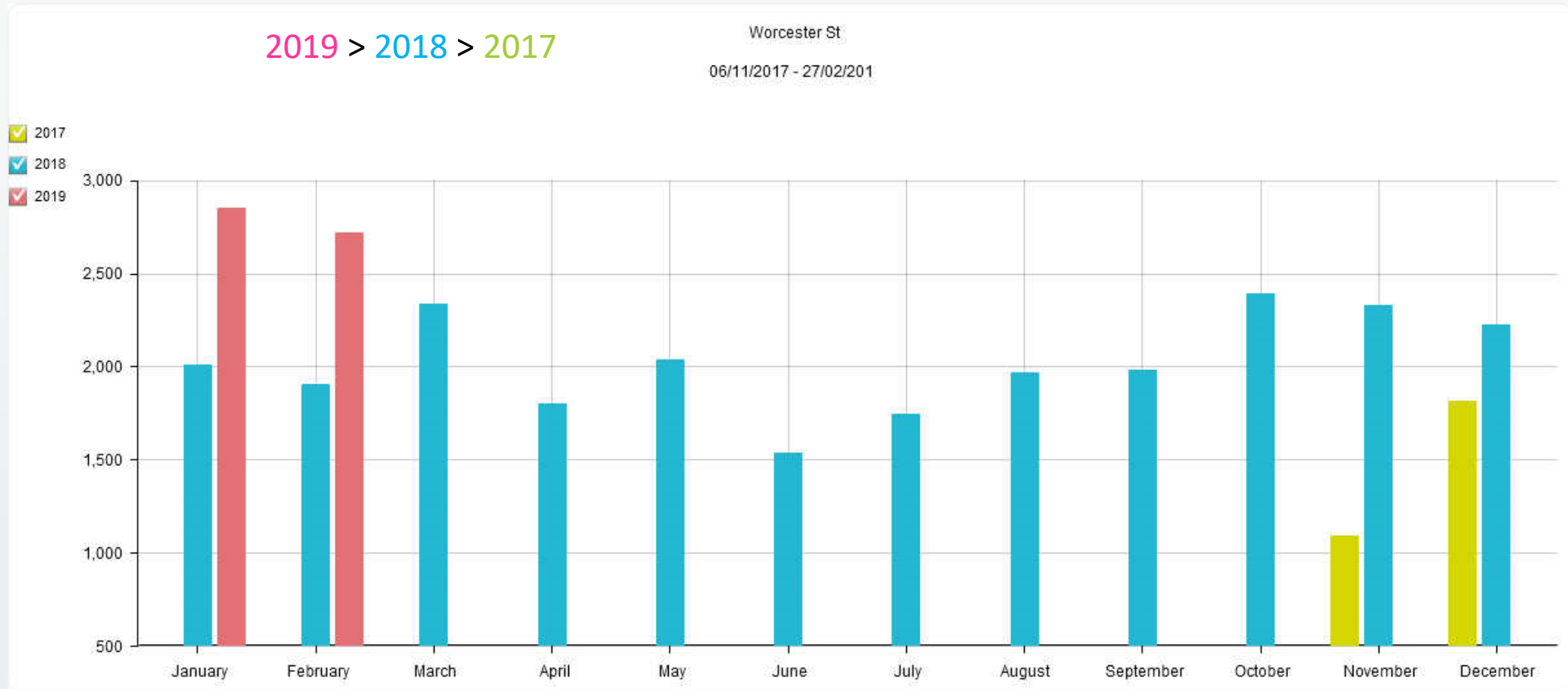
# Rapanui Shag Rock Success

## Linwood Ave



# Rapanui Shag Rock Success

## Worcester Street



# Overall MCR Success?

---

## For MCRs older than 18 months

- Uni Cycleway - Year two 58% higher than year one
- Papanui Parallel – Year two 32% higher than year one
- Little River – Year two 23% higher than year one

### 2017 USER SURVEY

- 31% Biking more often
- 70% have used new MCRS
- 82% users agreed “more pleasant”

### 2018 USER SURVEY

- 94% users feel safer
- 15% new cyclists
- 40% female

We don't always get what we want!

---







# Thanks For Not Falling Asleep

---

Questions?

