



A Loveable approach to infrastructure

Presenter: Andrew Metge





★
**Shifting the
paradigm from
Liveable
→ to Loveable**



It's not just a road...



It is....



A place of cultural significance



A place of commerce



A place to relax



A place for leisure

FORM



**Place
Identity**

Activity

**People's
Experience**

FUNCTION

The Loveable Framework



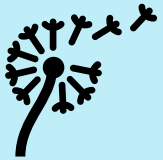
Postcards from the Future

I love



What I **LOVE** about Cameron Road

I wish



What I **WISH** for its future

I wonder



I **WONDER** what we could do now



"20 year old bottles found by Greenwood Park students"



"New Cameron Road Community Gardens provides links to the Past"

"Best crop ever from Gate Pa Community Centre"



Sustainable



"Heritage post initiatives"

Culture and History



"Cameron Road re-wilded"



"Cameron Road Fun Run celebrates 10th year"



"Bus-less centres"



"Safe recreation destination opens in Greerton Village"

Safe



"From most car dependent city to least in 18 years"



Multi-modal

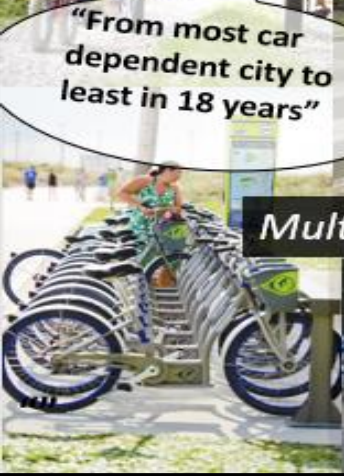


Less cars



"Rare moment! Man uses car"

"Business booms in Greerton Village (Day and Night)"



More fun than a bus, skateboards allowed in cycle lanes aka. Multi-modal



Thriving business



Let us go beyond liveable

1. Let us go beyond liveable
2. All infrastructure is social infrastructure
3. Place Identity and People Experience should be at the centre of design



Don't forget the little things...



* Thank You



Michala Lander
Technical Director – Social Planning
Michala.lander@ghd.com



Andrew Smith
Team Leader – NZ Advisory
Andrew.smith7@ghd.com



Andrew Metge
Technical Director – Transport Planning
Andrew.Metge@ghd.com