

# The Vision: Māngere, Bike Capital of the Pacific

2 Walk & Cycle conference, March 2024



Who are we?



# Who we are



# Overview - People and Place



# One team

One-Team promotes a collaborative and inclusive approach to problem-solving, leading to more successful and sustainable outcomes.

The One-Team approach fosters collaboration by integrating community partners directly into project teams.

Why we promote this way of working:

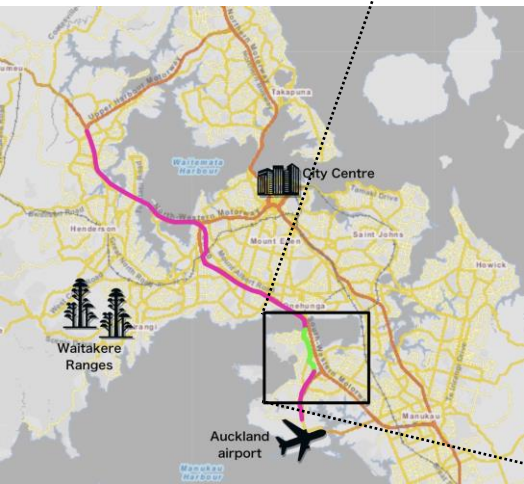
What's in it for you:

- Community partners bring valuable local knowledge.
- We can build long lasting relationships.
- The output meets the needs of the community while also being feasible to design and build.



# Māngere

- Location
- Employment
- Demographics
- Network



# Community Partners









# How are we working with Community Partners in Māngere?



# Māngere Streets for People project locations.

Part of the wider future Māngere network.



Coronation Road, Māngere Bridge



Robertson Road, Māngere



Māngere Town Centre

# Community Partner involvement.

## Codesign workshops



- Finding participants.
- Setting the scene / room.
- Advising on engagement strategy.
- Providing local catering.

## Engagement & investigation



- Engaging with wider community.
- Pre and post-trial observations.
- Assisting with stakeholder relationships, e.g., Local Board, marae.

## Activation during delivery



- Planning activation strategy.
- Promoting events via local channels.
- Delivering, 'fronting', documenting events.

# Benefits of this type of engagement and partnership.

## For the community:

- Able to inject local needs into projects.
- Provides a personal face to a big organisation.
- Development of local capability for future delivery alongside AT.

## For the project:

- Alignment with local needs.
- More successful wider engagement, activation.
- Community pride and sense of project ownership.
- Ultimately, increased likelihood of trial success - including future permanent changes.

## For AT, more widely:

- Community understanding of delivery processes, constraints.
- Relationships, reputation serve future projects in the area:
  - Local Board: "thank you for your listening, responsiveness, genuine community engagement."



*2023 Māngere West Cycling Consultation brochure.*



We've welcomed the opportunity to be part of the Collaboration Forum process, share our concerns and aspirations for the project, and work alongside others in the community to consider the options and constraints behind the proposal.

**Māngere Bridge  
Business Association**



**Where will this  
experience go?**



# Ready to Ride - Building capacity in communities

Some involve no 'hard' infrastructure at all.

These can also support cycleway projects:  
data, comms, relationships.



Skills training



Group rides



Bike to Sport programmes



Community celebration events



Bike to School programmes

# Physical assets as a seed for grass roots

Locations etc are best planned with the community.

Discussion point  
How to align with delivery teams/timeframes?



Bike Hubs



Bike parking



Wayfinding



Pump tracks



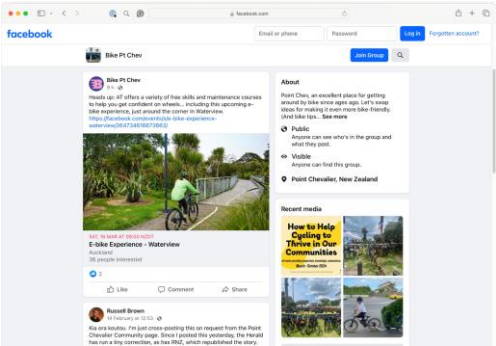
Bike repair stands



# Local communication is key

Focus on local opportunities for biking.

Ideally: planned, delivered - and fronted - by locals.



Local social media



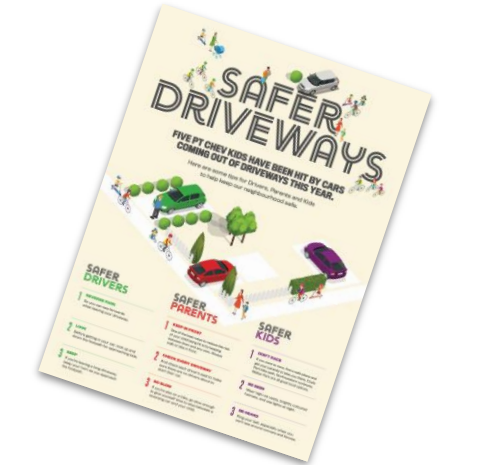
Community signage



Local ride maps



Community maildrops

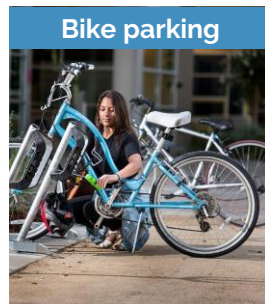
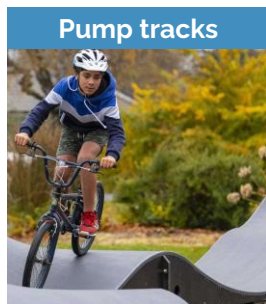


# Opportunities for the future.

**Communities have broader needs for how they get around. What we're hearing:**

- What about Public Transport? Can this be joined with cycleway trials?
- The pump tracks are awesome. Can we have more places to dwell and connect alongside street trials?

## 2023-24 key elements:



## Potential inclusion in future trials?



**Broadening the scope of trials could align more closely with what communities need and want.**

The relationships developed could allow future trials to be delivered faster, cheaper, and at larger scale.

**Wrap up**



# Addressing the current climate

## With lower budgets and more headwind, what steps can Councils and the Community take?

- Build/strengthen relationships now between existing staff and community partners/schools/businesses,
- Don't undervalue the benefit of activations,
- Make sure you're including time/budget for trials and activations in funding requests and business cases.
  - Which include adaptation and maintenance allocations.
- **Handout available to help with practitioners.**

# How can you get started?

Access a free resource about how to get started with Community Partnerships at:

[crank.nz/conference](http://crank.nz/conference)

