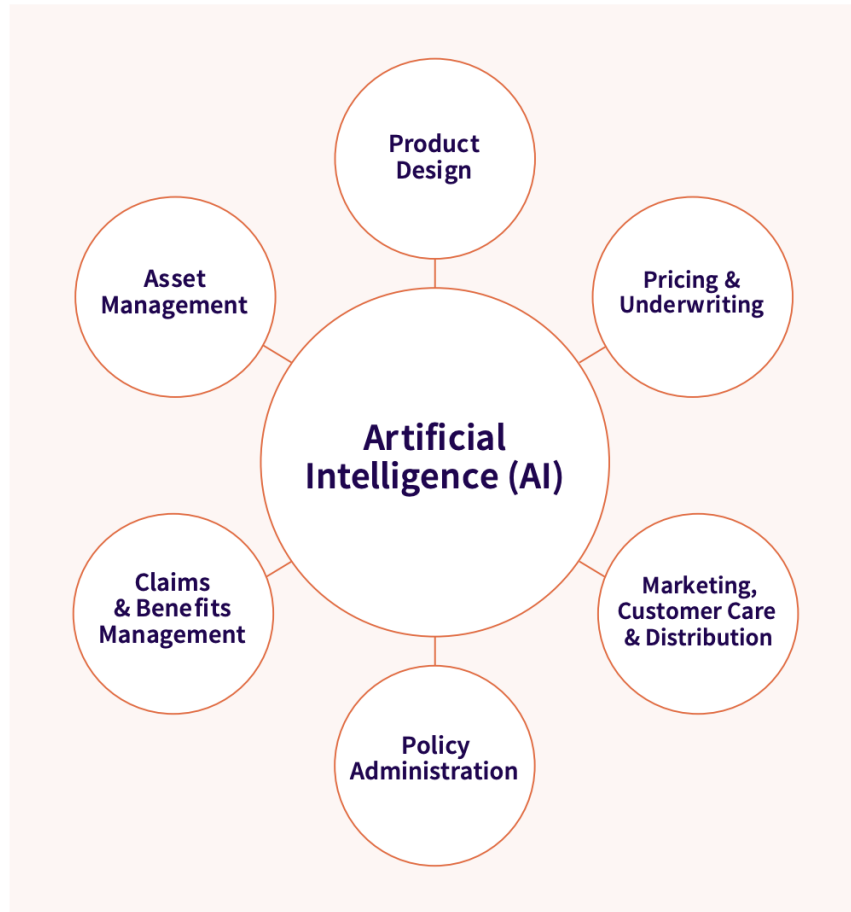


Implementing GenAI responsibly – An international perspective

Ethical AI Consulting | Aurelie Jacquet

AI & insurance



1. Safety, Security & Robustness
2. Appropriate Transparency & Explainability
3. Fairness
4. Accountability & Governance
5. Contestability & Redress

ABI's AI guide, practical ideas for getting started with responsible AI, February 2024

1 | Building bridges across international policy initiatives

What are ISO's international standards on AI?

25

Standards published

31

Standards under development

64

Countries involved

5

Working groups

>150

Experts involved



Liaisons with all major
international initiatives
(OECD, ITU, PAI, EC)

1

Pathway to certification:
AI management system
standard



NSW AI Assurance Framework



NSW gov AI projects to face new risk regime

By Justin Hendry
Dec 15 2021
12:18PM

0 Comments



From March 2022.

NSW government agencies will need to assess all projects that use bespoke artificial intelligence systems before deployment from March 2022 under a new framework aimed at identifying potential risks.

The **AI assurance framework** has been developed by the Department of Customer Service to assist agencies to design, build and use the technology “safely and securely”.



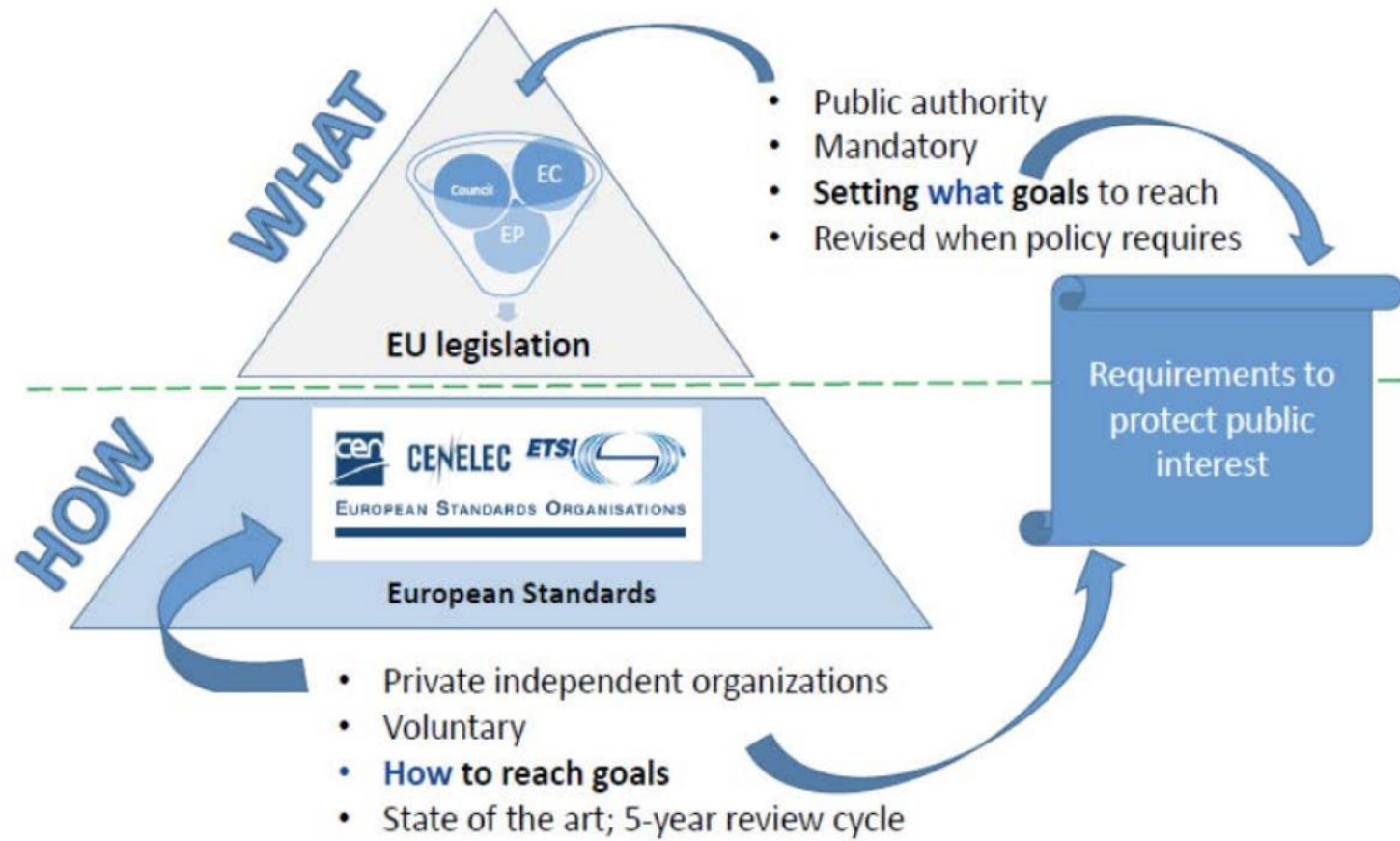
Mapping ISO to the work of NIST



The NIST roadmap for the AIMRMF cites alignment with international standards and production crosswalks to related standards as a top priority

NIST AI RMF to ISO/IEC FDIS 42001 AI Management system Crosswalk			
AI RMF		ISO/IEC FDIS 42001	
Govern 1.1	Legal and regulatory requirements involving AI are understood, managed, and documented.	4.1	Understanding the organization and its context
		6.2	AI objectives and planning to achieve them
		B.2.2	AI policy
		B.2.4	Review of the AI policy
Govern 1.2	The characteristics of trustworthy AI are integrated into organizational policies, processes, procedures, and practices.	B.9.3	Objectives for responsible use of AI system
		B.6.1.2	Objectives for responsible development of AI system
		B.6.1.3	Processes for responsible design and development of AI systems
		B.10.3	Suppliers
		B.2.2	AI policy
		4.4	AI management system
		5.2	AI Policy
Govern 1.3	Processes, procedures, and practices are in place to determine the needed level of risk management activities based on the organization's risk tolerance.	6.1.2	AI risk assessment
		6.1.1	General
		6.1.3	AI risk treatment

The EU AI ACT



2 | How Standards are helping

AI is not easy to develop

CHALLENGE

Helping getting started with AI

DATA

What kind of data do I need to get started with AI?

ISO/IEC 5259 series - Data quality for analytics and ML

- 5259 -1 - Overview , terminology and examples

ISO/IEC FDIS 8183 - Data life cycle framework

MODEL

What do I need to know and what processes should I follow to develop and implement an AI model?

ISO/IEC 23053:2022 – Framework for AI Systems using ML

ISO/IEC 24372: 2021 - Overview of computational approaches

ISO/IEC 5392 - Reference architecture of knowledge engineering

ORGANISATION

Where do I start for my organisation to better understand AI and consider AI initiatives?

ISO/IEC 22989:2022 – AI concepts and terminology

ISO/IEC DIS 5339 - Guidelines for AI applications

AI can be dangerous

CHALLENGE

The Risks

Keeping AI systems on a tight leash using dynamic risk management:

- Identifying the acceptable range of variation for performance of AI systems
- monitoring
- Adapting controls as required



Managing Risk and ensuring appropriate oversight

DATA

How do I know if my data is good enough to be processed by an AI system?

ISO/IEC 5259 series Data quality for analytics and ML
5259 -2 Data quality measures
5259-3 Data quality requirements and guidelines
5259-4 Data quality process framework

MODEL

How do I build safety functions?

ISO/IEC TR 5469 Functional safety & AI systems
ISO/IEC TS 8200 Controllability of automated AI systems
ISO/IEC 24029 Assessment of the robustness of neural networks
ISO/IEC TS 29119-11 Testing of AI systems

ORGANISATION

What are the AI risks I should consider? How do I manage them?

How can an organization have appropriate oversight of its AI systems?

ISO/IEC 23894:2023 Guidance on risk management
ISO/IEC 38507:2022 Governance implications of the use of AI by organisations
ISO/IEC 42001 Management system

The Ethics

From

“Can we do it?”

to

“Should we do it?”

Addressing Ethics

DATA

How do I identify and manage algorithmic bias?

ISO/IEC TR 24027:2021 - Bias in AI systems and AI aided decision making

ISO/IEC TS 12791 – Treatment of unwanted bias in classification and regression ML tasks

MODEL

How do I ensure AI systems are trustworthy?

ISO/IEC TS 6254 - Objectives and approaches for explainability of ML models and AI systems

ISO/IEC 12792 – Transparency taxonomy of AI systems

ISO/IEC TR 24028:2020 - Overview of Trustworthiness in AI

ORGANISATION

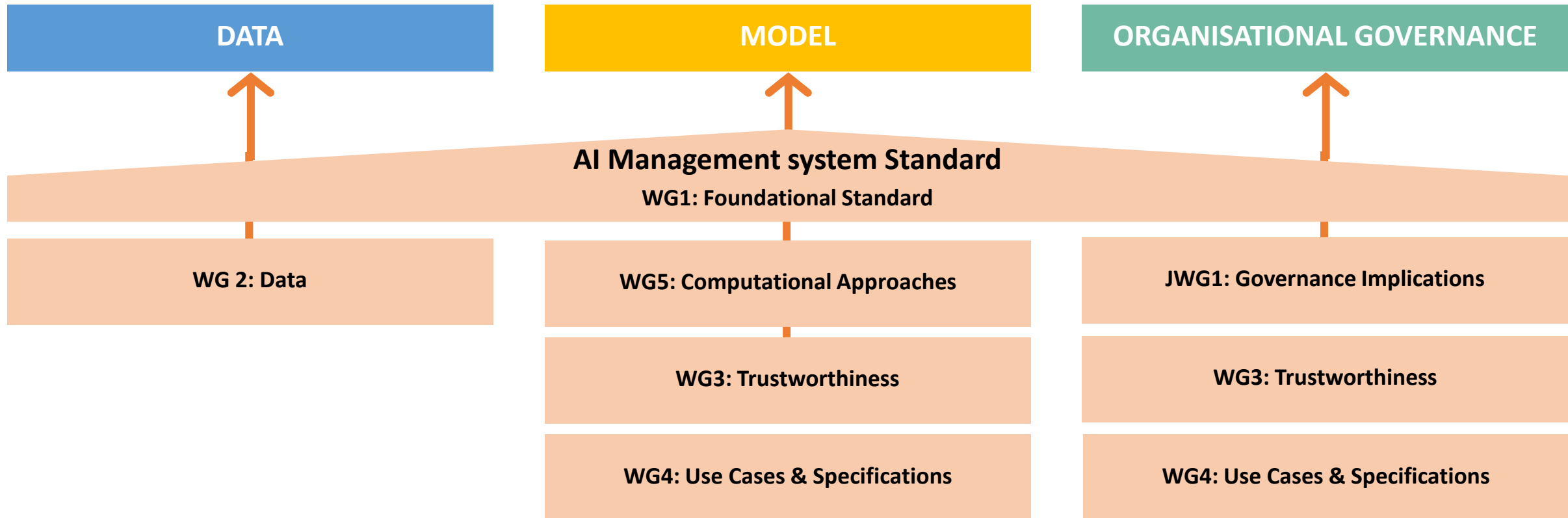
What are the key ethical and societal concerns I need to consider? How can I address them?

ISO/IEC TR 24368:2022 - Overview of ethical and societal concerns

ISO/IEC/ 42105 Guidance for human oversight of AI systems
ISO/IEC 42005 – AI system impact assessment

Providing an AI Assurance Framework

AI Assurance Framework



Standards' work relies on the 3Rs formula

Robust repeatable process + **R**ecognised internationally = Scale AI **R**esponsibly



Trust