



Hemo

SH5/SH30 Hemo Gorge
New Zealand Transport Agency

Knitting



Weaving

The image shows a detailed view of a woven bamboo mat. The mat is composed of numerous thin, light green bamboo strips woven together in a complex, repeating pattern. The strips are oriented in different directions, creating a textured, three-dimensional appearance. The color of the bamboo varies slightly, with some areas appearing more vibrant green and others more muted or brownish. In the upper left corner, there is a dark grey rectangular box with the word "Weaving" written in a white, sans-serif font. A thin white vertical line is visible on the left side of the mat, extending from the text box down towards the center.



WELCOME

TO *Fabulous*

ROTOVEGAS

NEW ZEALAND

Skyline

NZ's 4th Most Dangerous Intersection



Knitting



Recreation

Land Uses

Cycle Trail

Education

Recreation

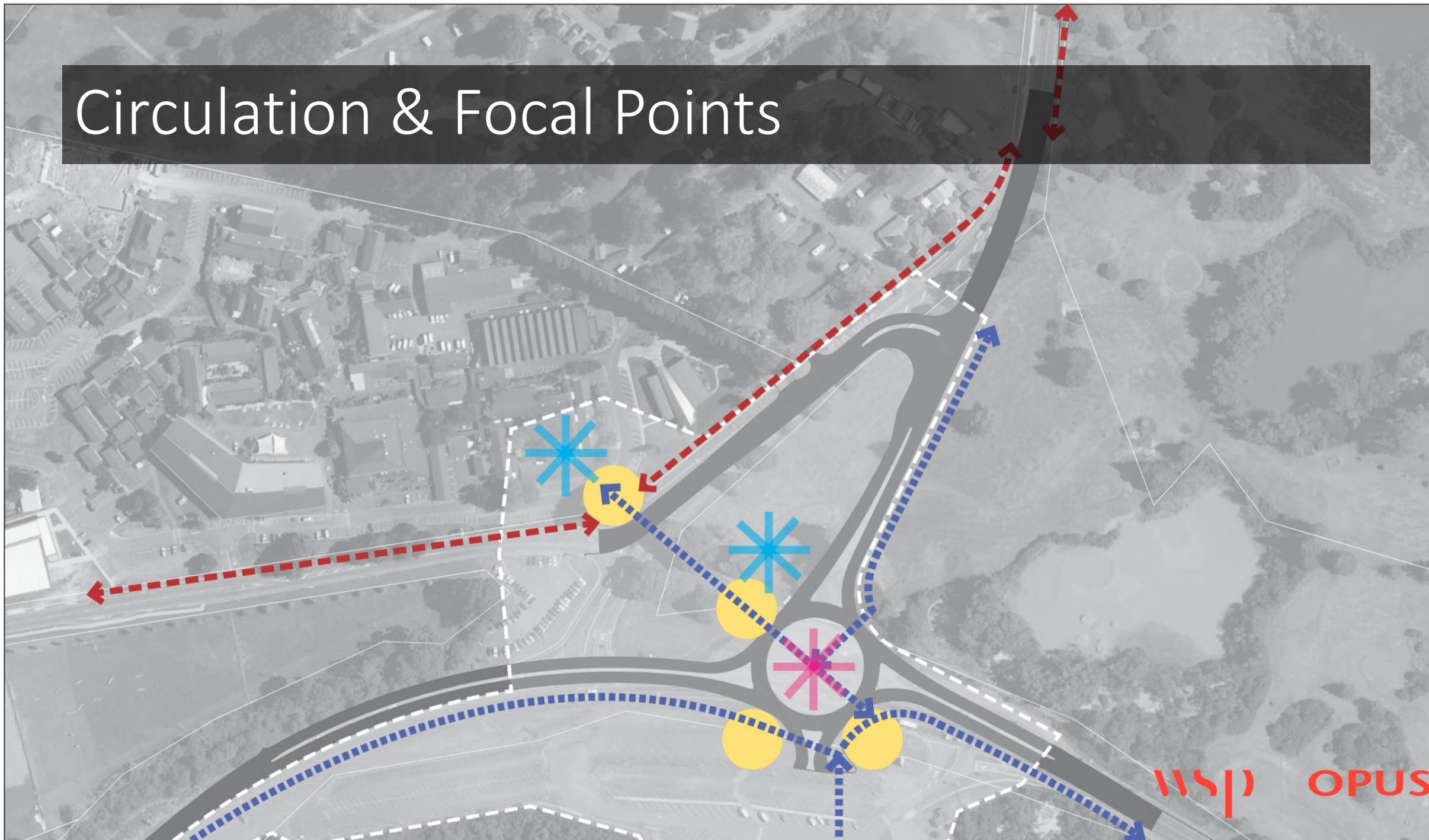
Urban Gateway

Recreation

Tourist Attraction



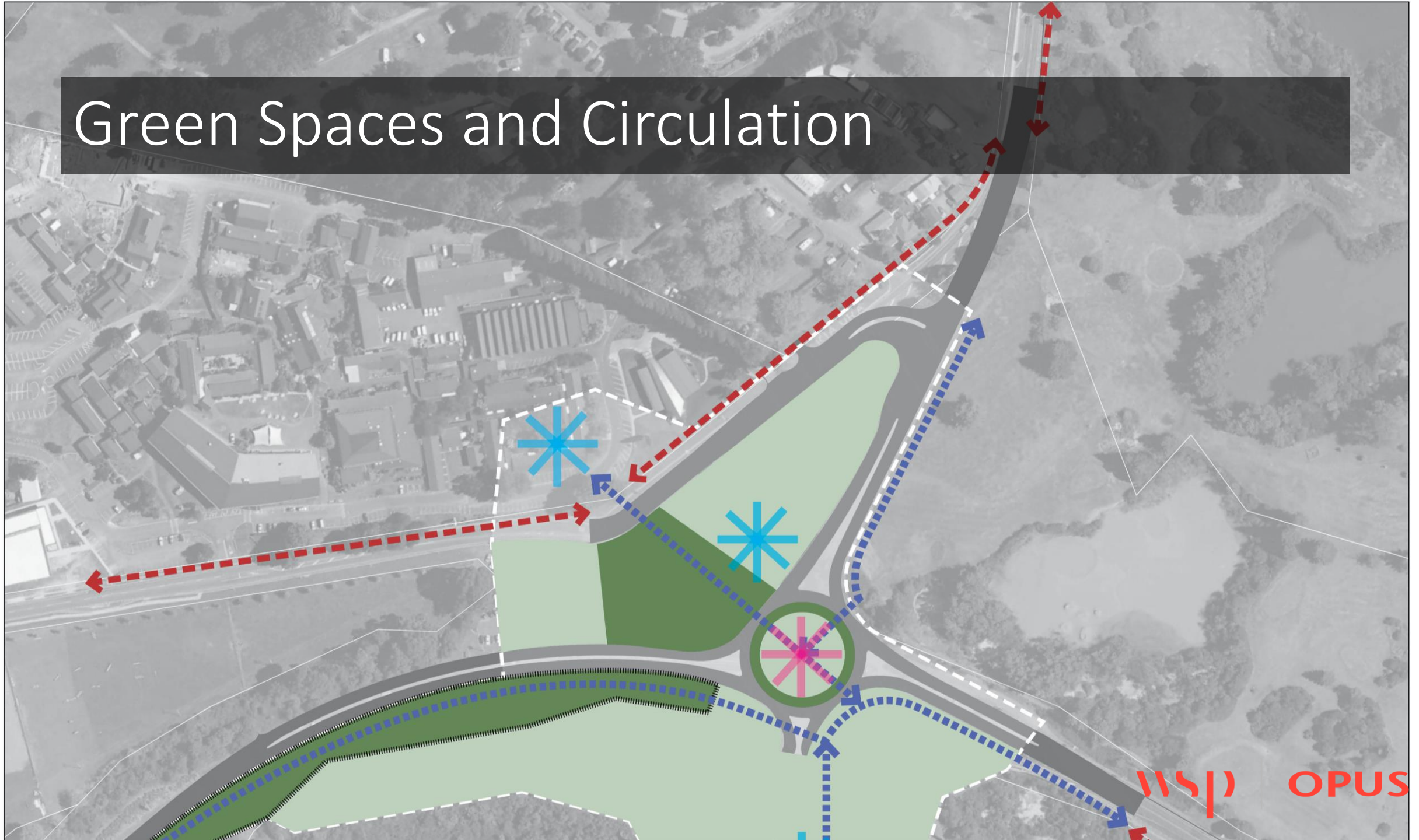
Circulation & Focal Points



Edges



Green Spaces and Circulation



Knitting



WSJ

OPUS

Masterplan

- EXISTING BOUNDARIES
- VEGETATED SWALE
- LAWN (PARKLAND SETTING)
- NATIVE PLANTING (LOW GROWING)
- NATIVE PLANTING (MEDIUM)
- RIPARIAN PLANTING (SWALE)
- DECORATIVE PAVING TYPE 1
- DECORATIVE PAVING TYPE 2
- DECORATIVE PAVING TYPE 3
- POU FEATURE / ARTWORK
- EXISTING CYCLE TRACK TO WAIPA FOREST AND NATIONAL CYCLEWAY



POSSIBLE FUTURE BUILDING DEVELOPMENT

CENTENNIAL
PARK

Project

WAJARIKI
INSTITUTE OF
TECHNOLOGY

MOKOIA DRIVE

OLD FAUPO ROAD

ROTORUA GOLF
COURSE

SH30 (HEMO ROAD)

HEMO ROAD

RESERVE/PONY
CLUB

TE PUIA

Section



ROUNABOUT CROSS SECTION

SCALE: 1:200 (A1) 1:400 (A3)

Water Sensitive Design, and Sightlines



Remoteness and Surveillance



Detailing the Big and the Small



KPI's

A Plug for Knitting...!

- Was NZ's fourth riskiest intersection
- 50% reduction in the crash rate
- Was - February 2014, 12,500 vehicles (incl 1500 trucks) , 140 cyclists and 80 pedestrians per day.
- Now - 218 cyclists and 214 pedestrians per day travelling through the underpasses.





1 Overall image of the roundabout in context to the geothermal landscape. 2 Rain garden along pathway. 3 Centre RTB seat over sculpture foundation 4 Cocentric circle design within the underpass. 5 Sculpture foundation. 6 Geothermal lake along the location.

SH5/SH30 HEMO GORGE INTERSECTION IMPROVEMENTS

WSP Opus for NZ Transport Agency

Project Location: Rotorua





SH5/SH30 Hemo Road intersection improvements