

Cycling in South Auckland A Community Approach

Transportation Group Conference – March 2023

Michael Jongeneel, Flow Transportation Specialists

James Georgetti, Flow Transportation Specialists

Jake Cannan, Auckland Transport

Māngere East and Manukau cycling projects

Project background

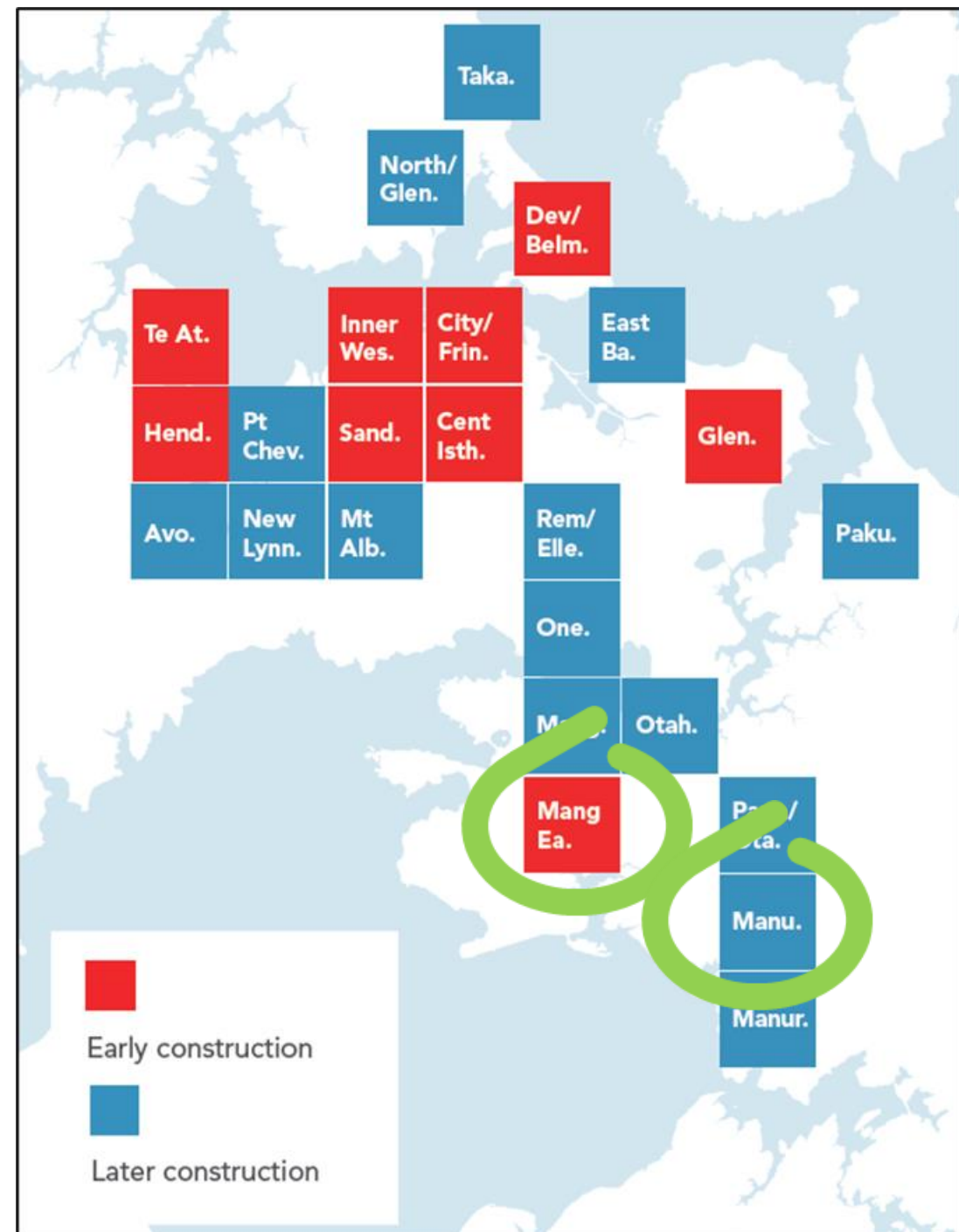
Project Overview

Part of the **Auckland Cycling Programme** for Tāmaki Makaurau

Māngere East and **Manukau** were both identified as **priority areas for cycling investment**

Improved cycling in South Auckland will contribute to:

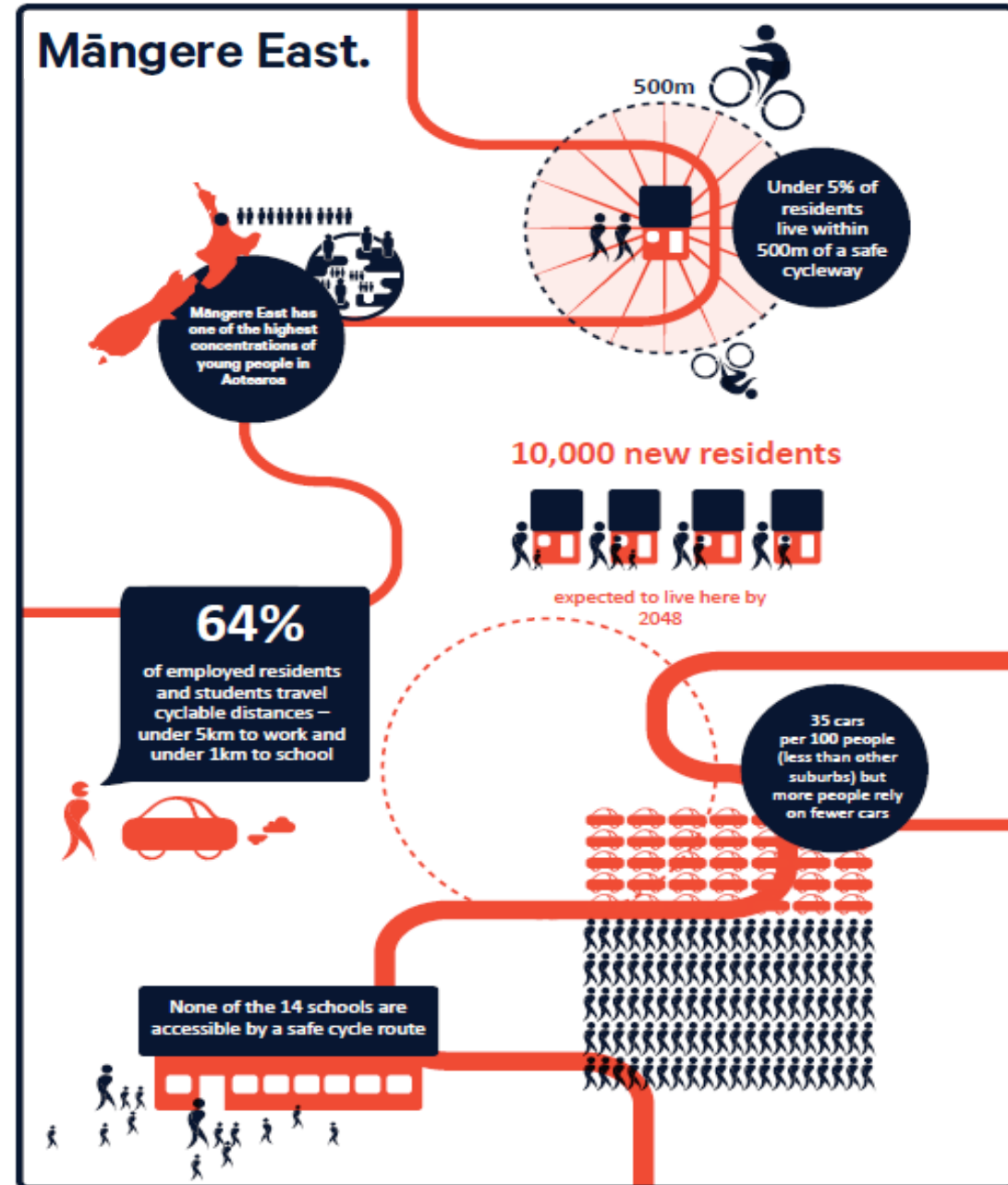
- Affordable access and travel choice
- Better health and wellbeing outcomes
- Less congestion, lower carbon emissions and better air quality



Māngere East

Great potential for cycling!

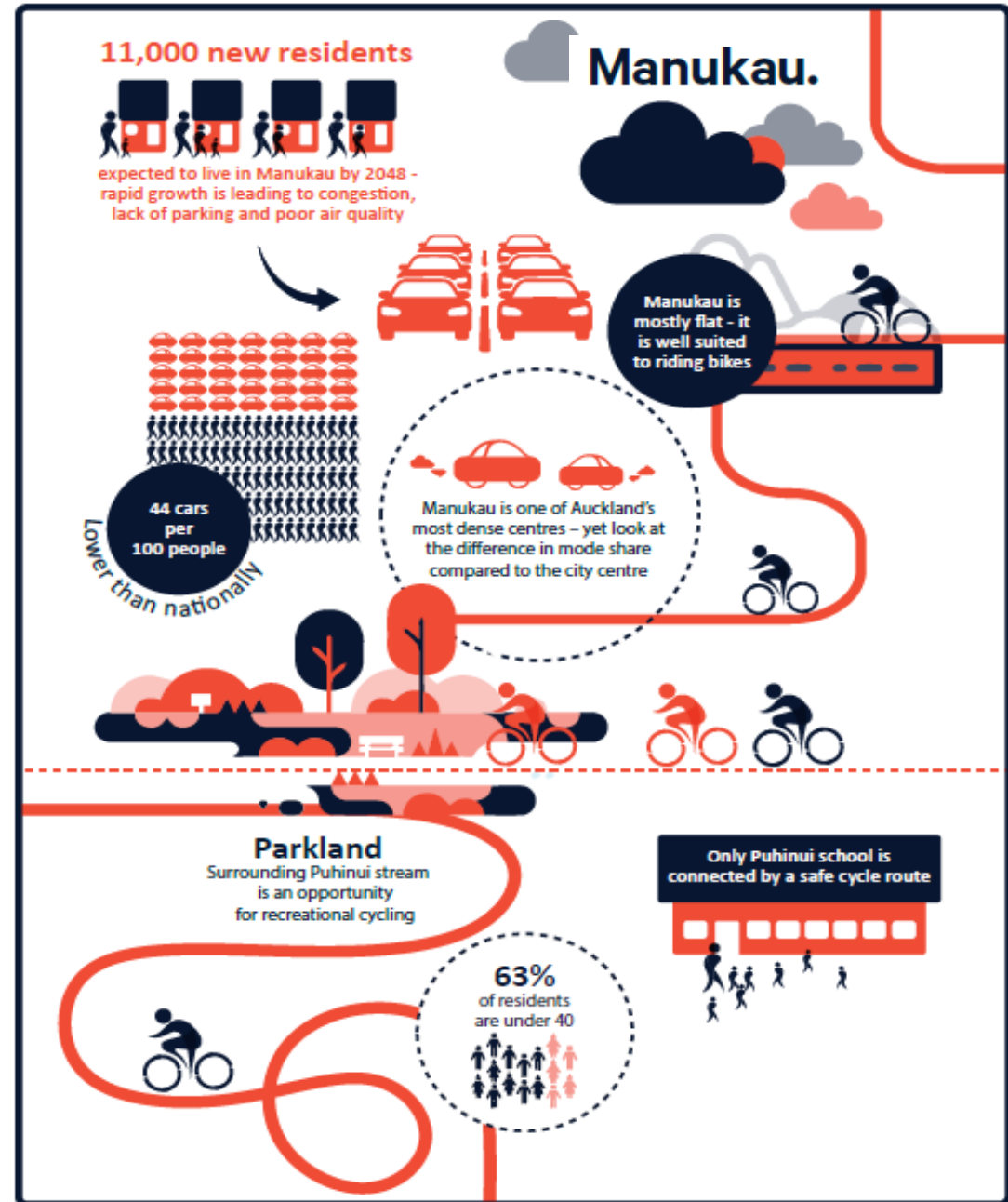
- Pancake flat
- High concentration of young people
- Lots of short trips:
 - Commute to work: 64% less than 5km
 - 14 local schools & kura
- 37,000 residents
- 10,000 more expected by 2048
- Local bike champions
 - Triple Teez (Time To Thrive)
 - Mr T



Manukau

Also great!

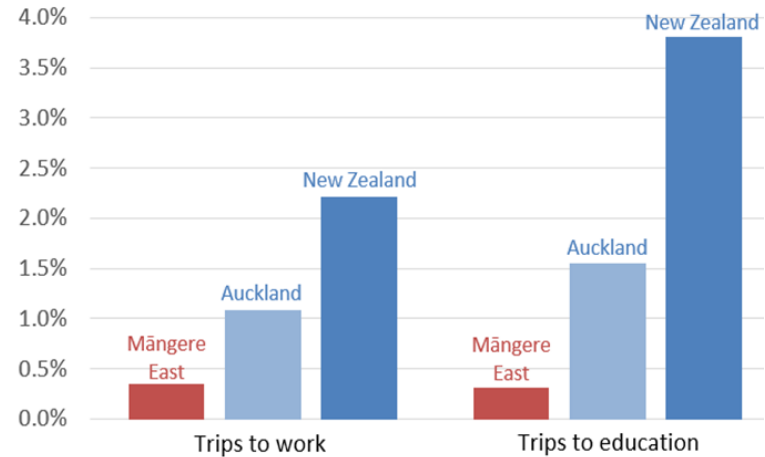
- Also mostly flat
- 63% under 40 years old
- 17,000 residents
- 19,000 jobs
- 2 tertiary institutions
- Very high growth expected
 - +11,000 residents by 2048
 - +6,000 jobs
- Local bike champions:
 - Manukau Bike Burb
 - Ōtara Bike Burb



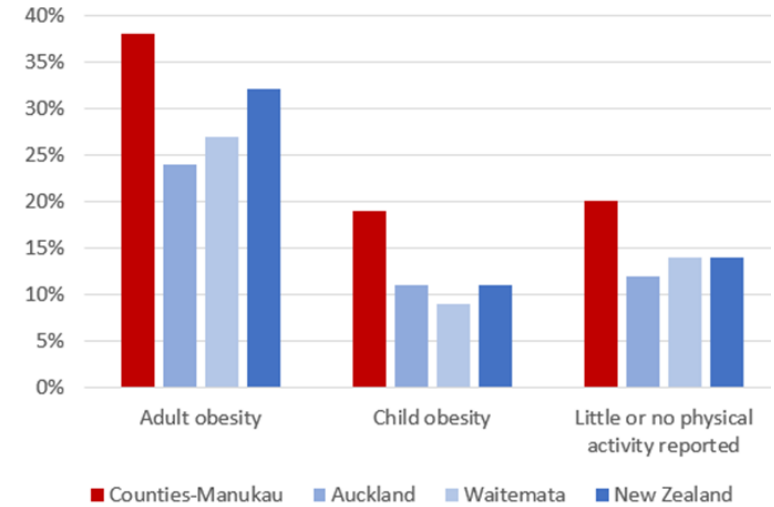
And yet... some sobering stats

Eg in Māngere East

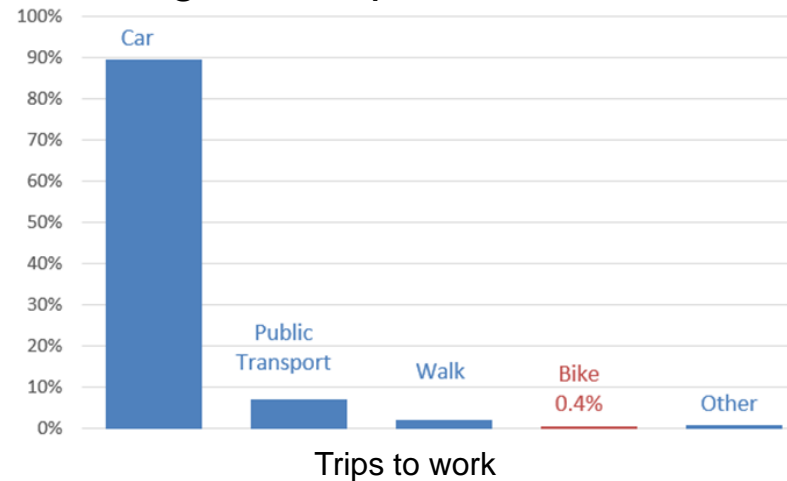
Low bike mode shares



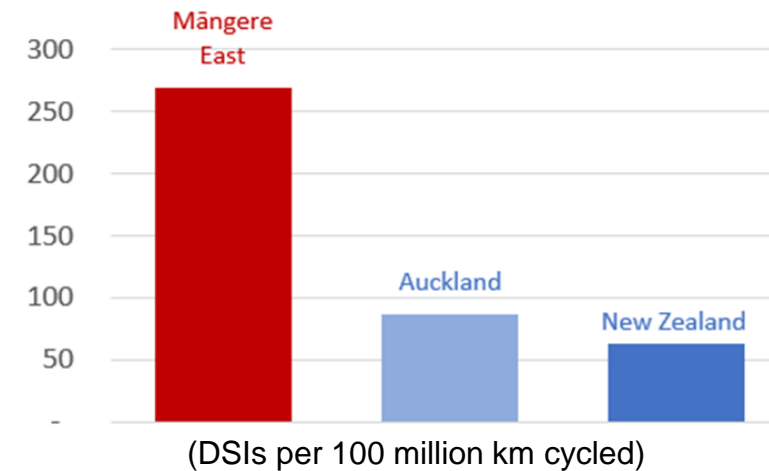
Poor health outcomes



High car dependence



Poor road safety outcomes



Barriers to cycling

Not just lack of infrastructure

- Lack of access to bikes
- Large household sizes
- Shift workers
- Societal norms/expectations
- Stigma around cycling
- Bike theft
- Personal security (crime, stray dogs)
- Perception that there are bigger problems to address

Cycling just not on people's radar

2x very cycle-hesitant communities



Barriers to cycling

Checked history of interventions

- Perception that changes happen TO south Auckland
 - Not necessarily WITH south Auckland
 - Nor FOR south Auckland
- Mistrust of Council and Government agencies
- Mixed response to past cycle investment

Street in Māngere central, Dec 2019



Barriers to cycling

Checked history of interventions

- Perception that changes happen TO south Auckland
 - Not necessarily WITH south Auckland
 - Nor FOR south Auckland
- Mistrust of Council and Government agencies
- Mixed response to past cycle investment

Street in Māngere central, Dec 2019



The same street, Aug 2022



Involving the community

Community Partner Working Group and public engagement

Why these projects?

- Lower levels of engagement
- Distinct social and cultural context
- Pushback on other cycling projects
- An awesome opportunity

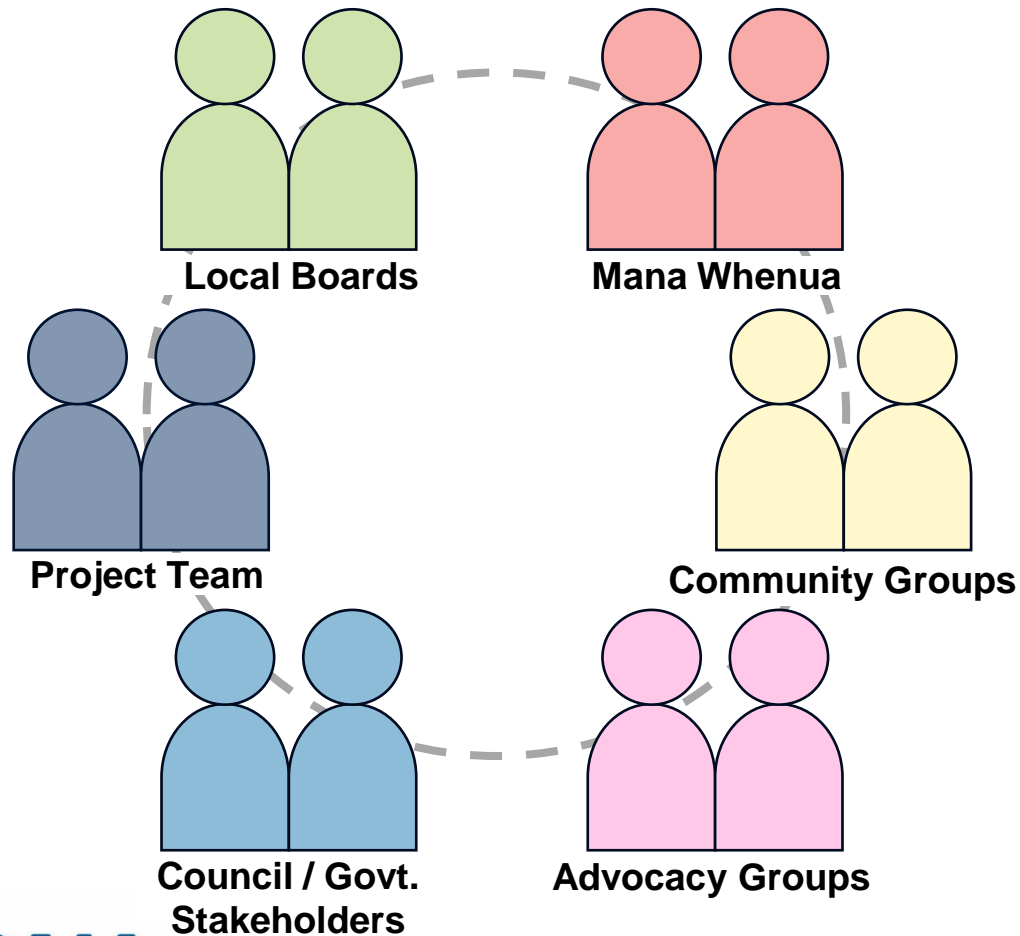


Engagement Philosophy

- Start early, engage continuously
- Focus on whanaungatanga – building relationships
- Work locally and make it feel local
- Respect peoples' time and make it easy
- Support and build on local initiatives



Community partner working group (CPWG)

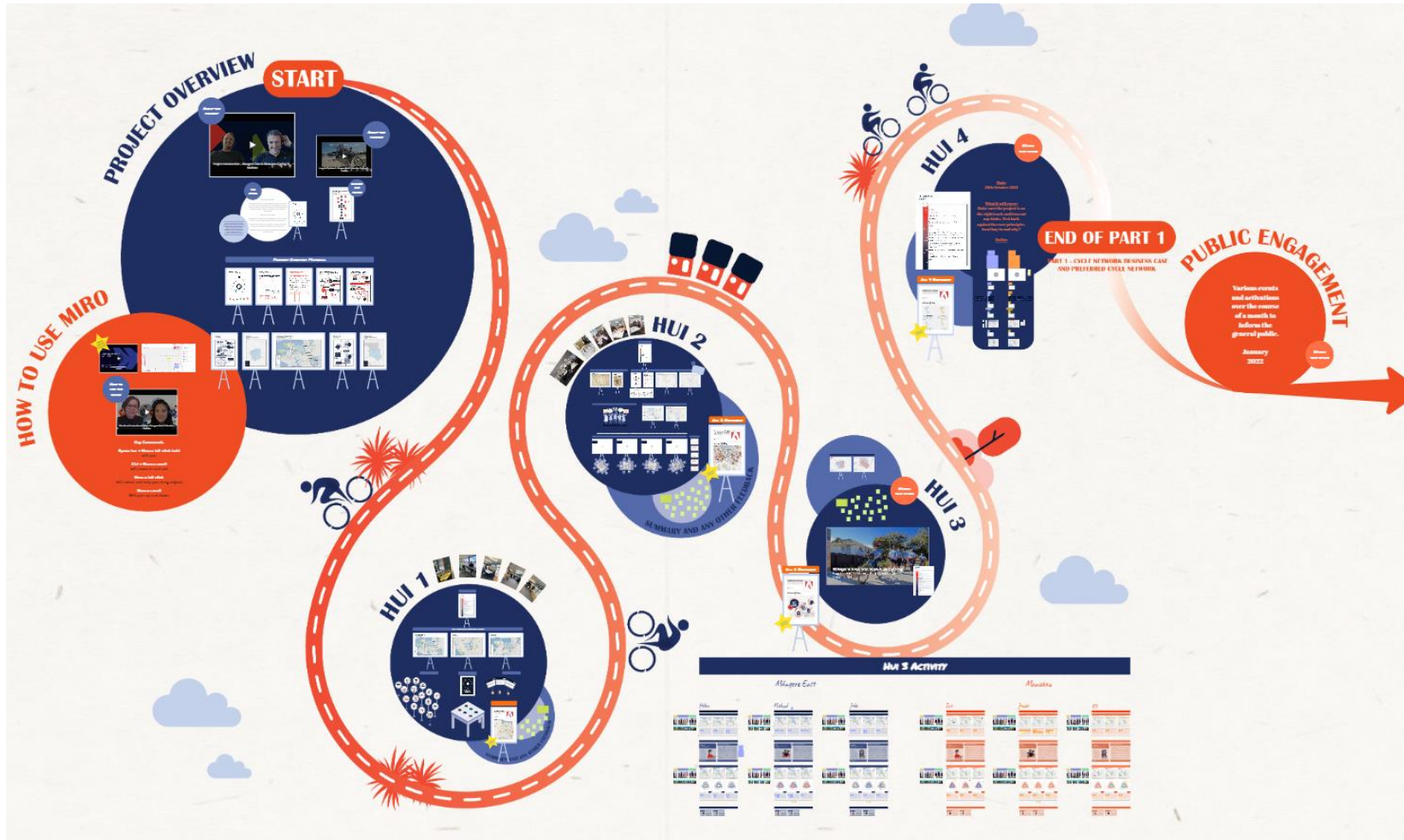


- Bring in local perspectives and knowledge
- Reflect the culture and identity of Māngere East and Manukau
- Help the flow of information between the project and the community
- Bring diverse perspectives together in one room - build connections and understanding

Community partner working group



Lockdown - moving online



Write your name here

Māngere East or Manukau

- 1 Review all the scenario cards below. Write new scenarios (one per card) if you think something is missing using the blank ones provided.

Education How do you think education will be affected by the lockdown?	Health How do you think health services will be affected by the lockdown?	Local jobs How do you think local jobs will be affected by the lockdown?	Communities How do you think communities will be affected by the lockdown?	Public services How do you think public services will be affected by the lockdown?	Training How do you think training will be affected by the lockdown?	Accommodation How do you think accommodation will be affected by the lockdown?
Local business How do you think local businesses will be affected by the lockdown?	Child health How do you think child health services will be affected by the lockdown?	Communities How do you think communities will be affected by the lockdown?	Access to services How do you think access to services will be affected by the lockdown?	Community safety How do you think community safety will be affected by the lockdown?	Religious How do you think religious services will be affected by the lockdown?	Commuting How do you think commuting will be affected by the lockdown?
Employment How do you think employment will be affected by the lockdown?	Transport How do you think transport services will be affected by the lockdown?	Public transport How do you think public transport services will be affected by the lockdown?	Open spaces How do you think open spaces will be affected by the lockdown?	Recreation How do you think recreation services will be affected by the lockdown?	Government How do you think government services will be affected by the lockdown?	Health care How do you think health care services will be affected by the lockdown?
Use to write your own And describe here	Use to write your own And describe here	Use to write your own And describe here	Use to write your own And describe here	Use to write your own And describe here	Use to write your own And describe here	Use to write your own And describe here

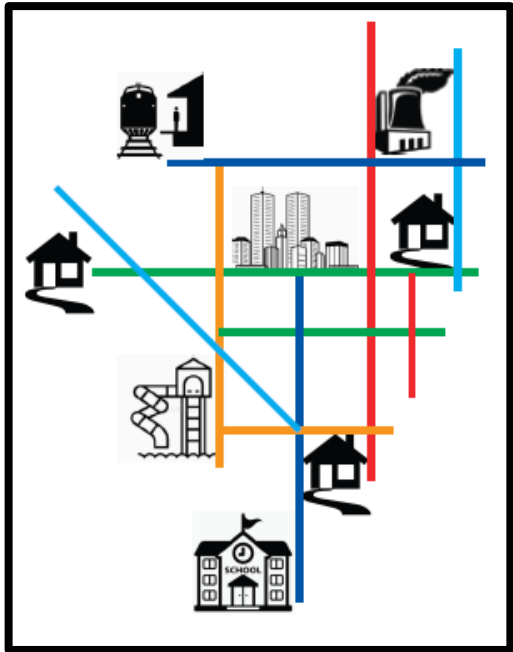
- 2 Select drag down the 10 cards you think are most important.

- 3 Using the 10 cards you selected above put them in order from most important to least important below.
1 being most important and 10 being least important.

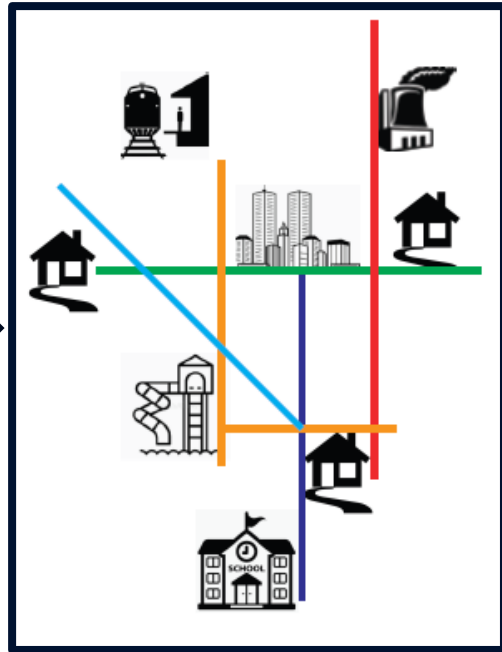
1	2	3	4	5
6	7	8	9	10

Cycle network development – feedback loop

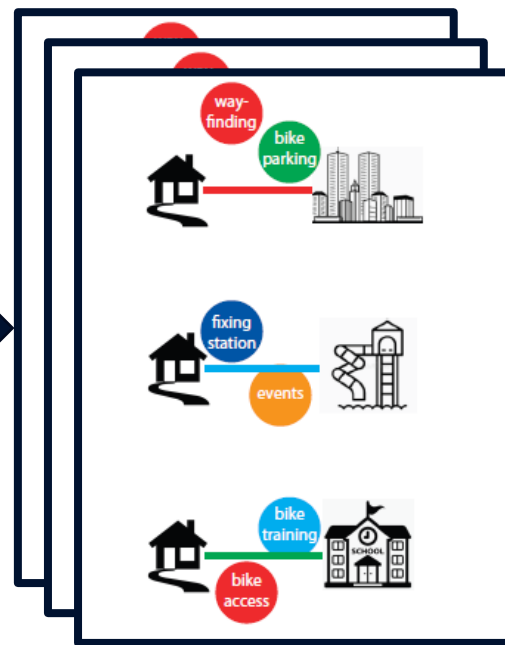
Ultimate Network



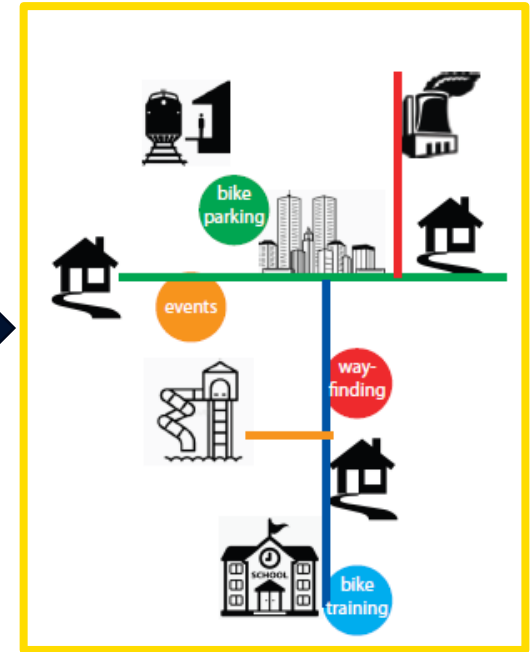
Aspirational Network



3x Network Options



Preferred Network



CPWG

CPWG

CPWG

CPWG

Local Boards

Mana Whenua

Local Boards

Mana Whenua

Local Boards

Mana Whenua

Local Boards

Mana Whenua

Technical SMEs

Technical SMEs

Technical SMEs

Technical SMEs

Public engagement

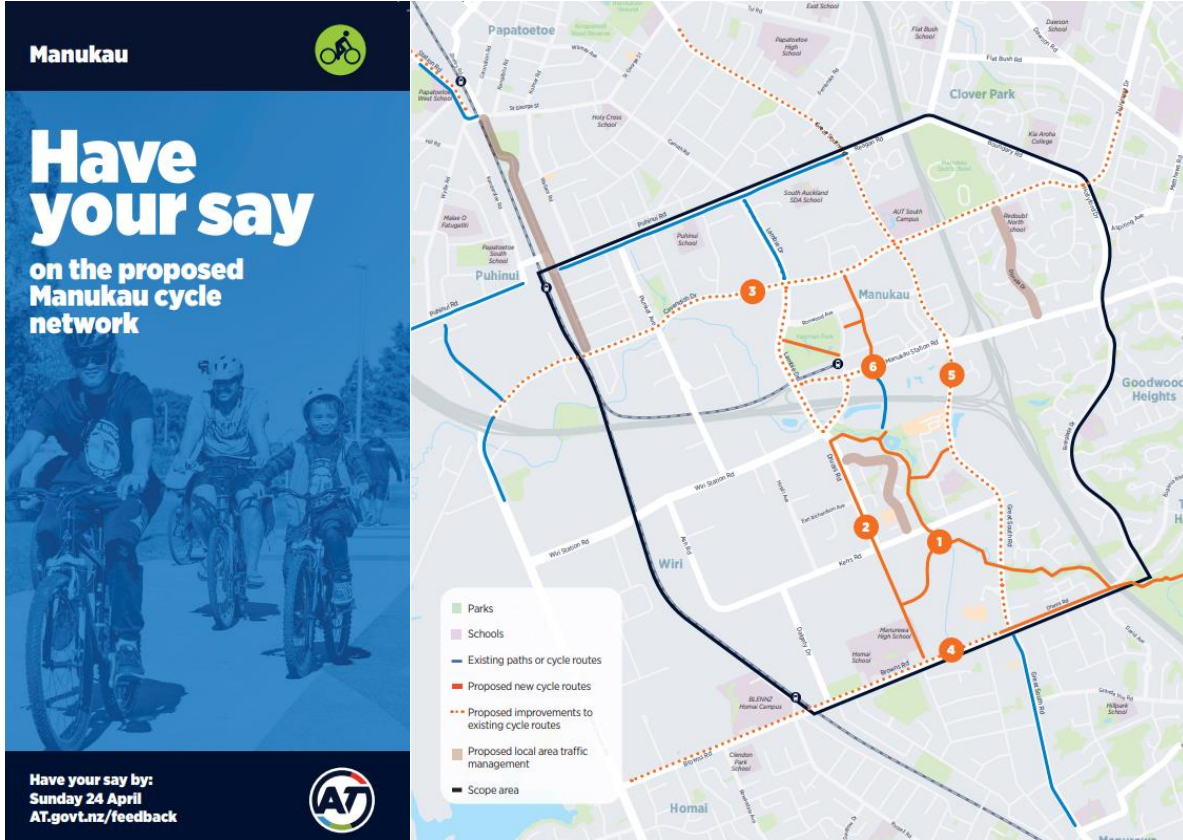
- Planned with the CPWG
- Centred around existing events
- Working with local cycling organisations
- Engaging, relatable and tailored



Public engagement



Public engagement



Manukau

Have your say
on the proposed Manukau cycle network

Have your say by:
Sunday 24 April
AT.govt.nz/feedback

AT

Legend:

- Parks
- Schools
- Existing paths or cycle routes
- Proposed new cycle routes
- Proposed improvements to existing cycle routes
- Proposed local area traffic management
- Scope area

Ötara Bike Burb
April 20, 2022 · 🌐

Morena Te iwi 🇳🇿

★ Auckland Transport are developing a cycling network for both Māngere East and Manukau and are looking for your thoughts and feedback. This is your chance to spend 5 minutes to influence the networks and help lock in the future funding for Māngere East and Manukau.

★ The projects are investigating opportunities to increase the number of people cycling by developing a Cycling Network for each area, to be delivered over eight years, from 2024 to 2031. Over ... [See more](#)



Manukau Manukau Manukau Manukau Manukau Manukau Manukau

Have your say
on the proposed Manukau cycle network

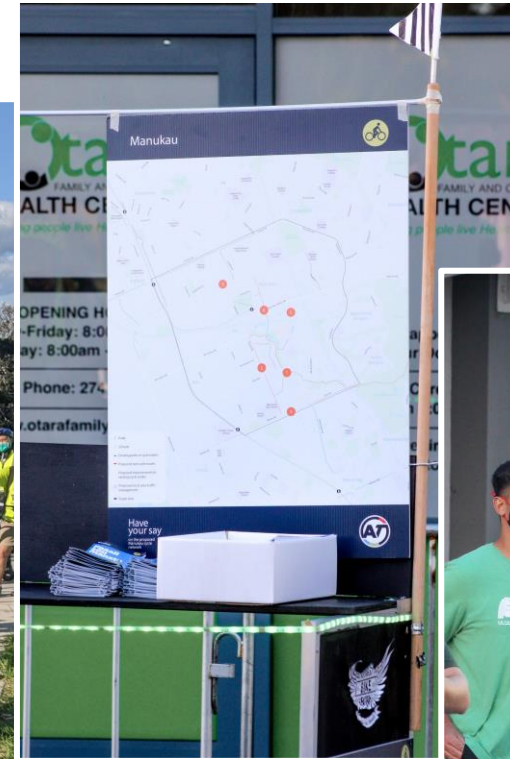
Fai sou manatu
o aualatele mo uia
villivae ua fautuaina

Have your say Sunday 24 April AT.govt.nz/feedback

AT

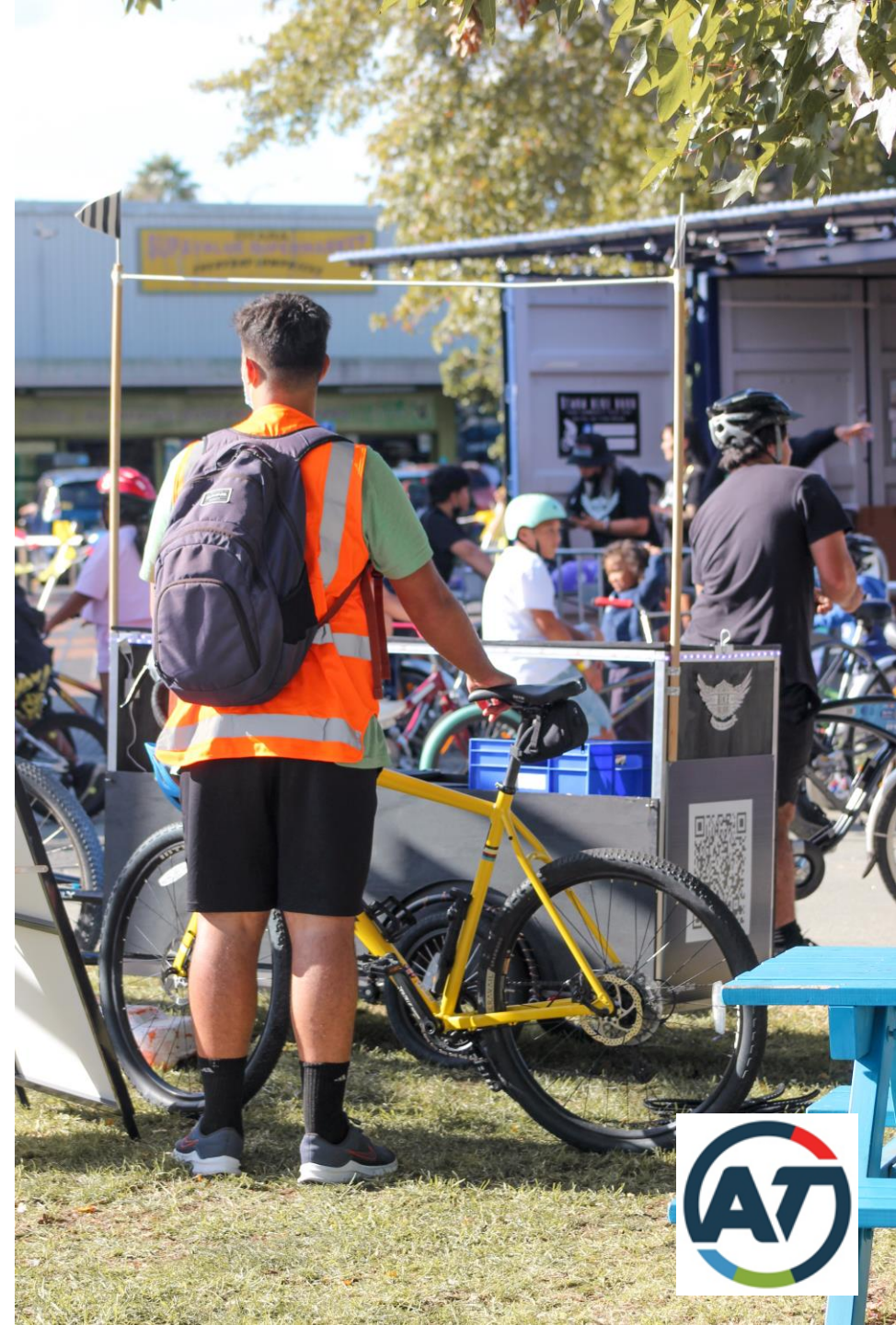


Bike Trailers!



Some things we learned...

- Good things take time (and effort)
- Maintaining interest is difficult
- Right sizing community involvement
- Laying foundations for the future



Outcomes of the process

What happened and where to next

Final proposed cycle networks



Māngere East:

- 9.5km improved routes

Manukau:

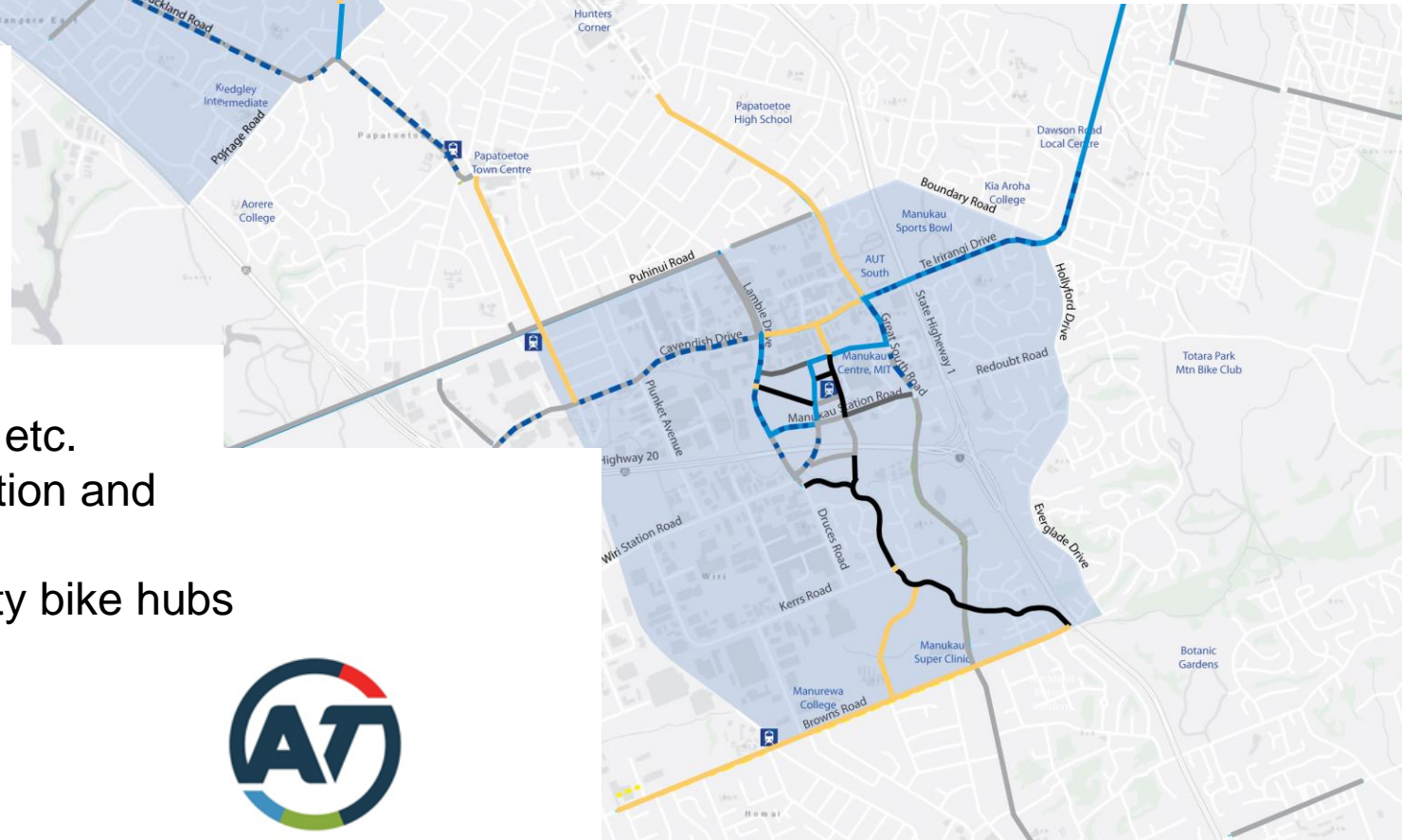
- 8.2km improved routes

Delivering routes to where people want to go first

Early investment focusing on removing the barriers to cycling and getting people interested

Investing in the fundamentals

- Bike parking, wayfinding
- Improving access to bikes, helmets, locks, etc.
- Building bike skills through training, promotion and community events
- Partnering with and empowering community bike hubs



What the networks will deliver

Māngere East

An annual reduction of **220 tonnes** of CO2



A **50% reduction in DSI** per km cycled



Increasing the percentage of people who:

- cycle to work from 0.4% to **4%**
- cycle to education from 0.4% to **6.5%**



28,000 more people living within **500m** of safe cycling infrastructure



Manukau

A reduction of **250 tonnes** of CO2 by 2033

A **60% reduction in DSI** per km cycled

Increasing the percentage of people who:

- cycle to work from 0.4% to **3.5%**
- cycle to education from 0.4% to **6.5%**

22,500 more people living within **500m** of safe cycling infrastructure

Outcomes of the process

Outcomes

- Better insights into the areas, the people who live there and the experiences they have
- Ability to incorporate community priorities into the network development from the outset

Local Boards, Mana Whenua and Stakeholders

- Heavy involvement in the process (not just updated on progress) meant people had confidence in each step as the project progressed – this was invaluable when changes had to be made
- Developed a level of buy-in to the networks and support for their continued development

Decision makers

- The process gave decision makers confidence in the recommendations being made
- Gave the project the ability to feedback on the overall strategic cycling network based on the community's involvement



Key takeaways

4 things we've learned

About increasing cycling within cycle-hesitant communities

1. Tailor engagement to suit the community
2. Empower the community
3. Invest in the Fundamentals
4. Play the long game

Ngā mihi.

Thank you.