

30 March 2023

Staring at the problem- what's blocking transformational change?

Louise Baker BSc (Hons), MSc, PMP- Service Lead- Advisory

Louise.Baker@vitruvius.co.nz

<https://www.linkedin.com/in/louise-baker-nz/>

Vitruvius

A system that cannot deliver the well-being of people and nature is in deep trouble. It invites ideas and actions that are transformative.

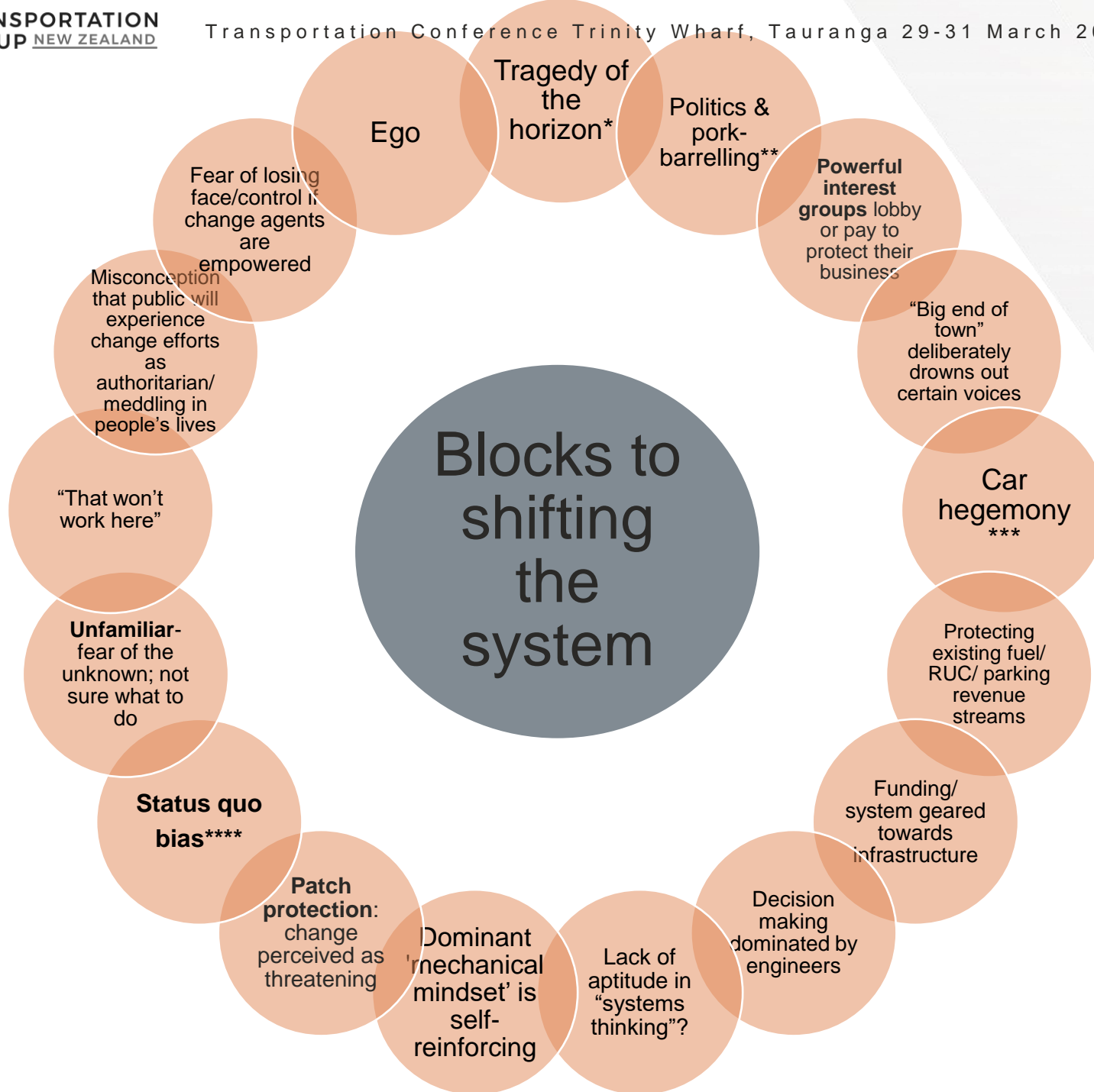
(Gustav Speth, J. 2009)

...as surprising as it may seem, and apparently without knowing it, we are all unwittingly captured in our minds by our surrounding society, family, peers and colleagues.

It is this capture that makes any attempt at transformational change so hard, because, in effect, the advocate inevitably comes across as an insurgent revolutionary, taking on all of society.

(Massy, C. 2017)





* the catastrophic impacts of climate change will be felt beyond the traditional horizons of most actors – imposing a cost on future generations that the current generation has no direct incentive to fix. (Carney 2020)

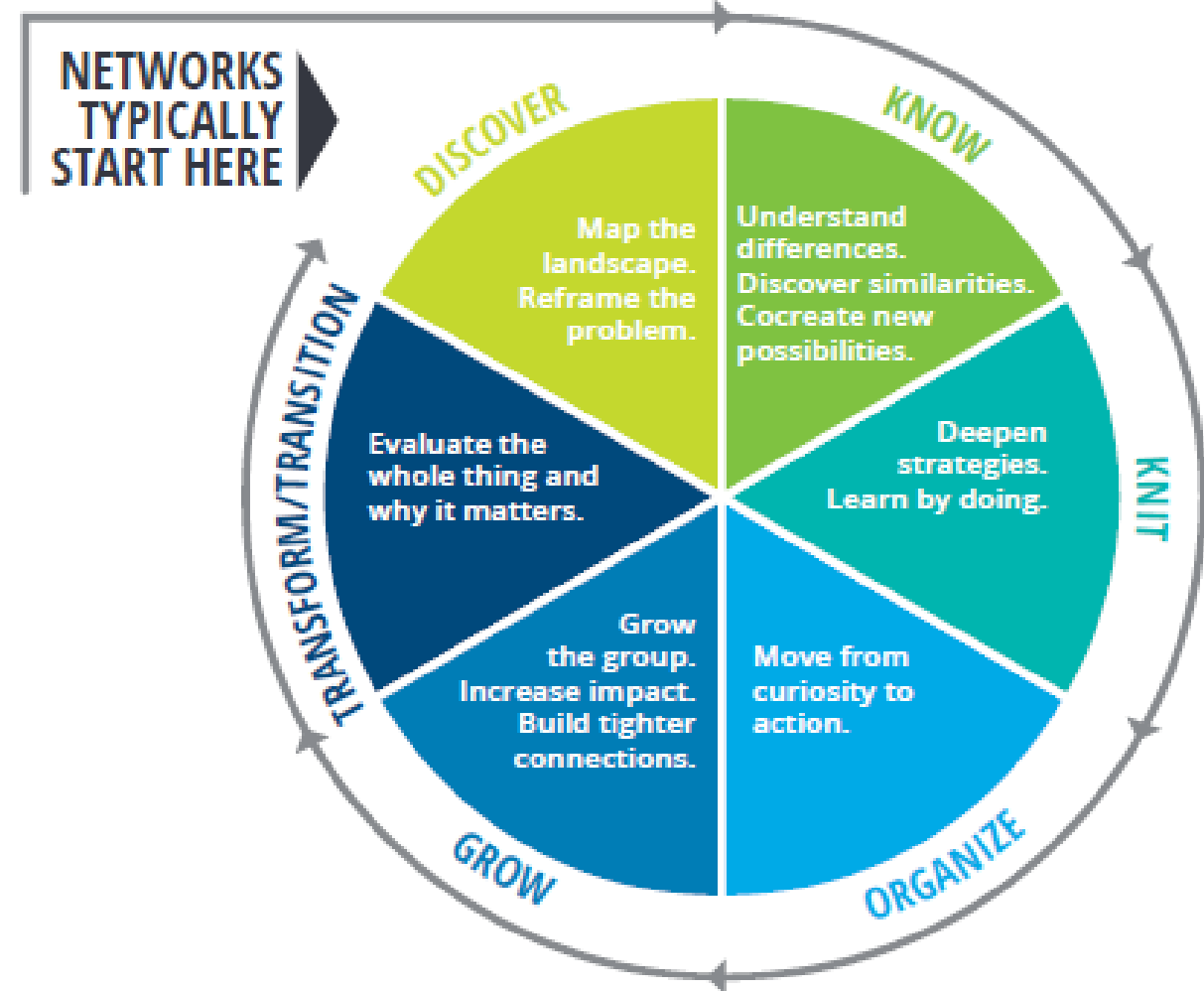
**Pork-barrelling is misusing public money for political gain e.g. the utilisation of government funds for projects designed to please voters or legislators and win votes (Wood et al. 2022)

***leadership or dominance, especially by one state or social group over others.

****Status quo bias is evident when people prefer things to stay the same by doing nothing. It is consistent with loss aversion, and could be psychologically explained by previously made commitments, sunk cost thinking, cognitive dissonance, a need to feel in control, and regret avoidance. (BE n.d. & Desjardins 2021)

Key leverage Points > shifting the system

1. *The mindset or paradigm out of which the system arises: its goals, power structure, rules, culture*
2. *The goals of the system*
3. *The rules of the system (incentives, punishments, constraints)*
4. *The distribution of power over the rules of the system*
5. *Information flows*



Meadows, D. 1999 Leverage Points- Places to intervene in a system
<https://donellameadows.org/archives/leverage-points-places-to-intervene-in-a-system/>

Source: https://www2.deloitte.com/content/dam/insights/us/articles/5139_shifting-a-system/DI_Reimagining-learning.pdf



UFTI Urban Form + Transport Initiative



GREATER TAURANGA TRAVEL PLEDGE Moving together for health, environment, and accessibility



New voices seeking to influence lifestyles that reduce carbon impact

Source: Vitruvius/ ViaStrada (2022) Western Bay TDM Scoping Study

References

Deloitte Insights (2019) *Shifting a system- The Reimagine Learning network and how to tackle persistent problems*. Available at: https://www2.deloitte.com/content/dam/insights/us/articles/5139_shifting-a-system/DI_Reimagining-learning.pdf.

Desjardins, J. (2021) *Every Single Cognitive Bias in One Infographic*. Available at: <https://www.visualcapitalist.com/every-single-cognitive-bias/>.

Draper, S. (2015) *Creating the big shift: system innovation for sustainability*. Forum for the Future. Available at: <https://static1.squarespace.com/static/535849dae4b0f67f52ae0568/t/5e42d1e494c6320f38b439ab/1581437423281/Creating+the+Big+Shift.pdf> (Accessed: 1 March 2023).

Carney, Mark ‘From Climate Crisis to Real Prosperity’ (2020). Available at: <https://www.bbc.co.uk/programmes/m000qkms> (Accessed: 1 March 2023).

Gustave Speth, J. (2009) *The Bridge at the Edge of the World: Capitalism, the Environment, and Crossing from Crisis to Sustainability*. Yale University Press.

Massy, C. (2018) *Call of the Reed Warbler*. Chelsea Green Publishing.

Meadows, D. (1999) *Leverage Points- places to intervene in a system*. Sustainability Institute. Available at: https://donellameadows.org/wp-content/userfiles/Leverage_Points.pdf (Accessed: 1 March 2023).

SI London Hub (2022) ‘Applying Systems Innovation to Decarbonizing the Irish Transport System – Case Study’. Available at: <https://www.youtube.com/watch?v=bCQbODIG-qQ>.

Stanley Robinson, K. (2021) *Ministry for the Future*. Orbit Books.

‘Status quo bias’ (no date). Available at: <https://www.behavioraleconomics.com/resources/mini-encyclopedia-of-be/status-quo-bias/> (Accessed: 1 March 2023).

Vitruvius/ ViaStrada (2022) *Western Bay TDM Scoping Study*

Wallace-Wells, D. (2019) *The Uninhabitable Earth*. Penguin.

Wood, D., Griffiths, K. and Stobart, A. (2022) *Crack down on pork-barrelling to restore trust in politics: new Grattan Institute report*. Grattan Institute. Available at: <https://grattan.edu.au/crack-down-on-pork-barrelling-to-restore-trust-in-politics/>.

Louise Baker BSc (Hons), MSc, PMP- Service Lead- Advisory
Louise.Baker@vitruvius.co.nz
<https://www.linkedin.com/in/louise-baker-nz/>

Thank you.

Vitruvius