



# Refugee Cancer Screening Project

Trudy Phelps

Proudly funded by the NSW Government through the  
Refugee Health Flexible Fund 2021-22 to 2022-23

Cancer Institute NSW



# Acknowledgement of Country

I acknowledge the Traditional Custodians of the lands on which we work and live, and recognise their continuing connection to land, water and community.

I pay my respects to Elders past and present.



# Partnerships



Cancer Institute NSW

NSW Refugee Health Service

Settlement Council of Australia

STARTTS

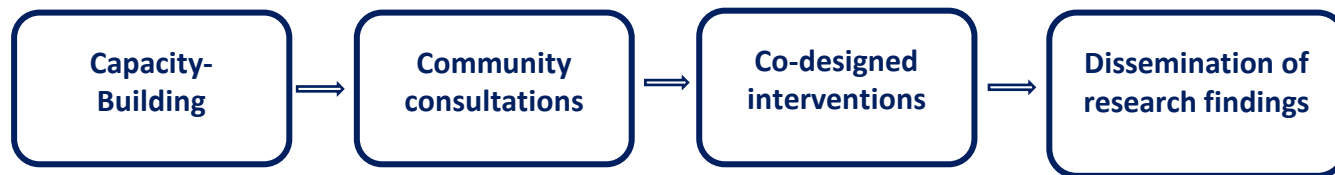
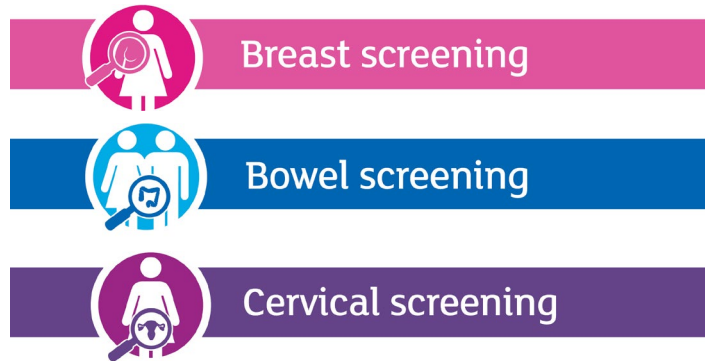
Mosaic Multicultural Connections

Illawarra Multicultural Services

Metro Assist

# About the project

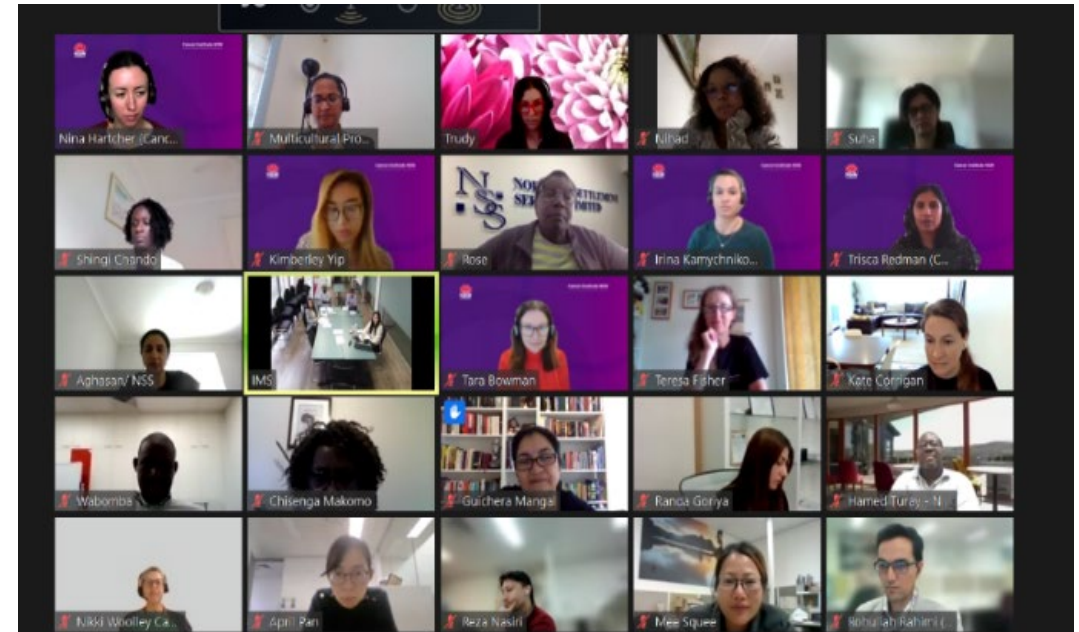
Cancer screening in refugee communities from Sub-Saharan Africa and Middle East



# Capacity building



- Trained 32 settlement and community workers
- 82% no prior cancer screening training





# Consultation findings



**60% of women had not heard of breast screening**

**70% had never done a breast screen**

*“Back home, we never heard of breast cancer screening”*

*“There are a lot of people in the community who do not know [about cancers] and what to do about them.”*

*“In Africa, when you test positive, [for cancer] there is something wrong in you. If the test is positive, it is hard to tell people”*

# Interventions



**“What would help more people in your community do cancer screening?”**

*‘We need community education. More visual workshops’*

*‘Put audio information in our language and we will share it in the WhatsApp group. We don’t need much, just short information.’*

*‘A family event’*

*‘People should be trained in our communities to run workshops’*

*“make screening mandatory”*

*“Screening every one year”*

*“GPs should encourage screening more”*





# Interventions



# Acknowledgements



# Thank you