

BOOK NOW

TO ATTEND THE LAUNCH OF

The Optimal Scenario and Context of Care

ASHM Guidance for Healthcare Providers regarding Infant Feeding Options for People Living with HIV

> Wednesday 8 September 2021
> 18:00 – 19:30 AEST



"ASHM continues to provide exceptional guidance to the healthcare workforce well beyond Australia. This resource will set a new benchmark globally."

Dr Lucy Stackpool-Moore

Director of HIV Programmes and advocacy with the International AIDS Society (GENEVA, SWITZERLAND)



"As an HIV positive mother of three boys I know that the good news is that this guidance and resource will help support women living with HIV in Australia to feel confident to safely breastfeed into the future."

Heather Elis

Communications and Engagement Coordinator with Positive Women Victoria (MELBOURNE, AUSTRALIA)



"As a bioethicist and perinatal healthcare provider, I was most impressed by the humanistic approach of ASHM's updated guidance - this is not about a disease, it's about people. ASHM has championed a collaborative approach to supporting health and wellbeing for individuals with respect and cultural competence."

Dr Marielle Gross MD, MBE

Assistant Professor of Obstetrics, Gynecology, and Reproductive Sciences, Affiliate Assistant Professor Johns Hopkins Berman Institute of Bioethics (PITTSBURGH, USA)



"I wish that I had a tool like this when I was starting my breastfeeding journey. I can only imagine how many lives it will change moving forward."

Jessica Whitbread

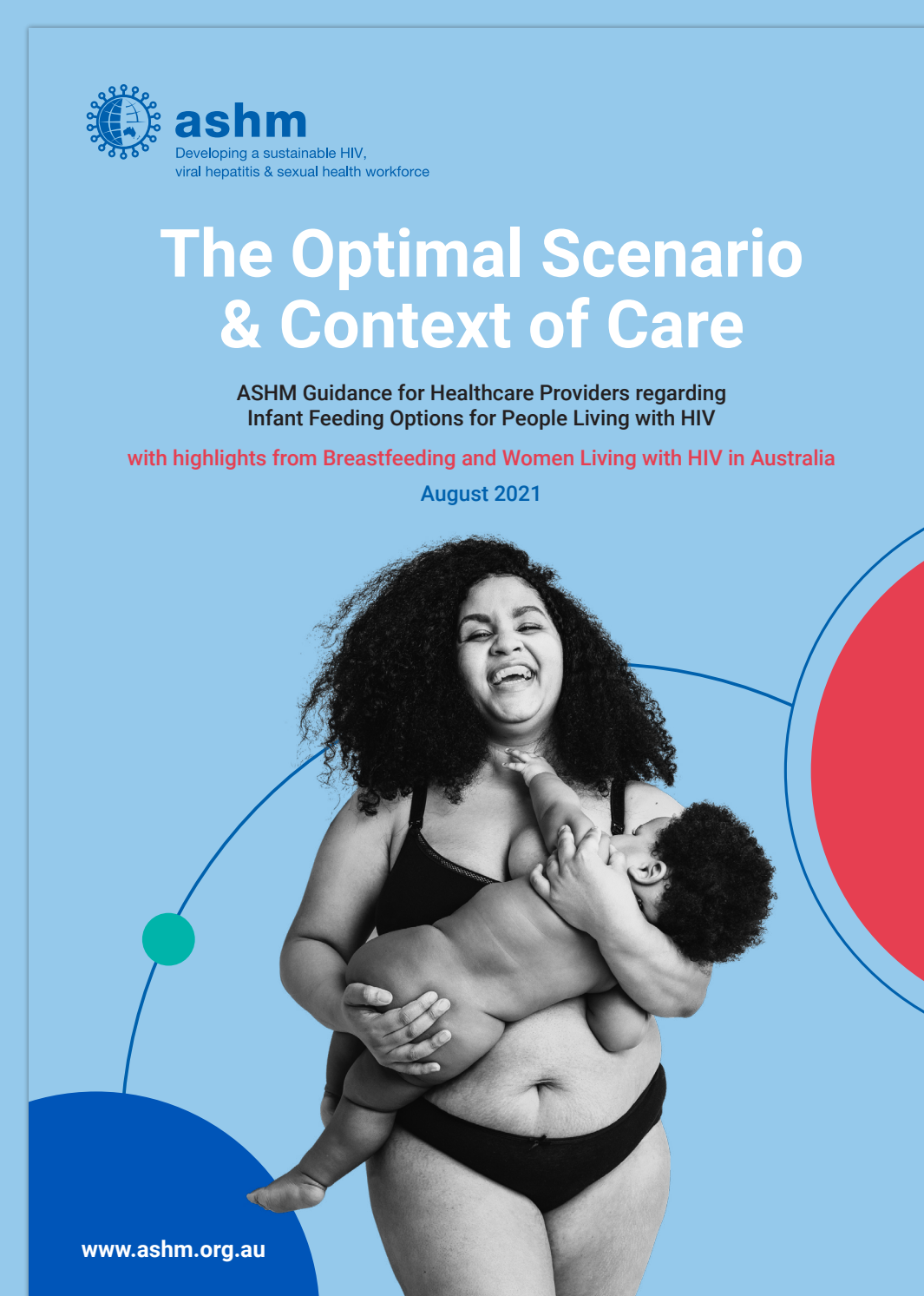
International community organizer, artist, activist, academic (BULGARIA & CANADA)



"As an ID physician who has been looking after pregnant women with HIV for almost 20 years things have changed for clinicians at the coalface providing advice and support to women. Thankfully we have progressed a long way and now it is my routine practice to ask every pregnant woman "have you thought about breastfeeding?"

Dr Michelle Giles

MBBS FRACP PhD
Director, Infections in Pregnancy Service and Deputy Director, Monash HIV Monash Infectious Diseases (MELBOURNE, AUSTRALIA)



BOOK NOW

to receive advance copies of the new ASHM guidance and the NAPWA resource for women living with HIV

