

The impact of the COVID-19 pandemic on people with HIV in Victoria, Australia over two time periods

Weerasuria M^{1,2}, Ko C³, Ehm A⁴, O'Bryan J^{1,2}, McMahon J^{1,2,3}, Woolley I^{1,2,3}, Hoy J^{2,3}, Lau J^{1,2,3}

¹Monash Health Department of Infectious Diseases, ²Alfred Health Department of Infectious Diseases, ³Monash University Department of Medicine, Nursing and Health Sciences, ⁴Living Positive Victoria

✉ mihiri.weerasuria@monashhealth.org

Question: How was the COVID-19 pandemic and lockdowns affecting people with HIV (PWHIV)?

Method: Online survey made with key stakeholder groups conducted in the first and second years of the pandemic

Survey 1: 26th August 2020 - 26th November 2020

Background

<30,000 COVID-19 cases in 1st year of the pandemic
No vaccines
Stringent public health measures and lockdowns

Demographics

153 respondents
77% identified as male and 77% were aged 30 to 60

Survey 2: 30th October 2021 - 31st January 2022

Background

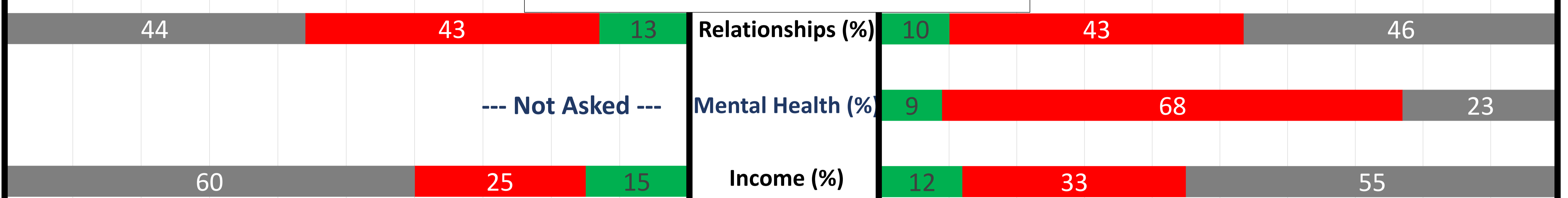
1.8 million COVID-19 cases as of 31st January 2022
Vaccines are readily available
Almost all public health measures relaxed

Demographics

95 respondents
83% identified as male and 75% were aged 30 to 60

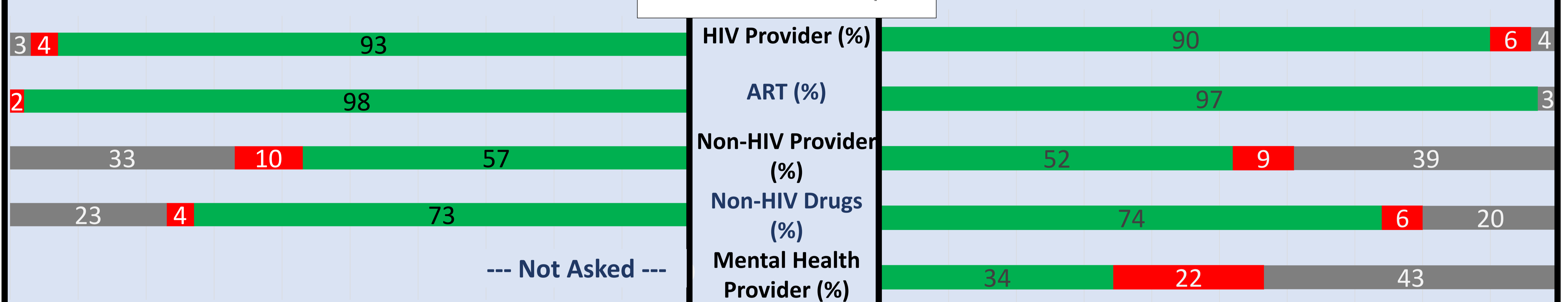
COVID-19 Impacts

Positive Impact Negative Impact No impact

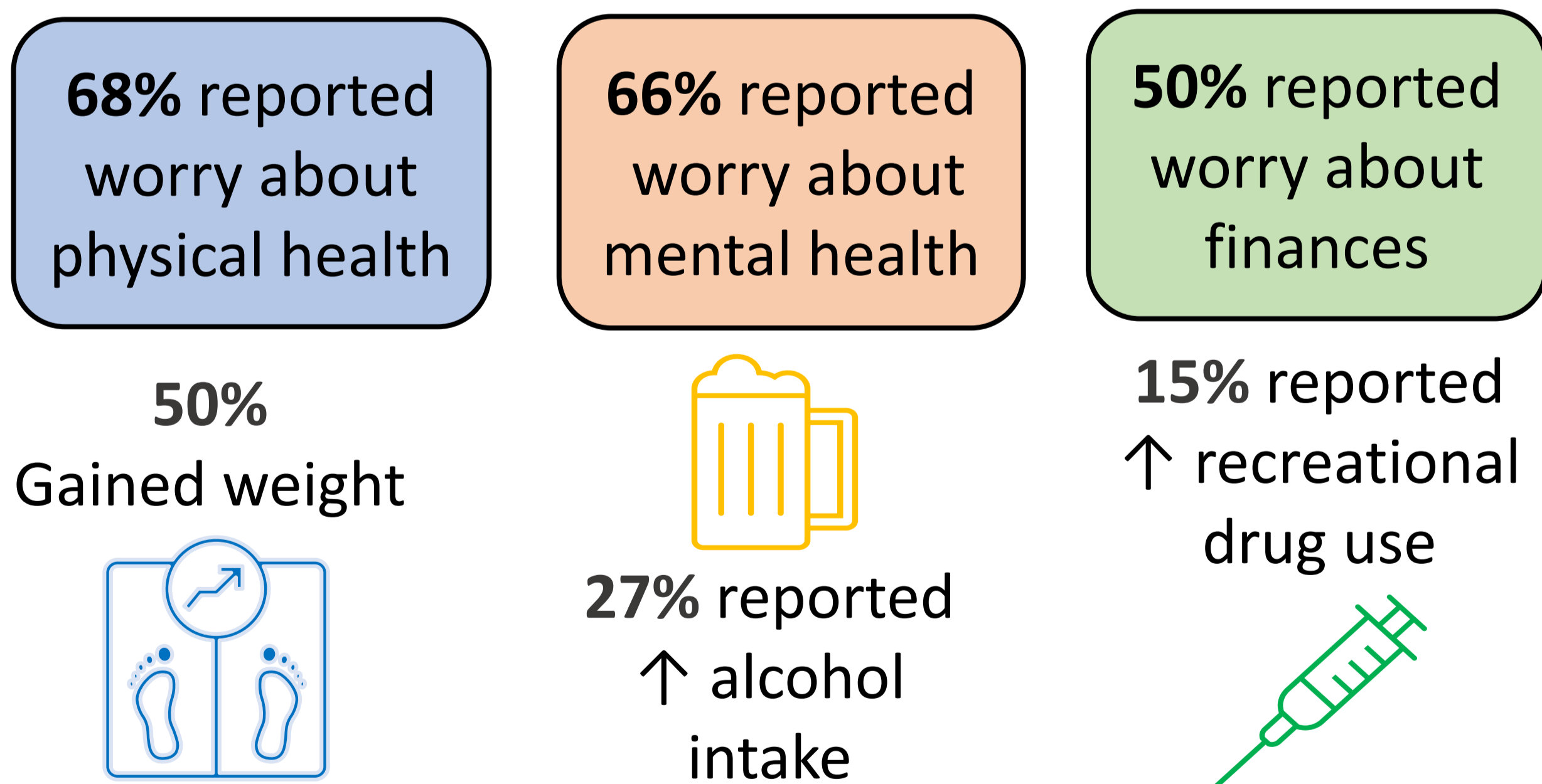


Ability to access care

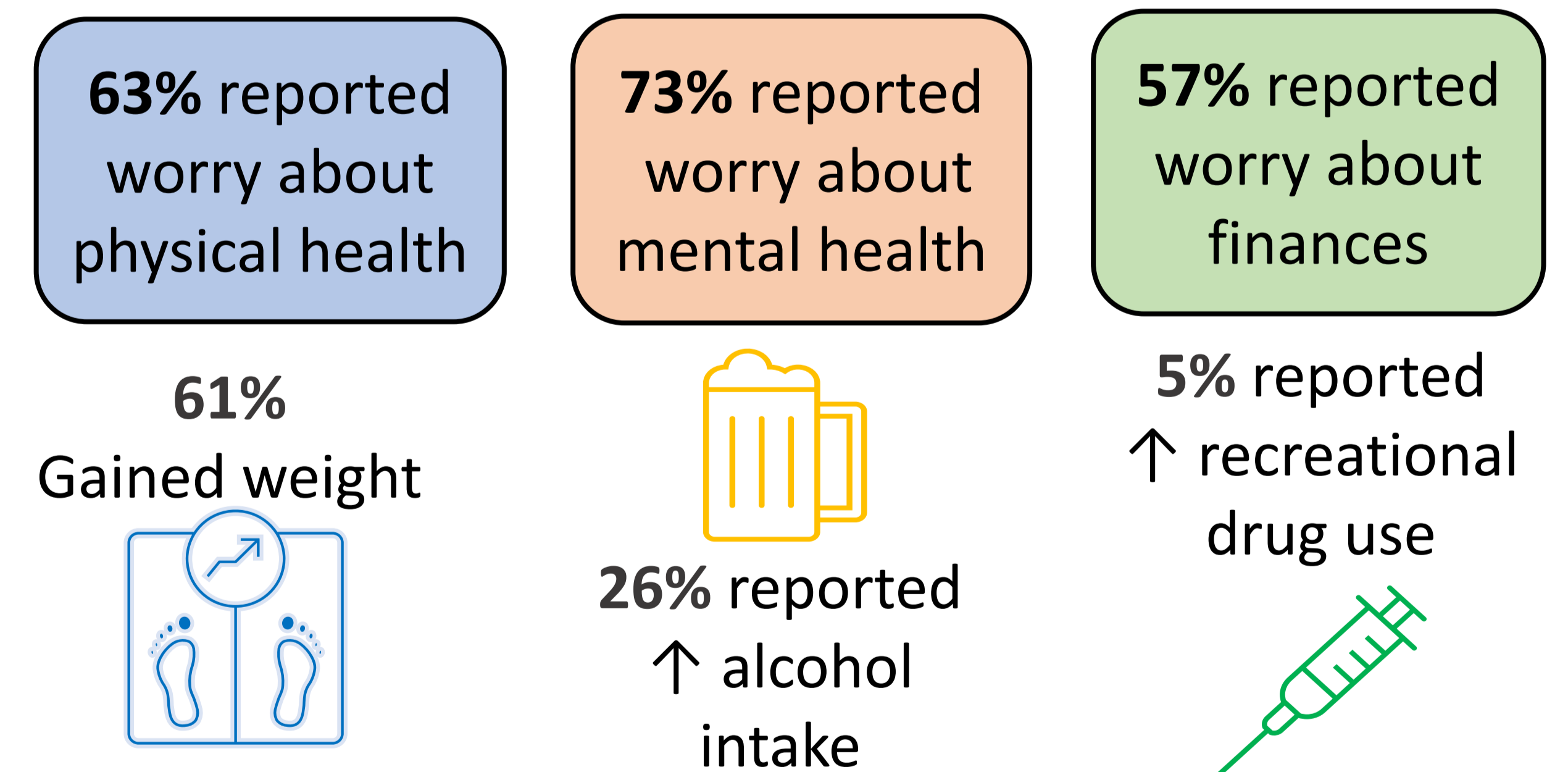
Yes No Not required



COVID-19 related worry and lifestyle change



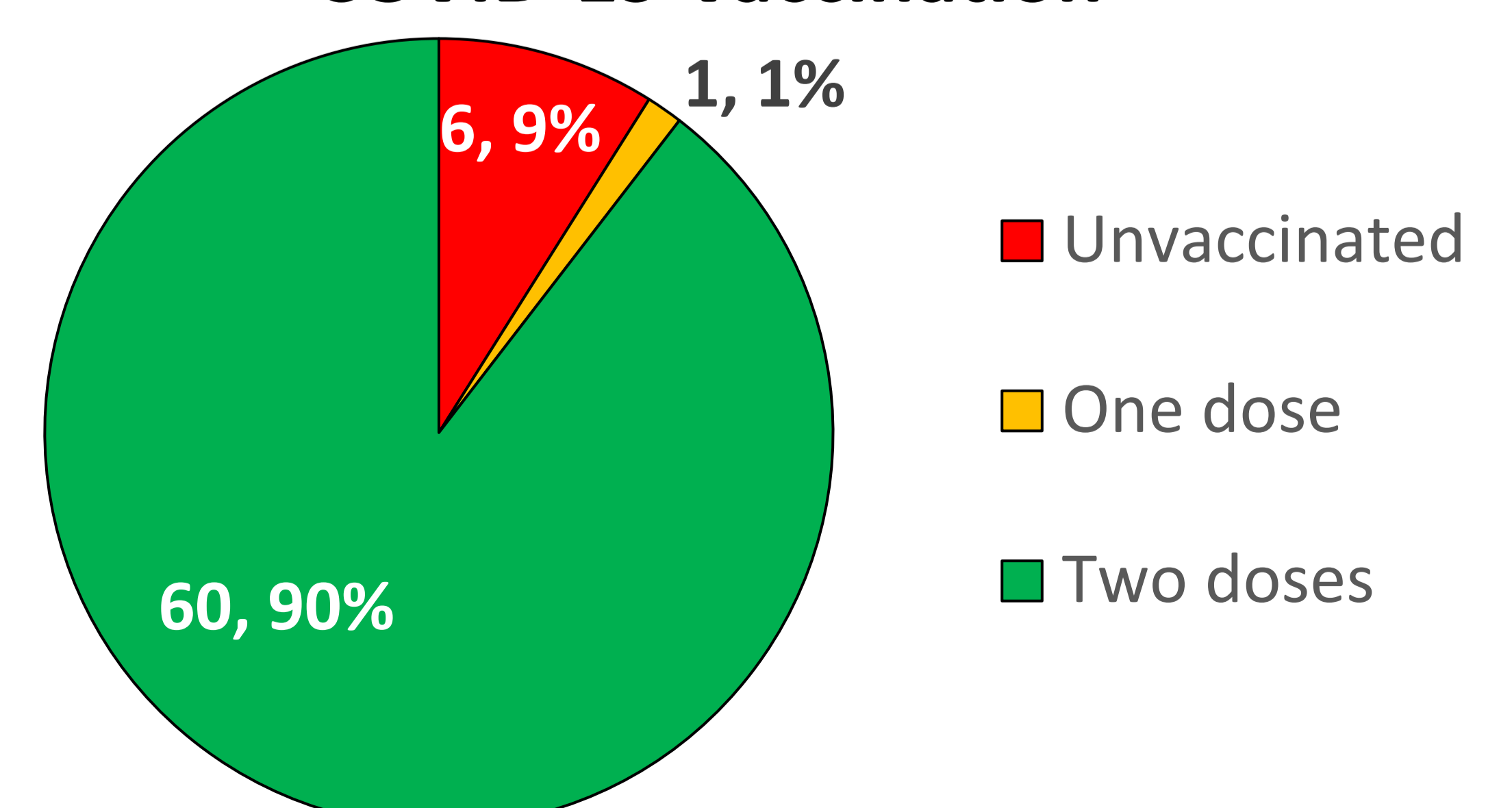
COVID-19 related worry and lifestyle change



Conclusion:

- Provision of HIV care continued during the pandemic
- However, PWHIV continued to experience wide ranging concern and negative impacts
- The difficulty PWHIV have accessing mental health services must be urgently addressed

COVID-19 Vaccination



93% of all Australian adults had received two COVID-19 vaccine doses as of the 31st of January 2022