



WISKA I PTY LTD

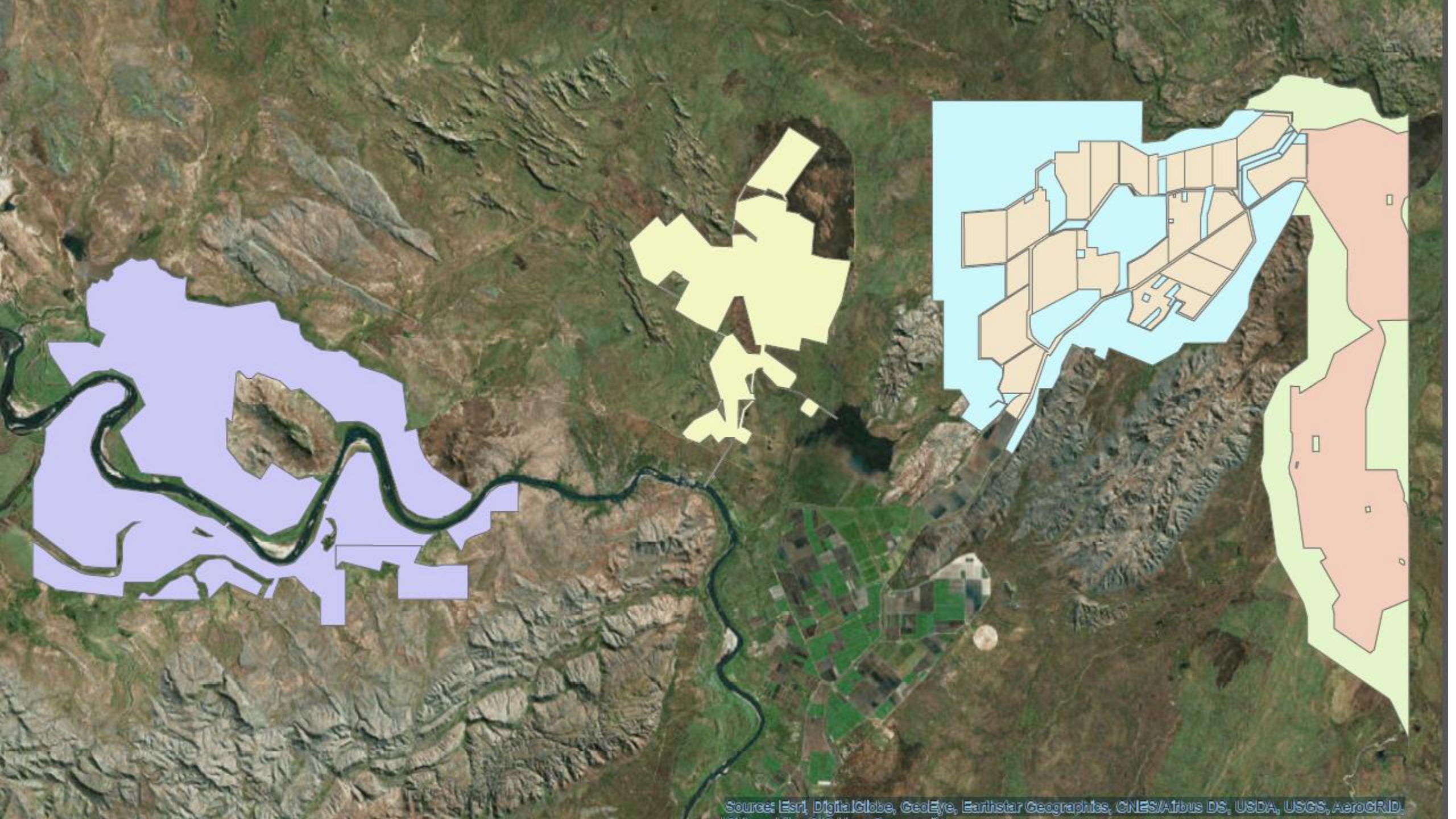
*Goomig farm – Lot 17,18 & 14

WISKAI PTY LTD

CASE III
AGRICULTURE

*Goomig farm – Lot 3&5


KUNUNURRA
COUNTRY CLUB
RESORT





COTTON CROPS



COTTON GIN



GRAIN CROPS



GRAIN GRADING PLANT



SORGHUM



SYRUP PLANT

BALES

SEED & TRASH

COTTON OIL

COTTON EXPORTS

FEED GRADE

FOOD GRADE

FEEDLOTS (BEEF)

SUPERMARKETS

FIBRE WASTE

CO-GEN

NATIONAL GRID

SYRUP

BAIJIU

With **10,000ha** of cotton, **24,000ha** sorghum, **8,000ha** of grains grown on an annual rotational basis and an established cattle feeding operation, KAI's estimated Ord River output would include:

- 20,000 tonnes** (105,000 bales) of cotton
- 28,000 tonnes** of cotton seed and trash
- 600,000 tonnes** sorghum
- 48,000 tonnes** syrup
- 84,000 tonnes** fibre
- 30,000 tonnes** grain
- 70,000 head** of cattle through yard feed operation

Farm gate value to increase from **\$200m** to more than **\$300 million**

Why cotton

- Farming system
- Crop return
- Professional well organised industry
- People
- Capital Expenditure
- Marketing
- Processing
- By-products
- Cattle industry



KAI – DEVELOPMENT/ APPROVAL PROGRESS

Goomig	
Carlton Plain	~3,00ha Seeking Approvals – for Stage 1.
Mantinea	~4,000ha Approvals process has not yet commenced
Knox Plain	Waiting for road re alignment decision
Tarrara	6,000ha for cattle feeding/pressure system fodder production Approvals not yet commenced

CHALLENGES TO DEVELOPING THE NORTH

- **Scale**
- **Competitive Logistics**
- **Government approvals & general support**
- **Investor confidence & enthusiasm**



*Harvesting chia - 2016